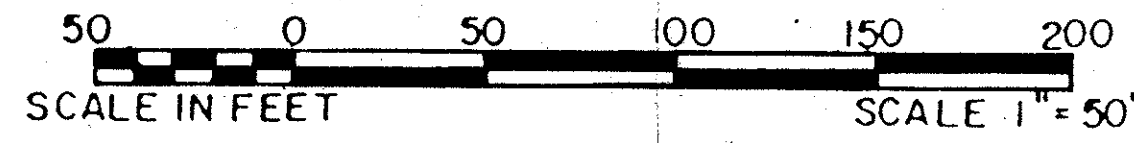


LAKEFIELD OF THE LANDINGS AT WELLINGTON P.U.D. - PLAT 3B

IN PART OF SECTION 7, TOWNSHIP 44 SOUTH, RANGE 41 EAST
 PALM BEACH COUNTY, FLORIDA
 IN FIVE SHEETS SHEET NO. 5

GEE & JENSON
 ENGINEERS - ARCHITECTS - PLANNERS, INC.
 WEST PALM BEACH, FLORIDA
 AUGUST 1988

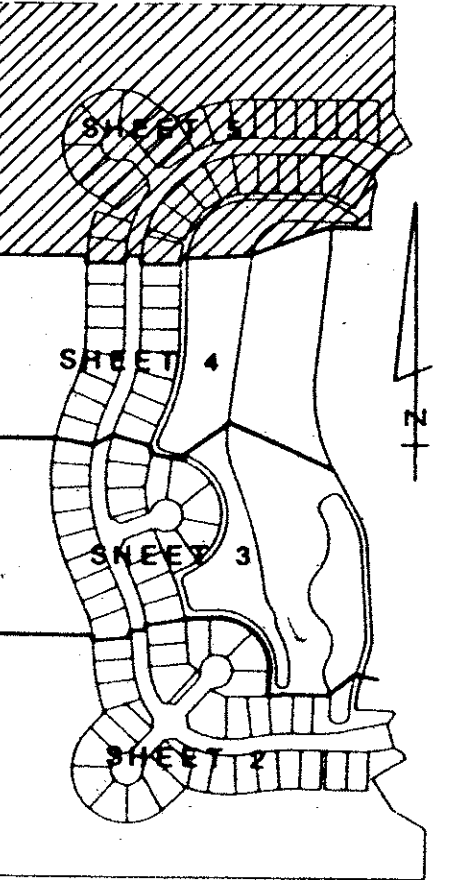


MEADOW WOOD
 P.B. 39, PGS. 38-41

42

STATE OF FLORIDA
 COUNTY OF PALM BEACH
 This plat was filed for
 record at _____ M. this day
 of _____ 1988, and duly
 recorded in Plat Book No. _____
 on Pages _____ thru _____.

JOHN B. DUNKLE
 Clerk Circuit Court
 By: _____ D.C.



KEY MAP

PLAT LIMITS

S00°18'08"W 327.26'

S09°55'37"W 76.05'
 S05°37'09"E 30.00'
 S08°08'27"E 28.34'

PLAT LIMITS

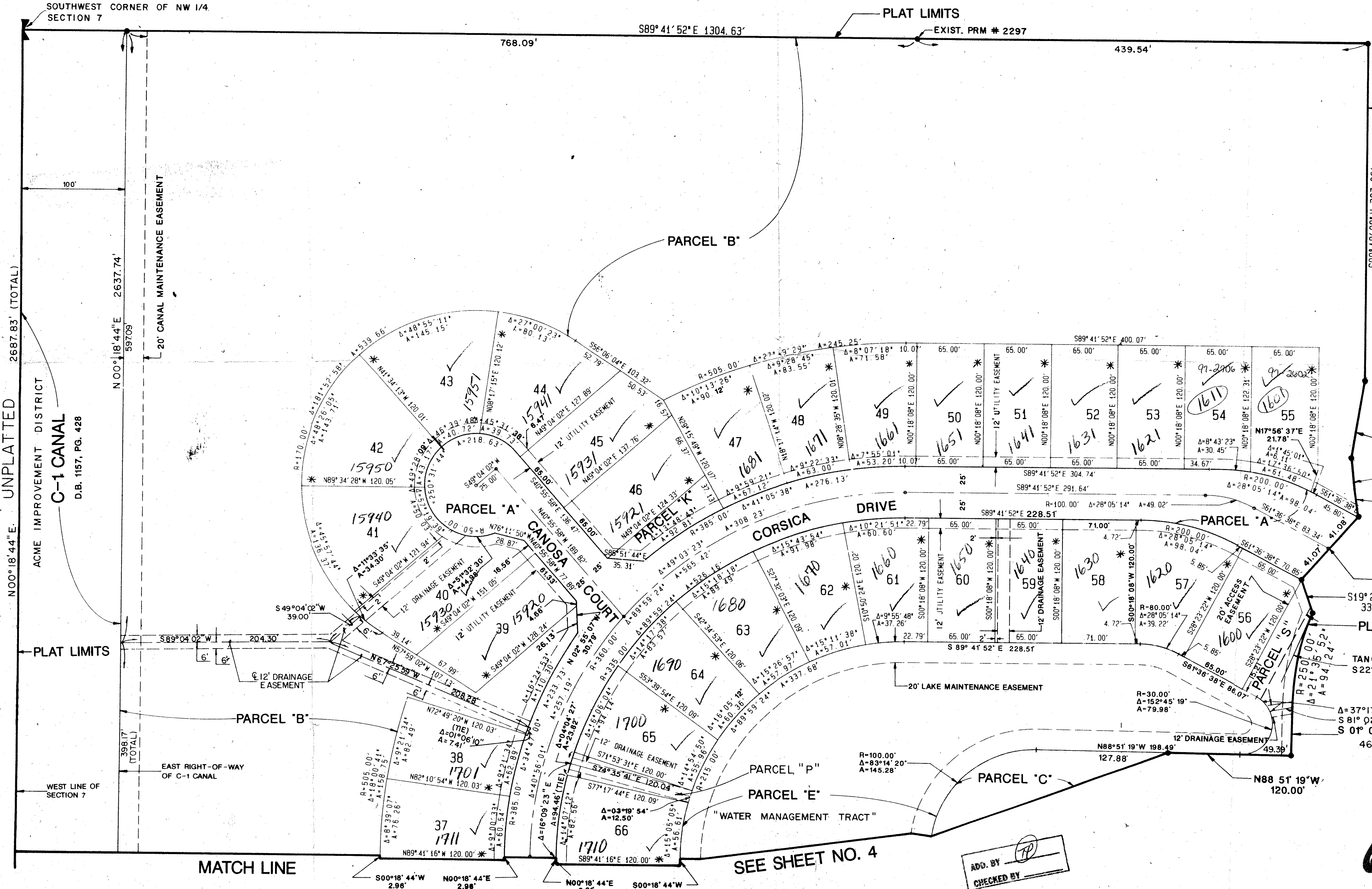
TANGENT
 S22°44'32"W
 46.87'

Δ=37°17'15" A=19.52' (TIE)
 S81°02'37"W 22.66'
 S01°08'41"W

0269-007
 Plat. 78-287
 Alloc. #0001

63/42

* - INDICATES ZERO LOT-LINE



SOUTHWEST CORNER OF NW 1/4 SECTION 7

PLAT LIMITS

EXIST. PRM # 2297

PARCEL 'B'

PARCEL 'A'

DRIVE

PARCEL 'A'

PARCEL 'B'

PARCEL 'P'

PARCEL 'E'

PARCEL 'C'

SEE SHEET NO. 4

MATCH LINE

Lakefield of the Landings
 at Wellington P.U.D. Plat 3B
 SUBDIVISION # at Wellington P.U.D. Plat 3B
 BOOK 63 DATE 4/2
 QUAD 777
 RE 78-287
 TAZ 727
 PUD NAME
 Same

COMPUTED DWL/KAD
 DRAWN DWL/KAD
 CHECKED AWD
 APPROVED [Signature]
 REVISION

NOTE: ALL LINES ARE NON-RADIAL UNLESS OTHERWISE NOTED!

ADD. BY [Signature]
 CHECKED BY [Signature]

LAKEFIELD OF THE LANDINGS AT WELLINGTON PLAT 3B

WATER MANAGEMENT TRACTS ARE THE PERPETUAL MAINTENANCE