

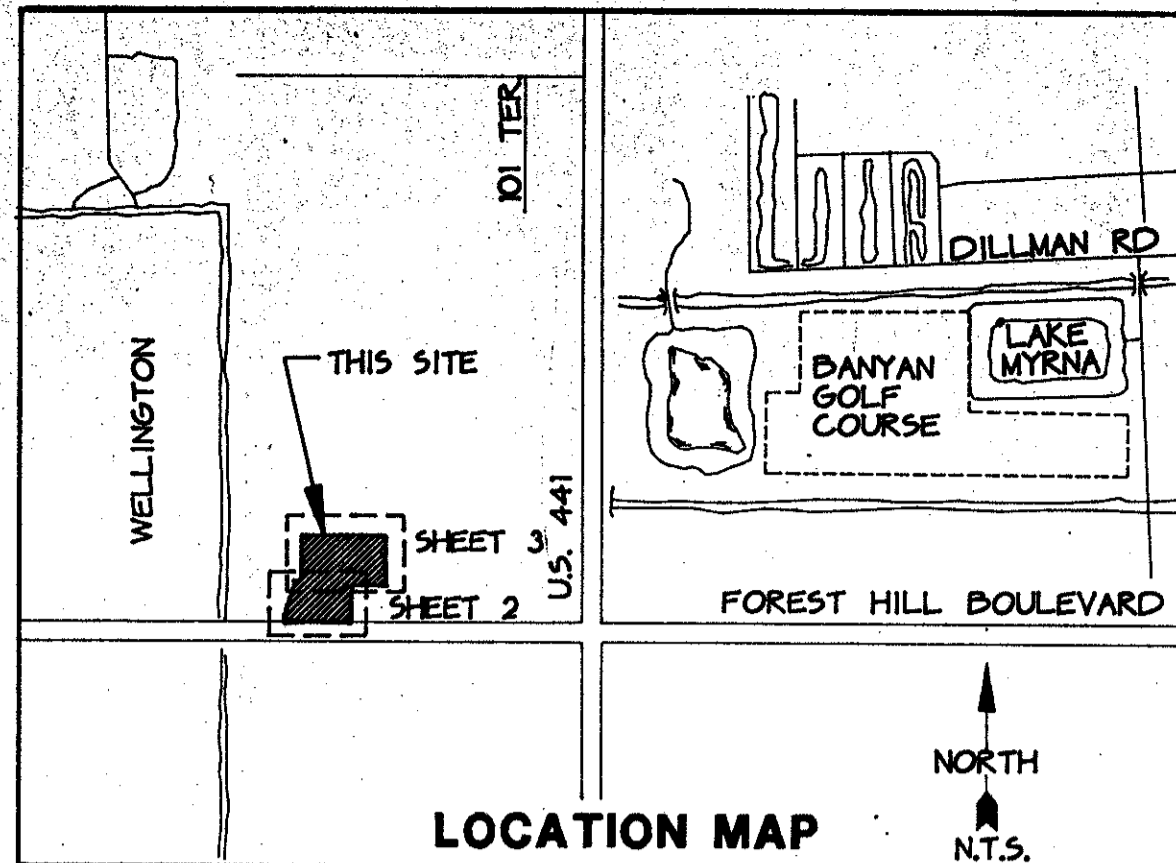
WELLINGTON'S EDGE PLAT NO. 1

50

A PART OF WELLINGTON P.U.D.
A PORTION OF THE SOUTHWEST ONE QUARTER (SW1/4)
OF SECTION 12, TOWNSHIP 44 SOUTH, RANGE 41 EAST
PALM BEACH COUNTY, FLORIDA

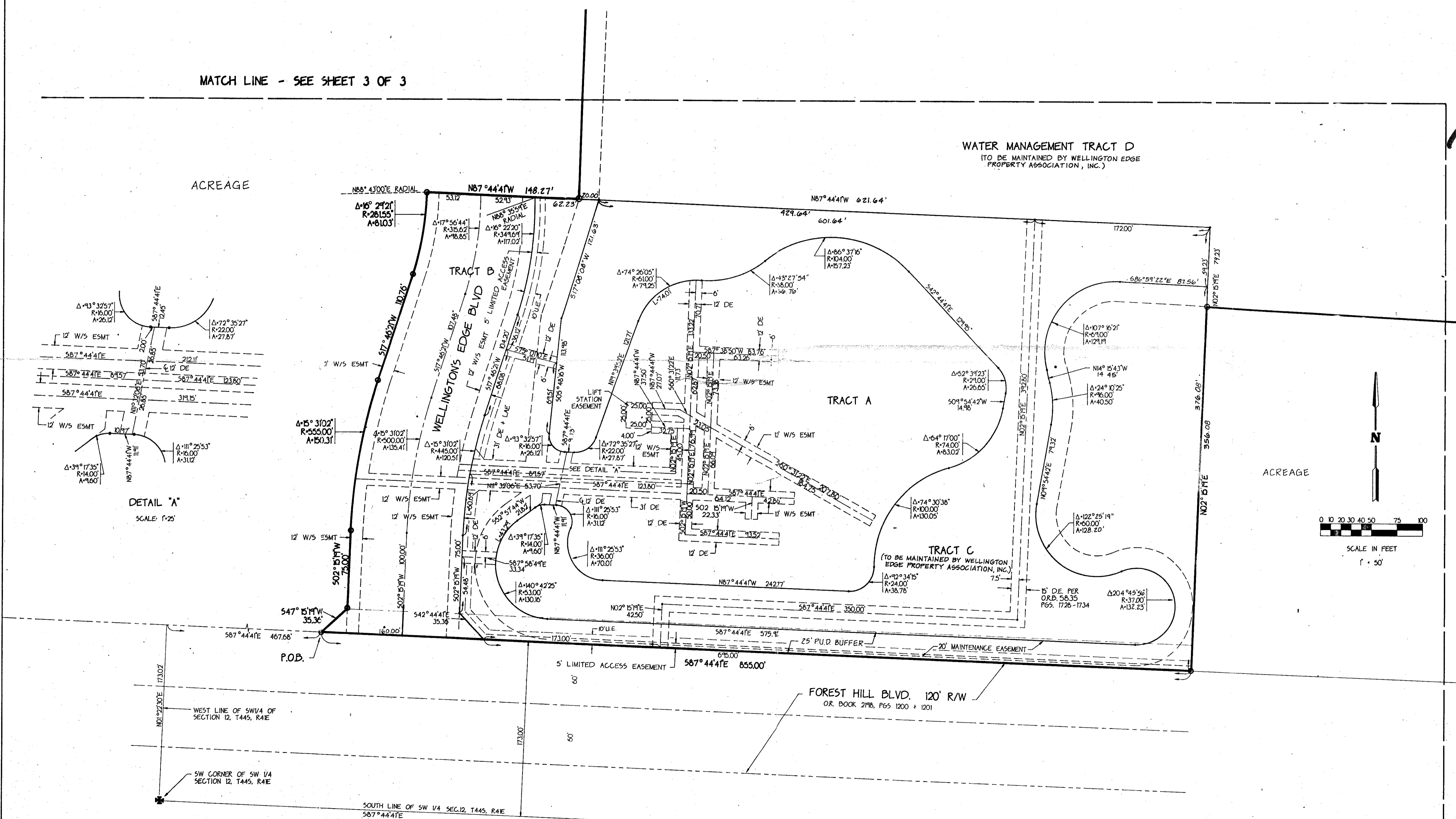
THIS INSTRUMENT PREPARED BY JAMES E. PARK, P.L.S.
WILLIAMS, HATFIELD & STONER, INC. - ENGINEERS PLANNERS SURVEYORS
1325 SOUTH CONGRESS AVENUE, SUITE 118, BOYNTON BEACH, FLORIDA 33426

SHEET 2 OF 3

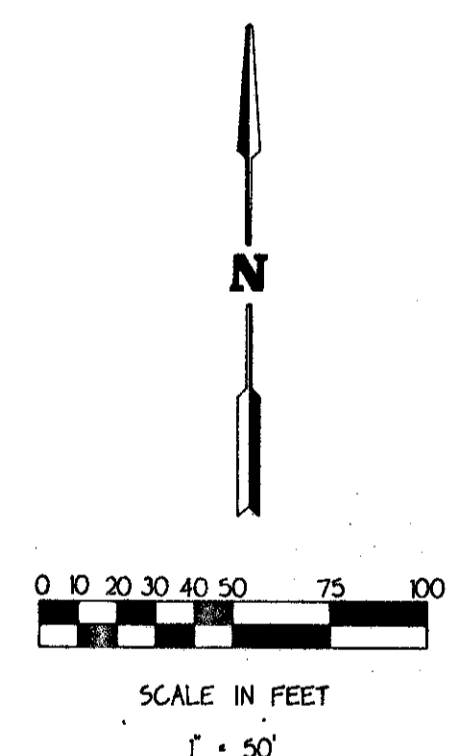


MATCH LINE - SEE SHEET 3 OF 3

*RET. 86-32
5/2/416*



DETAIL "A"
SCALE 1"=25'



MATCH LINE - SEE SHEET 3 OF 3

SUBDIVISION: 0101
BOOK: 63
PAGE: 50
FLOOD MAP: 10016
FLOOD ZONE: D
ZONING: LR 26-32
QUAD: 62
SE: ZIP CODE 33414
PUD PLANS: 742 732

0332-080

0332-080

DUPUCATE 505

WELLINGTON'S EDGE, PLAT No. 1 63/50