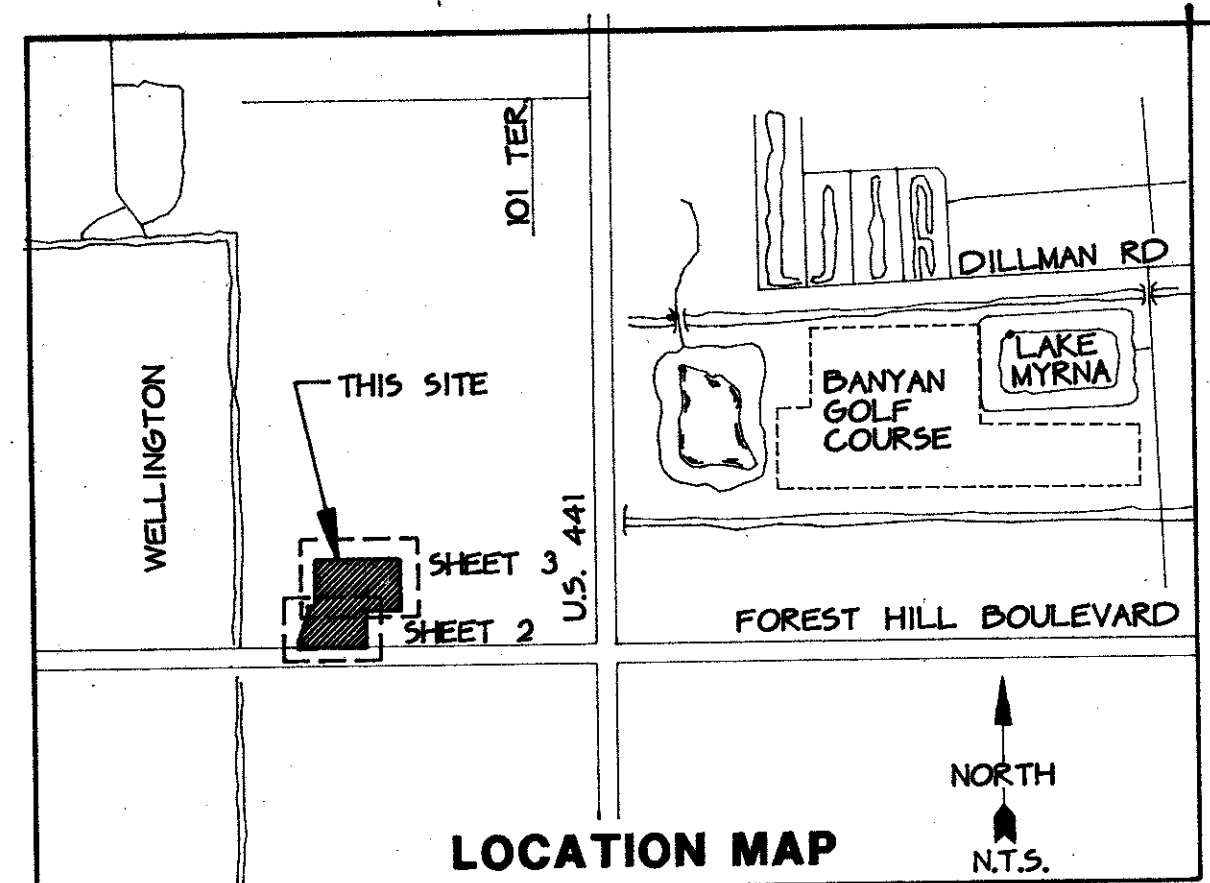


WELLINGTON'S EDGE PLAT NO. 1

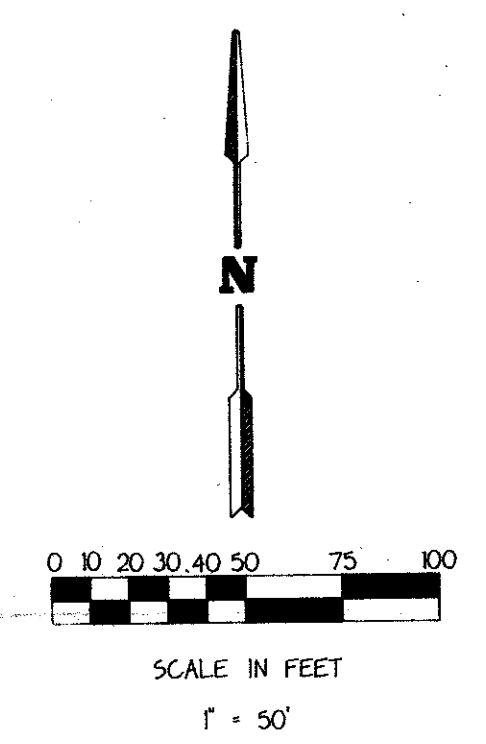
A PART OF WELLINGTON P.U.D.
A PORTION OF THE SOUTHWEST ONE QUARTER (SW1/4)
OF SECTION 12, TOWNSHIP 44 SOUTH, RANGE 41 EAST
PALM BEACH COUNTY, FLORIDA

THIS INSTRUMENT PREPARED BY JAMES E. PARK, P.L.S.
WILLIAMS, HATFIELD & STONER, INC. - ENGINEERS PLANNERS SURVEYORS
1325 SOUTH CONGRESS AVENUE, SUITE 118, BOYNTON BEACH, FLORIDA 33426

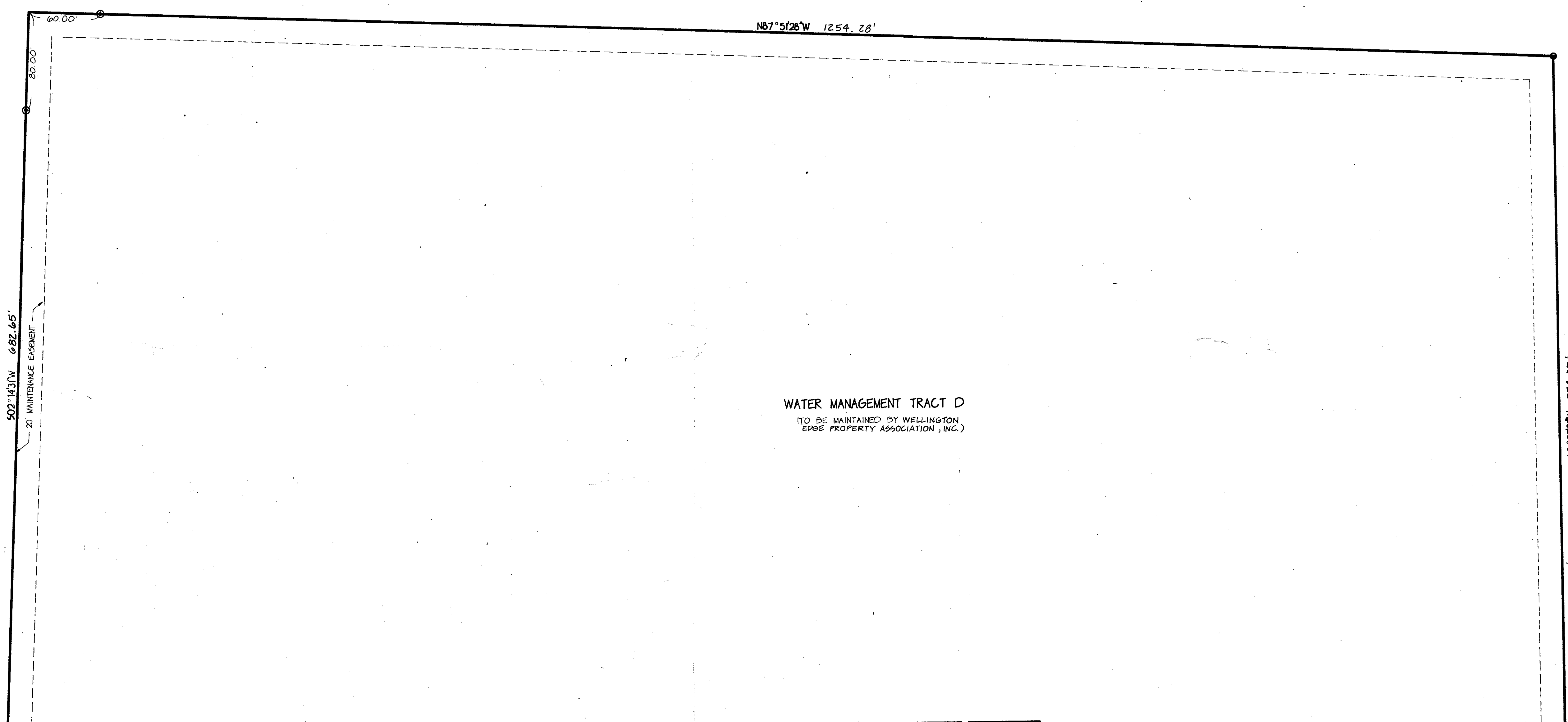
SHEET 3 OF 3



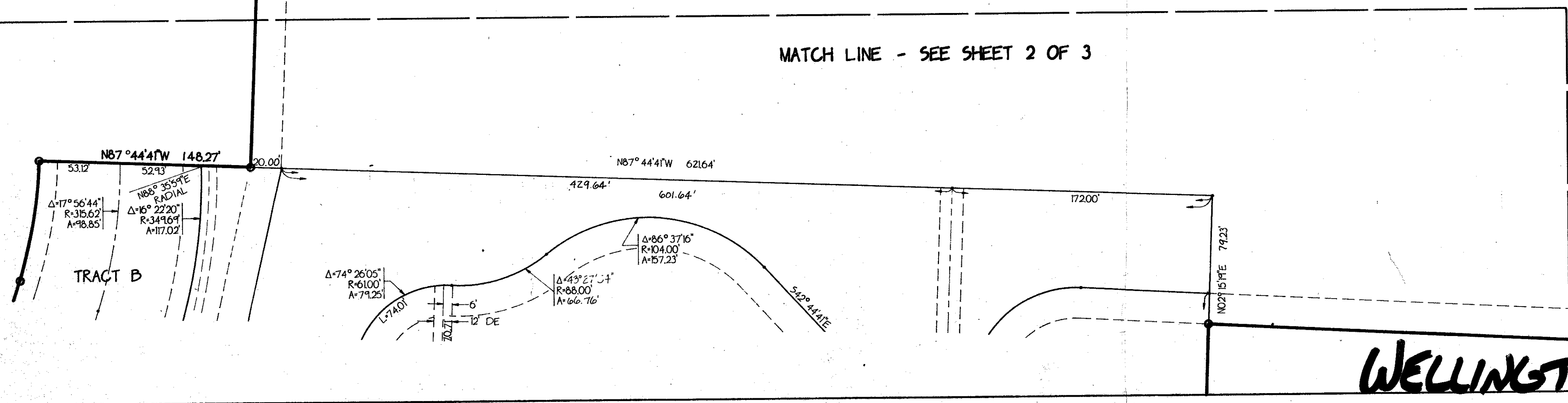
ACREAGE



ACREAGE



MATCH LINE - SEE SHEET 2 OF 3



WELLINGTON'S EDGE, PLAT No. 1 63/51

0332-080

SUBDIVISION - Wellington P.U.D.
BOOK 03 PLAT PAGE 51
FLOOD MAP # 100B
FLOOD ZONE B
ZONING AL 26-32
QUAD # 62
ZIP CODE 33414
SE
FUD NAME T&Z 732