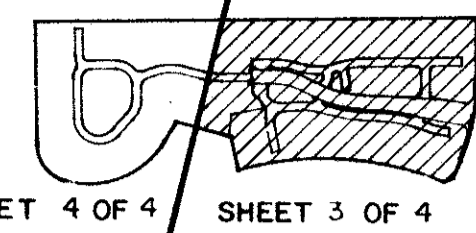


GRAYCLIFFS

A PART OF THE POLO CLUB P.U.D.
 BEING A REPLAT OF A PORTION OF TRACT I, "THE POLO CLUB PLAT II" (P.B. 57 PGS. 46-49), AND
 A REPLAT OF A PORTION OF TRACT LK 12, "THE POLO CLUB OPEN SPACE PLAT FOUR" (P.B. 59 PGS. 8-12),
 SITUATE IN SECTION 34, TOWNSHIP 46 SOUTH, RANGE 42 EAST
 PALM BEACH COUNTY, FLORIDA

MARCH, 1989

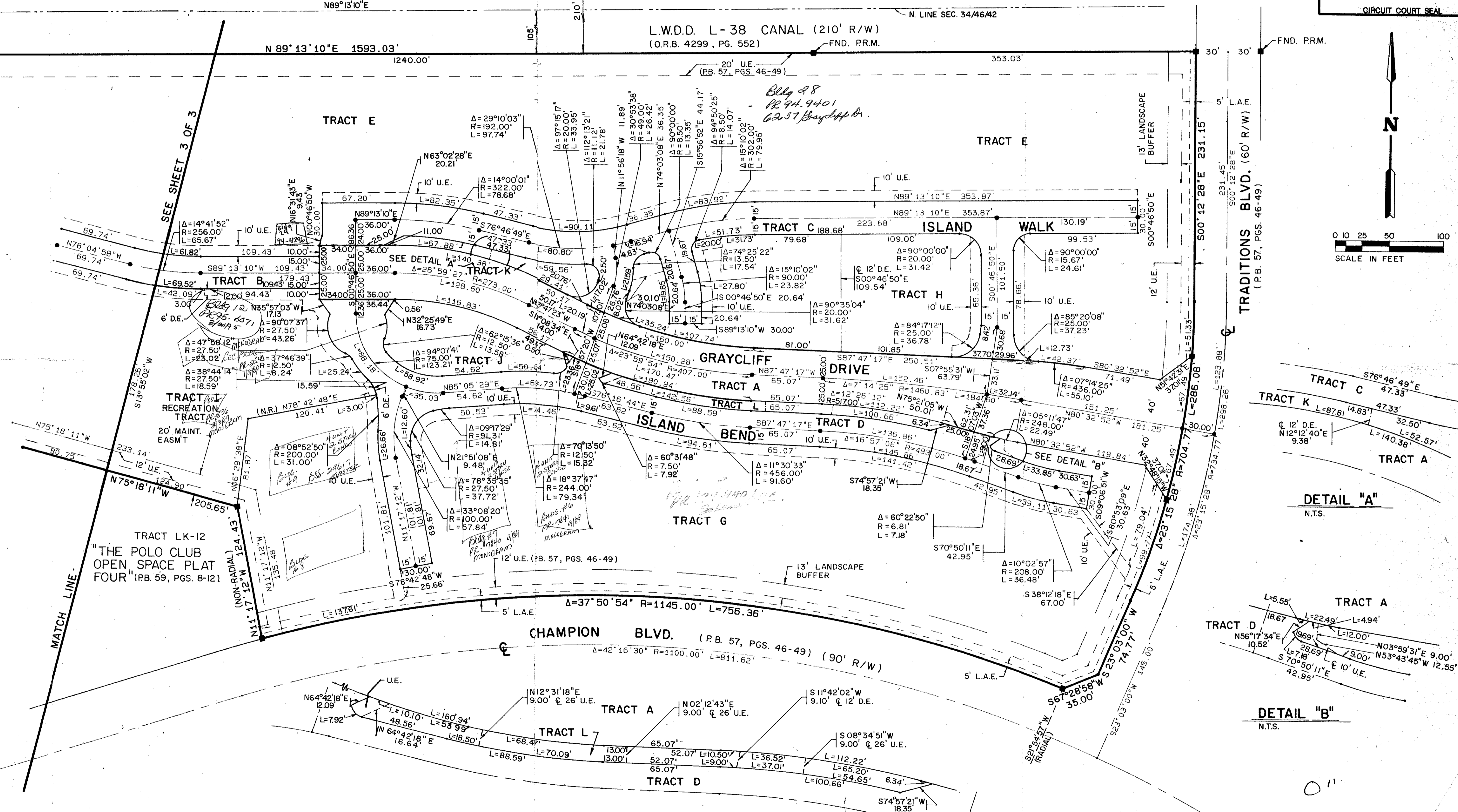
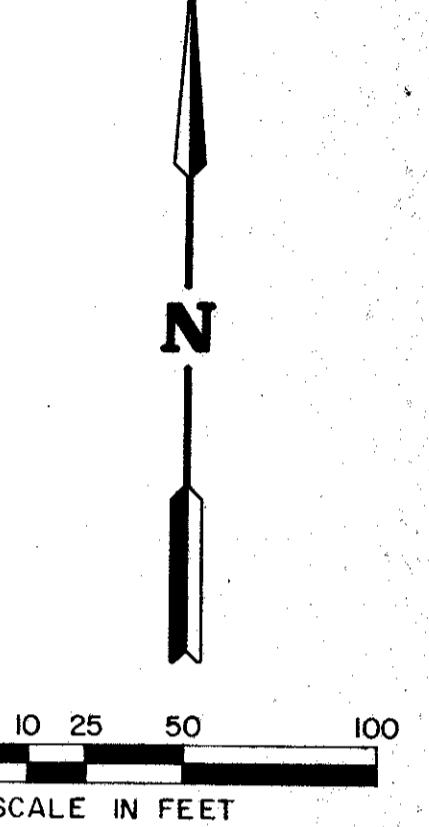
SHEET 3 OF 4



SHEET INDEX MAP
N.T.S.

STATE OF FLORIDA
 COUNTY OF PALM BEACH
 THIS PLAT WAS FILED FOR RECORD _____ DAY OF _____ AD, 1989 AND DULY RECORDED IN PLAT BOOK _____ ON PAGES _____ AND _____
 JOHN B. DUNKLE, CLERK
 BY: _____, D.C.

CIRCUIT COURT SEAL



SUBDIVISION * Graycliff
 PAGE 61
 BOOK 03 FLOOD MAP #2154
 FLOOD ZONE B ZONING RTS-84-71
 QUAD # 37 ZIP CODE 33434
 CE PUD NAME 702402

STANLEY
 2000 LOMBARD STREET, W.
 DRAWN J.C.F. DATE OCT. 1988
 CHECKED R.B.P. SCALE 1" = 50'
 DRAWING NO. 09908PL