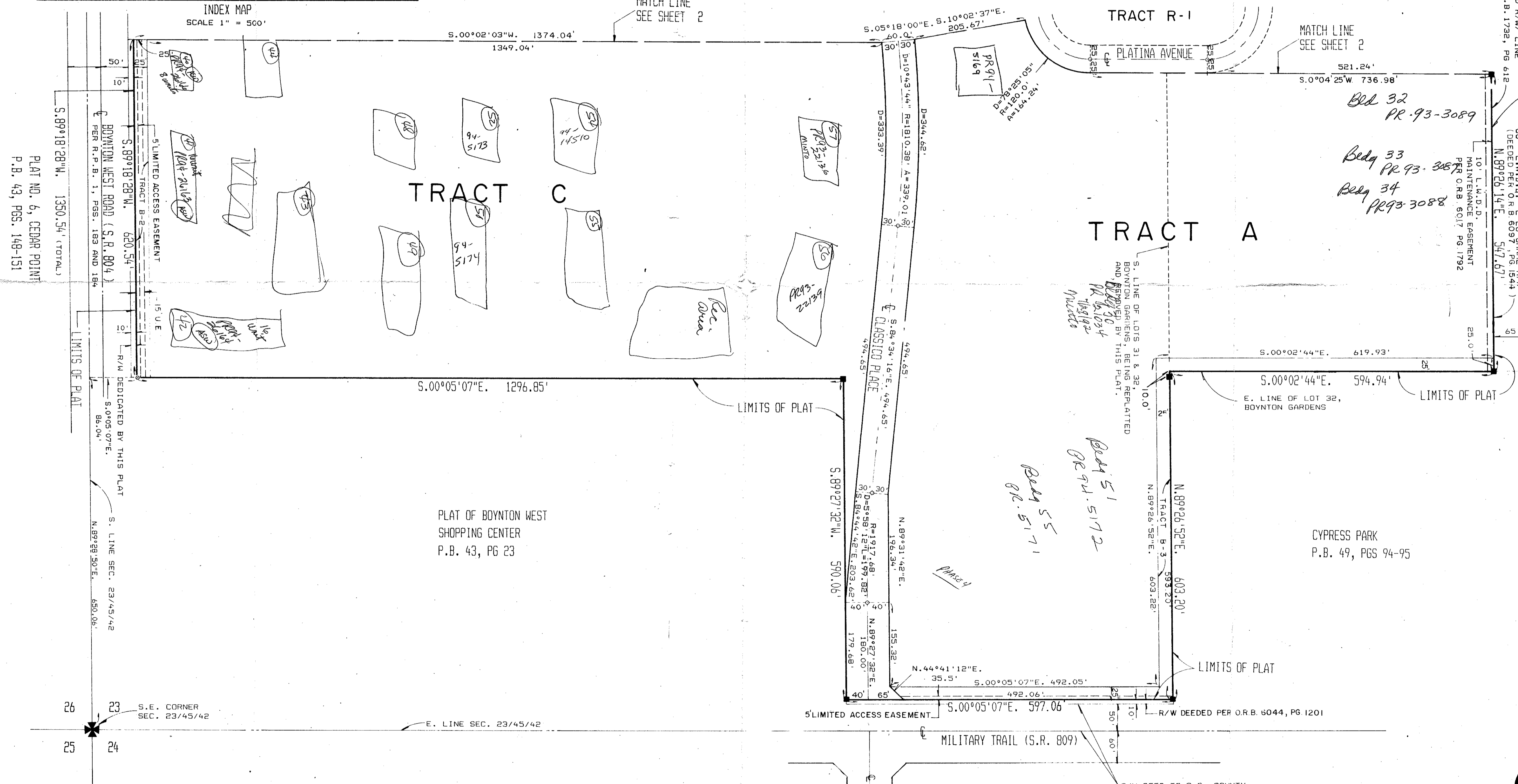
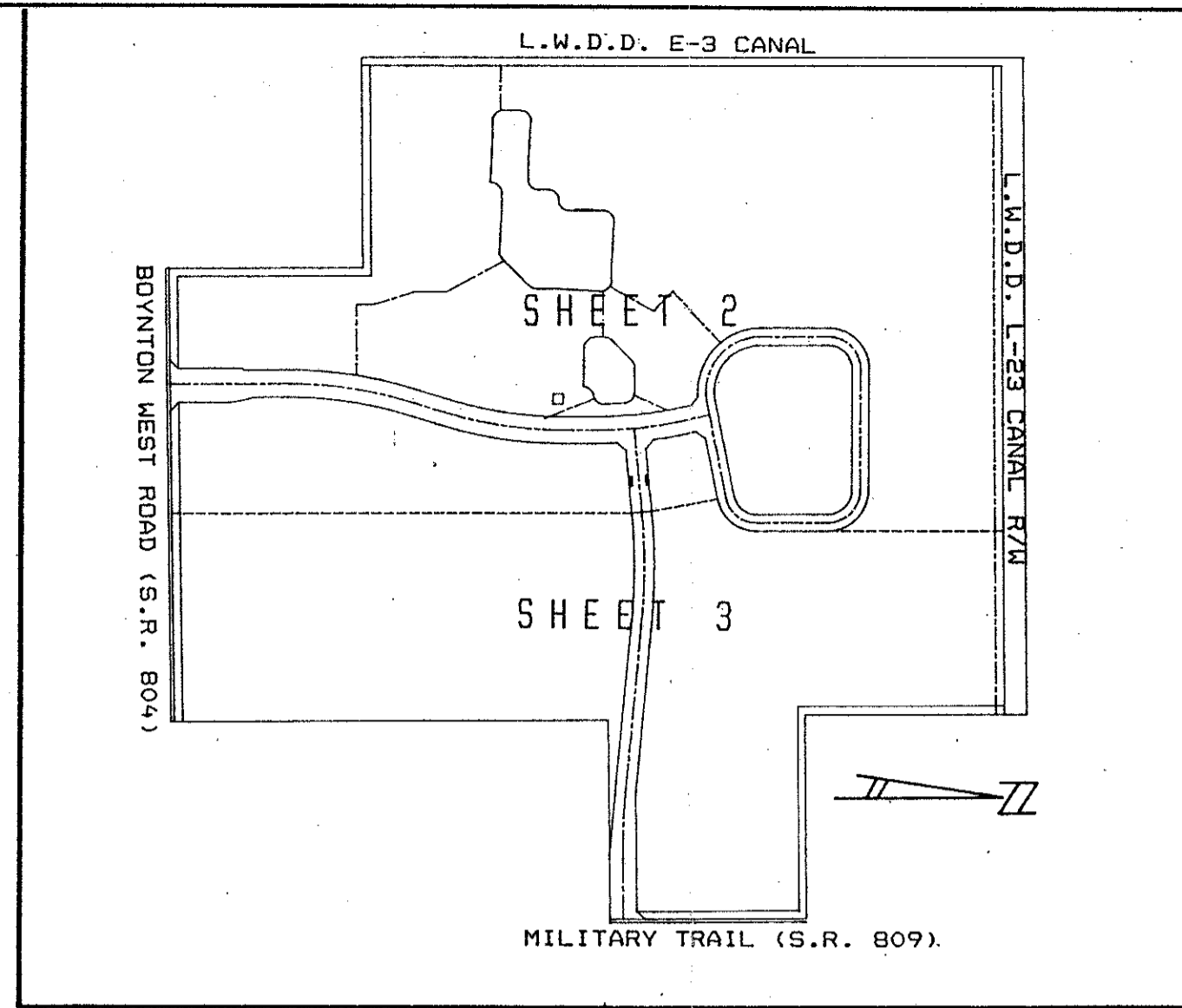
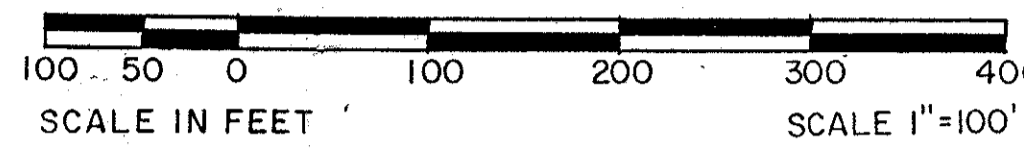


PLATINA PLAT NO. 1 IN COUNTRY CLUB TRAIL - P.U.D

A REPLAT OF LOTS 29-34 OF BOYNTON GARDENS
AS RECORDED IN PLAT BOOK 6, PAGE 32.
PUBLIC RECORDS OF PALM BEACH COUNTY, FLORIDA.
IN PART OF SECTION 23, TOWNSHIP 45 SOUTH, RANGE 42 EAST, PALM BEACH COUNTY, FLORIDA
SHEET 3 OF 4 SHEETS
JANUARY 1989



SUBDIVISION * Platina Plat No. 1
BOOK 63
PAGE 34
FLOOD MAP # 1908
FLOOD ZONE B
QUAD # 35
ZIP CODE 33437
SE
FUD NAME TAZ 445

0226-005

63/84

SCALE: SHOWN	NICK MILLER, INC. Land Surveying	DRAWN BY:
DATE: JAN. 1989	Planning & Development Consultants	CHK
PLATINA PLAT NO. 1 IN COUNTRY CLUB TRAIL - P.U.D.		
2560 RCA Blvd. • Suite 105 Palm Beach Gardens, Florida 33410 (407) 627-5200		DRAWING NUMBER 88025F