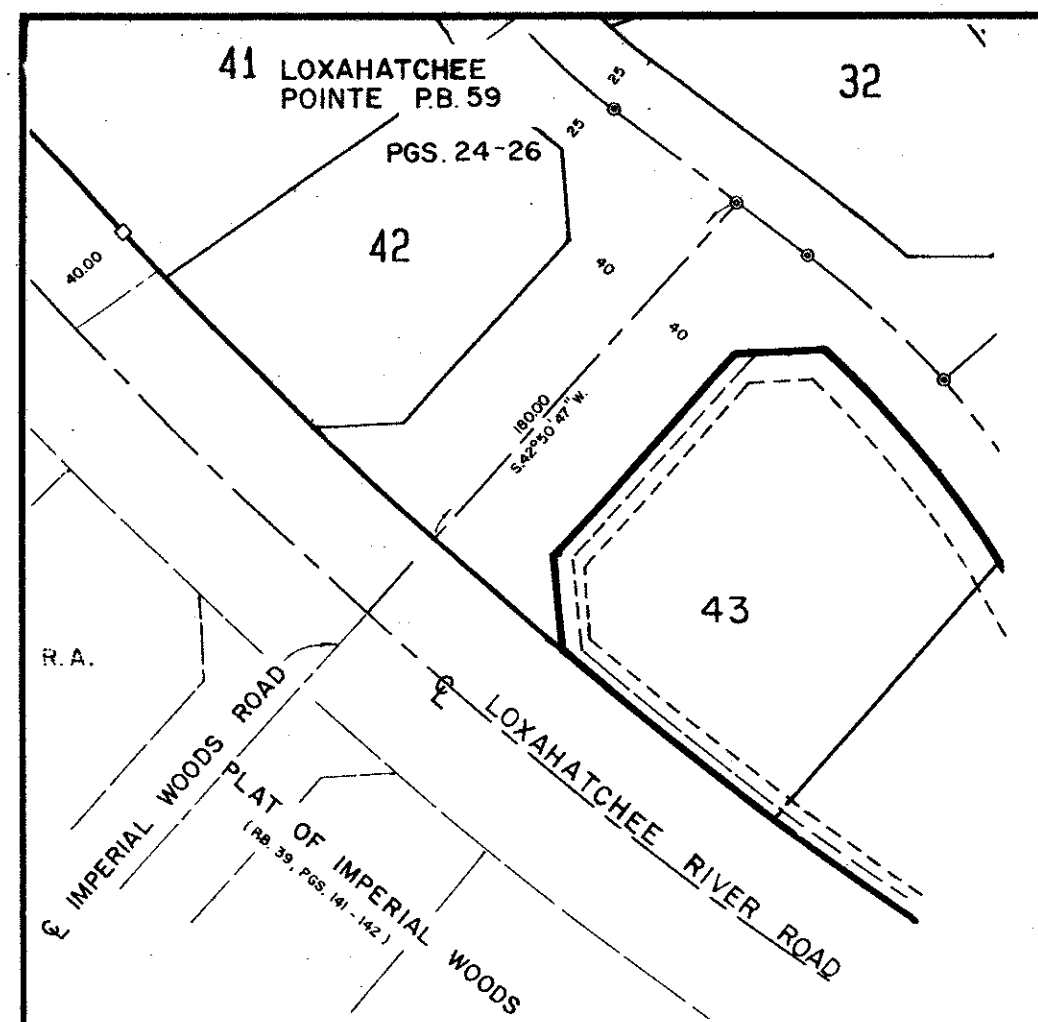


REPLAT OF LOXAHATCHEE POINTE

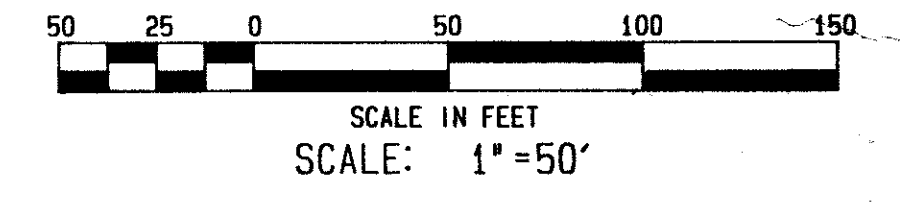
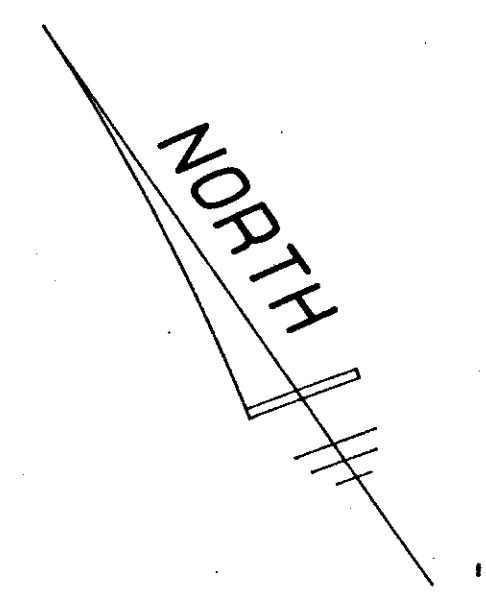
BEING A REPLAT OF A PORTION OF LOXAHATCHEE POINT LYING IN SECTION 27, TOWNSHIP 40 SOUTH, RANGE 42 EAST, PALM BEACH COUNTY, FLORIDA
JUNE, 1988



NORTH FORK LOXAHATCHEE RIVER

P. R. M. FND

DETAIL N.T.S.



NOT PLATTED

TRACT L

TRACT R PB. 59, PGS. 24-26

TRACT "L" LOXAHATCHEE DR. P. B. 59, PGS 24-26

TRACT "L" LOXAHATCHEE RIVER ROAD (80' R/W)

(P.B. 59, PGS. 24-26, P.B. 39, PGS. 141-142 & O.R.B. 5120, PGS. 1275-1292)

LOXAHATCHEE POINTE PB. 59, PGS. 24-26



SEE DETAIL ABOVE

NOTE: "THE EASEMENT FOR RETENTION PURPOSES WHICH UNDERLIES THE PRESENT RECREATIONAL TRACT, AS SHOWN HEREON, WAS ABANDONED BY RESOLUTION OF THE LOXAHATCHEE POINTE HOMEOWNERS ASSOCIATION, INCORPORATED, IT'S SUCCESSORS AND ASSIGNS, DATED APRIL 7, 1989, AND MADE PART OF THE PUBLIC RECORDS OF PALM BEACH COUNTY, FLORIDA."

NOTE: "THE DRAINAGE EASEMENTS AS SHOWN ON THAT PORTION OF THE PLAT OF LOXAHATCHEE POINTE RECORDED FOR RECORD AT PLAT BOOK 59, PAGE 24 WHICH IS THE SUBJECT OF THIS REPLAT ARE HEREBY VACATED AND ARE OF NO FORCE AND EFFECT. THE DRAINAGE EASEMENTS AS SHOWN ON THIS REPLAT PROVIDE THE IDENTICAL DRAINAGE FOR THE PROPERTY WHICH IS THE SUBJECT OF THIS REPLAT AND REPLACES THE PREVIOUSLY REFERENCED DRAINAGE EASEMENTS."

NOT PLATTED

Replat of Loxahatchee Point
SUBDIVISION # PAGE 90
BOOK 63 FLOOD MAP #103B
FLOOD ZONE B ZONING RS
ROAD # 25
ZIP CODE
TOWNSHIP T2S 16
RANGE R3E 42E
SECTION 27

63/90

REPLAT OF LOXAHATCHEE POINTE

JUPITER, FLORIDA		
WALLACE SURVEYING CORPORATION		
9176 ALTERNATE A1A, LYKE PARK, FLORIDA 33403 • 305/942-4233		
FIELD	JOB NO. 87-1354 "C"	F.B. PG.
OFFICE R.J.C. & D.H.	DATE JUNE, 1988	DWG. NO. 87-1354 "C"
C.K.D.	REF.	SHEET 2 OF 2