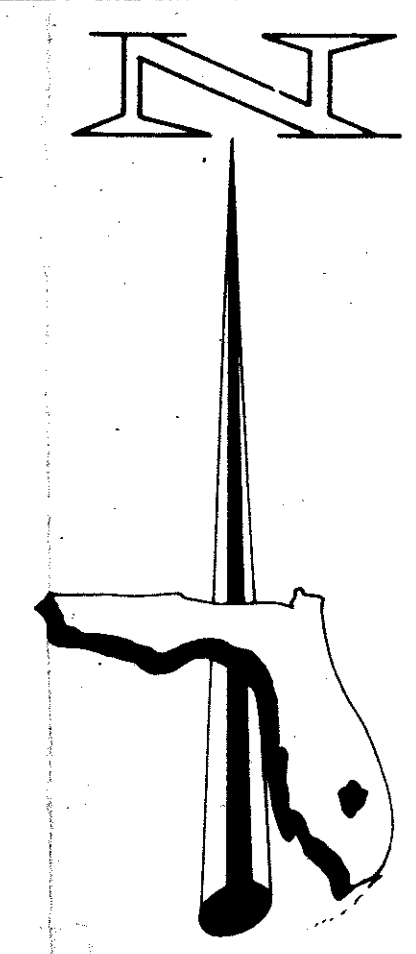


# PLAT No. 3 HOMES AT LAWRENCE

## A PLANNED UNIT DEVELOPMENT

BEING A REPLAT OF A PORTION OF TRACTS 10, 11, 12, 13, AND 16,  
NORTHEAST 1/4 OF SECTION 12 OF AMENDED PLAT OF SECTION 12,  
TWP 45 SOUTH, RGE. 42 EAST, MAY A. LYMAN ET AL, AS  
RECORDED IN PLAT BOOK 9, PAGE 74 OF THE PUBLIC RECORDS OF  
PALM BEACH COUNTY, STATE OF FLORIDA.

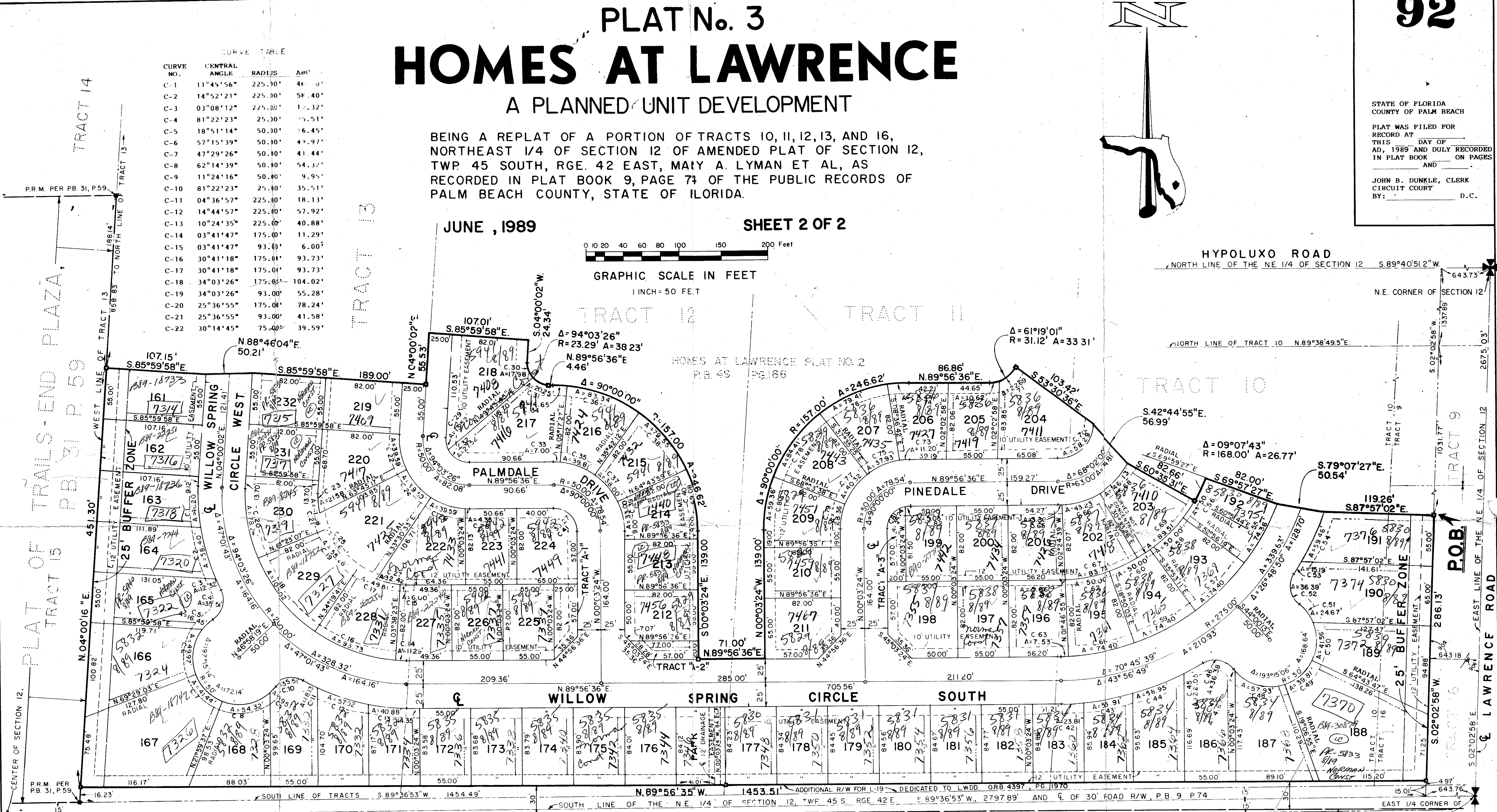
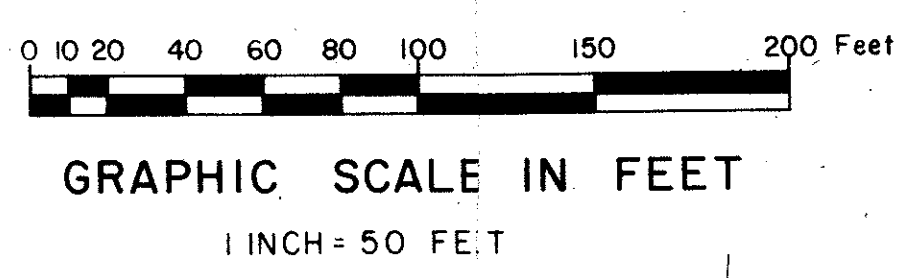


STATE OF FLORIDA  
COUNTY OF PALM BEACH  
PLAT WAS FILED FOR  
RECORD AT  
THIS DAY OF  
AD, 1989 AND DULY RECORDED  
IN PLAT BOOK ON PAGES  
AND  
JOHN B. DUNKLE, CLERK  
CIRCUIT COURT  
BY: D.C.

CURVE TABLE

CURVE NO.	CENTRAL ANGLE	RADIUS	ARC L.
C-1	11°45'56"	225.00'	41.00'
C-2	14°52'21"	225.00'	58.40'
C-3	03°08'12"	225.00'	17.32'
C-4	81°22'23"	25.00'	15.51'
C-5	18°51'14"	50.00'	16.45'
C-6	57°15'39"	50.00'	49.97'
C-7	47°29'26"	50.00'	41.44'
C-8	62°14'39"	50.00'	54.37'
C-9	11°24'16"	50.00'	9.95'
C-10	81°22'23"	25.00'	35.51'
C-11	04°36'57"	225.00'	18.13'
C-12	14°44'57"	225.00'	57.92'
C-13	10°24'35"	225.00'	40.88'
C-14	03°41'47"	175.00'	11.29'
C-15	03°41'47"	93.00'	6.00'
C-16	30°41'18"	175.00'	93.73'
C-17	30°41'18"	175.00'	93.73'
C-18	34°03'26"	175.00'	104.02'
C-19	34°03'26"	93.00'	55.28'
C-20	25°36'55"	175.00'	78.24'
C-21	25°36'55"	93.00'	41.58'
C-22	30°14'45"	75.00'	39.59'

JUNE, 1989 SHEET 2 OF 2



45' EASEMENT TO THE LAKE WORTH DRAINAGE DISTRICT FOR LATERAL CANAL L-19, P.B. 46 P.2  
L.W.D.D. REQ'D R/W FOR L19 CANAL, O.R.B. 1732 P.612  
PR.M., P.B. 46, P.2

CURVE TABLE, CONTINUATION

CURVE NO.	CENTRAL ANGLE	RADIUS	ARC L.	CURVE NO.	CENTRAL ANGLE	RADIUS	ARC L.	CURVE NO.	CENTRAL ANGLE	RADIUS	ARC L.	CURVE NO.	CENTRAL ANGLE	RADIUS	ARC L.
C-23	13°17'50"	93.00'	21.58'	C-38	29°01'47"	17.00'	79.55'	C-53	02°54'06"	300.00'	15.19'	C-68	30°02'05"	88.00'	46.13'
C-24	30°14'44"	75.00'	39.59'	C-39	25°12'37"	5.00'	33.00'	C-54	11°21'25"	300.00'	59.46'	C-69	30°31'32"	168.00'	89.51'
C-25	60°47'19"	93.00'	98.67'	C-40	25°12'37"	19.00'	69.08'	C-55	17°02'29"	250.00'	74.36'	C-70	87°53'18"	38.00'	58.29'
C-26	30°14'44"	75.00'	39.59'	C-41	90°00'00"	5.00'	39.27'	C-56	17°03'08"	168.00'	50.00'	C-71	41°46'09"	31.12'	22.69'
C-27	19°58'17"	93.00'	32.42'	C-42	04°32'52"	30.00'	23.81'	C-57	17°03'08"	250.00'	74.40'	C-72	14°32'52"	31.12'	10.62'
C-28	03°19'13"	75.00'	4.35'	C-43	10°40'41"	30.00'	55.91'	C-58	17°03'08"	168.00'	50.00'	C-73	08°33'18"	75.00'	11.20'
C-29	30°59'14"	25.00'	13.52'	C-44	11°15'32"	30.00'	58.95'	C-59	17°03'08"	250.00'	74.40'	C-74	08°33'18"	157.00'	21.44'
C-30	44°14'17"	23.29'	17.98'	C-45	04°12'39"	30.00'	22.05'	C-60	17°03'08"	168.00'	50.00'	C-75	28°58'43"	75.00'	37.93'
C-31	49°49'09"	23.29'	20.25'	C-46	83°22'27"	5.00'	36.38'	C-61	17°03'08"	250.00'	74.40'	C-76	28°58'43"	157.00'	79.41'
C-32	63°04'12"	25.00'	27.52'	C-47	05°21'12"	0.00'	4.67'	C-62	17°03'08"	168.00'	50.00'	C-77	30°48'13"	75.00'	40.32'
C-33	05°20'51"	75.00'	7.00'	C-48	66°23'03"	0.00'	57.93'	C-63	01°43'31"	250.00'	7.53'	C-78	30°48'13"	157.00'	84.41'
C-34	05°20'51"	157.00'	14.65'	C-49	45°36'52"	0.00'	39.81'	C-64	01°43'31"	168.00'	5.06'	C-79	21°39'46"	75.00'	28.36'
C-35	30°24'45"	75.00'	39.81'	C-50	47°37'41"	0.00'	41.56'	C-65	02°21'15"	88.00'	3.62'	C-80	21°39'46"	157.00'	59.36'
C-36	30°24'45"	157.00'	83.34'	C-51	28°16'18"	0.00'	24.67'	C-66	28°08'47"	88.00'	43.23'	C-81	78°27'47"	25.00'	34.24'
C-37	29°01'47"	75.00'	38.00'	C-52	83°22'27"	5.00'	36.38'	C-67	28°33'18"	168.00'	83.73'	C-82	11°32'13"	25.00'	5.03'

NOTES:  
 1. ALL BEARINGS SHOWN HEREON ARE RELATIVE TO THE NORTH LINE OF THE NORTHEAST QUARTER OF SECTION 12 WHICH IS ASSUMED TO BEAR S. 89° 40' 51.2" W.  
 2. □ DENOTES PERMANENT REFERENCE MONUMENTS (P.R.M.'S).  
 3. ○ DENOTES PERMANENT CONTROL POINTS (P.C.P.'S).  
 4. BUILDING SETBACK LINES SHALL BE AS REQUIRED BY PALM BEACH ZONING REQUIREMENTS.  
 5. THERE SHALL BE NO BUILDINGS OR OTHER STRUCTURES PLACED ON UTILITY EASEMENTS.  
 6. THERE SHALL BE NO BUILDINGS OR ANY KIND OF CONSTRUCTION OR TREES OR SHRUBS PLACED ON DRAINAGE EASEMENTS.  
 7. WHERE DRAINAGE EASEMENTS AND UTILITY EASEMENTS CROSS, DRAINAGE EASEMENTS SHALL TAKE PRECEDENCE.  
 8. APPROVAL OF LANDSCAPING ON UTILITY EASEMENTS OTHER THAN WATER AND SEWER SHALL BE ONLY WITH THE APPROVAL OF ALL UTILITIES OCCUPYING SAME.

0387-003  
 Pet 83-158  
 63/92  
 SIDEWALK REQUIRED  
 TURNOUT REQUIRED  
 ZERO LOT LINE  
 THIS INSTRUMENT WAS PREPARED BY:  
 GEORGE C. PANOS, IN THE OFFICE OF  
 FLORIDA SURVEYING & MAPPING, INC.  
 3361 BELVEDERE ROAD, SUITE N  
 WEST PALM BEACH, FLORIDA 33406  
 FLORIDA SURVEYING & MAPPING, INC.  
 REGISTERED LAND SURVEYORS  
 WEST PALM BEACH, FLORIDA 33406  
 SCALE 1" = 50'  
 DATE JUNE 1984  
 DRN CRG  
 PLAT No. 3, HOMES AT LAWRENCE  
 IN 2 SHEETS, SHEET 2  
 84-49