

# A PLAT OF BOCA LANDINGS NORTH

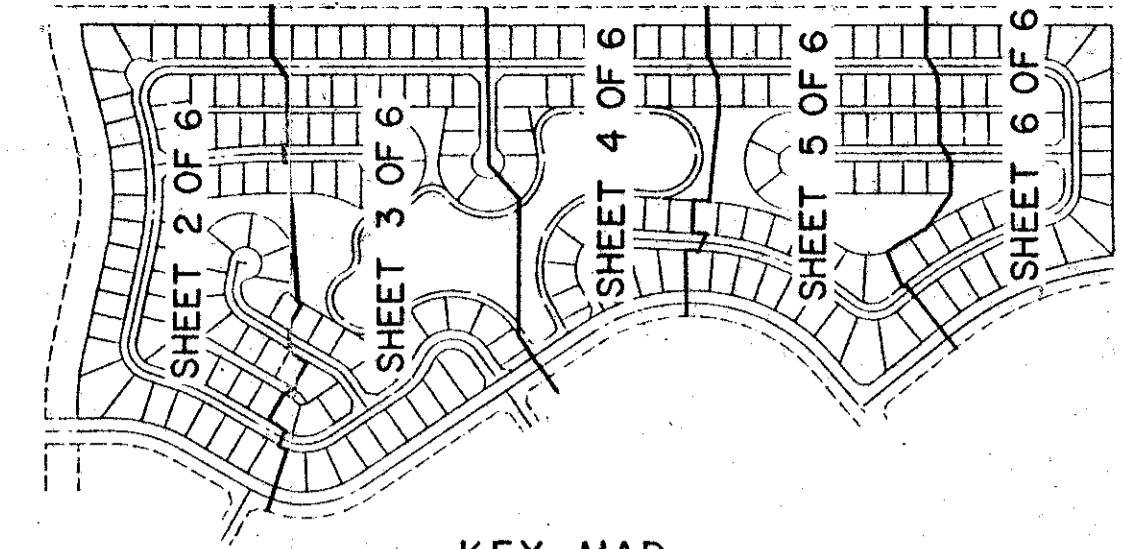
SHEET 6 OF 6

(A PART OF MOON LAKE P.U.D.)

JUNE, 1989

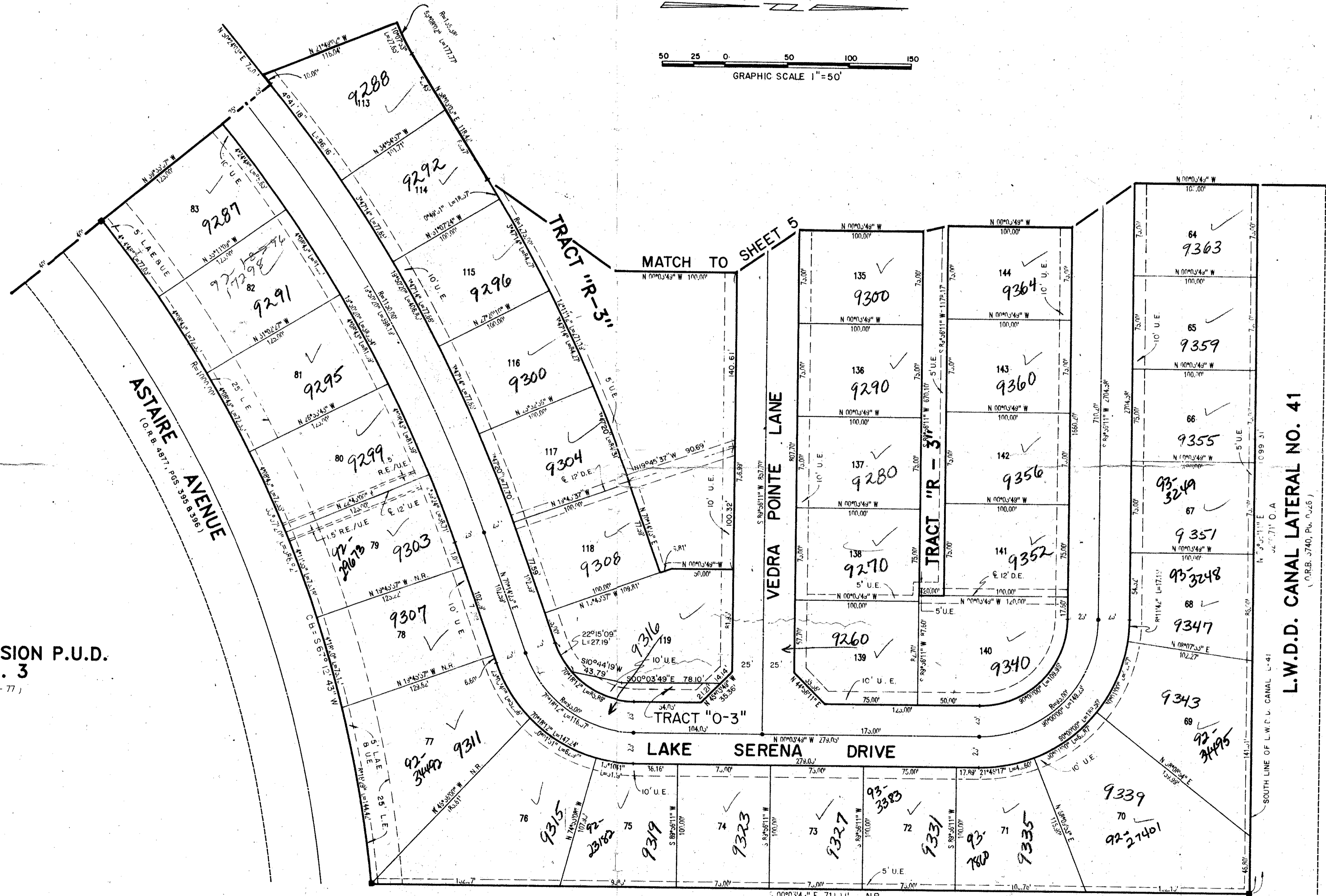
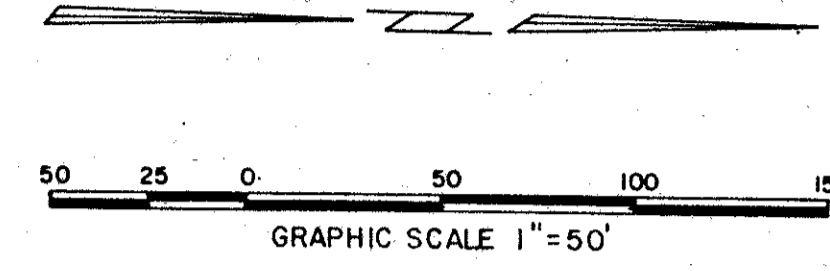
0349-007

# 116



KEY MAP

STATE OF FLORIDA  
 COUNTY OF PALM BEACH  
 This Plat was filed for record at \_\_\_\_\_  
 M. this \_\_\_\_\_ day of \_\_\_\_\_, 19\_\_\_\_  
 and duly recorded in Plat Book No. \_\_\_\_\_  
 on Page \_\_\_\_\_  
 John B. Dunkle, Clerk of the Circuit Court  
 By \_\_\_\_\_ D.C.



**WEITZER SUBDIVISION P.U.D.  
 PLAT NO. 3**  
 (P.B. 33, Pgs. 72 - 77)

**POINT OF COMMENCEMENT**  
 S. E. CORNER OF TRACT 128, BLOCK 73,  
 PALM BEACH FARMS COMPANY PLAT NO. 3  
 (P.B. 2, PGS. 45 - 54)

**SCHOOL PARCEL**  
 (O.R.B. 3899, PG. 1659)

P.O.B.

ADD. BY \_\_\_\_\_  
 CHECKED BY \_\_\_\_\_

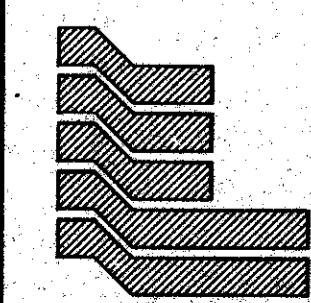
**SPANISH ISLE BOULEVARD**  
 PLAT II  
 (P.B. 37, PGS. 20 - 21)

**L.W.D.D. CANAL LATERAL NO. 41**  
 (O.R.B. 3740, PG. 026)

SUBDIVISION Boca Landings North  
 BOOK 116  
 PAGE 116  
 FLOOD MAP # 2154  
 ZONING 80-206  
 ROAD # 53  
 TAZ 769  
 ZIP CODE 33434  
 MOON LAKE P.U.D.

0349-007  
 Plat. 80-206

# 63/116



**Landmark Surveying & Mapping Inc.**  
 1850 FOREST HILL BOULEVARD  
 PH. (407)433-5405 SUITE 100 W.P.B. FLORIDA

**BOCA LANDINGS NORTH**