

WYCLIFFE - PARCEL B

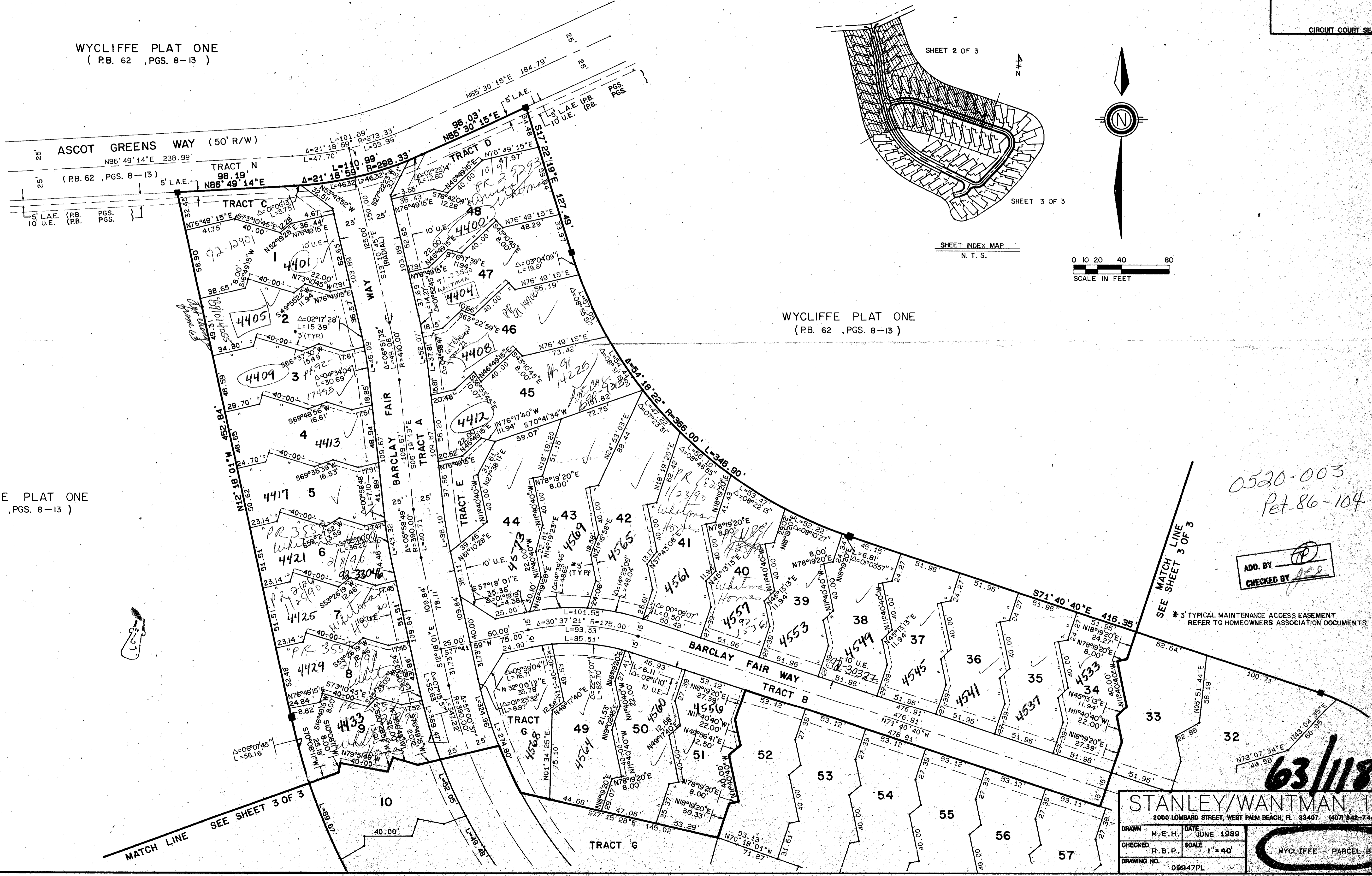
BEING PART OF WYCLIFFE GOLF AND COUNTRY CLUB, P.U.D.
 A REPLAT OF TRACT B OF "WYCLIFFE PLAT ONE" AS RECORDED IN P.B. 62, PGS. 8-13
 SITUATE IN SECTION 25, TOWNSHIP 44 SOUTH, RANGE 41 EAST
 PALM BEACH COUNTY, FLORIDA

JUNE 1989

SHEET 2 OF 3

STATE OF FLORIDA
 COUNTY OF PALM BEACH
 THIS PLAT WAS FILED FOR RECORD THIS DAY OF AD, 1989 AND DULY RECORDED IN PLAT BOOK ON PAGES AND
 JOHN B. DUNKLE, CLERK BY: D.C.
 CIRCUIT COURT SEAL

WYCLIFFE PLAT ONE (P.B. 62, PGS. 8-13)



WYCLIFFE PLAT ONE (P.B. 62, PGS. 8-13)

WYCLIFFE PLAT ONE (P.B. 62, PGS. 8-13)

SUBDIVISION * Wycliffe Parcel B
 BOOK 63 PAGE 117
 FLOOD ZONE B FLOOD MAP # 100B
 ZONING # 03 ZONING KTS 86-104
 ZIP CODE 33467
 PUD NAME
 PUD #

0520-003
Pet. 86-104

ADD. BY [Signature]
 CHECKED BY [Signature]

* 3' TYPICAL MAINTENANCE ACCESS EASEMENT REFER TO HOMEOWNERS ASSOCIATION DOCUMENTS.

63/118

STANLEY/WANTMAN, INC
 2000 LOMBARD STREET, WEST PALM BEACH, FL 33407 (407) 842-7444
 DRAWN M.E.H. DATE JUNE 1989
 CHECKED R.B.P. SCALE 1"=40'
 DRAWING NO. 09947PL
 WYCLIFFE - PARCEL B