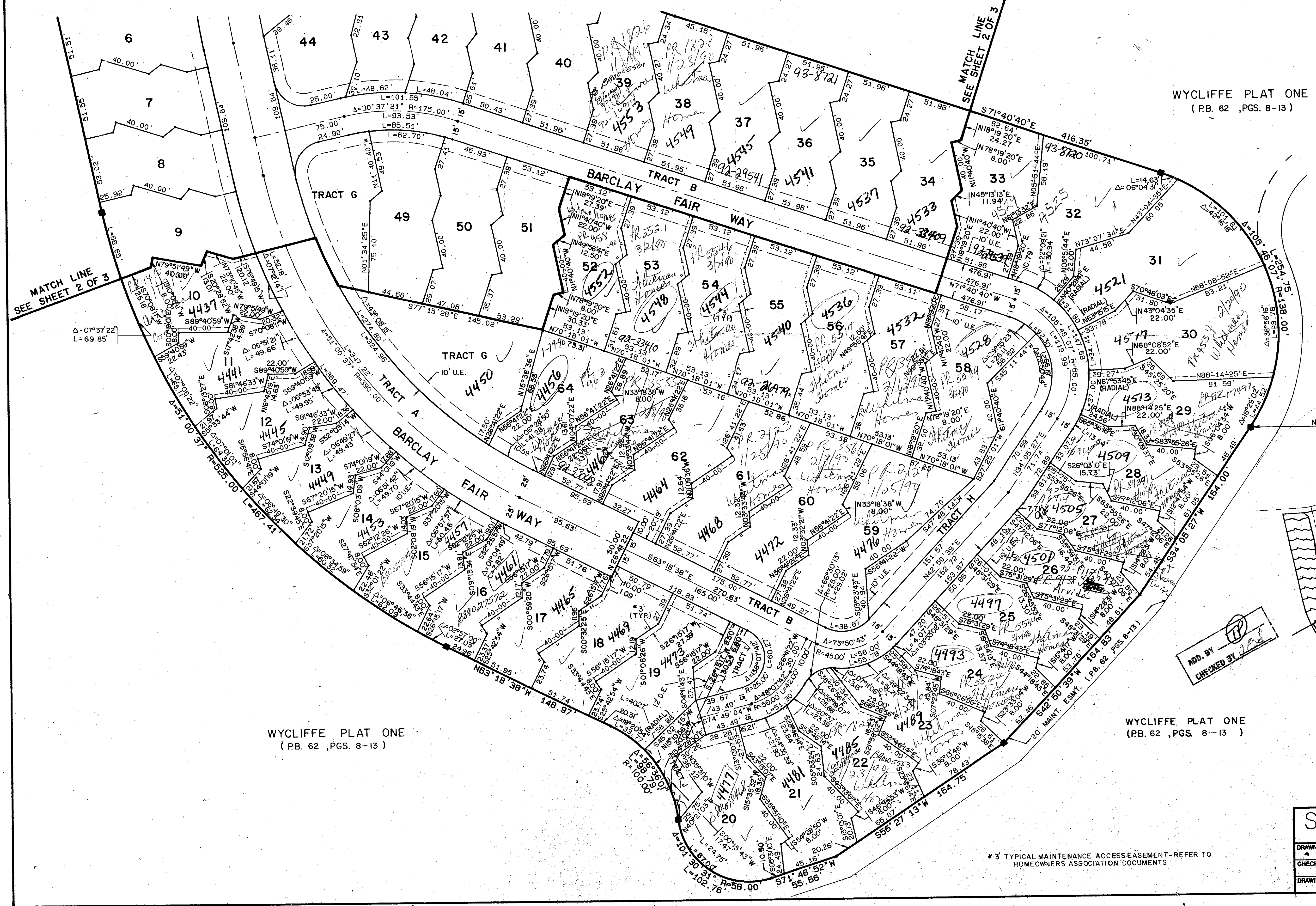


WYCLIFFE - PARCEL B

BEING PART OF WYCLIFFE GOLF AND COUNTRY CLUB, P.U.D.
 A REPLAT OF TRACT B OF "WYCLIFFE PLAT ONE" AS RECORDED IN P.B. 62, PGS. 8-13
 SITUATE IN SECTION 25, TOWNSHIP 44 SOUTH, RANGE 41 EAST
 PALM BEACH COUNTY, FLORIDA

JUNE 1989 SHEET 3 OF 3

STATE OF FLORIDA
 COUNTY OF PALM BEACH
 THIS PLAT WAS FILED FOR RECORD THIS DAY OF AD, 1989 AND DULY RECORDED IN PLAT BOOK ON PAGES AND AND JOHN B. DUNKLE, CLERK BY: D.C.
 CIRCUIT COURT SEAL



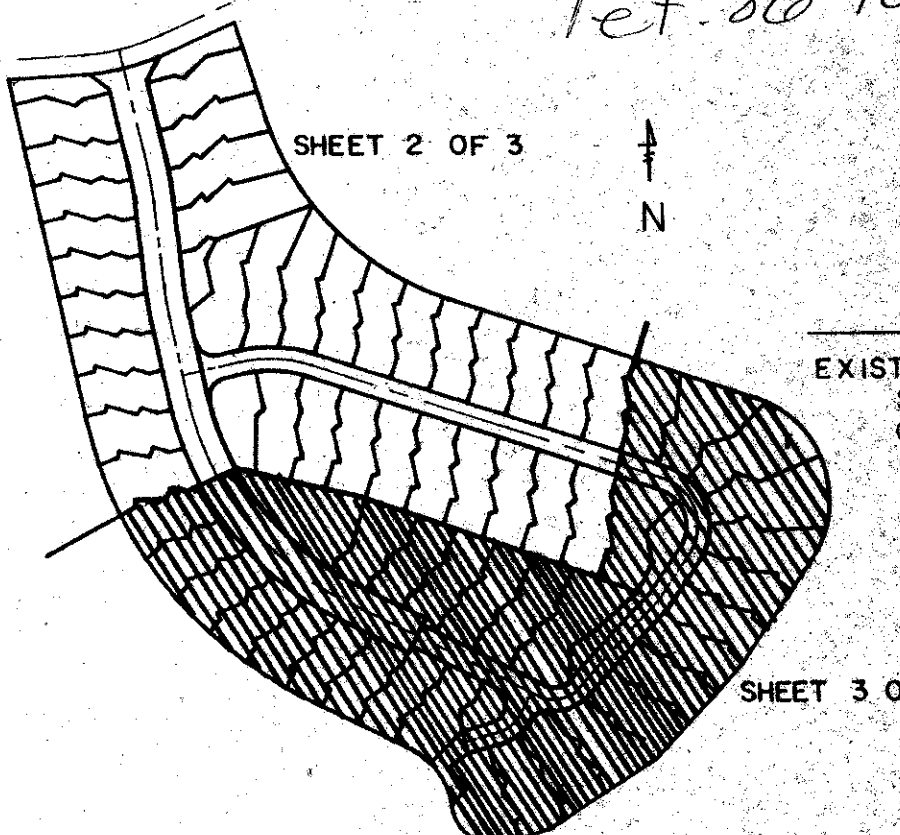
MATCH LINE SEE SHEET 2 OF 3

MATCH LINE SEE SHEET 2 OF 3

WYCLIFFE PLAT ONE (P.B. 62, PGS. 8-13)

SCALE IN FEET

0520-003
 Pet. 86-104



EXISTING P.R.M. #4567 SOUTHEAST CORNER OF WYCLIFFE PLAT ONE (P.B. 62, PGS. 8-13)

ADD. BY
 CHECKED BY

WYCLIFFE PLAT ONE (P.B. 62, PGS. 8-13)

SHEET INDEX MAP N.T.S.

SUBDIVISION * Wycliffe Parcel B
 BOOK 63 PAGE 119
 FLOOD MAP # 100B
 ZONING # 86-104
 QUAD # 63
 ZIP CODE 33467
 # 742-737
 Wycliffe Golf & Country Club

WYCLIFFE PLAT ONE (P.B. 62, PGS. 8-13)

STANLEY/WANTMAN, INC
 2000 LOMBARD STREET, WEST PALM BEACH, FL 33407 (407) 842-7444

DRAWN M.E.H.	DATE JUNE 1989
CHECKED R.B.P.	SCALE 1" = 40'
DRAWING NO. 09947PL	

* 3' TYPICAL MAINTENANCE ACCESS EASEMENT - REFER TO HOMEOWNERS ASSOCIATION DOCUMENTS

63/119

WYCLIFFE - PARCEL B