

# KNIGHTSBRIDGE OF THE POLO CLUB

A PART OF THE POLO CLUB P.U.D.

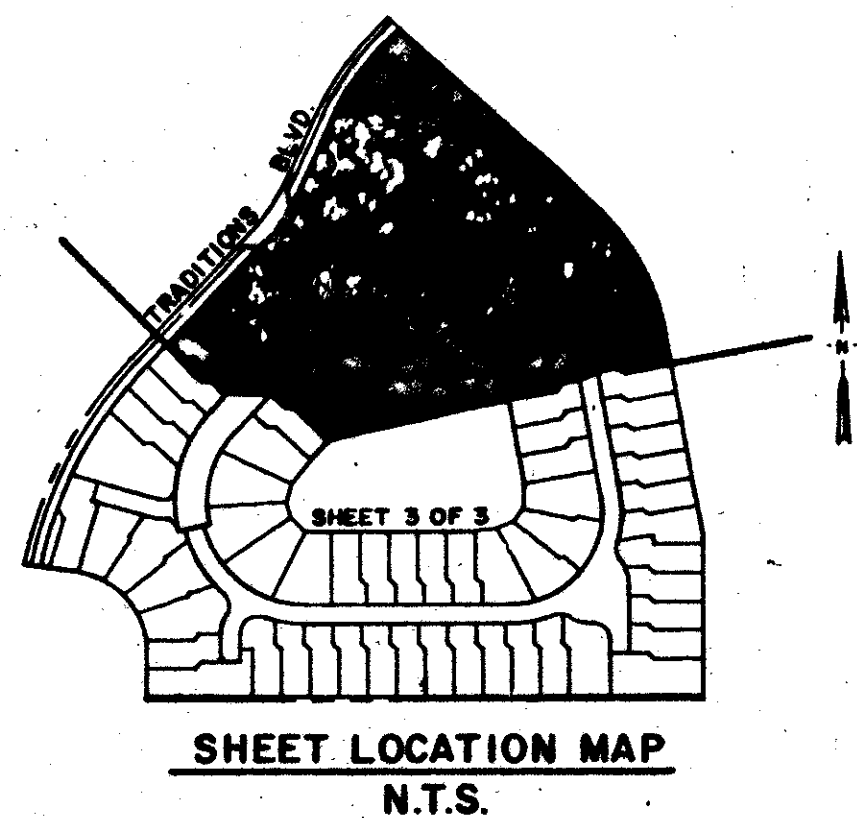
BEING A REPLAT OF A PORTION OF TRACT I, "THE POLO CLUB PLAT III" (P.B. 59, PGS. 110-112)  
SITUATE IN SECTION 26 AND 27, TOWNSHIP 46 SOUTH, RANGE 42 EAST  
PALM BEACH COUNTY, FLORIDA.

AUGUST, 1989

SHEET 2 OF 3

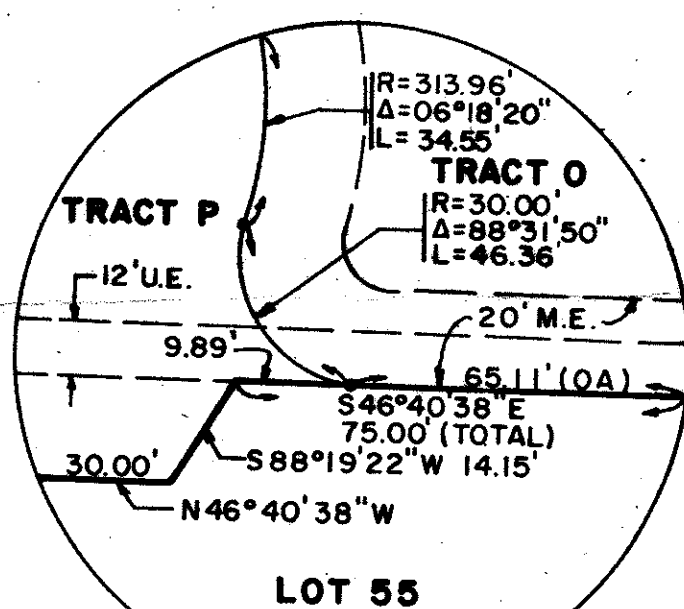
STATE OF FLORIDA  
COUNTY OF PALM BEACH  
THIS PLAT WAS FILED FOR  
RECORD THIS DAY OF  
A.D., 1989 AND DULY RECORDED  
IN PLAT BOOK ON PAGE  
AND  
BY: JOHN B. DUNKLE, CLERK, D.C.

CIRCUIT COURT SEAL

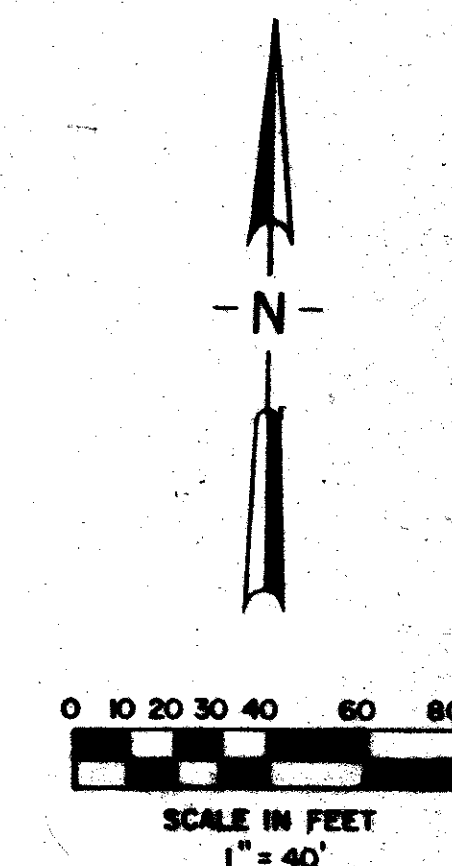


PARCEL TWO  
TRACT LK 16  
(P.B. 61, PGS. 104-106)

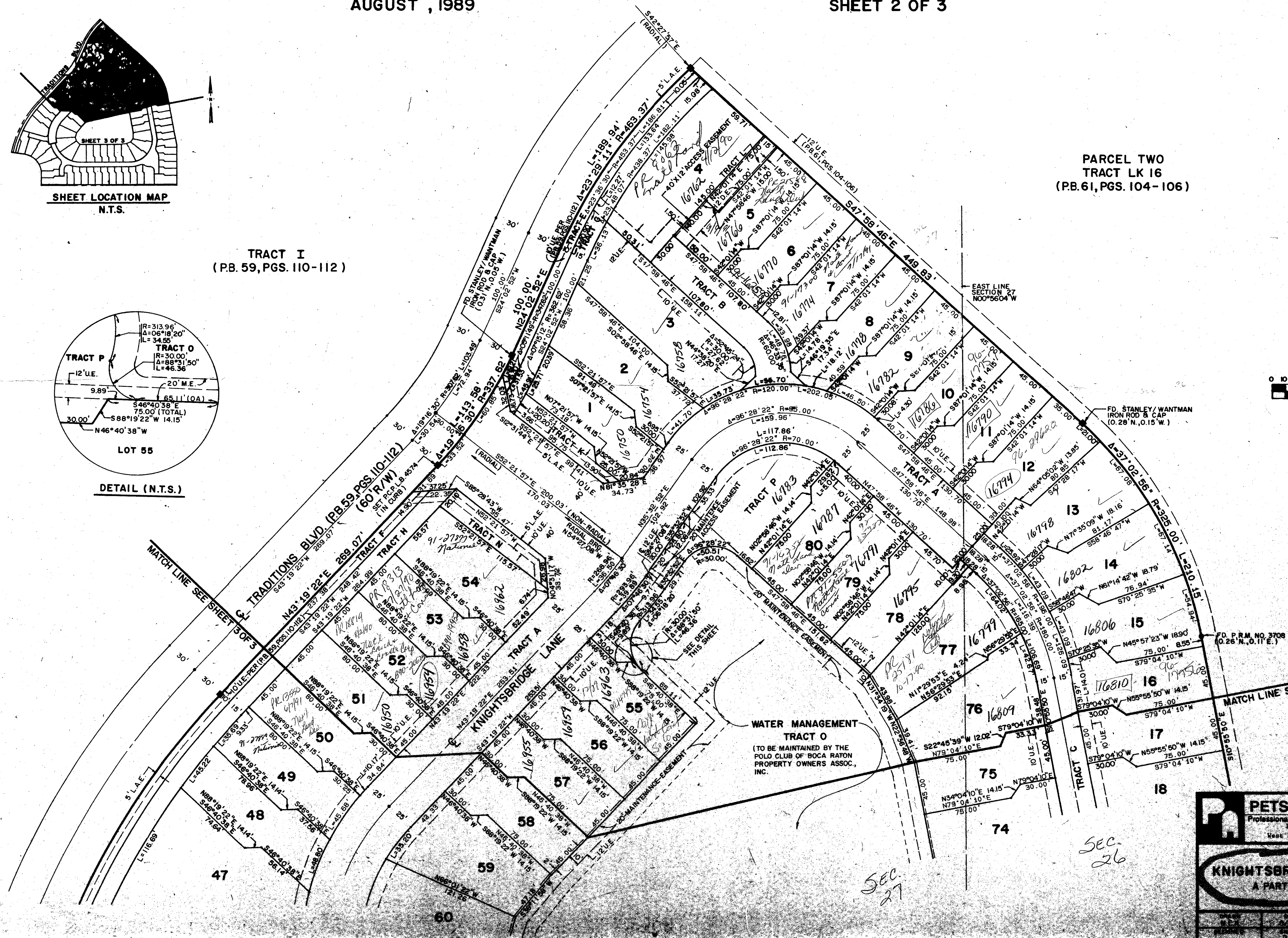
TRACT I  
(P.B. 59, PGS. 110-112)



DETAIL (N.T.S.)



*Knightsbridge of the Polo Club*  
SUBDIVISION # 4  
BOOK 63  
PAGE 121  
FLOOD MAP # 2154  
TOWNSHIP 46  
RANGE 42 EAST  
ZIP CODE 33445  
PLAT # TAZ477  
P.U.D. NAME Polo Club P.U.D.



0436-024  
Plat 84-91

ADD. BY  
CHECKED BY  
63/121

**PETSCHÉ & ASSOCIATES, INC.**  
Professional Engineers - Land Surveyors - Development Consultants  
1760 N. Congress Ave., Suite 203  
West Palm Beach, FL 33409 (407) 640-1800

**KNIGHTSBRIDGE OF THE POLO CLUB**  
A PART OF THE POLO CLUB P.U.D.