

STATE OF FLORIDA
COUNTY OF PALM BEACH
THIS PLAT WAS FILED FOR
RECORD _____ DAY OF
A.D., 1989 AND DULY RECORDED
IN PLAT BOOK _____ ON PAGES
AND _____
JOHN B. DUNKLE, CLERK
BY: _____, D.C.

CIRCUIT COURT SEAL

KNIGHTSBRIDGE OF THE POLO CLUB

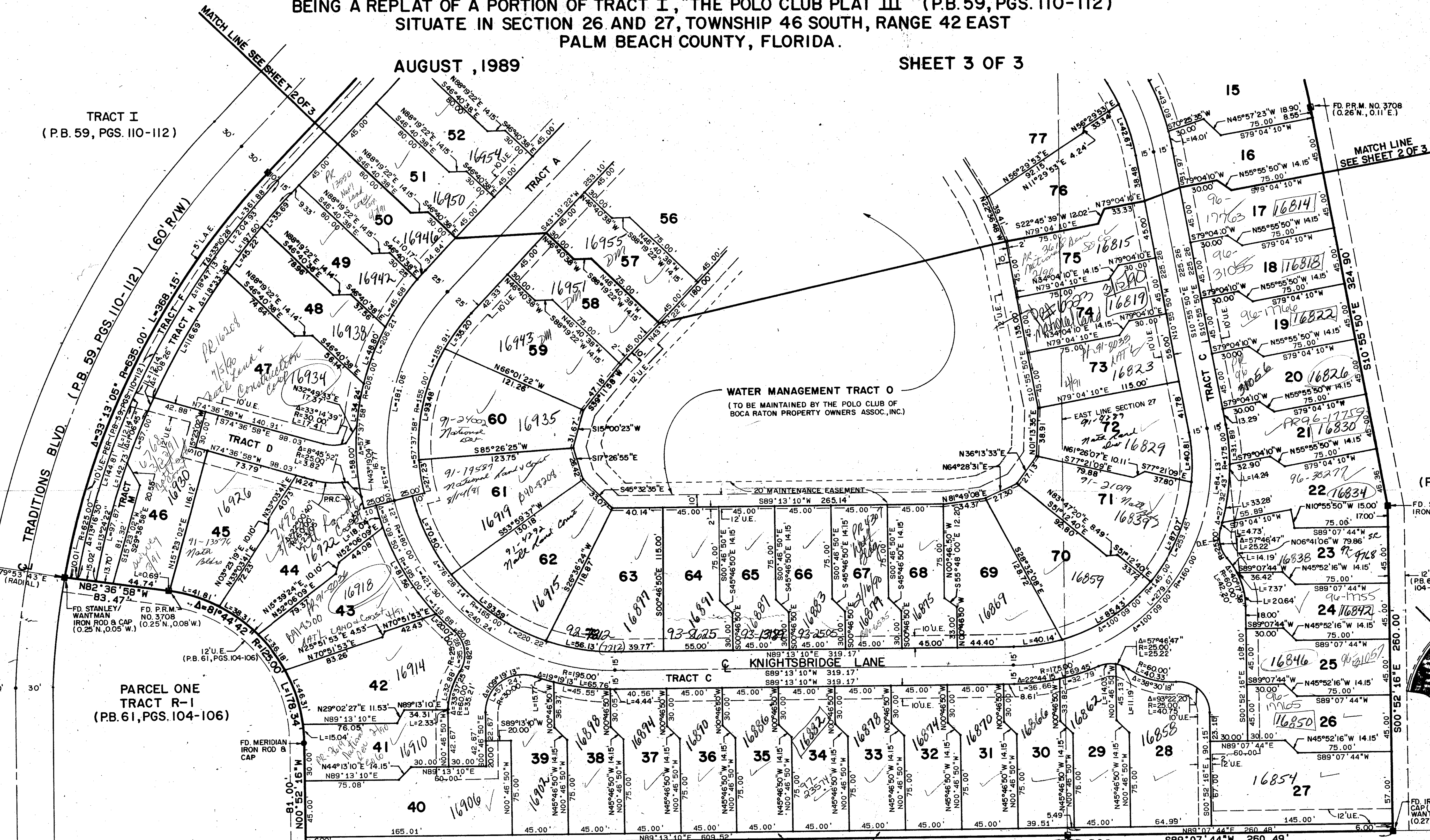
A PART OF THE POLO CLUB P.U.D.

BEING A REPLAT OF A PORTION OF TRACT I, "THE POLO CLUB PLAT III" (P.B. 59, PGS. 110-112)
SITUATE IN SECTION 26 AND 27, TOWNSHIP 46 SOUTH, RANGE 42 EAST
PALM BEACH COUNTY, FLORIDA.

AUGUST, 1989

SHEET 3 OF 3

TRACT I
(P.B. 59, PGS. 110-112)

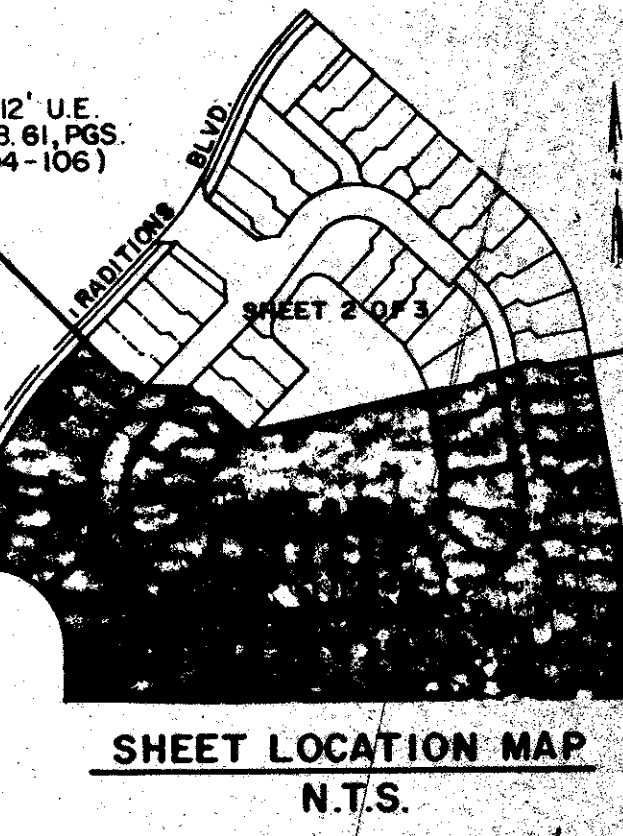


WATER MANAGEMENT TRACT O
(TO BE MAINTAINED BY THE POLO CLUB OF
BOCA RATON PROPERTY OWNERS ASSOC., INC.)

PARCEL ONE
TRACT R-1
(P.B. 61, PGS. 104-106)

PARCEL TWO
TRACT LK 16
(P.B. 61, PGS. 104-106)

SCALE IN FEET
1" = 40'



SUBDIVISION *
BOOK 63
FLOOD MAP # 315A
ZONING # 84-71
QUAD # 37
ZIP CODE 33445
SE TAZ 477
PUD NAME
Polo Club P.U.D.

ADD. BY
CHECKED BY

Pet. 84-71
0436-024

63/122

PETSCHÉ & ASSOCIATES, INC.
Professional Engineers - Land Surveyors - Development Consultants
1760 N. Congress Ave., Suite 203,
West Palm Beach, FL 33409 (407) 640-3800

KNIGHTSBRIDGE OF THE POLO CLUB
A PART OF THE POLO CLUB P.U.D.

DRAWN M.E.H.	DATE 8/19/88	SCALE 1" = 40'	JOB NO. 88-024	SHEET OF 3 3
DESIGNED	CHECKED D.W.G.			

FD. P.R.M. S.W. CORNER (NO NUMBER)
THE POLO CLUB PLAT III
(P.B. 59, PGS. 110-112)

FD. P.R.M. NO. 3708
(0.38 N., 0.06 W.)

1369.78' (P.B. 59, PGS. 110-112)
1369.82' (MEASURED)

L.W.D.D. L-38 CANAL (210' R/W)
(O.R.B. 4299, PG. 552, O.R.B. 5290, PG. 1264)

S89°13'10"W

P.O.B.
FD. P.R.M.
(NO NUMBER)

1392.26' (P.B. 59, PGS. 110-112)
1392.17' (MEASURED)

FD. IRON ROD &
CAP (STANLEY/
WANMAN)
(0.27 N., 0.04 E.)

FD. P.R.M. NO. 3708
S.E. CORNER
"THE POLO CLUB PLAT III"
(P.B. 59, PGS. 110-112)