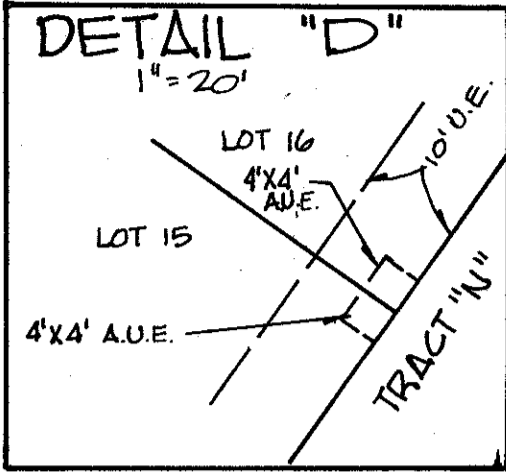


LEGEND
 A.U.E. INDICATES ACME DRAINAGE DISTRICT UTILITY EASEMENT
 P.M. INDICATES A PERMANENT REFERENCE MONUMENT #2424 (P.R.M.)
 P.C.P. INDICATES A PERMANENT CONTROL POINT #2424 (P.C.P.)
 U.E. INDICATES UTILITY EASEMENT
 L.M.E. INDICATES LAKE MAINTENANCE EASEMENT



WYCLIFFE TRACT E

(PART OF WYCLIFFE GOLF AND COUNTRY CLUB, FORMERLY KNOWN AS SUNDIAL COUNTRY CLUB, P.U.D.)
 BEING A REPLAT OF ALL OF TRACT E, AND A PORTION OF TRACT P, WYCLIFFE PLAT ONE, PLAT BOOK 62, PAGES 8-13,
 LYING IN SECTION 25, TOWNSHIP 44 SOUTH, RANGE 41 EAST, PALM BEACH COUNTY, FLORIDA.

SEE SHEET 4 OF 4
 MATCH LINE

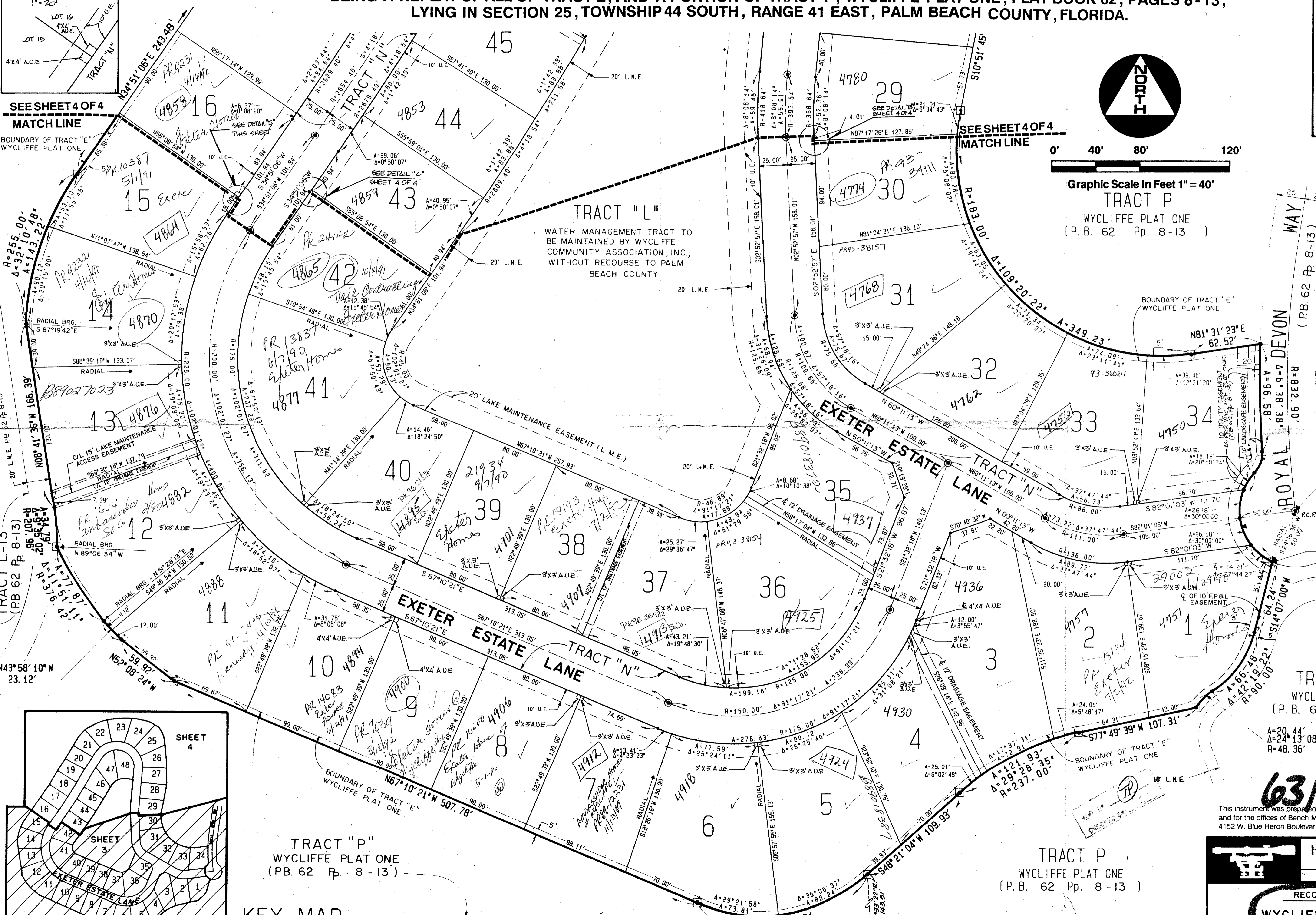
SEE SHEET 4 OF 4
 MATCH LINE



0' 40' 80' 120'

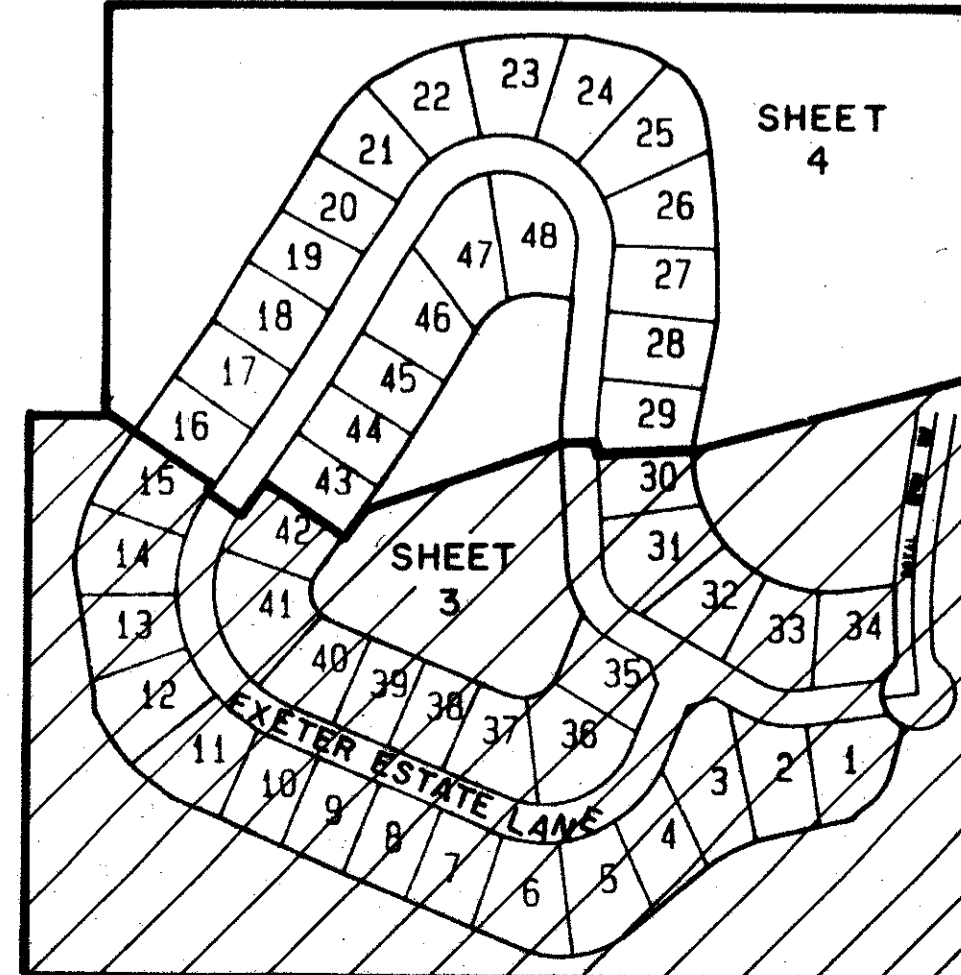
Graphic Scale In Feet 1" = 40'

TRACT P
 WYCLIFFE PLAT ONE
 (P.B. 62 Pp. 8-13)



State Of Florida)
) SS
 County Of Palm Beach)
 This Plat was filed for record at)
) this day of)
 A.D., 1989, and duly recorded in)
) Plat Book _____ on)
) Page _____ through _____)
 John B. Dunkle,
 Clerk of the Circuit Court.
 By: _____
) Deputy Clerk

SUBDIVISION # Wycliffe Tract E
 BOOK 03 PAGE 134
 FLOOD MAP # 100B
 ZONING # RS-86-104
 CUB # 03
 ZIP CODE 33467



P.O.C.
 SOUTHERN MOST TERMINUS
 OF CENTERLINE OF
 ROYAL DEVON WAY
 A=94.76'
 Δ=108°35'01"
 R=50.00'

P.O.B.
 BOUNDARY CORNER
 OF TRACT E

0520-005
 Plat 86-104

63/134

This instrument was prepared by Wm. R. Van Campen, R.L.S., and for the offices of Bench Mark Land Surveying & Mapping, Inc., 4152 W. Blue Heron Boulevard, Suite 121, Riviera Beach, Florida

BENCH MARK
 LAND SURVEYING & MAPPING, INC.

RECORD PLAT
WYCLIFFE TRACT E

OWN	REV	DATE	WD NO	P-07
SCALE: 1" = 40'	SIZE	FB P	SHEET	3 OF 4