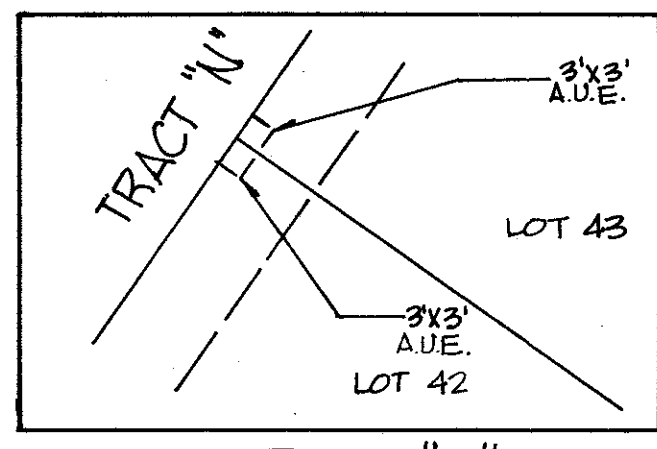


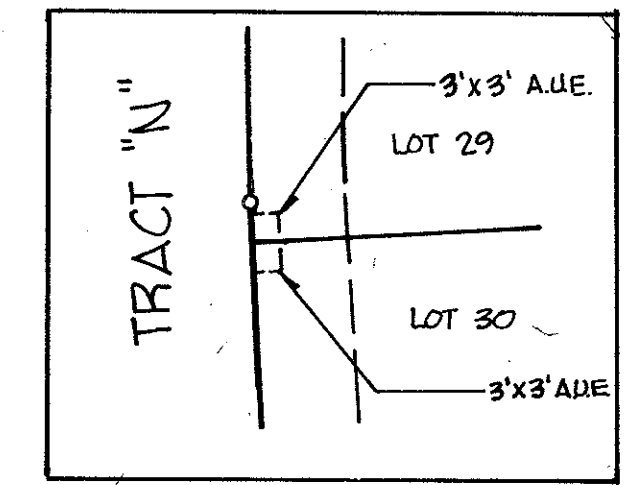
# WYCLIFFE TRACT E

(PART OF WYCLIFFE GOLF AND COUNTRY CLUB, FORMERLY KNOWN AS SUNDIAL COUNTRY CLUB, P.U.D.)  
BEING A REPLAT OF ALL OF TRACT E, AND A PORTION OF TRACT P, WYCLIFFE PLAT ONE, PLAT BOOK 62, PAGES 8-13,  
LYING IN SECTION 25, TOWNSHIP 44 SOUTH, RANGE 41 EAST, PALM BEACH COUNTY, FLORIDA.

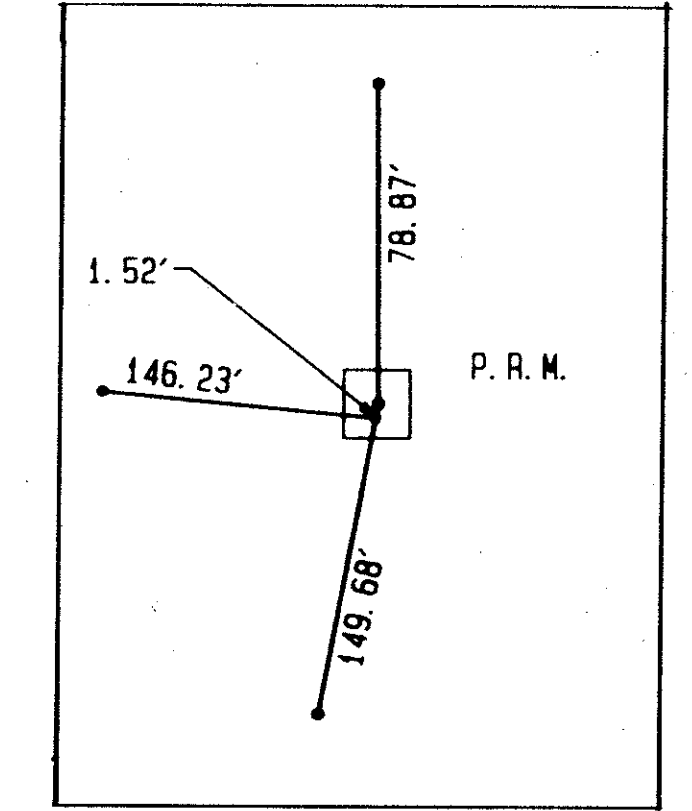
State Of Florida )  
County Of Palm Beach )  
This Plat was filed for record at )  
this day of )  
A.D., 1989, and duly recorded )  
in Plat Book \_\_\_\_\_ on )  
Page \_\_\_\_\_ through \_\_\_\_\_ )  
John B. Dunkle, )  
Clerk of the Circuit Court. )  
By: \_\_\_\_\_ )  
Deputy Clerk



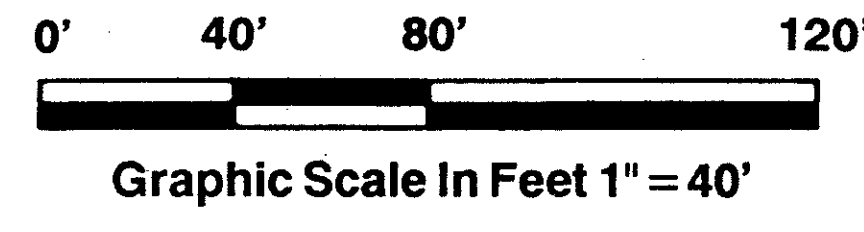
DETAIL "C"  
1" = 20'



DETAIL "B"  
1" = 20'



DETAIL "A"  
1" = 20'



**LEGEND**  
● INDICATES A PERMANENT REFERENCE MONUMENT #2424 (P.R.M.)  
○ INDICATES A PERMANENT CONTROL POINT #2424 (P.C.P.)  
U.E. INDICATES UTILITY EASEMENT  
L.M.E. INDICATES LAKE MAINTENANCE EASEMENT  
A.U.E. INDICATES ACME DRAINAGE DISTRICT UTILITY EASEMENT.

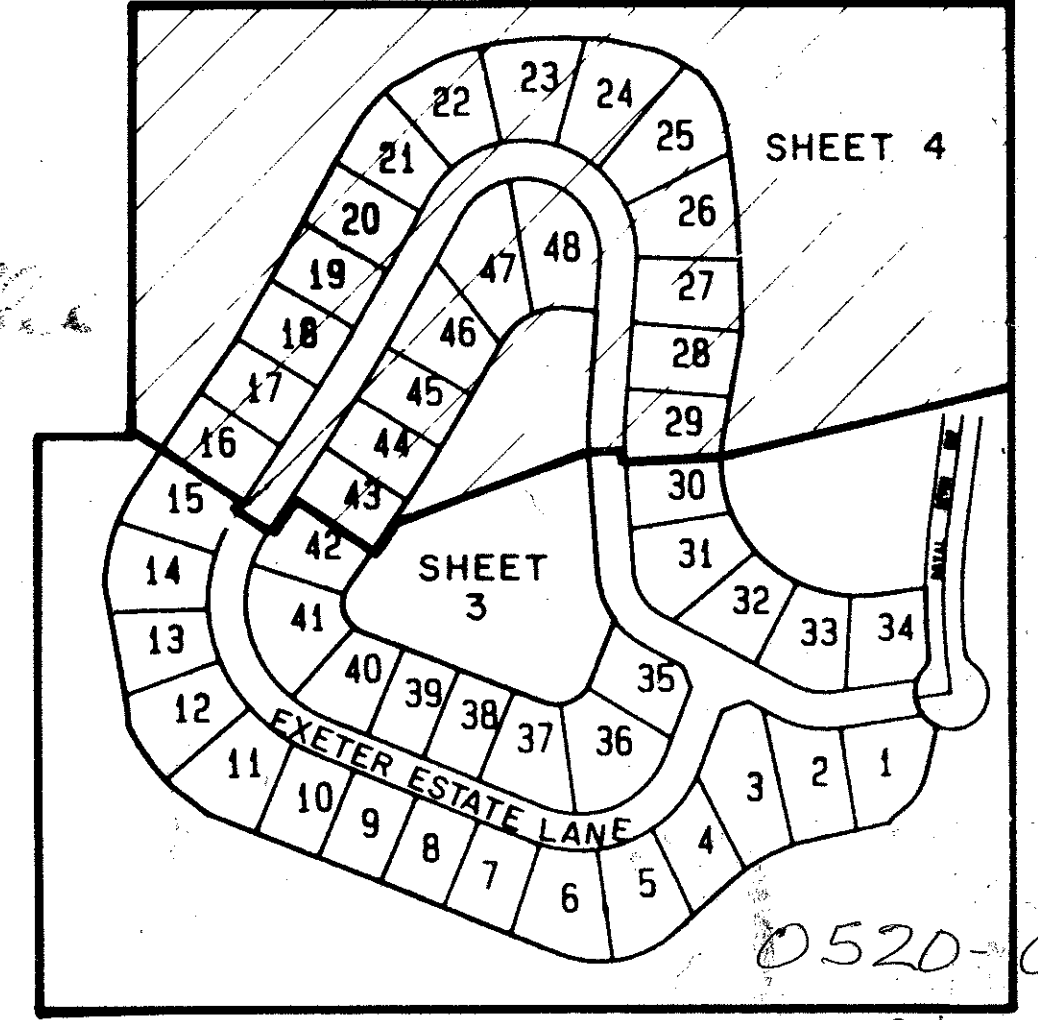
TRACT L-10  
WYCLIFFE PLAT ONE  
(P.B. 62 Pp. 8-13 )

TRACT P  
WYCLIFFE PLAT ONE  
(P.B. 62 Pp. 8-13 )

TRACT P  
WYCLIFFE PLAT ONE  
(P.B. 62 Pp. 8-13 )

TRACT P  
WYCLIFFE PLAT ONE  
(P.B. 62 Pp. 8-13 )

TRACT "L"  
SEE SHEET 3 OF 4



KEY MAP  
NOT TO SCALE

63/135

This instrument was prepared by Wm. R. Van Campen, R.L.S., in and for the offices of Bench Mark Land Surveying & Mapping, Inc., 4152 W. Blue Heron Boulevard Suite 121, Riviera Beach, Florida.

**BENCH MARK**  
LAND SURVEYING & MAPPING, INC.  
WEST PALM BEACH, FLORIDA

RECORD PLAT  
**WYCLIFFE TRACT E**  
OWN \_\_\_\_\_ CKD \_\_\_\_\_ DATE \_\_\_\_\_ WD NO. P-07  
SCALE 1" = 40' SIZE \_\_\_\_\_ FB. P. \_\_\_\_\_ SHEET 4 OF 4

SUBDIVISION \* Wycliffe Tract E  
BOOK 63 PAGE 135  
FLOOD MAP # 1006  
ZONING LITS 86-104  
QUAD # 63  
# 702 737  
DATE

ADD. BY \_\_\_\_\_  
CHECKED BY \_\_\_\_\_