

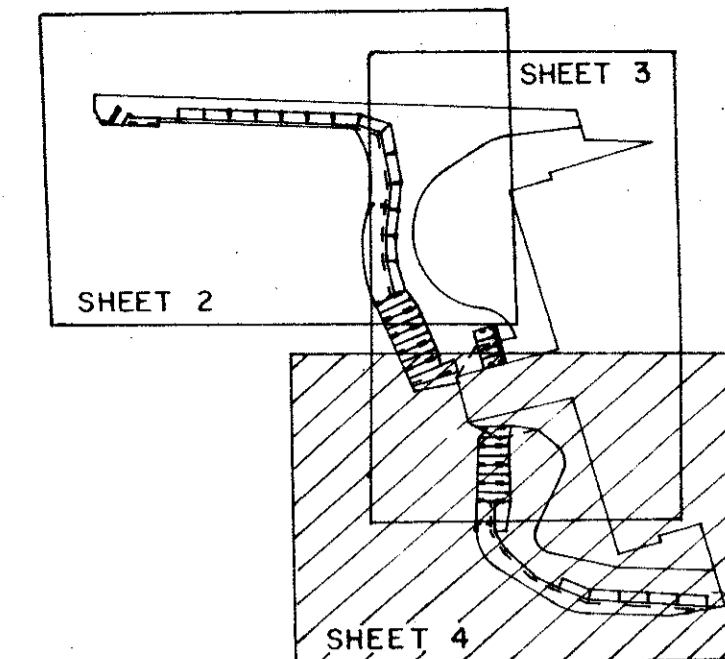
MARINER'S COVE PLAT FOUR

BEING PART OF MARINER'S COVE, A P.U.D.
 A REPLAT OF ACCESS WATERWAY TRACTS 2 & 3 OF "MARINER'S COVE PLAT ONE" (P.B.56 PGS.193-196)
 AND MANGROVE PRESERVES 1 & 2 OF "MARINER'S COVE PLAT TWO" (P.B.59 PGS.132-133).
 SITUATE IN SECTION 29, TOWNSHIP 41 SOUTH, RANGE 43 EAST
 PALM BEACH COUNTY, FLORIDA.

450-004

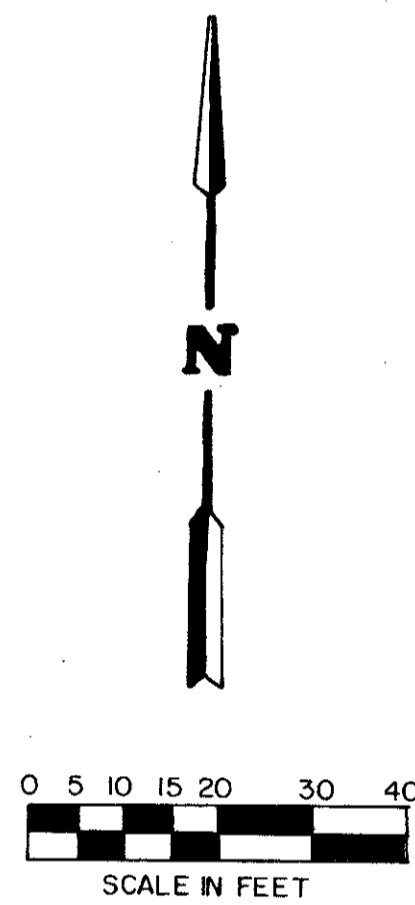
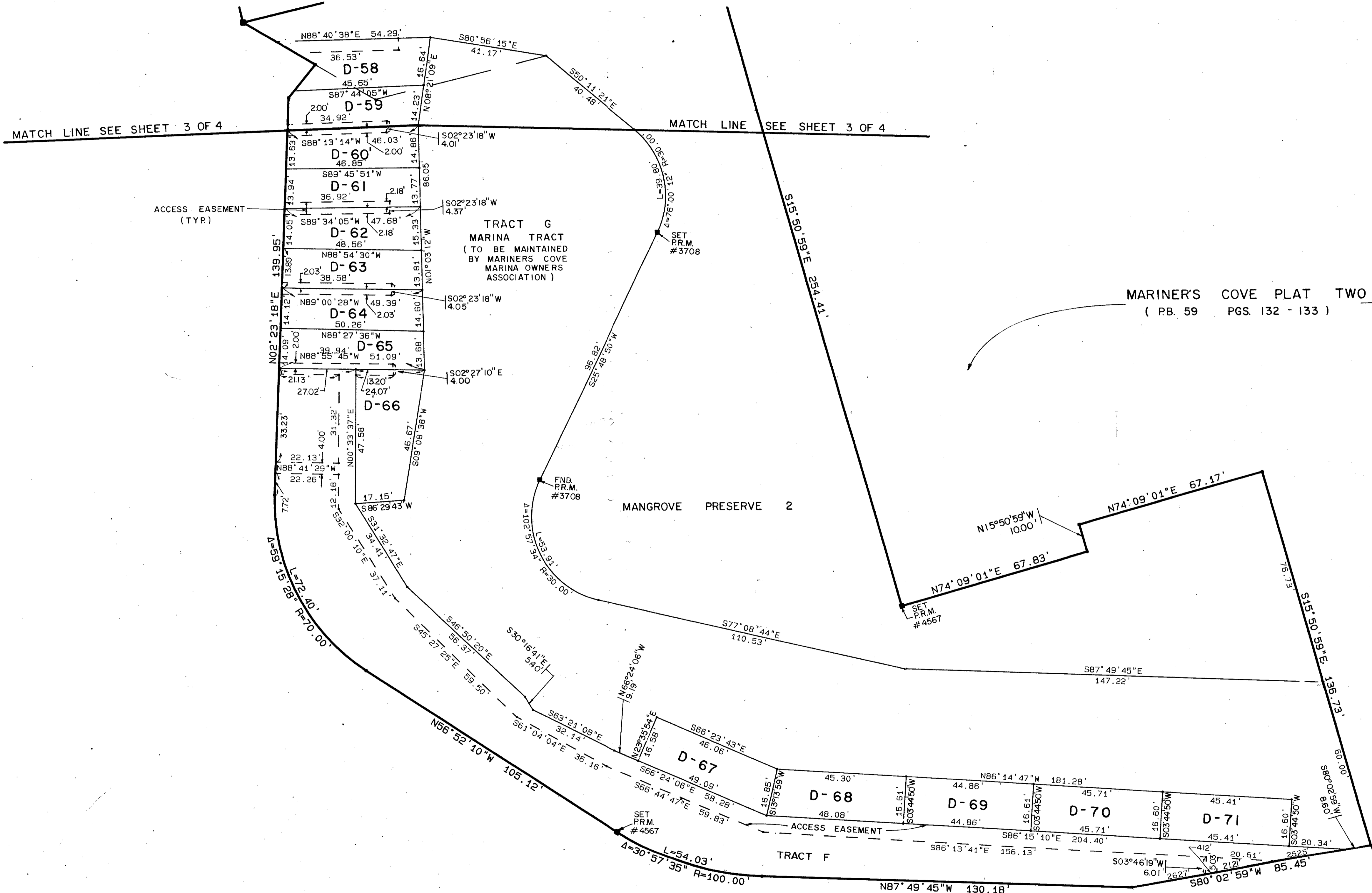
141

STATE OF FLORIDA
 COUNTY OF PALM BEACH
 THIS PLAT WAS FILED FOR
 RECORD _____ DAY OF _____
 AD, 1989 AND DULY RECORDED
 IN PLAT BOOK _____ ON PAGES
 _____ AND _____
 JOHN B. DUNKLE, CLERK
 BY: _____, D.C.



AUGUST, 1989

SHEET 4 OF 4



MARINER'S COVE PLAT TWO
 (P.B. 59 PGS. 132 - 133)

Mariner's Cove Plat Four
 SUBDIVISION *
 BOOK 63 PAGE 141
 FLOOD ZONE A 5-G FLOOD MAP # 1016
 ZONING RS 81-168
 QUAD # 12
 EE TAZ 49
 PUD NAME MARINER'S COVE PUD

0450-004
 Plat. 81-168

63/141

MARINER'S COVE PLAT ONE
 (P.B. 56 PGS. 193 - 196)

STANLEY CONSULTANTS OF FLORIDA, INC.
 ENGINEERS • PLANNERS • SURVEYORS
 2000 LOMBARD STREET, WEST PALM BEACH, FL 33407 (407) 842-7444

DRAWN	P.V.	DATE	AUG. 2, 1989
CHECKED	R.B.P.	SCALE	1"=20'
DRAWING NO. 10065DPL4 D12 R: 86-084-R			
MARINER'S COVE PLAT FOUR REPLAT OF PLAT ONE TRACTS 2 & 3 PLAT TWO MANGROVE PRESERVE 1 & 2 SHEET 4 OF 4			