

EAGLE'S LANDING OF PALM BEACH POLO & COUNTRY CLUB

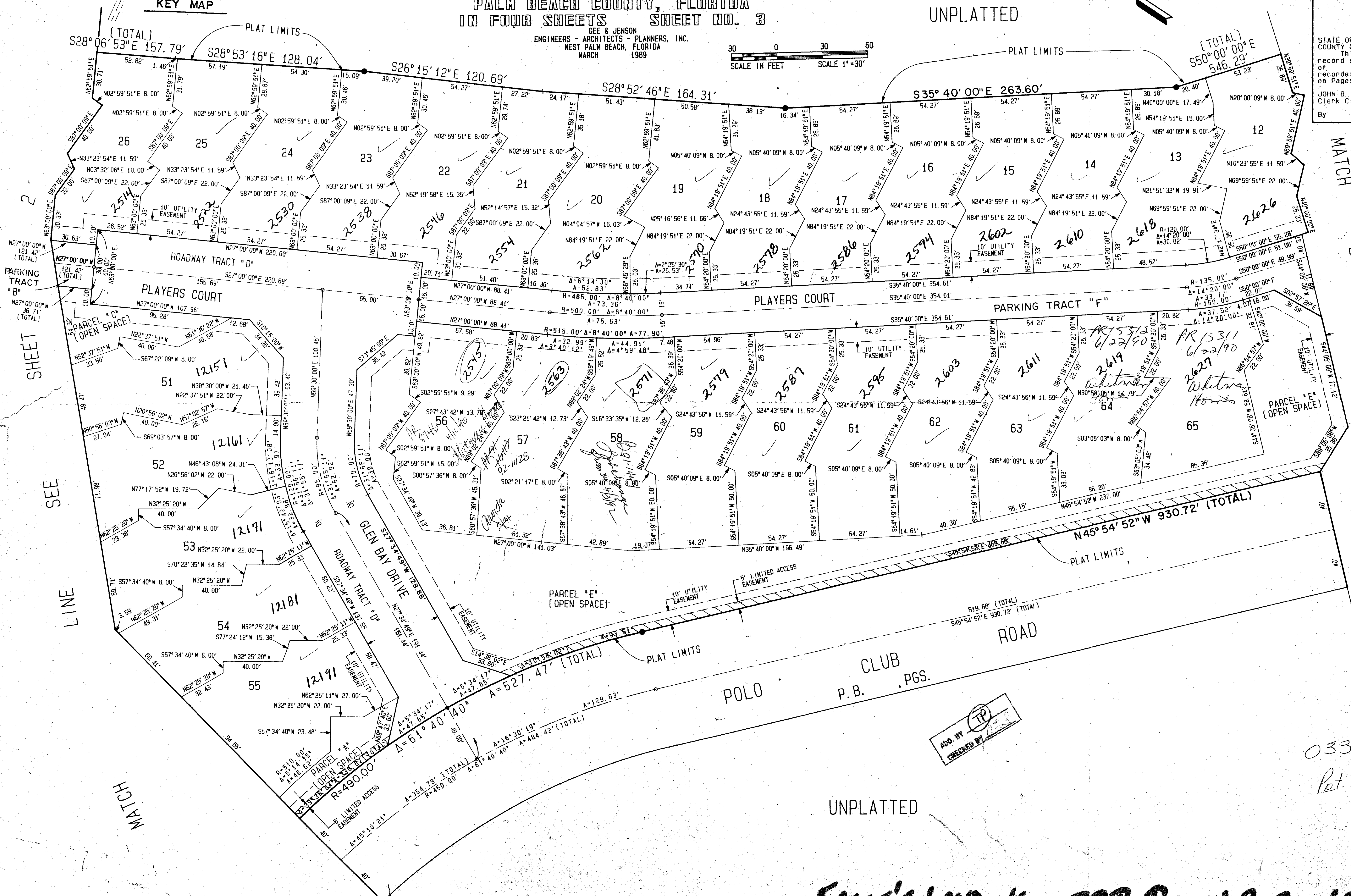
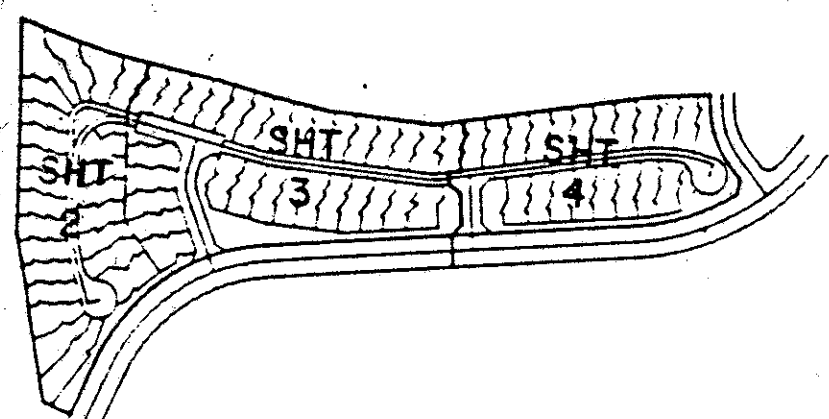
WELLINGTON P. O. D.
IN PART OF SEC. 15, TWP. 44S, RGE. 41E
PALM BEACH COUNTY, FLORIDA
IN FOUR SHEETS SHEET NO. 3

GEE & JENSON
ENGINEERS - ARCHITECTS - PLANNERS, INC.
WEST PALM BEACH, FLORIDA
MARCH 1989

30 0 30 60
SCALE IN FEET SCALE 1"=30'

UNPLATTED

STATE OF FLORIDA
COUNTY OF PALM BEACH
This plat was filed for
record at M. this day
of 1989, and duly
recorded in Plat Book No.
on Pages thru
JOHN B. DUNKLE
Clerk Circuit Court
By: D. C.



SEE SHEET 2

MATCH LINE SEE SHEET 4

Eagle's Landing of Palm Beach
SUBDIVISION * Polo & Country Club
BOOK 63 PAGE 16
FLOOD ZONE 1b
QUAD * 67
SF= 742,728
ZIP CODE 33414
FLOOD MAP # 100B
ZONING AE B6-32
FED. NAME
LOCAL NAME
E.O. 12812 Authority of Palm Beach County, CC

COMPUTED D.B.
DRAWN D.B.
CHECKED J.L.D.
APPROVED J.L.D.

ADD. BY
CHECKED BY

0332-078
Plat. 86-32

EAGLE'S LANDING OF P.B. POLO & C.C. 03/161