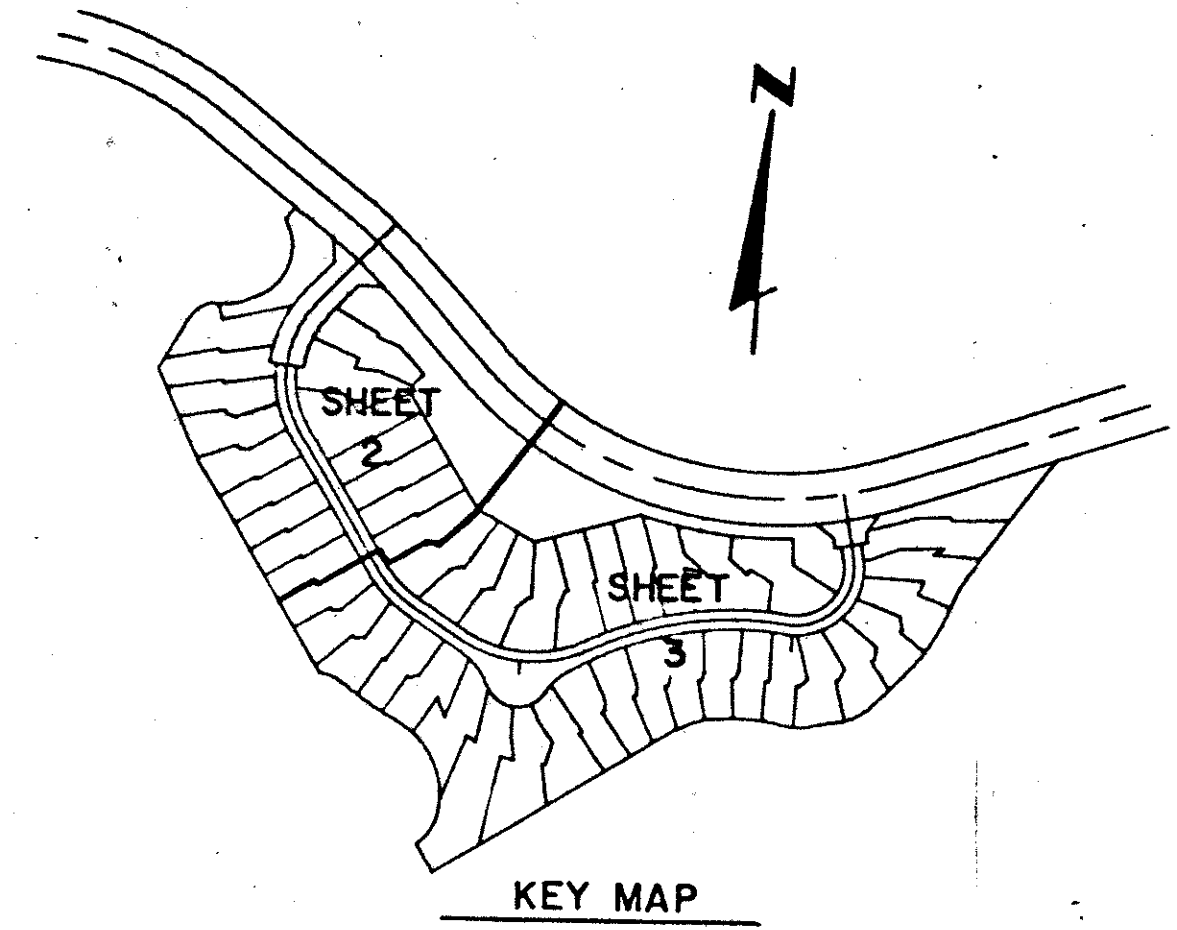
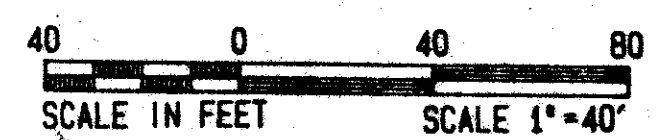


CHUKKER COVE OF PALM BEACH POLO & COUNTRY CLUB

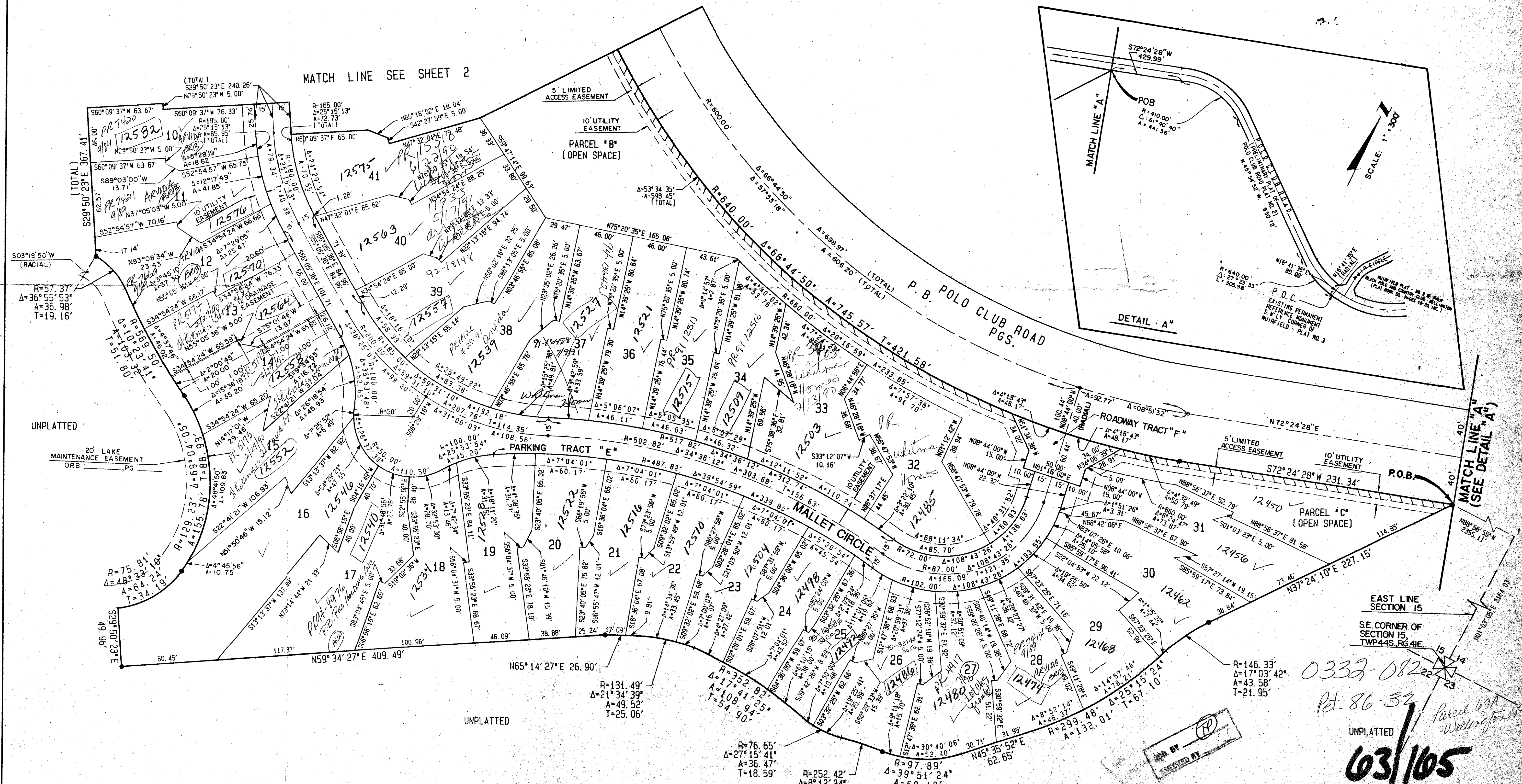
WELLINGTON P. O. D.
IN PART OF SEC. 15, TWP. 44S, RGE. 41E
PALM BEACH COUNTY, FLORIDA
IN THREE SHEETS SHEET NO. 3

GEE & JENSON
ENGINEERS - ARCHITECTS - PLANNERS, INC.
WEST PALM BEACH, FLORIDA
MARCH 1989



STATE OF FLORIDA
COUNTY OF PALM BEACH
This plat was filed for
record at _____ K. this _____ day
of _____ 1989, and duly
recorded in Plat Book No. _____
on Pages _____ thru _____
JOHN B. DUNKLE
Clerk Circuit Court
By: _____

SUBDIVISION - Chukker Cove
BOOK - 63
PAGE - 165
FLOOD MAP - 100B
QUAD - 62
ZONING - A2-36-32
ZIP CODE - 33414
P.O. NAME - Dome Co. sub. com.



COMPUTED D. BACHOR
DRAWN D. BACHOR
CHECKED J.T.D.
APPROVED J.T.D.

APPROVED BY: _____

0332-082-22
Pet. 86-32
Parcel 69A Wellington

603/105

CHUKKER COVE OF P.B. POLO & C.C.