

BREAKERS WEST PLAT NO. 16

THE LAKES - "A PART OF A PLANNED UNIT DEVELOPMENT"
 BEING A REPLAT OF A PORTION OF TRACTS NO. 4, 9, 10, AND 11, BLOCK NO. 2
 "PALM BEACH FARMS COMPANY PLAT NO. 3" (P.B. 2, PGS. 45-54) AND
 A PORTION OF "O-S" TRACT 3, "BREAKERS WEST PLAT NO. 2", (P.B. 36, PGS. 31-35)
 SITUATE IN SECTIONS 29 AND 30, TOWNSHIP 43 SOUTH, RANGE 42 EAST,
 PALM BEACH COUNTY, FLORIDA

JUNE, 1989

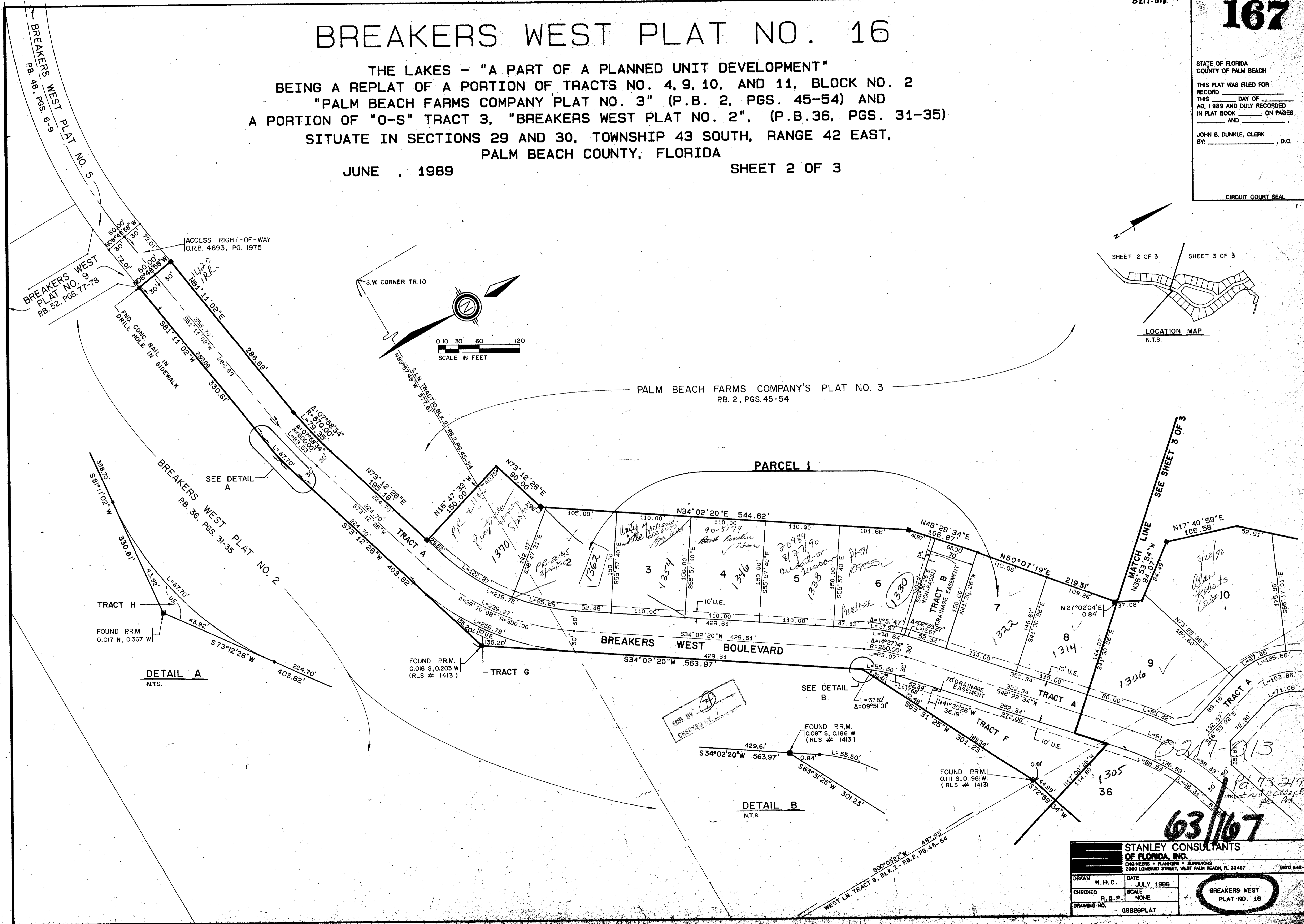
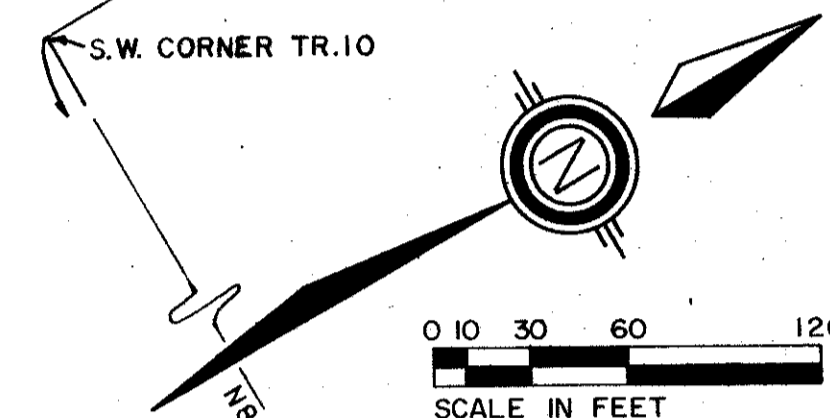
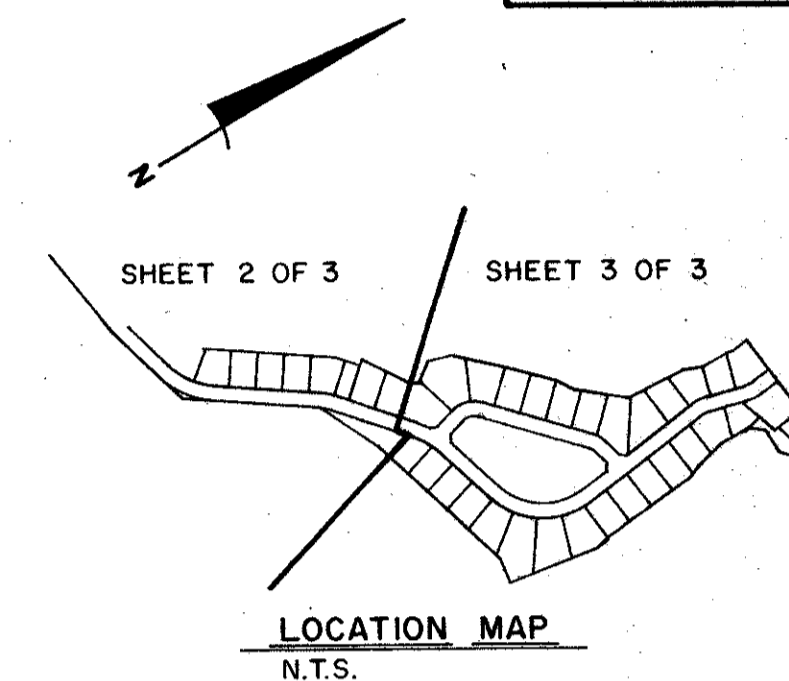
SHEET 2 OF 3

STATE OF FLORIDA
 COUNTY OF PALM BEACH

THIS PLAT WAS FILED FOR
 RECORD _____ DAY OF _____
 AD, 1989 AND DULY RECORDED
 IN PLAT BOOK _____ ON PAGES
 _____ AND _____

JOHN B. DUNKLE, CLERK
 BY: _____, D.C.

CIRCUIT COURT SEAL



REVISION Breakers West Plat 16

BOOK 63 PAGE 167

FLOOD ZONE B FLOOD MAP # 1504

ROAD # 416 ZONING 25 73-219

ZIP CODE 33411

DATE 06/13/89

DETAIL A
N.T.S.

DETAIL B
N.T.S.

APR. BY [Signature]

CHECKED BY [Signature]

STANLEY CONSULTANTS OF FLORIDA, INC.
 ENGINEERS • PLANNERS • SURVEYORS
 2000 LOMBARD STREET, WEST PALM BEACH, FL 33407 (407) 842-7444

DRAWN	M.H.C.	DATE	JULY 1989
CHECKED	R.B.P.	SCALE	NONE
DRAWING NO.	09828PLAT		

BREAKERS WEST PLAT NO. 16

0217-013

63/167

Impact not collected per Pet