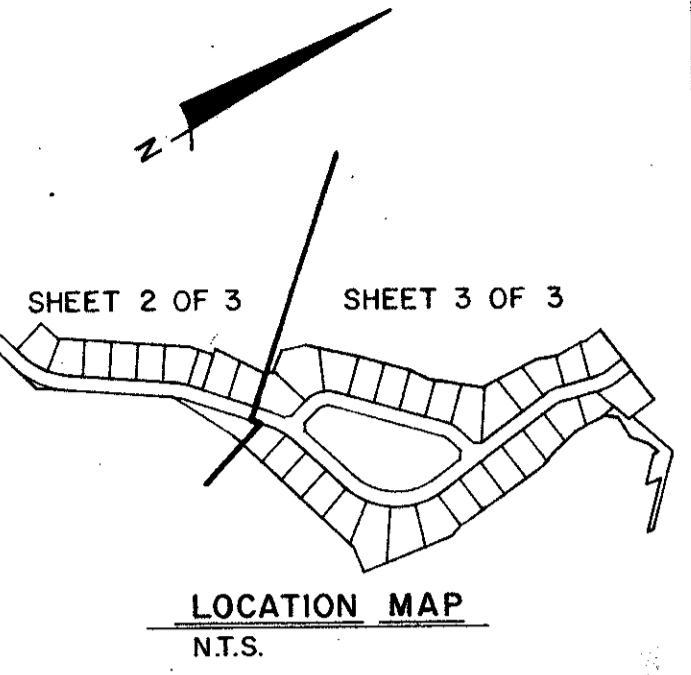


# BREAKERS WEST PLAT NO. 16

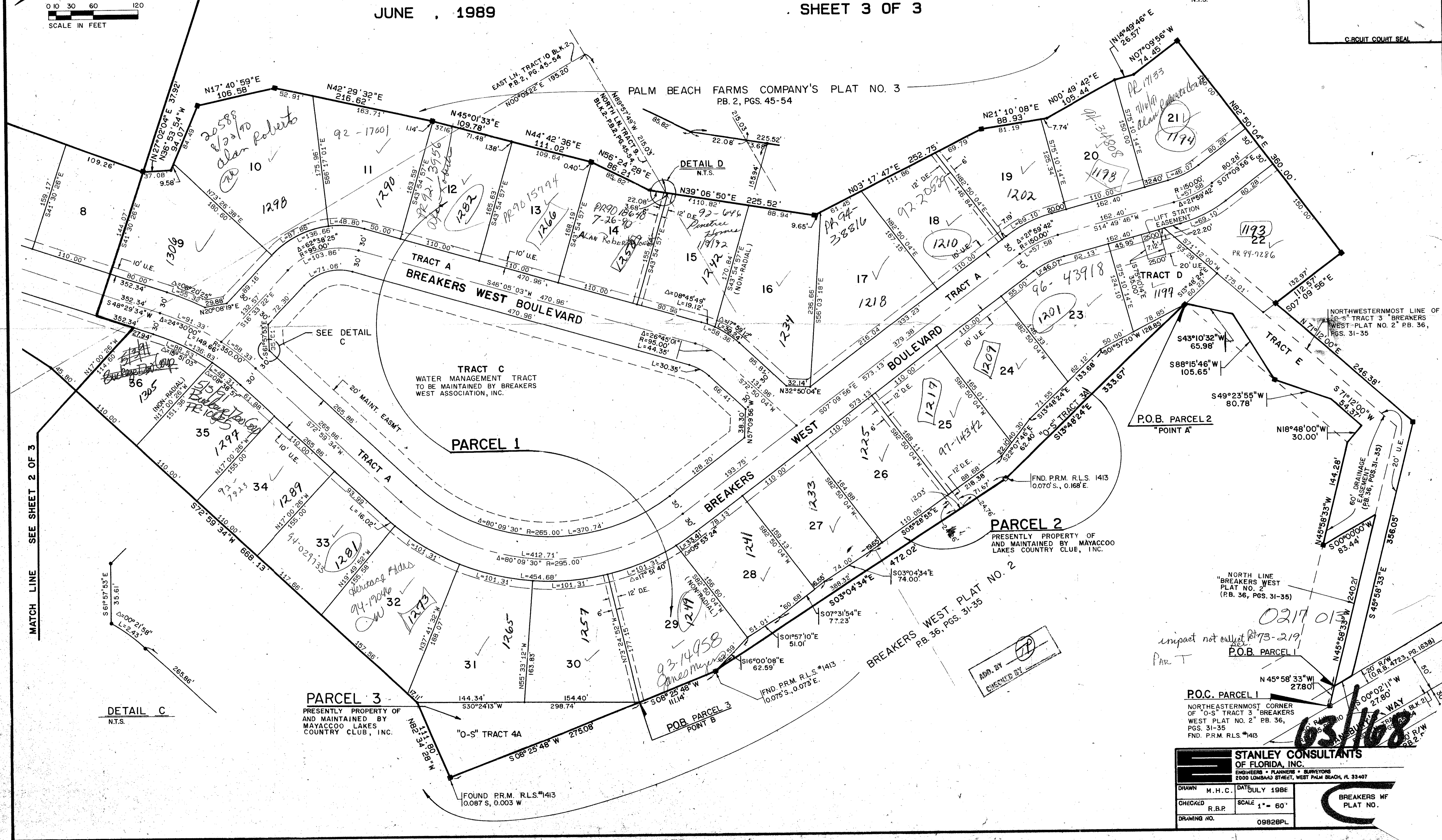
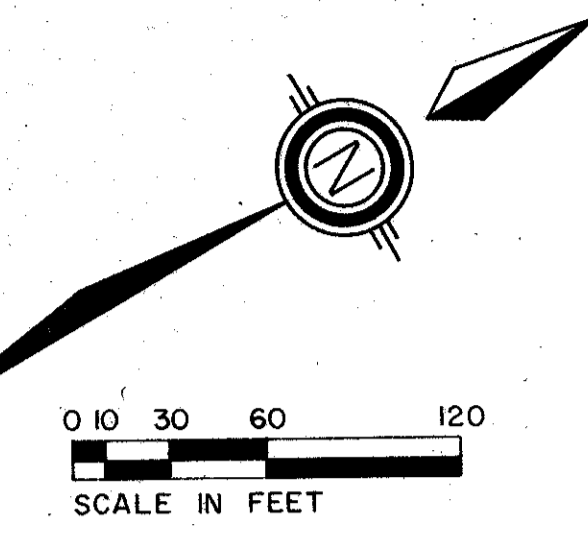
THE LAKES - "A PART OF A PLANNED UNIT DEVELOPMENT"  
 BEING A REPLAT OF A PORTION OF TRACTS NO. 4, 9, 10, AND 11, BLOCK NO. 2  
 "PALM BEACH FARMS COMPANY PLAT NO. 3" (P.B. 2, PGS. 45-54) AND  
 A PORTION OF "O-S" TRACT 3, "BREAKERS WEST PLAT NO. 2", (P.B.36, PGS. 31-35)  
 SITUATE IN SECTIONS 29 AND 30, TOWNSHIP 43 SOUTH, RANGE 42 EAST,  
 PALM BEACH COUNTY, FLORIDA

JUNE, 1989 SHEET 3 OF 3

0217-013



TATE OF FLORIDA  
 COUNTY OF PALM BEACH  
 THIS PLAT WAS FILED FOR  
 RECORD THIS DAY OF  
 AD, 1989 AND DULY RECORDED  
 IN PLAT BOOK ON PAGES  
 AND ON PAGES  
 JOHN B. DUNKLE, CLERK  
 BY: \_\_\_\_\_, D.C.  
 CIRCUIT COURT SEAL



SUBDIVISION \* Breakers West Plat No. 16  
 BOOK 03 PAGE 168  
 FLOOD MAP # 504  
 ZONING ES 73-219  
 QUAD # 416  
 ZIP CODE 33411  
 NAME Breakers West Plat

MATCH LINE SEE SHEET 2 OF 3

DETAIL C  
 N.T.S.

PARCEL 3  
 PRESENTLY PROPERTY OF  
 AND MAINTAINED BY  
 MAYACCO LAKES  
 COUNTRY CLUB, INC.

"O-S" TRACT 4A  
 FOUND P.R.M. R.L.S. #143  
 0.087 S, 0.003 W

TRACT C  
 WATER MANAGEMENT TRACT  
 TO BE MAINTAINED BY BREAKERS  
 WEST ASSOCIATION, INC.

PARCEL 2  
 PRESENTLY PROPERTY OF  
 AND MAINTAINED BY MAYACCO  
 LAKES COUNTRY CLUB, INC.

BREAKERS WEST PLAT NO. 2  
 P.B. 36, PGS. 31-35

P.O.C. PARCEL 1  
 NORTHEASTERMOST CORNER  
 OF "O-S" TRACT 3 "BREAKERS  
 WEST PLAT NO. 2" P.B. 36,  
 PGS. 31-35  
 FND. P.R.M. R.L.S. #143

STANLEY CONSULTANTS  
 OF FLORIDA, INC.  
 ENGINEERS • PLANNERS • SURVEYORS  
 2000 LOMBARD STREET, WEST PALM BEACH, FL 33407

DRAWN M.H.C. DATE JULY 1989  
 CHECKED R.B.P. SCALE 1" = 60'  
 DRAWING NO. 09828PL

BREAKERS WF  
 PLAT NO.

0217 013  
 impact not called for 73-219  
 PAR T  
 P.O.B. PARCEL 1

03/168