

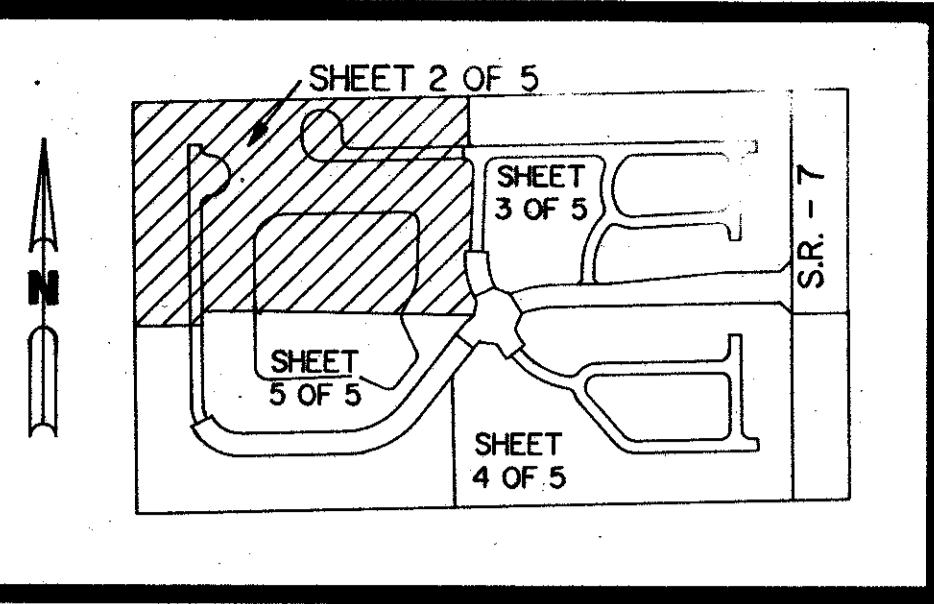
(A P.U.D.)

# ALLEGRO REPLAT

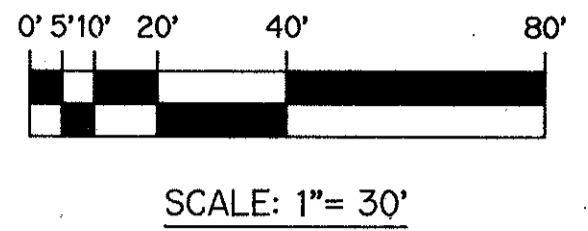
BEING A REPLAT OF THE PLAT OF ALLEGRO AS RECORDED IN PLAT BOOK 60, PAGES 3 THROUGH 7 INCLUSIVE, OF THE PUBLIC RECORDS OF PALM BEACH COUNTY, FLORIDA. SECTION 25, TOWNSHIP 47 SOUTH, RANGE 41 EAST PALM BEACH COUNTY, FLORIDA

SHEET 2 OF 5

FEBRUARY, 1989



KEY MAP N.T.S.

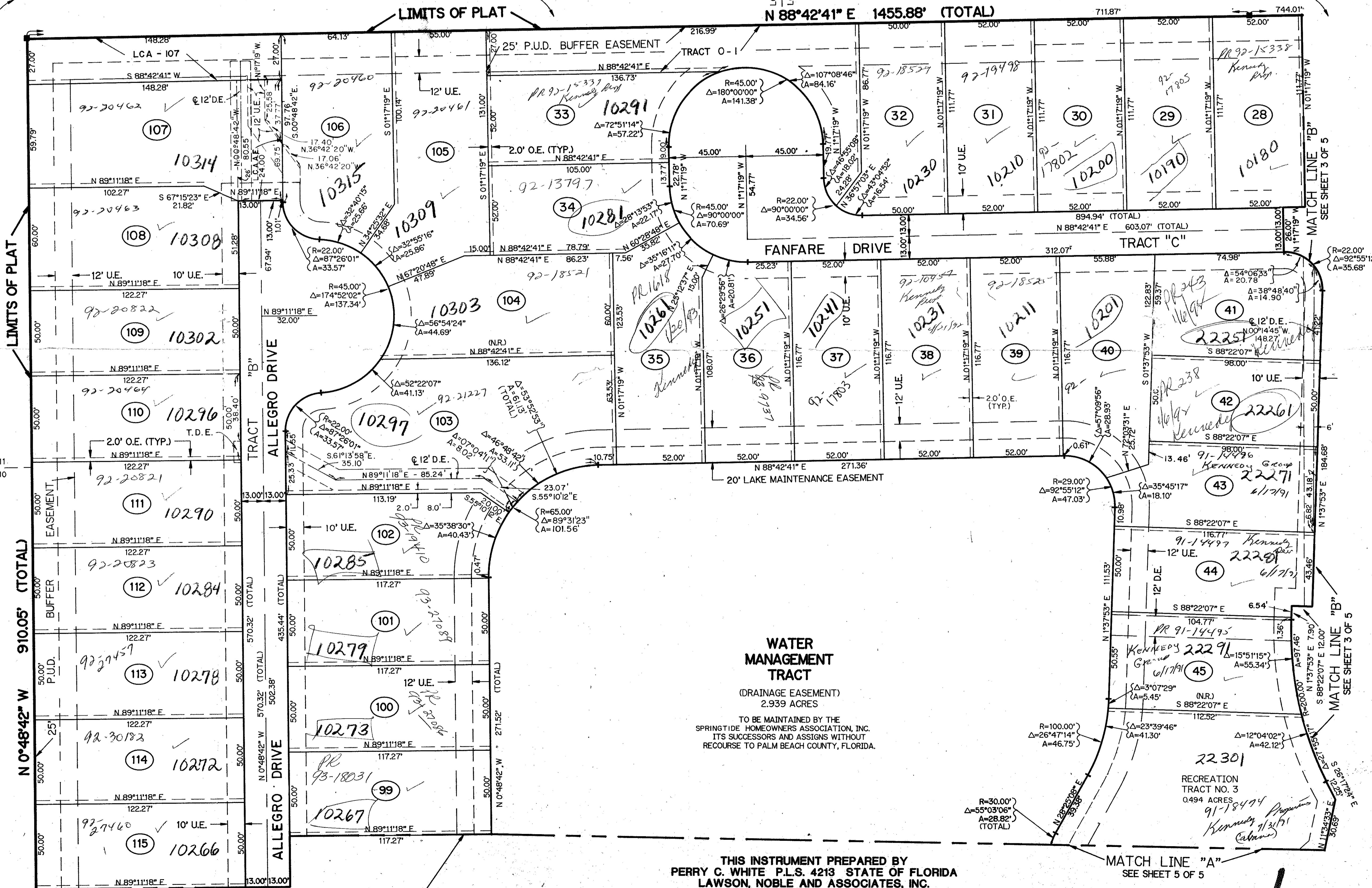


LOT 11 OF FLORIDA FRUIT LANDS SUBDIVISION NO. 2 P.B. 1, PG. 102

LOT 6 OF FLORIDA FRUIT LANDS SUBDIVISION NO. 2 P.B. 1, PG. 102

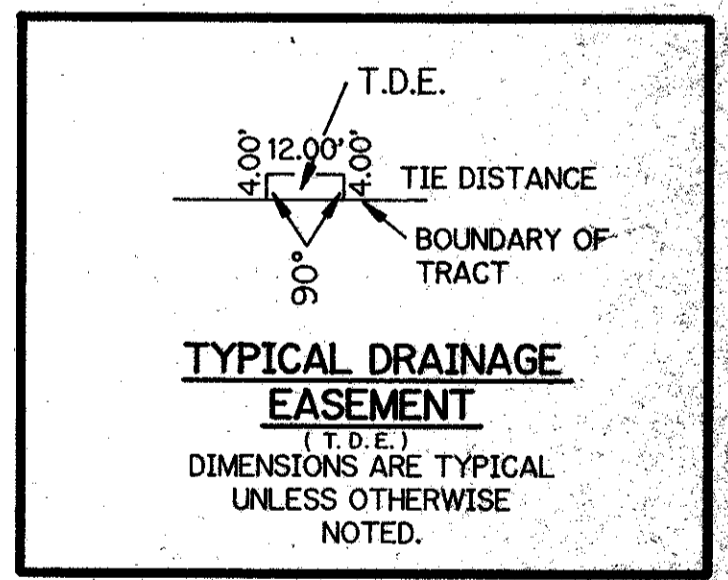
LOT 11 OF FLORIDA FRUIT LANDS SUBDIVISION NO. 2 P.B. 1, PG. 102

LOT 10 OF FLORIDA FRUIT LANDS SUBDIVISION NO. 2 P.B. 1, PG. 102



SUBDIVISION - Allegro Replat  
BOOK 63 PAGE 193  
FLOOD MAP #1008  
ROAD # 69 ZONING RS 85-170  
TAZ 781  
ALLEGRO REPLAT

**WATER MANAGEMENT TRACT**  
(DRAINAGE EASEMENT)  
2.939 ACRES  
TO BE MAINTAINED BY THE SPRINGTIDE HOMEOWNERS ASSOCIATION, INC. ITS SUCCESSORS AND ASSIGNS WITHOUT RECOURSE TO PALM BEACH COUNTY, FLORIDA.



THIS INSTRUMENT PREPARED BY PERRY C. WHITE P.L.S. 4213 STATE OF FLORIDA LAWSON, NOBLE AND ASSOCIATES, INC. ENGINEERS PLANNERS TESTING SURVEYORS BOYNTON BEACH, FLORIDA

ALLEGRO REPLAT 63/193

APPROVED BY [Signature]

0525-002  
Pet. 85-170  
collect