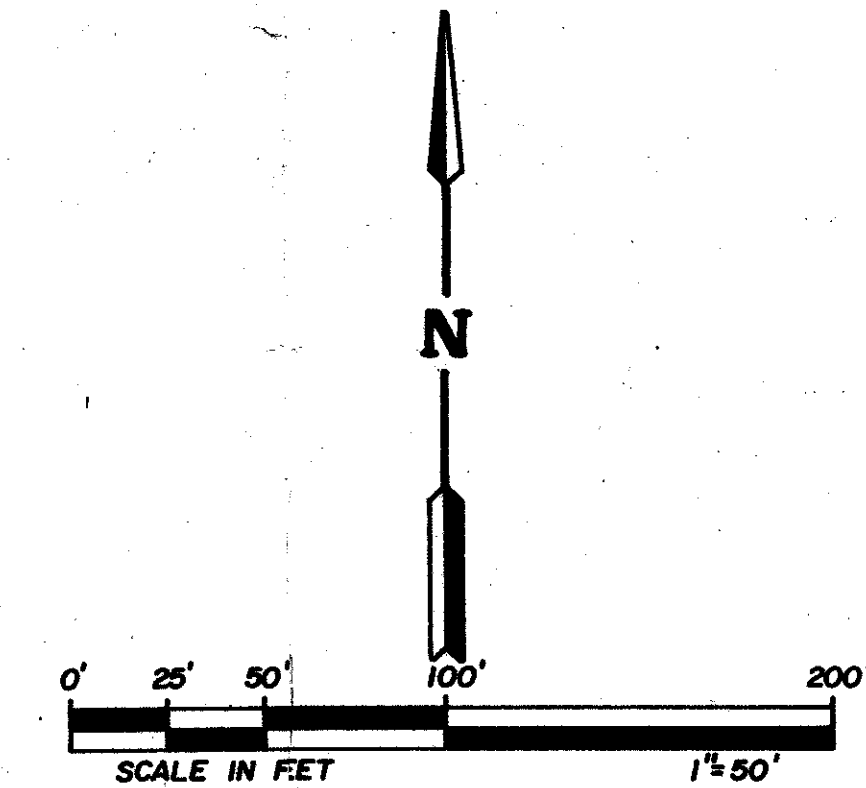
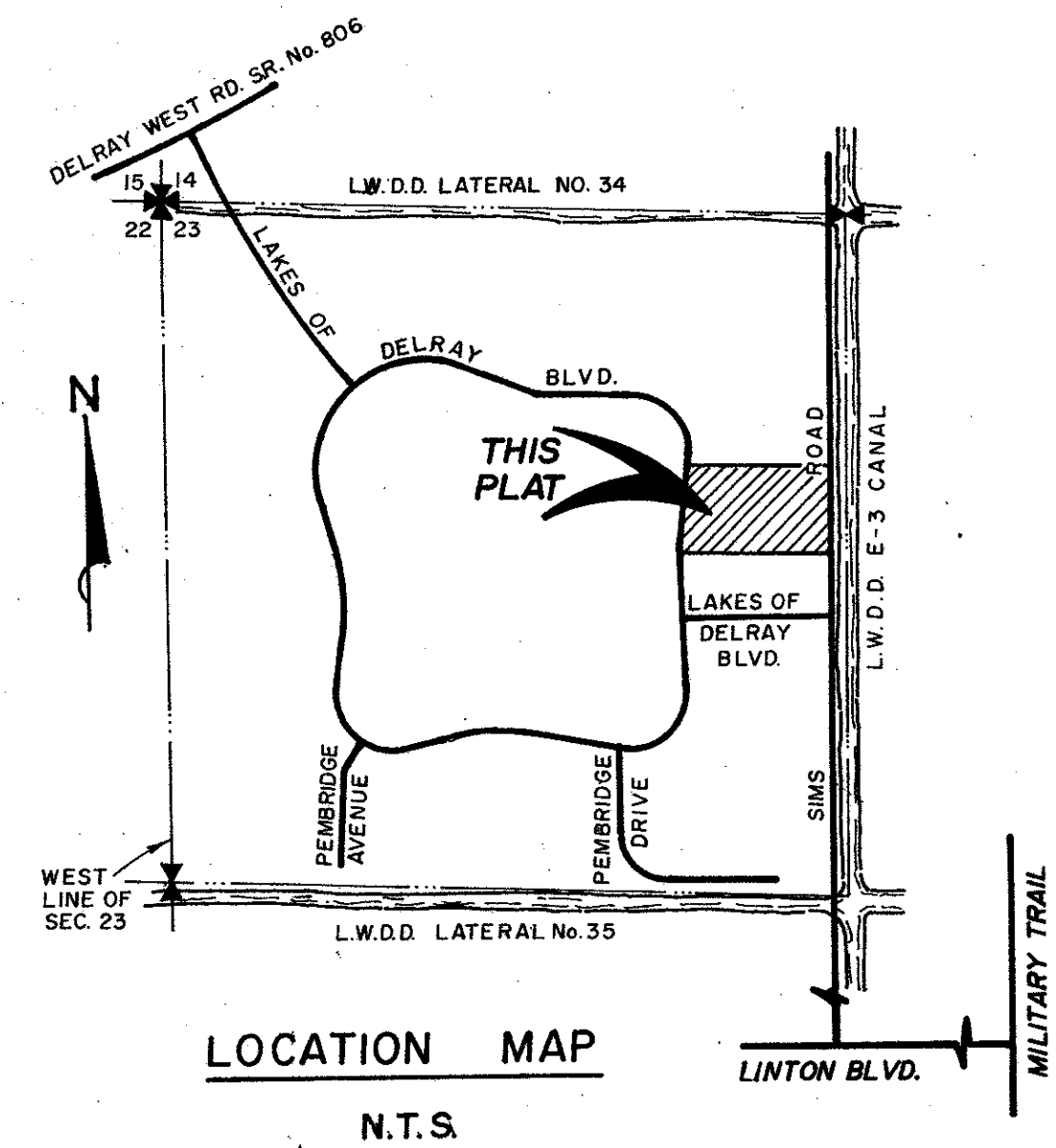


PLAT NO. VIII-A LAKES OF DELRAY

BEING A PORTION OF THE NORTHWEST ONE - QUARTER
OF SECTION 23, TOWNSHIP 46 SOUTH, RANGE 42 EAST
PALM BEACH COUNTY, FLORIDA.

THIS INSTRUMENT PREPARED BY
LARRY BIRMINGHAM OF
DANIEL CARNAHAN
CONSULTING ENGINEERS, INC.
6191 W. ATLANTIC BLVD. MARGATE, FLA. 33063
JUNE 1988 8706009-E S.W.

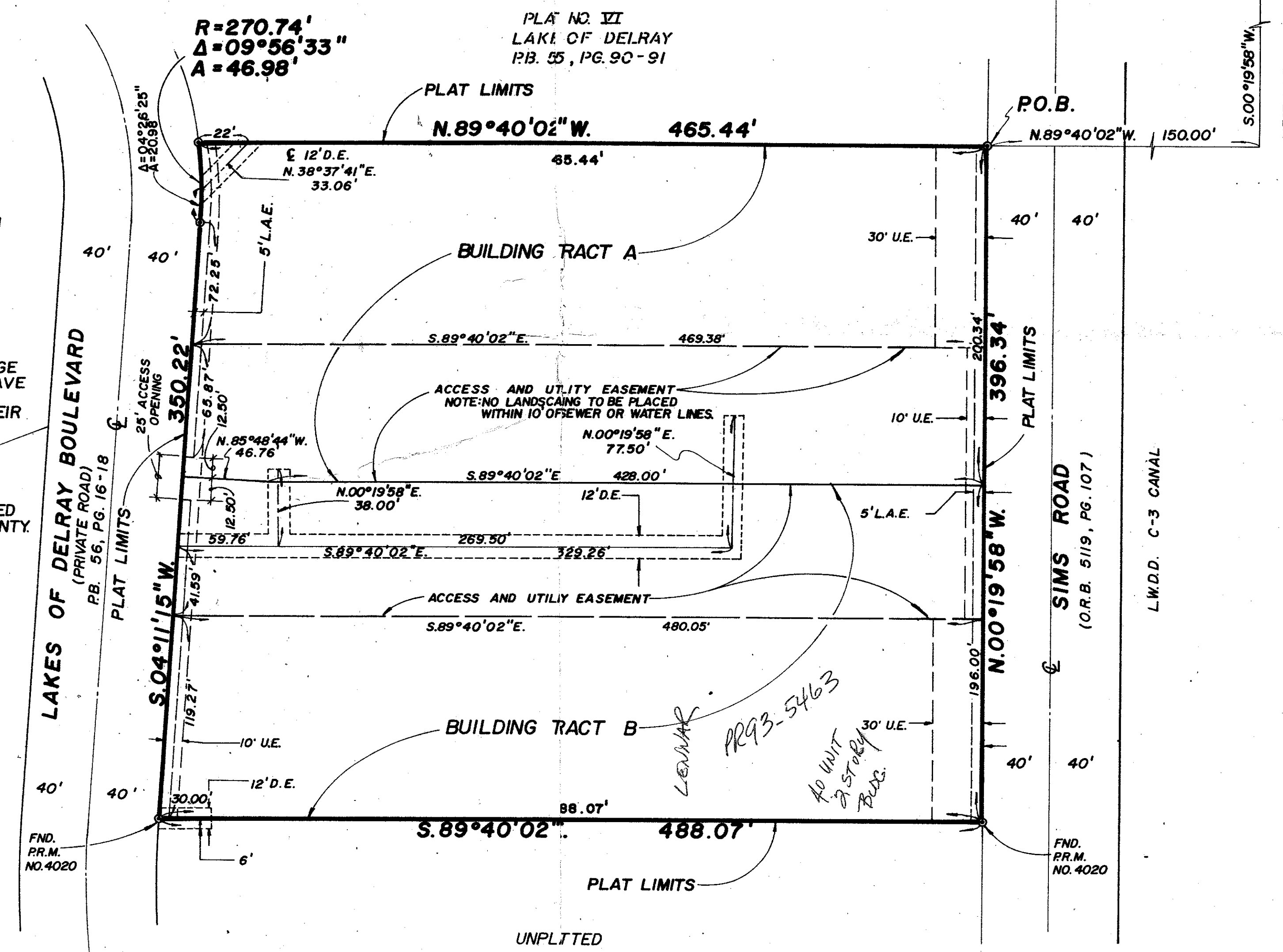
STATE OF FLORIDA }
COUNTY OF PALM BEACH } S.S.
THIS PLAT WAS FILED FOR
RECORD AT _____, THIS
DAY OF _____, 1988, A.D.,
AND DULY RECORDED IN PLAT BOOK
No. _____ ON PAGES
AND _____
JOHN B. DUNKLE, CLERK
BY: _____, D.C.



P.O.C.
N.W. CORNER
N.E. QUARTER,
SECTION 23

NOTES

1. ALL PRM.'s. (PERMANENT REFERENCE MONUMENT) BEAR THE REGISTRATION NUMBER 4020 SHOWN THUS. (C)
2. THE BEARINGS SHOWN HEREON ARE BASED ON A BEARING OF S.00°19'58"W. ON THE WEST LINE OF THE NORTHEAST QUARTER OF SECTION 23-46-42 PER THE PLAT OF LAKES OF DELRAY PLAT NO. SIX AS RECORDED IN PLAT BOOK 55, PAGES 90 AND 91 OF THE PUBLIC RECORDS OF PALM BEACH COUNTY, FLORIDA.
3. BUILDING SETBACK LINES SHALL BE AS REQUIRED BY PALM BEACH COUNTY ZONING REGULATIONS.
4. THERE SHALL BE NO BUILDINGS OR ANY KIND OF CONSTRUCTION PLACED ON UTILITY OR DRAINAGE EASEMENTS, CONSTRUCTION OR LANDSCAPING UPON MAINTENANCE OR MAINTENANCE ACCESS EASEMENTS MUST BE IN CONFORMANCE WITH ORDINANCES OF PALM BEACH COUNTY.
5. THERE SHALL BE NO TREES OR SHRUBS PLACED ON UTILITY EASEMENTS WHICH ARE PROVIDED FOR WATER AND SEWER USE OR UPON DRAINAGE EASEMENTS.
6. LANDSCAPING ON OTHER UTILITY EASEMENTS SHALL BE ALLOWED ONLY AFTER CONSENT OF ALL UTILITY COMPANIES OCCUPYING SAME.
7. IN THOSE CASES WHERE EASEMENTS OF DIFFERENT TYPES CROSS, DRAINAGE EASEMENTS SHALL HAVE FIRST PRIORITY, UTILITY EASEMENTS SHALL HAVE SECOND PRIORITY, ACCESS EASEMENTS SHALL HAVE THIRD PRIORITY, AND ALL OTHER EASEMENTS SHALL BE SUBORDINATE TO THESE WITH THEIR PRIORITIES BEING DETERMINED BY THE USE RIGHTS GRANTED.
8. D.E. INDICATES DRAINAGE EASEMENT
9. U.E. INDICATES UTILITY EASEMENT
10. L.A.E. INDICATES LIMITED ACCESS EASEMENT
11. ALL DRAINAGE EASEMENTS ARE 12' WIDE UNLESS OTHERWISE NOTED
12. NOTICE: THERE MAY BE ADDITIONAL RESTRICTIONS THAT ARE NOT RECORDED ON THIS PLAT, THAT MAY BE FOUND IN THE PUBLIC RECORDS OF THIS COUNTY.



Plat No VIII-A
SUBDIVISION * Lakes of Delray
BOOK 63 PAGE 198
FLOOD ZONE B FLOOD MAP #3308
QUAD # 37 ZONING RM
162470 ZIP CODE 33441
FUD NAME

UNPLATTED

UNPLATTED

0525-002

PL 85 170

PLAT No. VIII-A, LAKES OF DELRAY 63/198