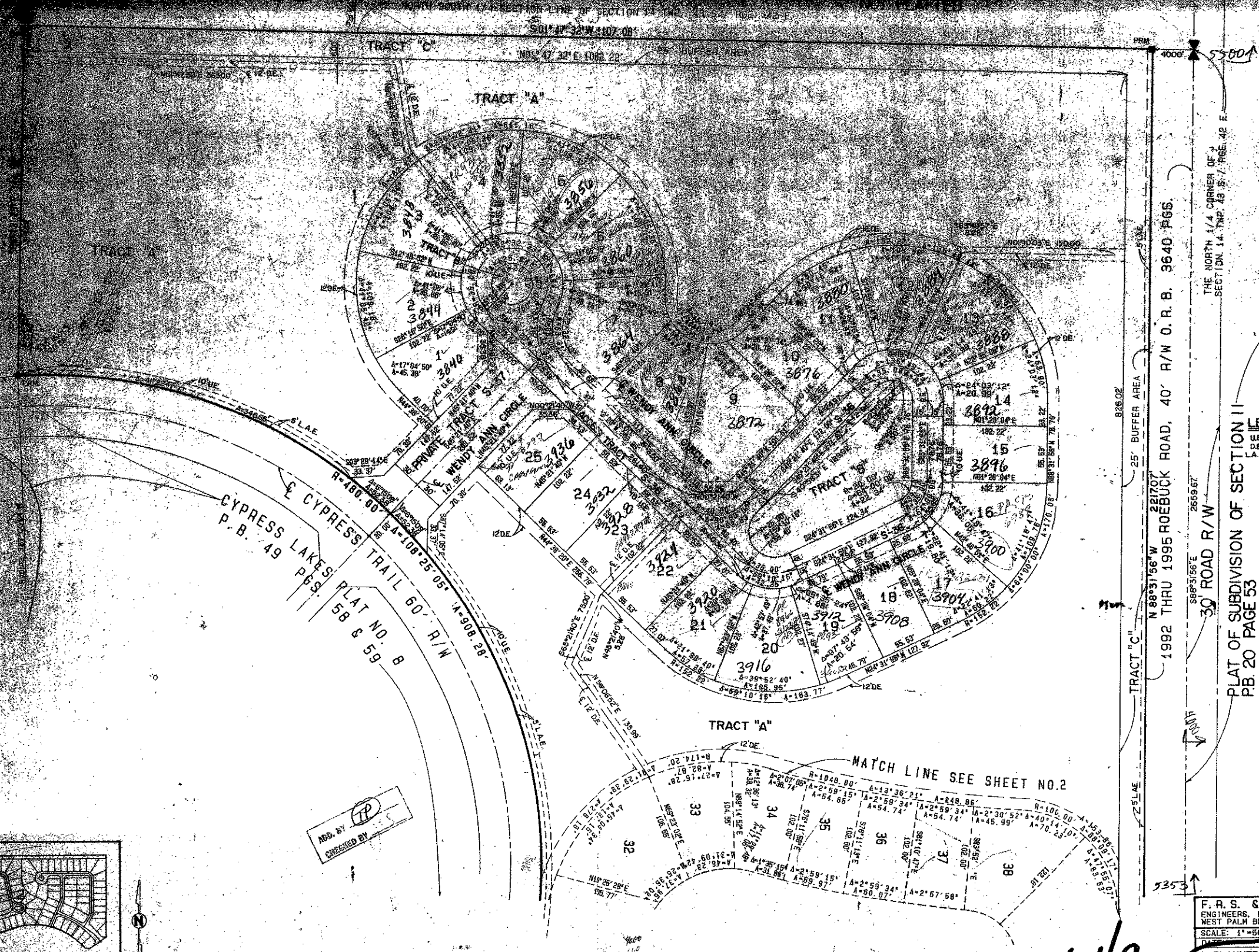


A PLANNED UNIT DEVELOPMENT
 SECTION 14, TOWNSHIP 43 SOUTH RANGE 42 EAST
 PALM BEACH COUNTY, FLORIDA
 IN 3 SHEETS SHEET NO. 3

ACREAGE 399

STATE OF FLORIDA
 COUNTY OF PALM BEACH
 This plat was filed for record
 this 1st day of
 1992 and duly recorded for
 on page
 JOHN B. DUNN, E.C.P., Surveyor
 BY _____



LEGEND:
 U.E. INDICATES UTILITY EASEMENT
 D.E. INDICATES DRAINAGE EASEMENT
 L.A.E. INDICATES LIMITED ACCESS EASEMENT

PLAT OF SUBDIVISION OF SECTION 14
 P.B. 20 PAGE 53

1992 THRU 1995 ROEBUCK ROAD, 40' R/W O.R.B. 3640 PGS.

5500'

30' ROAD R/W

5353'

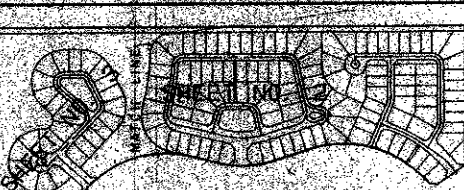
TRACT "C"

TRACT "B"

TRACT "A"

TRACT "C"

ADD. BY
 CHECKED BY



SHEETS KEY MAP

F. R. S. & ASSOCIATES
 ENGINEERS, LAND SURVEYORS, LAND PLANNERS
 WEST PALM BEACH, FLORIDA
 SCALE: 1" = 50'
 APPROVED BY: _____ PLOTTED BY: _____
 A PLANNED UNIT DEVELOPMENT
 IN CYPRESS LAKES, PLAT NO. 10
 Sheet 3 of 3 sheets

0234-002

64/9

Cypress Lakes Plat
 PAGE 9
 PLAT NO. 10
 SHEETS 1, 2, 3
 77-46
 102174