

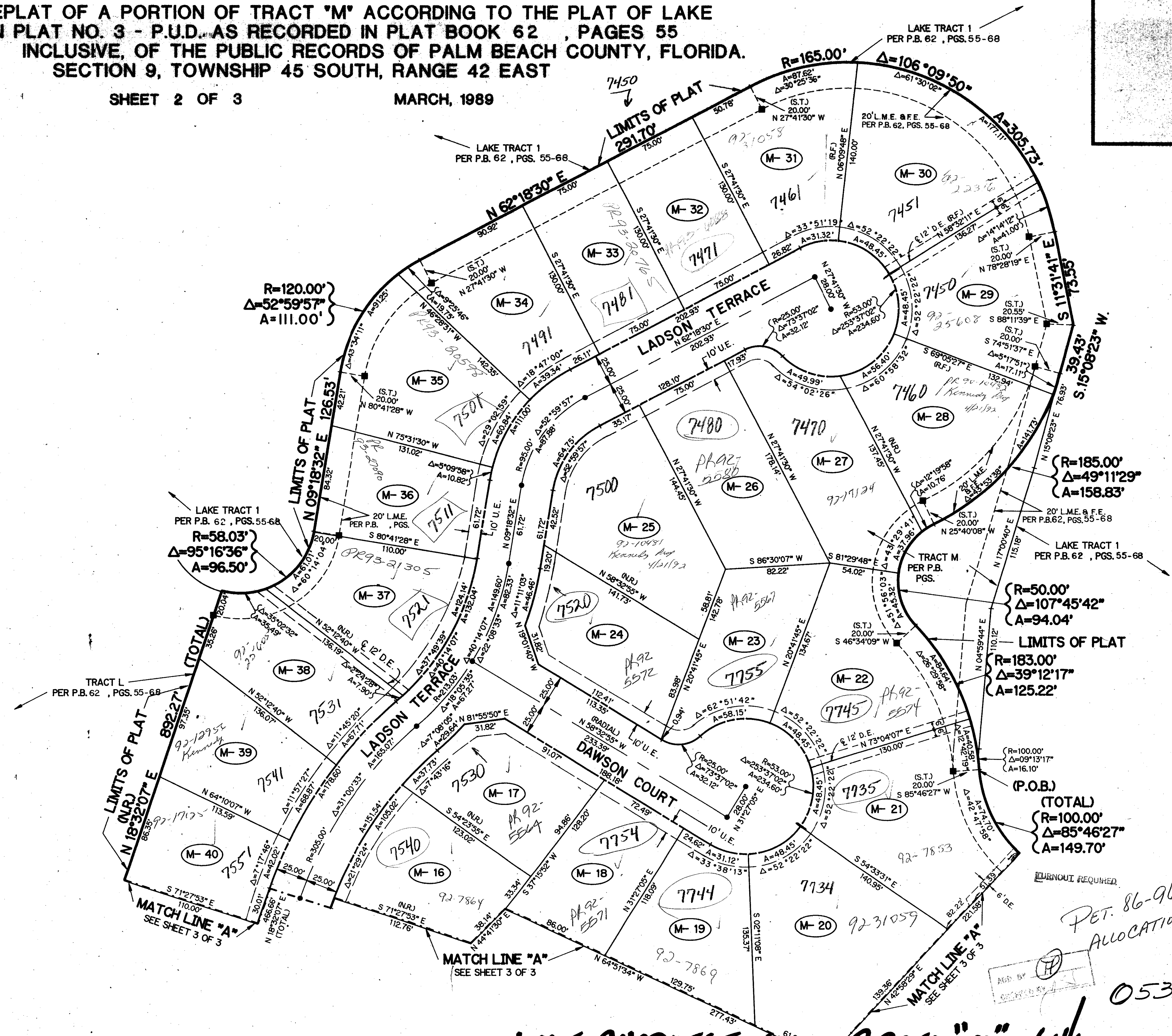
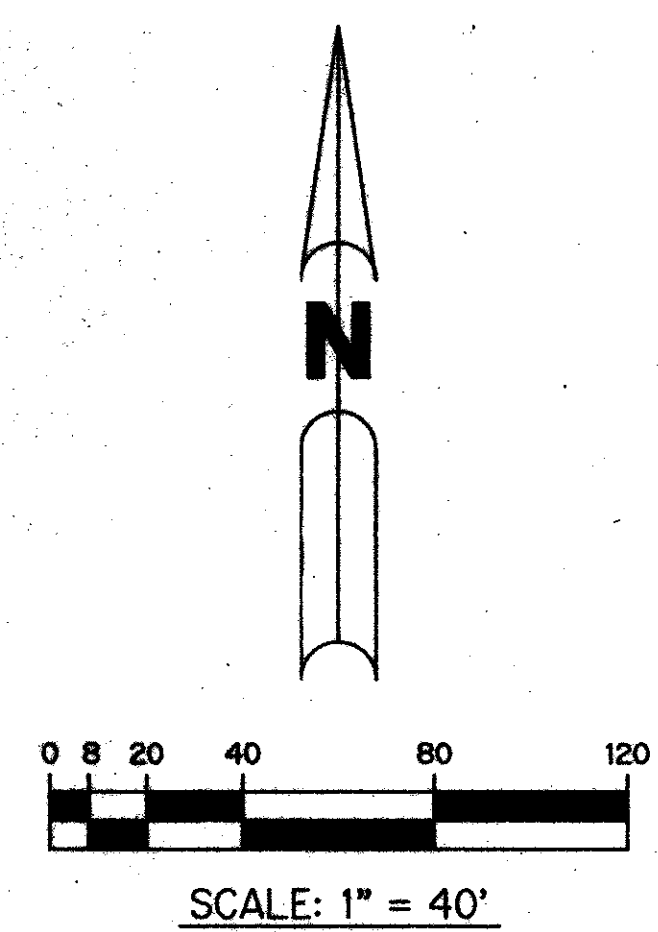
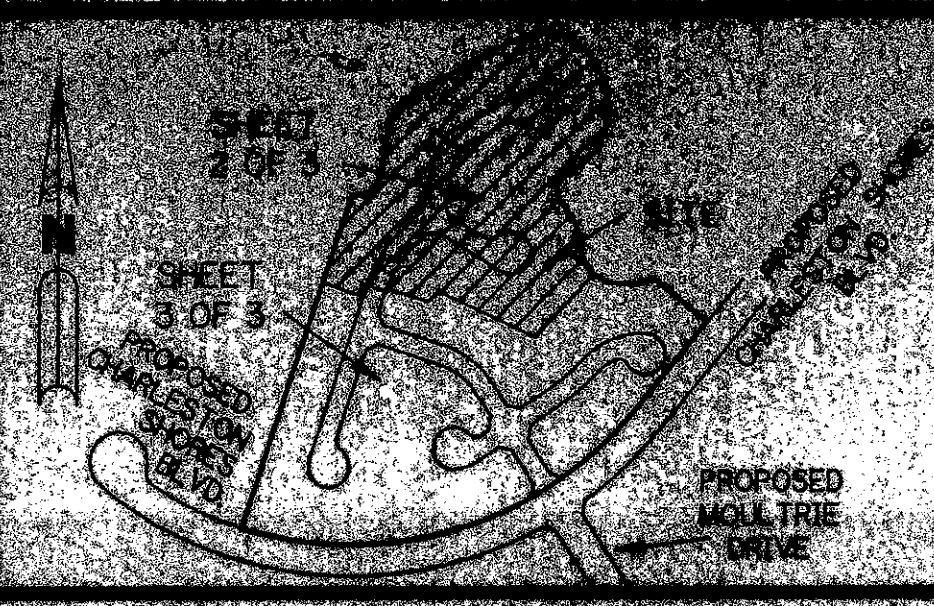
A PART OF LAKE CHARLESTON PLANNED UNIT DEVELOPMENT

LAKE CHARLESTON PARCEL "M"

BEING A REPLAT OF A PORTION OF TRACT "M" ACCORDING TO THE PLAT OF LAKE CHARLESTON PLAT NO. 3 - P.U.D. AS RECORDED IN PLAT BOOK 62 , PAGES 55 THROUGH 68 INCLUSIVE, OF THE PUBLIC RECORDS OF PALM BEACH COUNTY, FLORIDA.
SECTION 9, TOWNSHIP 45 SOUTH, RANGE 42 EAST

SHEET 2 OF 3

MARCH, 1989



THIS INSTRUMENT PREPARED BY
PERRY C. WHITE P.L.S. 4213 STATE OF FLORIDA
LAWSON, NOBLE AND ASSOCIATES, INC.
ENGINEERS PLANNERS SURVEYORS
WEST PALM BEACH, FLORIDA

Division - Lake Charleston Parcel "M"
PLANNED UNIT DEVELOPMENT # 105A
ZONING - R-10
SUBDIVISION - Lake Charleston PUD
APR 1989
787439

PET. 86-96
ALLOCATION #000
0533-004