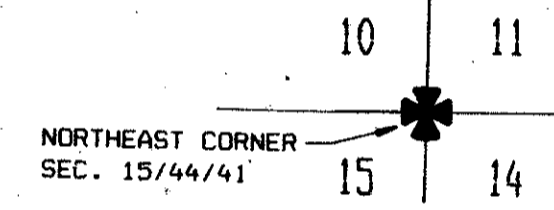
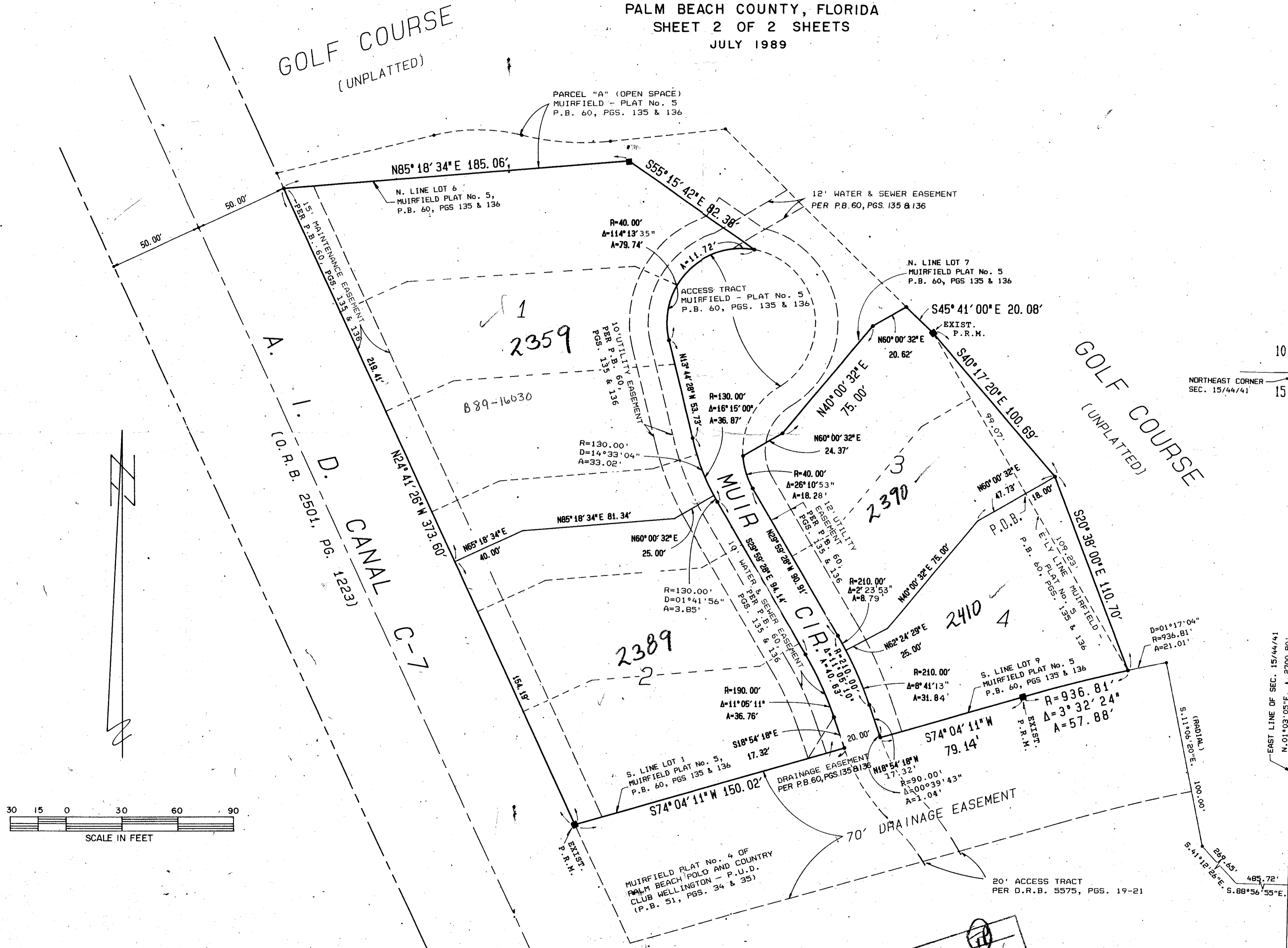


REPLAT OF LOTS 1 THROUGH 9 - MUIRFIELD - PLAT NO. 5 OF PALM BEACH POLO AND COUNTRY CLUB WELLINGTON - P.U.D.

BEING IN PART A REPLAT OF A PORTION OF MUIRFIELD - PLAT NO. 5
AS RECORDED IN PLAT BOOK 60, PAGES 135 AND 136 OF THE PUBLIC RECORDS
OF PALM BEACH COUNTY, FLORIDA
TOGETHER WITH A PART OF SECTION 15, TOWNSHIP 44 SOUTH, RANGE 41 EAST
PALM BEACH COUNTY, FLORIDA
SHEET 2 OF 2 SHEETS
JULY 1989

0332-085

66



SURVEYOR'S NOTES

- DENOTES PERMANENT REFERENCE MONUMENT
- ALL BEARINGS SHOWN HEREON ARE RELATIVE TO AN ASSUMED MERIDIAN USED THROUGHOUT WELLINGTON - P. U. D. THE EAST LINE OF SECTION 15-44-41 IS ASSUMED TO BEAR NORTH 01° 03' 05" EAST.
- BUILDING SETBACK LINES SHALL BE AS REQUIRED BY PALM BEACH COUNTY ZONING REGULATIONS.
- NO BUILDINGS, NOR ANY KIND OF CONSTRUCTION, SHALL BE PLACED ON UTILITY, DRAINAGE, WATER, OR SEWER EASEMENTS.
- NO STRUCTURES, TREES OR SHRUBS SHALL BE PLACED IN THE DRAINAGE, MAINTENANCE, OR UTILITY EASEMENTS FOR WATER OR SEWER.
- APPROVAL OF LANDSCAPING ON UTILITY EASEMENTS OTHER THAN WATER AND SEWER SHALL BE ONLY WITH THE APPROVAL OF ALL UTILITIES OCCUPYING SAME.
- WHERE DRAINAGE, UTILITY, WATER, OR SEWER EASEMENTS CROSS, DRAINAGE EASEMENTS SHALL TAKE PRECEDENCE.
- ACME IMPROVEMENT DISTRICT SHALL HAVE THE RIGHT TO CONSTRUCT AND MAINTAIN WATER AND SEWER FACILITIES WITHIN UTILITY EASEMENTS, AND ACCESS TRACTS AS SHOWN HEREON.
- THERE MAY BE ADDITIONAL RESTRICTIONS THAT ARE NOT RECORDED ON THIS PLAT THAT MAY BE FOUND IN THE PUBLIC RECORDS OF PALM BEACH COUNTY, FLORIDA.

SUBDIVISION: Muirfield Plat No. 5
 BOOK: 60 PAGE: 66
 FLOOD ZONE: B
 ZONING: AP
 QUID: 62
 SR: 86-32
 ZIP CODE: 33414
 ADD NAME: Same 1514514

PET. 86-32
 COLLECT UNDER PETITION
 0332-085
 64/66

ADD. BY: [Signature]
 CHECKED BY: [Signature]

SCALE: 1"=30'	MICK MILLER, INC. Land Surveying Development Consultants	DRAWN BY: [Signature]
DATE: JULY 1989		
REPLAT OF LOTS 1 THROUGH 9 - MUIRFIELD PLAT NO. 5 OF PALM BEACH POLO AND COUNTRY CLUB WELLINGTON - P. U. D.		
2560 R.C.A. Blvd., Suite 105 Palm Beach Gardens, Florida 33410 (407) 627-5200		DRAWING NUMBER 89055