

BRIDLE PATH OF PALM BEACH POLO AND COUNTRY CLUB WELLINGTON - P.U.D.

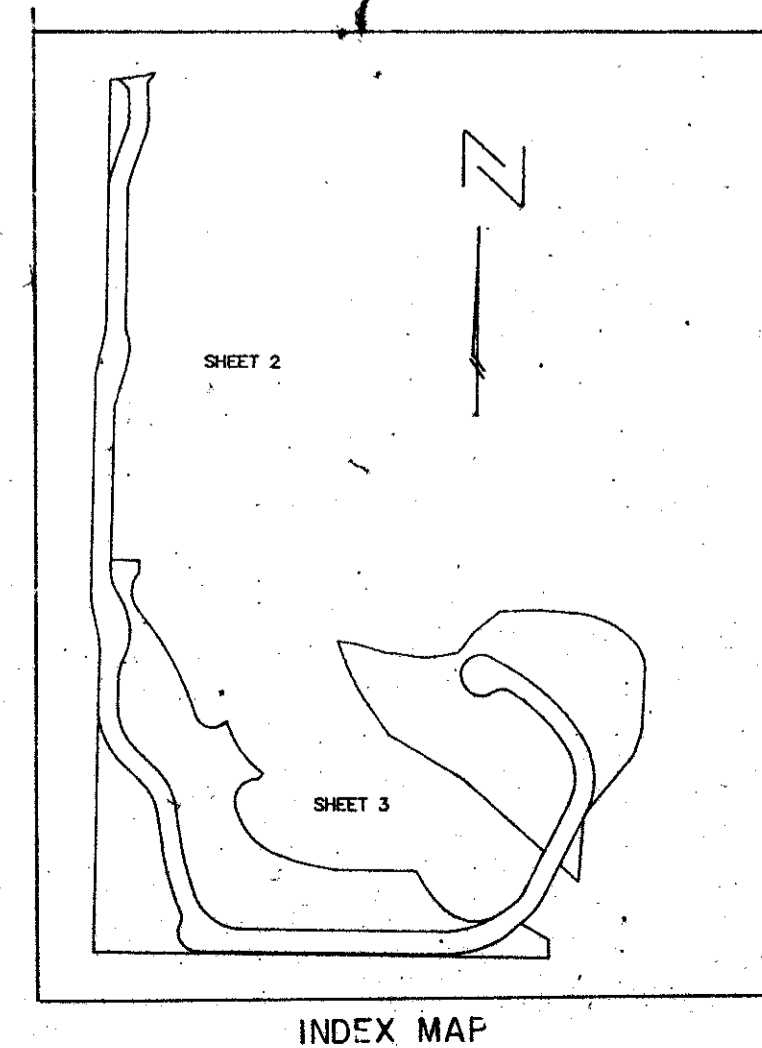
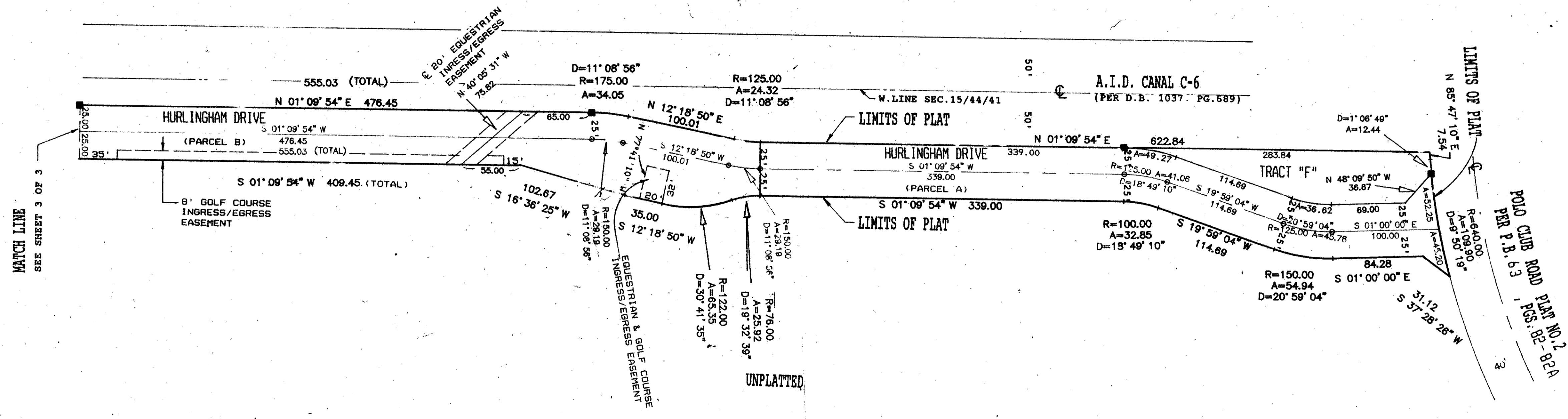
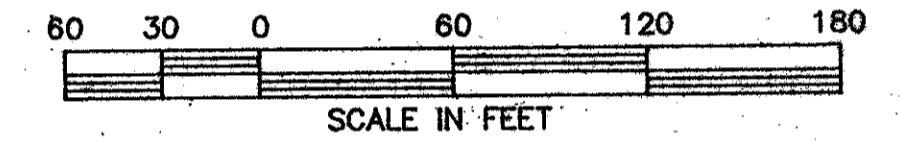
IN PART OF SECTION 15, TOWNSHIP 44 SOUTH, RANGE 41 EAST
PALM BEACH COUNTY, FLORIDA
SHEET 2 OF 3 SHEETS
JULY 1989

CONCAVE TO THE WEST WITH A RADIUS OF 122.0 FEET; THENCE SOUTHERLY AND SOUTHWESTERLY ALONG THE ARC OF SAID CURVE, THROUGH A CENTRAL ANGLE OF 30°41'35", A DISTANCE OF 65.35 FEET TO THE POINT OF TANGENCY; THENCE SOUTH 12°18'50" WEST, A DISTANCE OF 35.0 FEET; THENCE SOUTH 16°36'25" WEST, A DISTANCE OF 102.67 FEET; THENCE SOUTH 01°09'54" WEST ALONG A LINE 25.0 FEET EAST OF AND PARALLEL WITH SAID EAST RIGHT OF WAY LINE, A DISTANCE OF 409.45 FEET; THENCE SOUTH 88°50'06" EAST, A DISTANCE OF 72.49 FEET; THENCE SOUTH 1°09'54" WEST, A DISTANCE OF 32.82 FEET TO THE NON-RADIAL INTERSECTION WITH A CURVE CONCAVE TO THE EAST WITH A RADIUS OF 71.30 FEET AND A TANGENT BEARING OF SOUTH 41°35'17" WEST AT SAID INTERSECTION; THENCE SOUTHWESTERLY ALONG THE ARC OF SAID CURVE THROUGH A CENTRAL ANGLE OF 80°40'59", A DISTANCE OF 100.40 FEET TO THE POINT OF REVERSE CURVATURE OF A CURVE CONCAVE TO THE SOUTHWEST WITH A RADIUS OF 849.88 FEET; THENCE SOUTHEASTERLY ALONG THE ARC OF SAID CURVE THROUGH A CENTRAL ANGLE OF 20°56'21", A DISTANCE OF 310.59 FEET TO THE POINT OF REVERSE CURVATURE OF A CURVE CONCAVE TO THE NORTHEAST WITH A RADIUS OF 45.0 FEET; THENCE SOUTHEASTERLY ALONG THE ARC OF SAID CURVE THROUGH A CENTRAL ANGLE OF 98°54'39", A DISTANCE OF 79.41 FEET TO THE POINT OF TANGENCY; THENCE NORTH 62°56'00" EAST, A DISTANCE OF 20.07 FEET TO THE NON-RADIAL INTERSECTION WITH A CURVE CONCAVE TO THE EAST WITH A RADIUS OF 232.28 FEET AND A TANGENT BEARING OF NORTH 15°30'40" WEST AT SAID INTERSECTION; THENCE SOUTHEASTERLY ALONG THE ARC OF SAID CURVE THROUGH A CENTRAL ANGLE OF 39°39'29", A DISTANCE OF 160.77 FEET TO THE END OF SAID CURVE; THENCE SOUTH 34°49'57" WEST ALONG A RADIAL LINE, A DISTANCE OF 17.04 FEET TO THE NON-RADIAL INTERSECTION WITH A CURVE CONCAVE TO THE SOUTHEAST WITH A RADIUS OF 57.50 FEET AND A TANGENT BEARING OF SOUTH 85°38'47" EAST AT SAID INTERSECTION; THENCE WESTERLY AND SOUTHWESTERLY ALONG THE ARC OF SAID CURVE, THROUGH A CENTRAL ANGLE OF 107°35'03", A DISTANCE OF 107.97 FEET TO THE POINT OF COMPOUND CURVATURE OF A CURVE CONCAVE TO THE NORTHEAST WITH A RADIUS OF 178.50 FEET; THENCE SOUTHEASTERLY ALONG THE ARC OF SAID CURVE THROUGH A CENTRAL ANGLE OF 57°30'42", A DISTANCE OF 179.17 FEET TO THE POINT OF TANGENCY; THENCE

SOUTH 70°44'32" EAST, A DISTANCE OF 50.00 FEET; THENCE SOUTH 78°40'05" EAST, A DISTANCE OF 98.70 FEET; THENCE SOUTH 89°37'48" EAST, A DISTANCE OF 210.17 FEET TO THE NON-RADIAL INTERSECTION WITH A CURVE CONCAVE TO THE NORTHEAST WITH A RADIUS OF 301.34 FEET AND A TANGENT BEARING OF NORTH 24°30'51" WEST AT SAID INTERSECTION; THENCE SOUTHEASTERLY ALONG THE ARC OF SAID CURVE THROUGH A CENTRAL ANGLE OF 23°44'54", A DISTANCE OF 124.90 FEET TO THE POINT OF COMPOUND CURVATURE OF A CURVE CONCAVE TO THE NORTH WITH A RADIUS OF 115.0 FEET; THENCE NORTHEASTERLY ALONG THE ARC OF SAID CURVE THROUGH A CENTRAL ANGLE OF 76°12'02", A DISTANCE OF 152.94 FEET TO THE POINT OF TANGENCY; THENCE NORTH 55°32'13" EAST A DISTANCE OF 32.15 FEET TO A POINT OF CURVATURE OF A CURVE CONCAVE TO THE NORTHWEST, WITH A RADIUS OF 116.21 FEET; THENCE NORTHEASTERLY ALONG THE ARC OF SAID CURVE THROUGH A CENTRAL ANGLE OF 28°26'48", A DISTANCE OF 57.70 FEET TO THE POINT OF TANGENCY; THENCE NORTH 27°05'25" EAST, A DISTANCE OF 112.92 FEET; THENCE NORTH 48°28'41" WEST, A DISTANCE OF 258.32 FEET TO THE POINT OF CURVATURE OF A CURVE CONCAVE TO THE SOUTHWEST WITH A RADIUS OF 200.0 FEET; THENCE NORTHWESTERLY ALONG THE ARC OF SAID CURVE THROUGH A CENTRAL ANGLE OF 11°37'28", A DISTANCE OF 40.58 FEET TO THE POINT OF TANGENCY; THENCE NORTH 40°06'09" WEST, A DISTANCE OF 201.15 FEET; THENCE NORTH 35°01'47" WEST, A DISTANCE OF 93.98 FEET TO THE POINT OF CURVATURE OF A CURVE CONCAVE TO THE NORTHEAST WITH A RADIUS OF 543.33 FEET; THENCE NORTHWESTERLY ALONG THE ARC OF SAID CURVE THROUGH A CENTRAL ANGLE OF 19°07'57", A DISTANCE OF 181.43 FEET TO THE END OF SAID CURVE; THENCE SOUTH 82°16'09" EAST, A DISTANCE OF 51.64 FEET; THENCE SOUTH 73°25'27" EAST, A DISTANCE OF 79.97 FEET; THENCE SOUTH 83°56'16" EAST, A DISTANCE OF 105.89 FEET; THENCE NORTH 79°53'41" EAST, A DISTANCE OF 78.86 FEET; THENCE NORTH 36°58'44" EAST, A DISTANCE OF 70.99 FEET; THENCE NORTH 50°53'48" EAST, A DISTANCE OF 85.29 FEET; THENCE NORTH 87°57'34" EAST, A DISTANCE OF 103.07 FEET; THENCE SOUTH 85°19'26" EAST, A DISTANCE OF 95.20 FEET TO THE POINT OF CURVATURE OF A CURVE CONCAVE TO THE

SOUTHWEST WITH A RADIUS OF 225.04 FEET; THENCE SOUTHEASTERLY ALONG THE ARC OF SAID CURVE THROUGH A CENTRAL ANGLE OF 45°21'12", A DISTANCE OF 178.13 FEET TO THE POINT OF COMPOUND CURVATURE OF A CURVE CONCAVE TO THE SOUTHWEST WITH A RADIUS OF 94.0 FEET; THENCE SOUTHEASTERLY ALONG THE ARC OF SAID CURVE THROUGH A CENTRAL ANGLE OF 42°53'57", A DISTANCE OF 70.38 FEET TO THE POINT OF TANGENCY; THENCE SOUTH 8°59'43" WEST, A DISTANCE OF 147.93 FEET TO THE POINT OF CURVATURE OF A CURVE CONCAVE TO THE WEST WITH A RADIUS OF 94.0 FEET; THENCE SOUTHERLY ALONG THE ARC OF SAID CURVE THROUGH A CENTRAL ANGLE OF 16°24'11", A DISTANCE OF 26.91 FEET TO THE POINT OF TANGENCY; THENCE SOUTH 19°19'54" WEST, A DISTANCE OF 31.75 FEET TO THE POINT OF CURVATURE OF A CURVE CONCAVE TO THE NORTHWEST WITH A RADIUS OF 94.0 FEET; THENCE SOUTHWESTERLY ALONG THE ARC OF SAID CURVE THROUGH A CENTRAL ANGLE OF 80°55'52", A DISTANCE OF 34.34 FEET TO THE POINT OF TANGENCY; THENCE SOUTH 40°15'46" WEST, A DISTANCE OF 172.60 FEET; THENCE SOUTH 27°05'25" WEST, A DISTANCE OF 18.66 FEET; THENCE SOUTH 04°41'25" WEST, A DISTANCE OF 165.53 FEET; THENCE NORTH 48°28'41" WEST, A DISTANCE OF 65.14 FEET; THENCE SOUTH 27°05'25" WEST, A DISTANCE OF 100.06 FEET TO THE POINT OF CURVATURE OF A CURVE CONCAVE TO THE NORTHWEST WITH A RADIUS OF 166.21 FEET; THENCE SOUTHWESTERLY ALONG THE ARC OF SAID CURVE THROUGH A CENTRAL ANGLE OF 28°26'48", A DISTANCE OF 82.52 FEET TO THE POINT OF TANGENCY; THENCE SOUTH 59°18'57" EAST, A DISTANCE OF 81.38 FEET; THENCE SOUTH 00°28'12" WEST, A DISTANCE OF 47.0 FEET; THENCE NORTH 89°37'48" WEST, ALONG SAID NORTH RIGHT OF WAY LINE OF THE ACME IMPROVEMENT DISTRICT CANAL C-23, A DISTANCE OF 1175.56 FEET TO THE POINT OF BEGINNING.

CONTAINING: 18.83 ACRES, MORE OR LESS.



BRIDLE PATH OF PALM BEACH POLO AND COUNTRY CLUB
SECTION # 04
BOOK 04
PAGE 89
FLOOD ZONE B
EASEMENTS AR
CHAD # 62
ZIP CODE 33414
TAZ 720
15144 Wellington - P.U.D.

PET. 86-32
0332-083
04/89

SCALE: 1"=60'	NICK MILLER, INC. Land Surveying	DRAWN BY:
DATE: JULY 1989	Planning & Development Consultants	CHK
BRIDLE PATH OF PALM BEACH POLO AND COUNTRY CLUB WELLINGTON - P.U.D.		
2300 West Blvd., Suite 102 Palm Beach Gardens, Florida 33410 (407) 627-5200		DRAWING NUMBER 89045