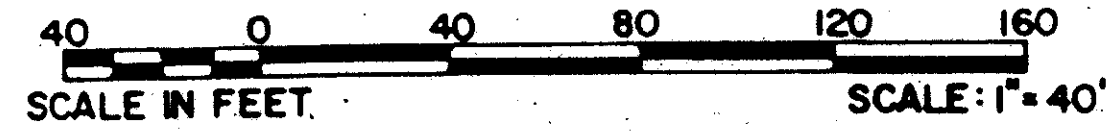


# LAKEFIELD OF THE LANDINGS AT WELLINGTON P.U.D. - PLAT 2A

IN PART OF SECTION 7 AND 18, TOWNSHIP 44 SOUTH, RANGE 41 EAST

PALM BEACH COUNTY, FLORIDA  
IN NINE SHEETS SHEET NO. 5

GEE & JENSON  
ENGINEERS - ARCHITECTS - PLANNERS, INC.  
WEST PALM BEACH, FLORIDA  
AUGUST 1989



0261-006

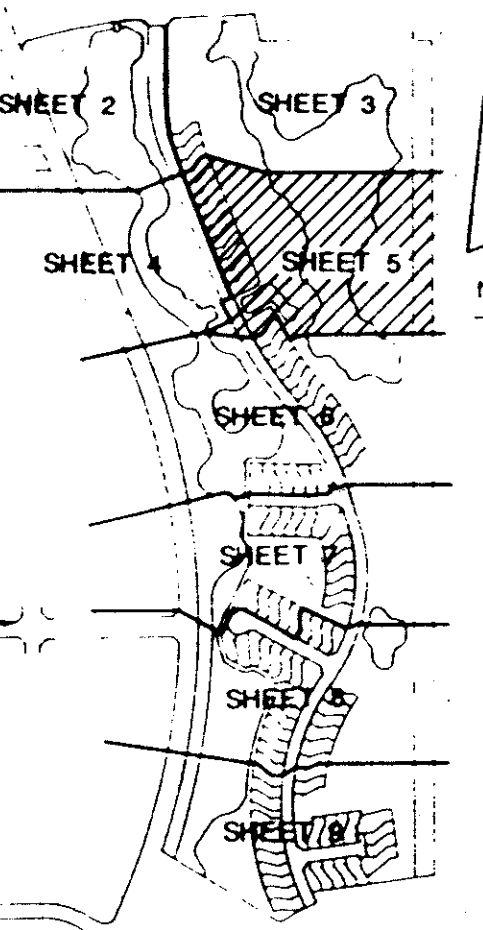
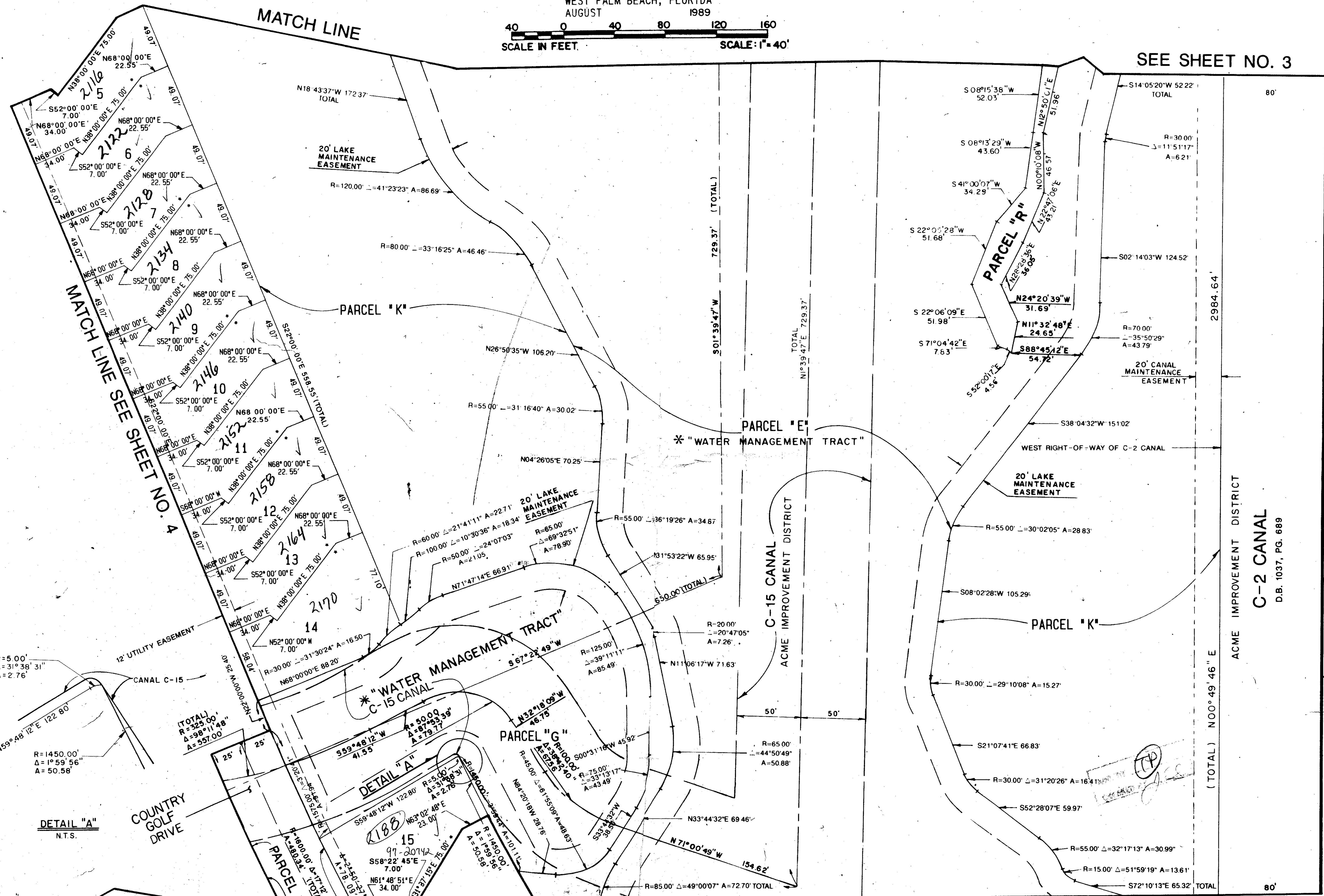
101

STATE OF FLORIDA  
COUNTY OF PALM BEACH  
This plat was filed for  
record at \_\_\_\_\_ M. This \_\_\_\_\_ day  
of \_\_\_\_\_ 1989, and duly  
recorded in Plat Book No. \_\_\_\_\_  
on Pages \_\_\_\_\_ thru \_\_\_\_\_

JOHN B. DUNKLE  
Clerk Circuit Court,  
By: \_\_\_\_\_ D.C.



SEE SHEET NO. 3



KEY MAP  
PLAT LIMITS

SADDLE TRAIL PARK  
OF WELLINGTON PUD  
PB. 41, PG. 103-105  
Inclusive

ACME IMPROVEMENT DISTRICT  
C-2 CANAL  
D.B. 1037, PG. 689

TAB 72B

Lakefield of the Landings  
SUBDIVISION # at Wellington  
BOOK 04 PAGE 101  
FLOOR PLAN B  
DATE 7-77  
BY R.E.  
01-78-287  
7/11/44H

COMPUTED D.W.L.K.A.P.  
DRAWN D.W.L.K.A.P.  
CHECKED W.J.J.  
APPROVED J.H.D.

NOTE: ALL LINES ARE RADIAL UNLESS OTHERWISE NOTED !

\* = INDICATES ZERO LOT LINE

LAKEFIELD OF THE LANDINGS AT WELLINGTON P.U.D. - PLAT 2A

\* WATER MANAGEMENT TRACTS ARE THE PERPETUAL MAINTENANCE OBLIGATION OF THE LAKEFIELD HOMEOWNERS ASSOCIATION, INC.

RET. 78-287

0269-008

64/101