

LAKEFIELD OF THE LANDINGS AT WELLINGTON P.U.D. - PLAT 2A

IN PART OF SECTION 7 AND 18, TOWNSHIP 44 SOUTH, RANGE 41 EAST

PALM BEACH COUNTY, FLORIDA

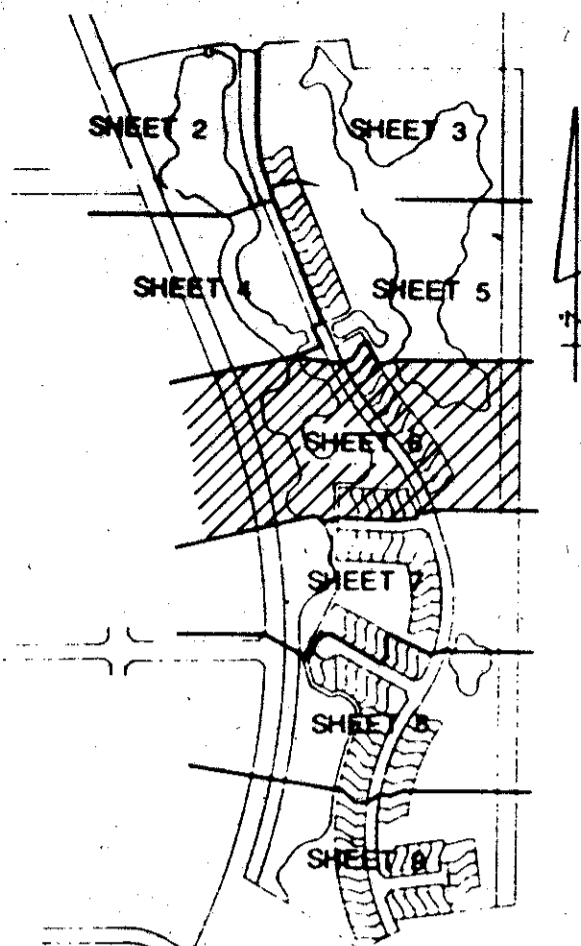
IN NINE SHEETS SHEET NO. 6

GEE & JENSON
ENGINEERS - ARCHITECTS - PLANNERS, INC.
WEST PALM BEACH, FLORIDA
AUGUST 1989

SCALE IN FEET SCALE: 1" = 40'

0269-008

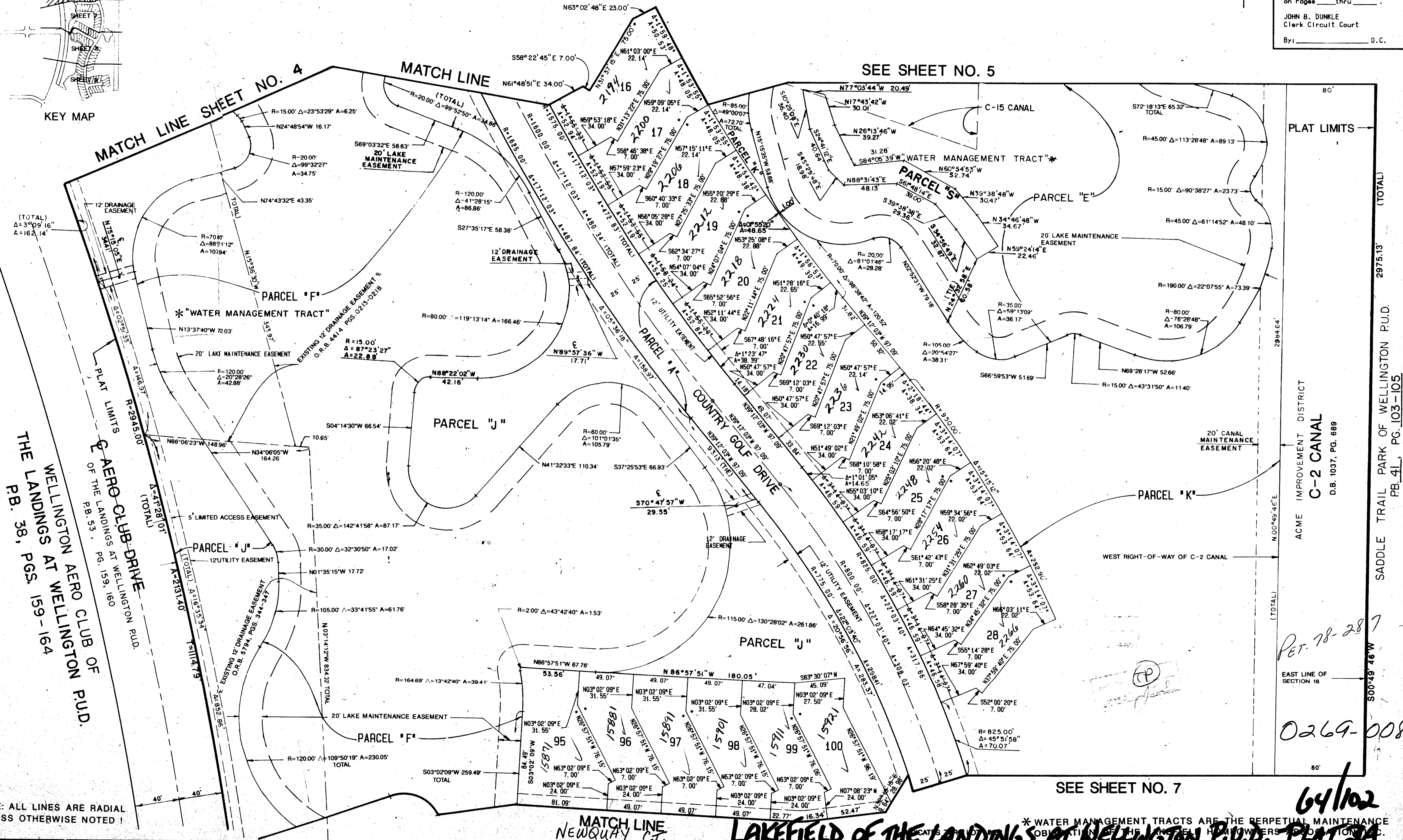
102



KEY MAP

STATE OF FLORIDA
COUNTY OF PALM BEACH
This plat was filed for
record at _____ M. this _____ day
of _____ 1989, and duly
recorded in Plat Book No. _____
on Pages _____ thru _____.

JOHN B. DUNKLE
Clerk Circuit Court
By: _____ D.C.



SUBDIVISION: Lakefield of the Landings at Wellington P.U.D.
 BOOK: 64 PAGE: 102
 FILED: 77
 CR: 78-287
 END NAME: Wellington P.U.D.
 DATE: 11/11/89

COMPUTED: DWL/KAD
 DRAWN: DWL/KAD
 CHECKED: W.S.J.
 APPROVED: JLD

NOTE: ALL LINES ARE RADIAL UNLESS OTHERWISE NOTED!

SEE SHEET NO. 7

* WATER MANAGEMENT TRACTS ARE THE PERPETUAL MAINTENANCE OBLIGATION OF THE HOMEOWNERS ASSOCIATION.

RET. 78-287

0269-008

64/102

LAKEFIELD OF THE LANDINGS AT WELLINGTON P.U.D. - PLAT 2A