

SAN MICHEL OF THE POLO CLUB

A PART OF THE POLO CLUB P. O. D.

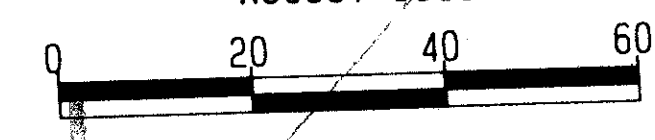
BEING A REPLAT OF A PORTION OF TRACT I, "THE POLO CLUB PLAT 111" (P.B. 59, PGS. 110-112)
AND PART OF SECTION 27, TOWNSHIP 46 SOUTH, RANGE 42 EAST
PALM BEACH COUNTY, FLORIDA

STATE OF FLORIDA
COUNTY OF PALM BEACH
This plat was filed for
record at _____ M., this _____ day
of _____ 198____ and duly
recorded in Plat Book no. _____
on Pages _____ through _____
JOHN B. DUNKLE
Clerk Circuit Court
By: _____ D. C.

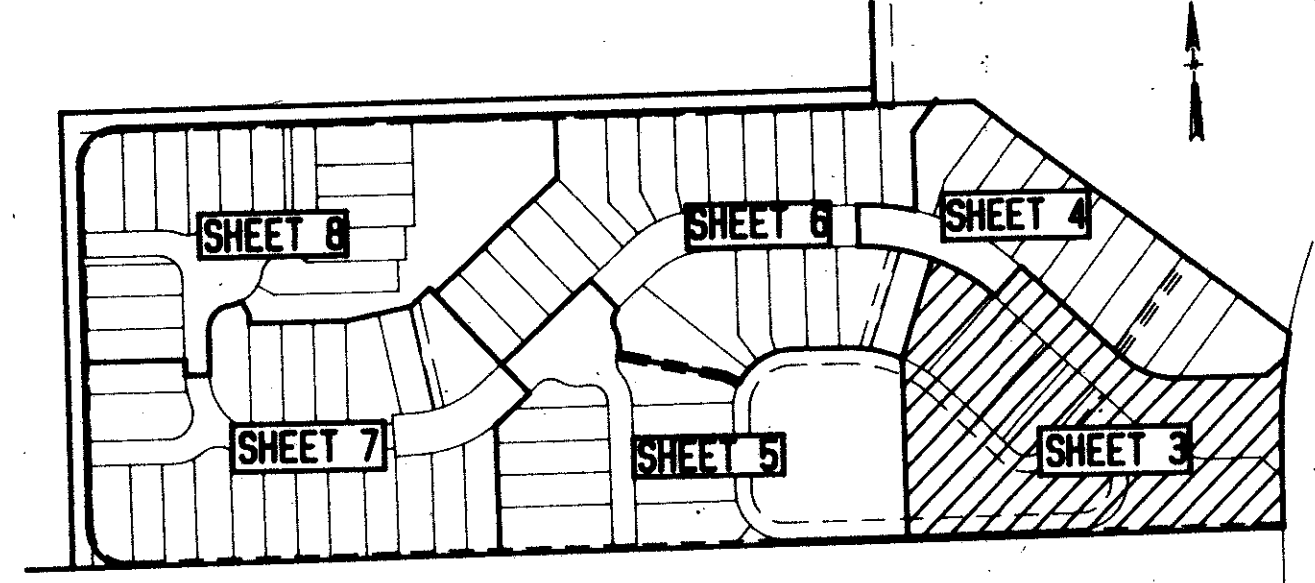
SHEET 3 OF 8

IN 8 SHEETS

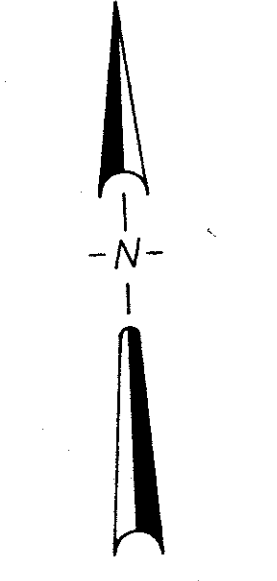
LANGAN ENGINEERING ASSOCIATES, INC.
WEST PALM BEACH, FLORIDA
AUGUST 1989



ADD. BY _____
CHECKED BY _____



KEY MAP



SCALE 1" = 20'

SUBDIVISION: San Michel of the Polo Club
PAGE: 126
BOOK: 64
FLOOD MAP: #2154
ZONING: RS
QUAD: 37
ZIP CODE: 33444
LE: 84-71
PUD NAME: San Michel of the Polo Club
TAX: 477

MATCH SHEET 5

TRACT D-1
WATER MANAGEMENT TRACT
TO BE MAINTAINED BY
THE POLO CLUB OF BOCA RATON
PROPERTY OWNERS ASSOCIATION, INC.

TRACT L-2
20' LAKE MAINTENANCE
EASEMENT

LAKE WORTH DRAINAGE DISTRICT CANAL L-38
(ORB. 4299, PG. 552, ORB. 5290, PG. 1264)

TRACT C-2

TRACT R-1
"FOR PRIVATE ROAD PURPOSES"

TRACT L-1

TRACT II
TRADITIONS
P.B. 59, PG. 110 - 112

BOULEVARD

Ret. 84-71
0436-033

64/126

SAN MICHEL OF THE POLO CLUB

COMPUTED: MAY/89
DRAWN: GJK
CHECKED: HBP
COMMENTS: JUL/89
APPROVED: _____
REVISION: _____

