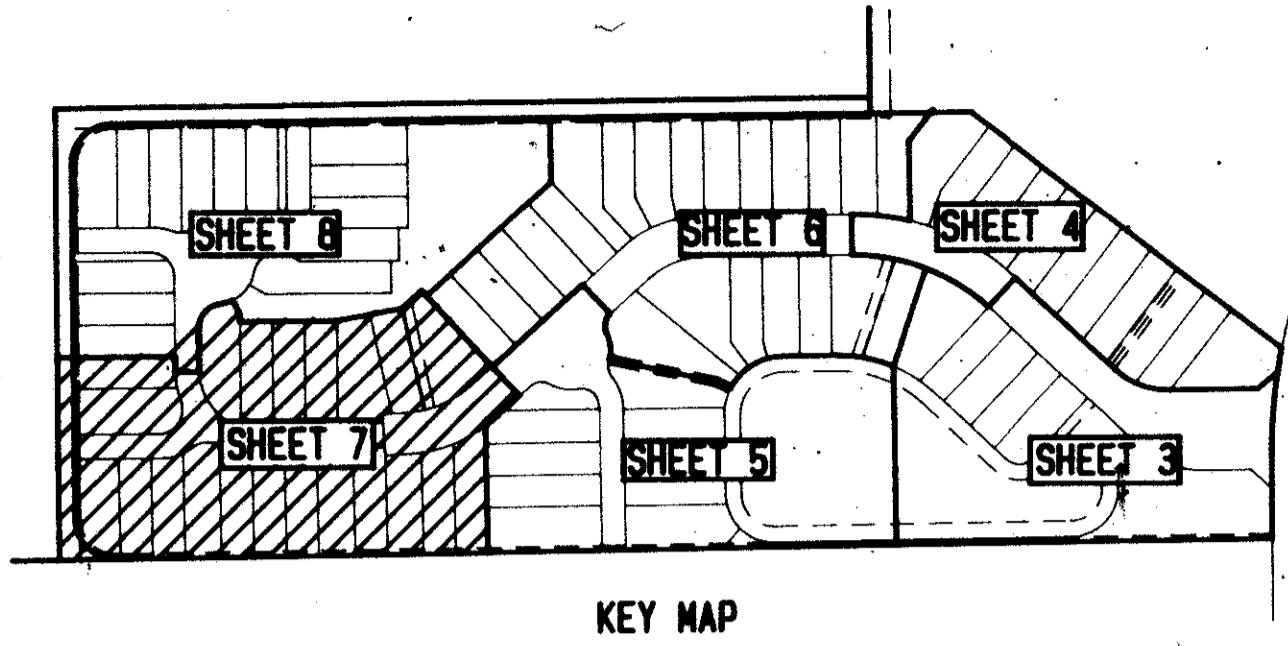


# SAN MICHEL OF THE POLO CLUB

A PART OF THE POLO CLUB P. U. D.

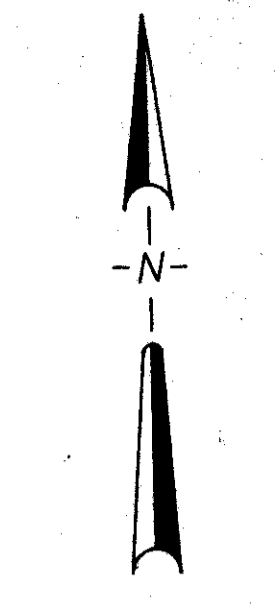
BEING A REPLAT OF A PORTION OF TRACT -1, "THE POLO CLUB PLAT 111" (P. B. 59, PGS. 110-112)  
AND PART OF SECTION 27, TOWNSHIP 46 SOUTH, RANGE 42 EAST  
PALM BEACH COUNTY, FLORIDA



IN 8 SHEETS

LANGAN ENGINEERING ASSOCIATES, INC.  
WEST PALM BEACH, FLORIDA  
AUGUST 1989

SHEET 7 OF 8



STATE OF FLORIDA  
COUNTY OF PALM BEACH  
This plat was filed for  
record at \_\_\_\_\_ M., this \_\_\_\_\_ day  
of \_\_\_\_\_ 198\_\_\_\_ and duly  
recorded in Plat Book no. \_\_\_\_\_  
on Pages \_\_\_\_\_ through \_\_\_\_\_  
JOHN B. DUNKLE  
Clerk Circuit Court  
By: \_\_\_\_\_ D. C.

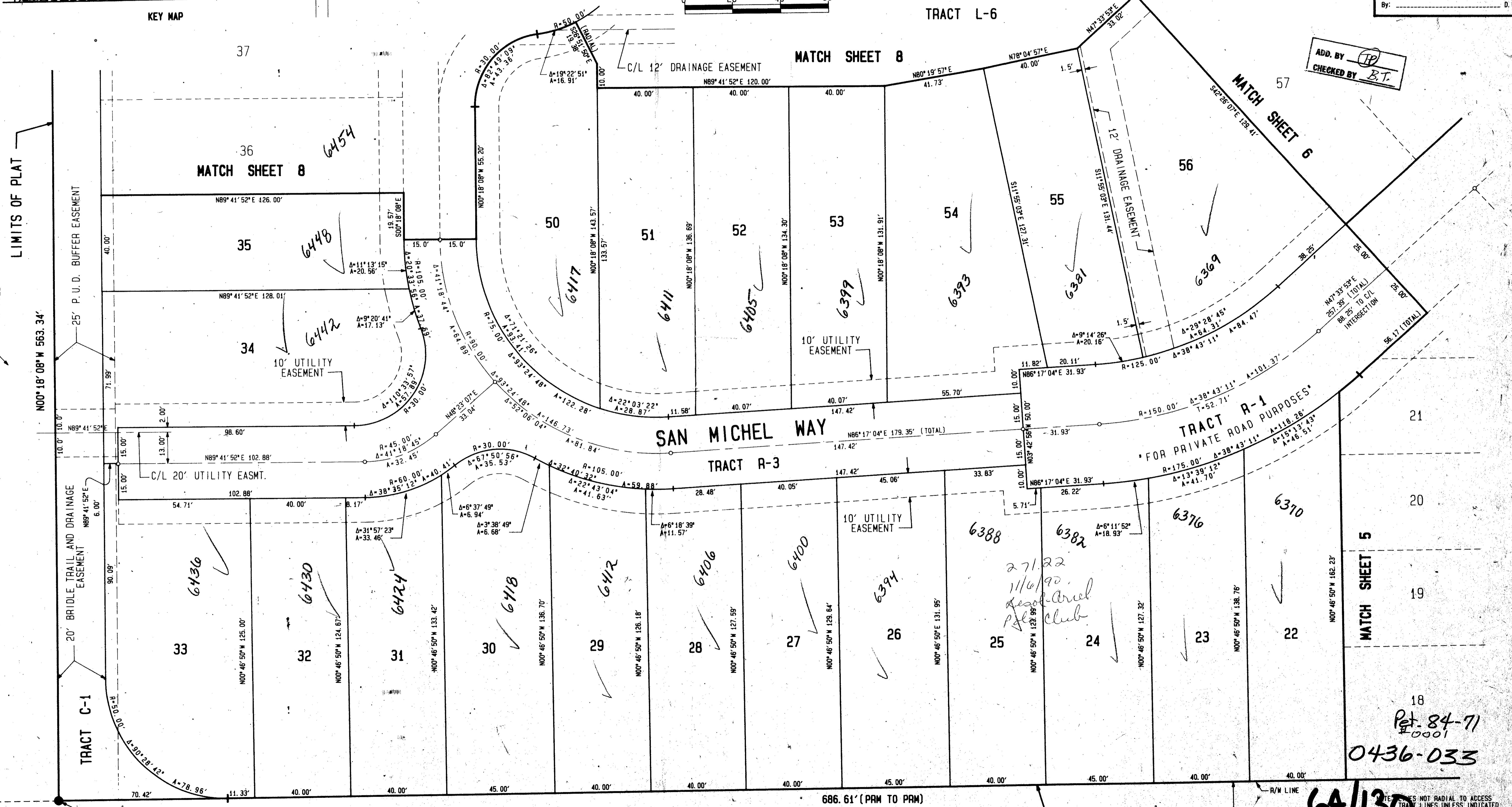
MATCH SHEET 7

TRACT L-6

MATCH SHEET 8

MATCH SHEET 6

ADD. BY *[Signature]*  
CHECKED BY *B.T.*



UNPLATTED

SUBDIVISION # San Michel of the Polo Club  
BOOK 64 PAGE 130  
FLOOR PLAN B PLATT MAP # 0154  
QUAD # 37 TOWNSHIP RS  
CB 84-71 ZIP CODE 33411  
REC'D SAN MICHEL OF THE POLO CLUB (PUD)  
27/16/89

COMPUTED MAY/89  
DRAWN C.K.  
CHECKED W.P.  
COMMENTS JUL/89  
APPROVED  
REVISION

LAKE WORTH DRAINAGE DISTRICT CANAL L-38  
(ORB. 4299, PG. 552, ORB. 5290, PG. 1264)

686.61' (PRM TO PRM)  
589' 13' 10" W 1506.14' (TOTAL)

6A/130  
THIS INSTRUMENT PREPARED BY  
RECTOR PEREZ P.L.L.C.  
569 FOREST HILL BLVD. SUITE 204  
WEST PALM BEACH, FLORIDA 33406

# SAN MICHEL OF THE POLO CLUB

18  
Pet. 84-71  
#0001  
0436-033