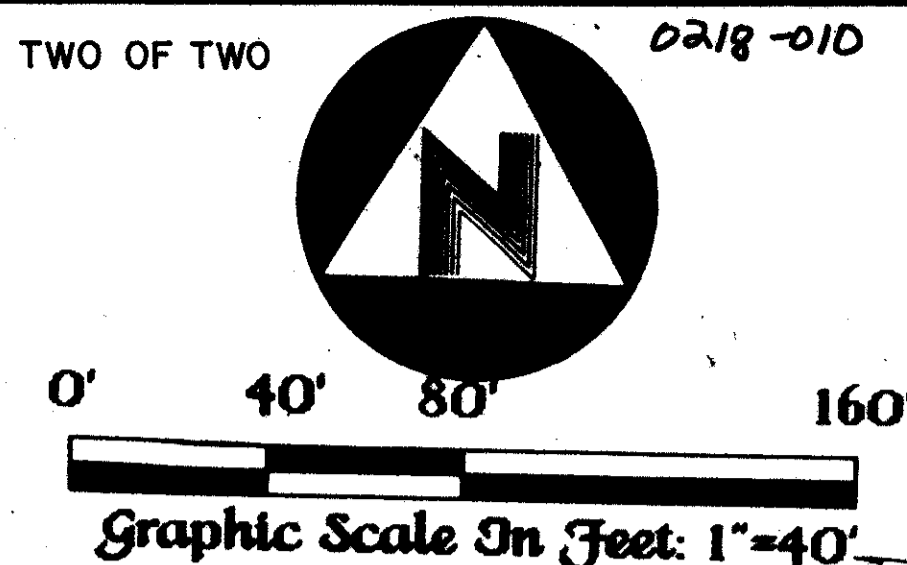


P. O. B.

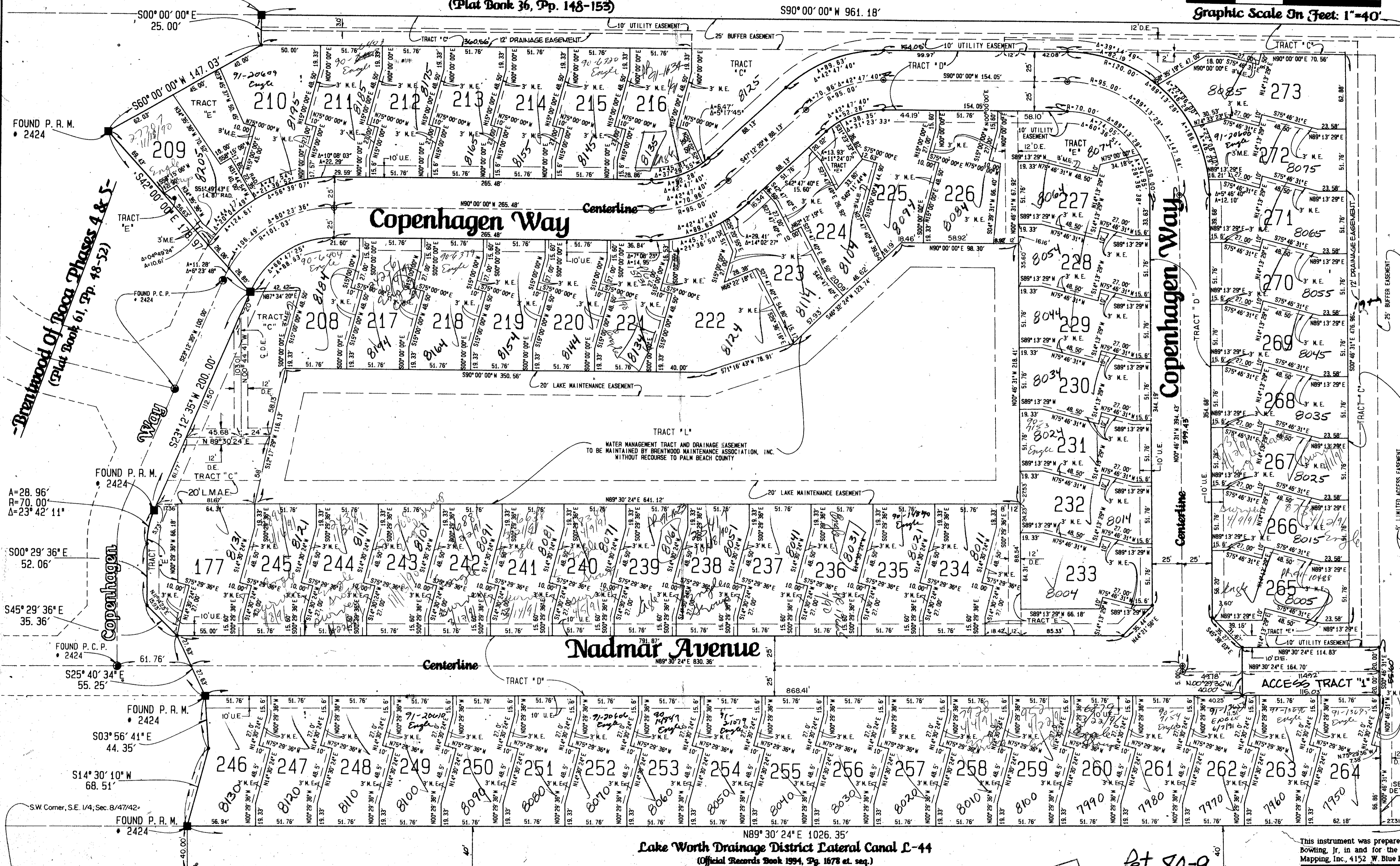
N.E. CORNER, BRENTWOOD
OF BOCA PHASES 4 & 5
(P.B. 61, Pgs. 48-52)
FOUND P. R. M. # 2424

-Brentwood Of Boca Phase 6-

Plat No. 2 SHEET TWO OF TWO
-Century Village West-
(Plat Book 36, Pp. 148-153)



135
State of Florida)
County of Palm Beach) SS
This Plat was filed for record at
A.D., 1989, and duly recorded in
Plat Book _____ on
Page _____ and
John B. Dunkle,
Clerk of the Circuit Court.
By: _____ Deputy Clerk



SUBDIVISION - Brentwood of Boca Phase 6
BOOK 64 PAGE 135
FLOOD ZONE B FLOOD MAP #2108
ROAD # 03 ROAD R/T/SE RD
SE 80-9 ZIP CODE 33434
PUD NAME 1/4/84

TAB 771

- Legend:**
- Indicates A Set Permanent Reference Monument # 2424 (P.R.M.)
 - Indicates A Found Permanent Reference Monument # 2424 (P.R.M.)
 - Indicates A Set Permanent Control Point # 2424 (P.C.P.)
 - Indicates A Found Permanent Control Point # 2424 (P.C.P.)
 - D.E. Indicates A Drainage Easement
 - U.E. Indicates A Utility Easement
 - L.M.E. Indicates A Lake Maintenance Easement
 - L.M.A.E. Indicates A Lake Maintenance Access Easement
 - M.E. Indicates A Maintenance Easement

Lake Worth Drainage District Lateral Canal L-44
(Official Records Book 1994, Pg. 1678 et. seq.)

ADD. BY BT
CHECKED BY BT

Pet. 80-9
0218-010
6A/135

This instrument was prepared by Wm. R. Van Campen, R.L.S., & Gene D. Bowling, Jr. in and for the offices of Bench Mark Land Surveying & Mapping, Inc., 4152 W. Blue Heron Boulevard, Suite 121, Riviera Beach, FL.

BENCH MARK
LAND SURVEYING & MAPPING, INC.
WEST PALM BEACH, FLORIDA - RIVIERA BEACH, FLORIDA

-Record Plat-
Brentwood Of Boca Phase 6

OWN	CKD	DATE	WD
SCALE	SIZE		199
			SHEET 2 OF 2

Lake Worth Drainage District Equalizing Canal E-2-2
(Official Records Book 319, Pgs. 273 et. seq.)
Sunshine State Parkway (S.R. #91)
(Road Book 1125, Pgs. 236 et. seq.)