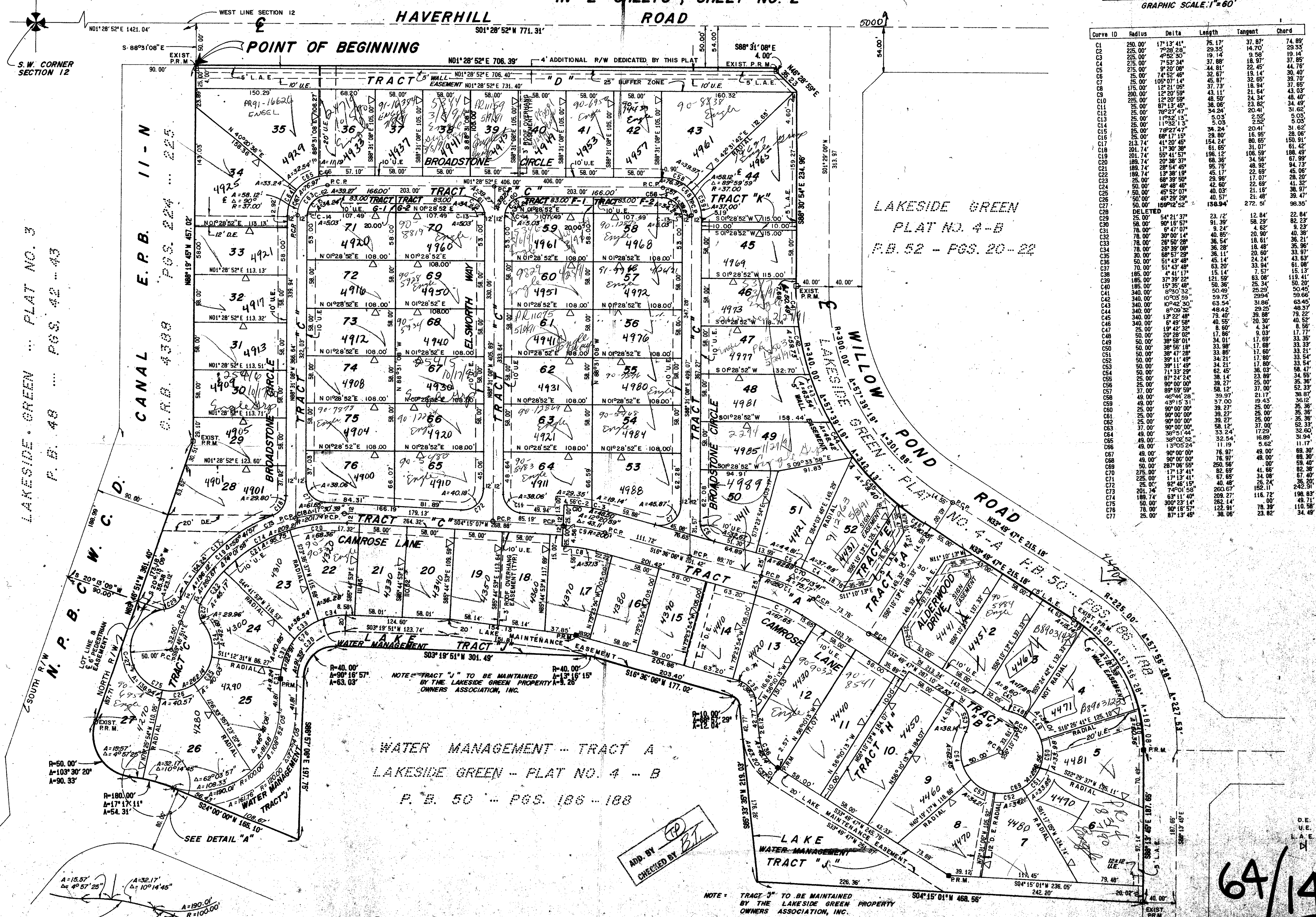
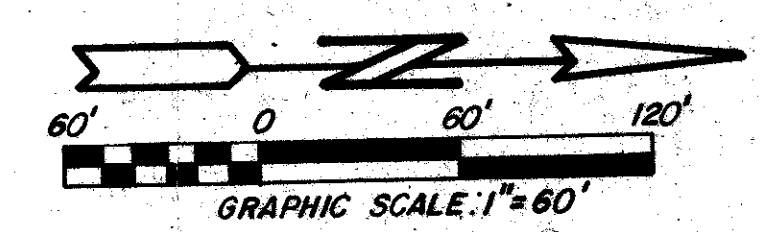


A PORTION OF A P.U.D.
LAKESIDE GREEN - PLAT NO. 9
 SECTION 12, TOWNSHIP 43 SOUTH, RANGE 42 EAST
 PALM BEACH COUNTY, FLORIDA
 IN 2 SHEETS, SHEET NO. 2

0265-005

140



STATE OF FLORIDA
 COUNTY OF PALM BEACH
 This Plat was filed for record at _____ M.
 this _____ day of _____
 19____, and duly recorded in Plat Book No. _____
 on page _____
 JOHN B. DUNKLE, Clerk Circuit Court
 By _____, D.C.

Curve ID	Radius	Delta	Length	Tangent	Chord
C1	250.00'	17°13'41"	75.17'	37.87'	74.89'
C2	250.00'	17°13'41"	75.17'	37.87'	74.89'
C3	250.00'	17°13'41"	75.17'	37.87'	74.89'
C4	250.00'	17°13'41"	75.17'	37.87'	74.89'
C5	250.00'	17°13'41"	75.17'	37.87'	74.89'
C6	250.00'	17°13'41"	75.17'	37.87'	74.89'
C7	250.00'	17°13'41"	75.17'	37.87'	74.89'
C8	250.00'	17°13'41"	75.17'	37.87'	74.89'
C9	250.00'	17°13'41"	75.17'	37.87'	74.89'
C10	250.00'	17°13'41"	75.17'	37.87'	74.89'
C11	250.00'	17°13'41"	75.17'	37.87'	74.89'
C12	250.00'	17°13'41"	75.17'	37.87'	74.89'
C13	250.00'	17°13'41"	75.17'	37.87'	74.89'
C14	250.00'	17°13'41"	75.17'	37.87'	74.89'
C15	250.00'	17°13'41"	75.17'	37.87'	74.89'
C16	250.00'	17°13'41"	75.17'	37.87'	74.89'
C17	250.00'	17°13'41"	75.17'	37.87'	74.89'
C18	250.00'	17°13'41"	75.17'	37.87'	74.89'
C19	250.00'	17°13'41"	75.17'	37.87'	74.89'
C20	250.00'	17°13'41"	75.17'	37.87'	74.89'
C21	250.00'	17°13'41"	75.17'	37.87'	74.89'
C22	250.00'	17°13'41"	75.17'	37.87'	74.89'
C23	250.00'	17°13'41"	75.17'	37.87'	74.89'
C24	250.00'	17°13'41"	75.17'	37.87'	74.89'
C25	250.00'	17°13'41"	75.17'	37.87'	74.89'
C26	250.00'	17°13'41"	75.17'	37.87'	74.89'
C27	250.00'	17°13'41"	75.17'	37.87'	74.89'
C28	250.00'	17°13'41"	75.17'	37.87'	74.89'
C29	250.00'	17°13'41"	75.17'	37.87'	74.89'
C30	250.00'	17°13'41"	75.17'	37.87'	74.89'
C31	250.00'	17°13'41"	75.17'	37.87'	74.89'
C32	250.00'	17°13'41"	75.17'	37.87'	74.89'
C33	250.00'	17°13'41"	75.17'	37.87'	74.89'
C34	250.00'	17°13'41"	75.17'	37.87'	74.89'
C35	250.00'	17°13'41"	75.17'	37.87'	74.89'
C36	250.00'	17°13'41"	75.17'	37.87'	74.89'
C37	250.00'	17°13'41"	75.17'	37.87'	74.89'
C38	250.00'	17°13'41"	75.17'	37.87'	74.89'
C39	250.00'	17°13'41"	75.17'	37.87'	74.89'
C40	250.00'	17°13'41"	75.17'	37.87'	74.89'
C41	250.00'	17°13'41"	75.17'	37.87'	74.89'
C42	250.00'	17°13'41"	75.17'	37.87'	74.89'
C43	250.00'	17°13'41"	75.17'	37.87'	74.89'
C44	250.00'	17°13'41"	75.17'	37.87'	74.89'
C45	250.00'	17°13'41"	75.17'	37.87'	74.89'
C46	250.00'	17°13'41"	75.17'	37.87'	74.89'
C47	250.00'	17°13'41"	75.17'	37.87'	74.89'
C48	250.00'	17°13'41"	75.17'	37.87'	74.89'
C49	250.00'	17°13'41"	75.17'	37.87'	74.89'
C50	250.00'	17°13'41"	75.17'	37.87'	74.89'
C51	250.00'	17°13'41"	75.17'	37.87'	74.89'
C52	250.00'	17°13'41"	75.17'	37.87'	74.89'
C53	250.00'	17°13'41"	75.17'	37.87'	74.89'
C54	250.00'	17°13'41"	75.17'	37.87'	74.89'
C55	250.00'	17°13'41"	75.17'	37.87'	74.89'
C56	250.00'	17°13'41"	75.17'	37.87'	74.89'
C57	250.00'	17°13'41"	75.17'	37.87'	74.89'
C58	250.00'	17°13'41"	75.17'	37.87'	74.89'
C59	250.00'	17°13'41"	75.17'	37.87'	74.89'
C60	250.00'	17°13'41"	75.17'	37.87'	74.89'
C61	250.00'	17°13'41"	75.17'	37.87'	74.89'
C62	250.00'	17°13'41"	75.17'	37.87'	74.89'
C63	250.00'	17°13'41"	75.17'	37.87'	74.89'
C64	250.00'	17°13'41"	75.17'	37.87'	74.89'
C65	250.00'	17°13'41"	75.17'	37.87'	74.89'
C66	250.00'	17°13'41"	75.17'	37.87'	74.89'
C67	250.00'	17°13'41"	75.17'	37.87'	74.89'
C68	250.00'	17°13'41"	75.17'	37.87'	74.89'
C69	250.00'	17°13'41"	75.17'	37.87'	74.89'
C70	250.00'	17°13'41"	75.17'	37.87'	74.89'
C71	250.00'	17°13'41"	75.17'	37.87'	74.89'
C72	250.00'	17°13'41"	75.17'	37.87'	74.89'
C73	250.00'	17°13'41"	75.17'	37.87'	74.89'
C74	250.00'	17°13'41"	75.17'	37.87'	74.89'
C75	250.00'	17°13'41"	75.17'	37.87'	74.89'
C76	250.00'	17°13'41"	75.17'	37.87'	74.89'
C77	250.00'	17°13'41"	75.17'	37.87'	74.89'

SUBDIVISION * Lakeside Green - Plat No. 9
 BOOK 64 PAGE 140
 BLOCK 30
 PLAT NO. 9
 PUD NAME Lakeside Green (PUD)
 DATE 5/14/09

TAZ 170

LAKESIDE GREEN ... PLAT NO. 3
 P.B. 48 ... PGS. 42-43

CANAL E.R.B. 11-N
 C.R.D. 4388 PGS. 224-225

WEST LINE SECTION 12
 POINT OF BEGINNING

S.W. CORNER SECTION 12

DETAIL "A"
 R=180.00'
 Δ=170°17'11"
 A=54.31'

NOTE: TRACT "J" TO BE MAINTAINED BY THE LAKESIDE GREEN PROPERTY OWNERS ASSOCIATION, INC.

NOTE: TRACT "K" TO BE MAINTAINED BY THE LAKESIDE GREEN PROPERTY OWNERS ASSOCIATION, INC.

NOTE: TRACT "L" TO BE MAINTAINED BY THE LAKESIDE GREEN PROPERTY OWNERS ASSOCIATION, INC.

NOTE: TRACT "M" TO BE MAINTAINED BY THE LAKESIDE GREEN PROPERTY OWNERS ASSOCIATION, INC.

NOTE: TRACT "N" TO BE MAINTAINED BY THE LAKESIDE GREEN PROPERTY OWNERS ASSOCIATION, INC.

NOTE: TRACT "O" TO BE MAINTAINED BY THE LAKESIDE GREEN PROPERTY OWNERS ASSOCIATION, INC.

Pet. 77-87
 0265-005

64/140

ROSSI AND MALAVA
 ENGINEERS, INC.
 WEST PALM BEACH
 FLORIDA
 DATE MAY 1999
 A PORTION OF A P.U.D.
LAKESIDE GREEN - PLAT NO. 9
 IN 2 SHEETS SHEET NO. 2