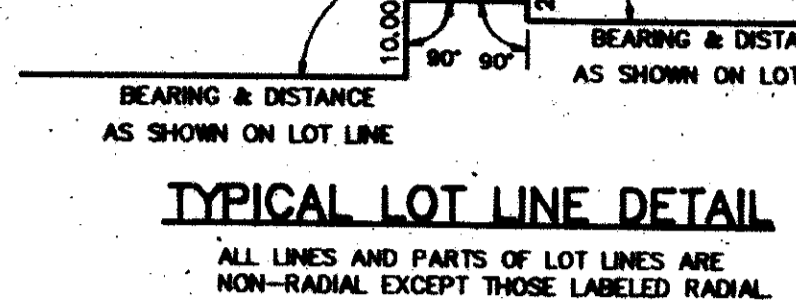
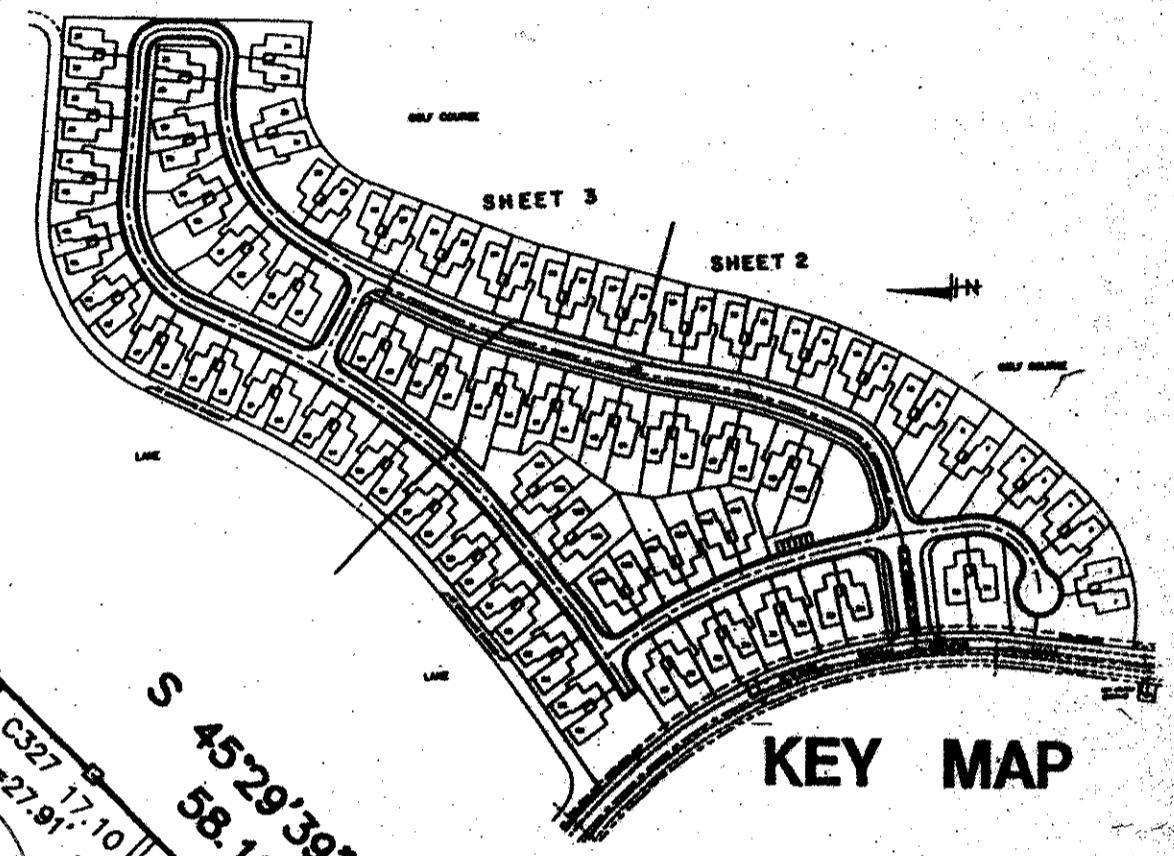


PARCEL 'C' at WYCLIFFE

A PART OF WYCLIFFE GOLF & COUNTRY CLUB, P.U.D.
 BEING A REPLAT OF TRACT 'C' AS SHOWN ON
 WYCLIFFE PLAT ONE AND RECORDED IN PLAT
 BOOK 62, PAGES 8 THRU 13 PUBLIC RECORDS
 SITUATED IN SECTION 25, TOWNSHIP 44 SOUTH,
 RANGE 41 EAST, PALM BEACH COUNTY, FLORIDA.
 SHEET 3 OF 4
 MARCH, 1989

COUNTY OF PALM BEACH
 STATE OF FLORIDA]
 This Plat was filed for record at M.
 this day of
 19 and duly recorded in Plat Book No.
 on page
 JOHN B. DUNKLE, Clerk, Circuit Court
 By D.C.

TRACT 'P'
 WYCLIFFE PLAT ONE
 (P.B. 62, PGS 8-13)

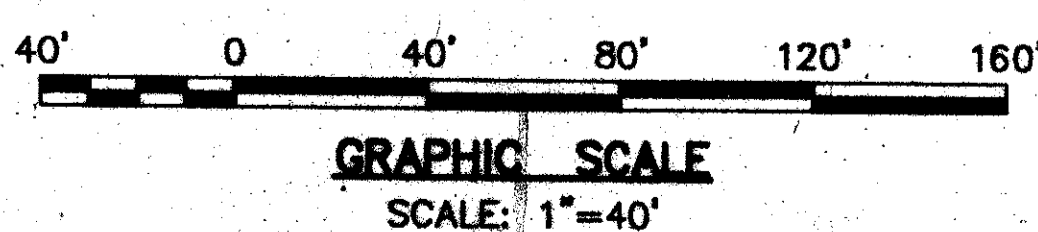


MATCH LINE

TYPICAL LOT LINE DETAIL
 ALL LINES AND PARTS OF LOT LINES ARE
 NON-RADIAL EXCEPT THOSE LABELED RADIAL.

WATER MANAGEMENT
 TRACT 'L-9'
 WYCLIFFE PLAT ONE
 (P.B. 62, PGS 8-13)

TYPICAL LOT LINE DETAIL
 ALL LINES AND PARTS OF LOT LINES ARE
 NON-RADIAL EXCEPT THOSE LABELED RADIAL.



Field Book No. Pg.	ROBERT E. OWEN & ASSOCIATES, INC. ENGINEERS · PLANNERS · SURVEYORS WEST PALM BEACH FLORIDA	PARCEL 'C' at WYCLIFFE	88-1066
Design MITCHELL			1" = 40'
Drawn B. WILLIAMS			MARCH, 1989
Checked			Sheet 4 2

SUBDIVISION: PARCEL 'C' AT WYCLIFFE
 BOOK: 62
 FLOOD ZONE: B
 QUAD: 63
 SE: 26-104
 PUD NAME: WYCLIFFE GOLF & COUNTRY CLUB
 PAGE: 157
 PLANS: 100
 ZONING: RT5
 ZIP CODE: 33407
 737

64/157

0520-006

ADD. BY
 DESIGNED BY