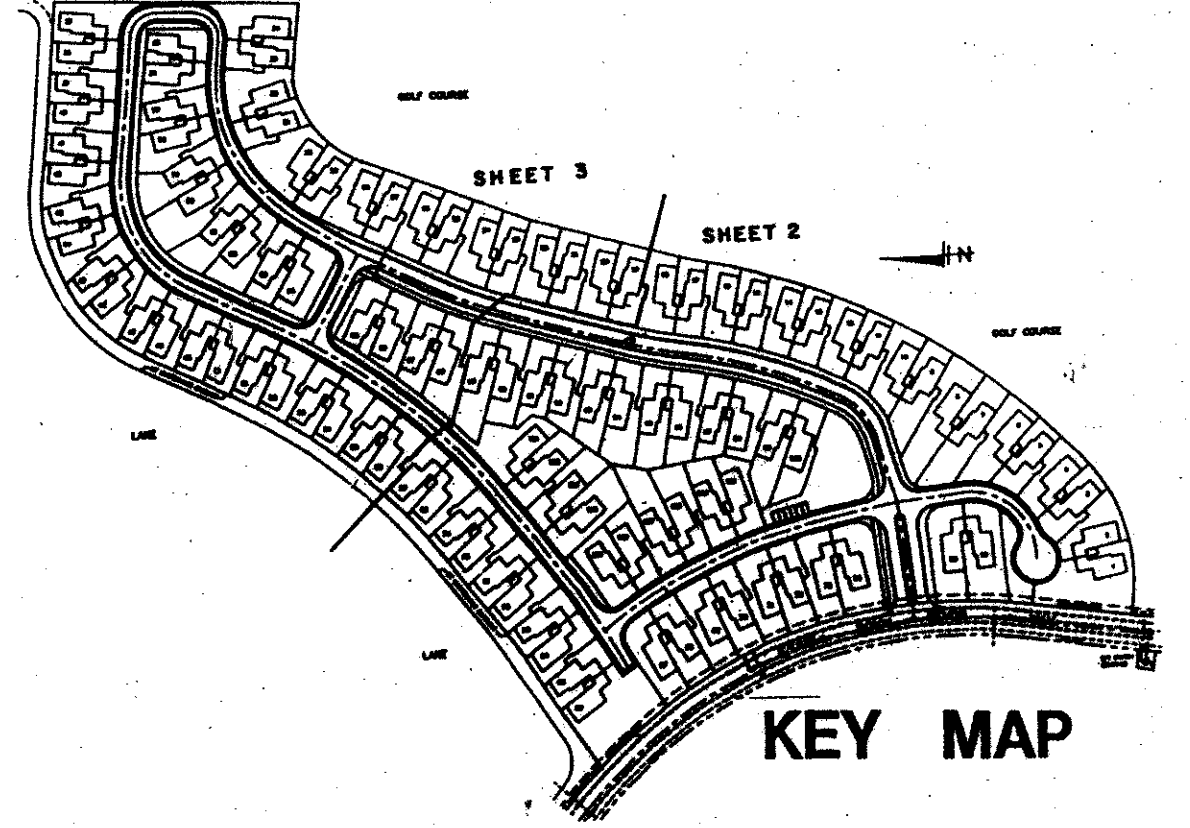


0520-006

PARCEL 'C' at WYCLIFFE

A PART OF WYCLIFFE GOLF & COUNTRY CLUB, P.U.D. BEING A REPLAT OF TRACT 'C' AS SHOWN ON WYCLIFFE PLAT ONE AND RECORDED IN PLAT BOOK 62, PAGES 8 THRU 13 PUBLIC RECORDS SITUATED IN SECTION 25, TOWNSHIP 44 SOUTH, RANGE 41 EAST, PALM BEACH COUNTY, FLORIDA. SHEET 4 OF 4 MARCH, 1989

COUNTY OF PALM BEACH STATE OF FLORIDA This Plat was filed for record at ... M. this ... day of 19 ... and duly recorded in Plat Book No. ... on page JOHN B. DUNKLE, Clerk, Circuit Court By ... D.C.



SHEET No. 2 CURVE DATA

Table with columns: CURVE, DELTA ANGLE, RADIUS, LENGTH, CHORD BEARING, CHORD. Lists curve data for sheets 101 through 330.

Table with columns: CURVE, DELTA ANGLE, RADIUS, LENGTH, CHORD BEARING, CHORD. Continues curve data for sheets 333 through 470.

SHEET No. 3 CURVE DATA

Table with columns: CURVE, DELTA ANGLE, RADIUS, LENGTH, CHORD BEARING, CHORD. Lists curve data for sheets 108 through 615.

Table with columns: CURVE, DELTA ANGLE, RADIUS, LENGTH, CHORD BEARING, CHORD. Lists curve data for sheets 471 through 650.

6A/159

0520-006

SUBDIVISION PARCEL 'C' AT WYCLIFFE BOOK 62 PAGE 159 FLOOD ZONE B FLOOD MAP # 1008 QUAD # 63 ZONING R1S CE 26-104 ZIP CODE 33467 PUD NAME WYCLIFFE GOLF & COUNTRY CLUB TAZ 757

Field Book No. Pg. Design MITZELFELD Drawn B. WILLIAMS Checked. ROBERT E. OWEN & ASSOCIATES, INC. ENGINEERS - PLANNERS - SURVEYORS WEST PALM BEACH FLORIDA. PARCEL 'C' at WYCLIFFE. No. 88-1066 Date MARCH, 1989 Sheet of 4 4 File No. BT-2437