

ASHLEY LAKE PARK II

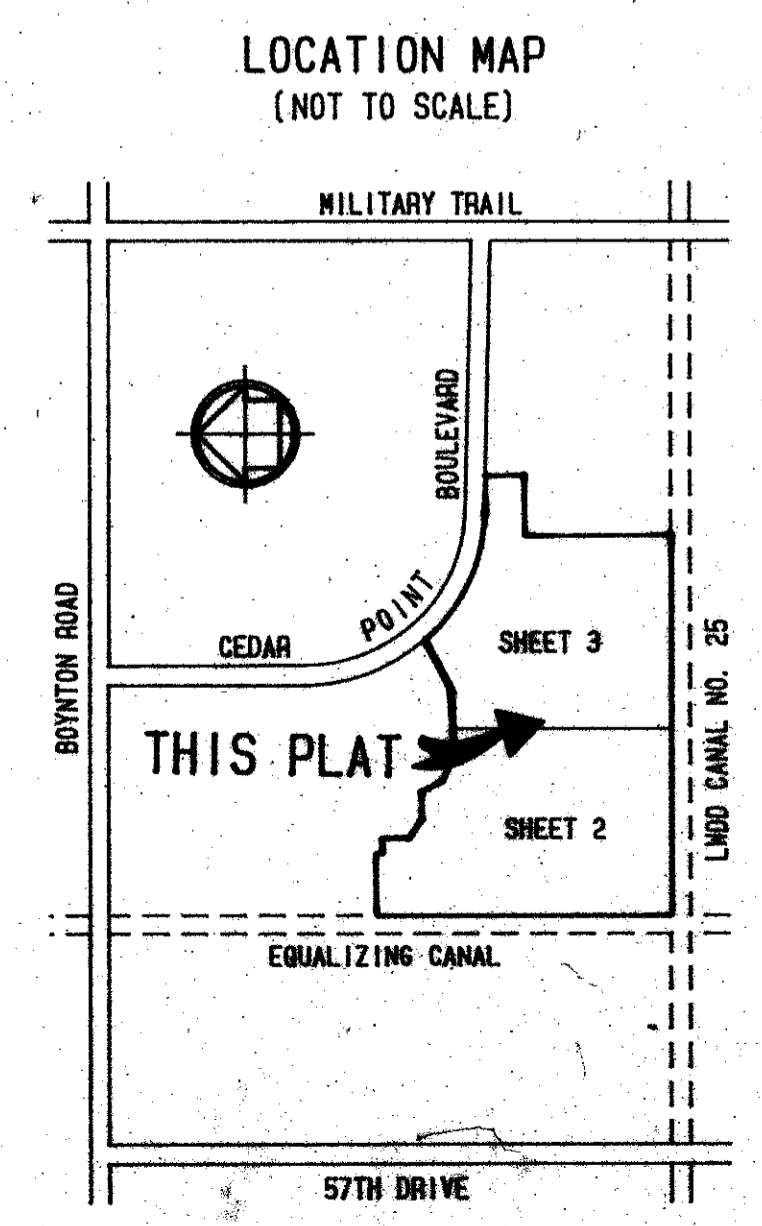
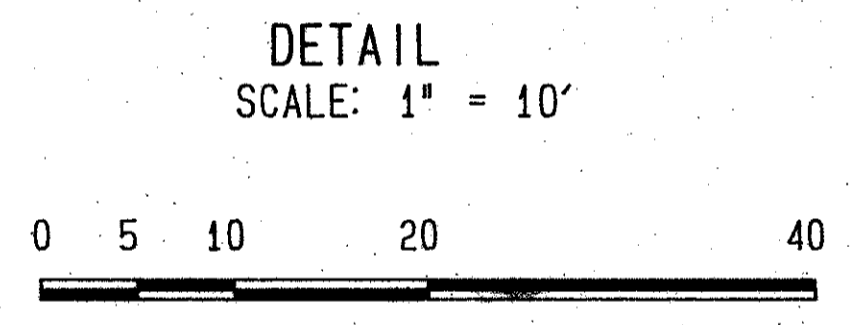
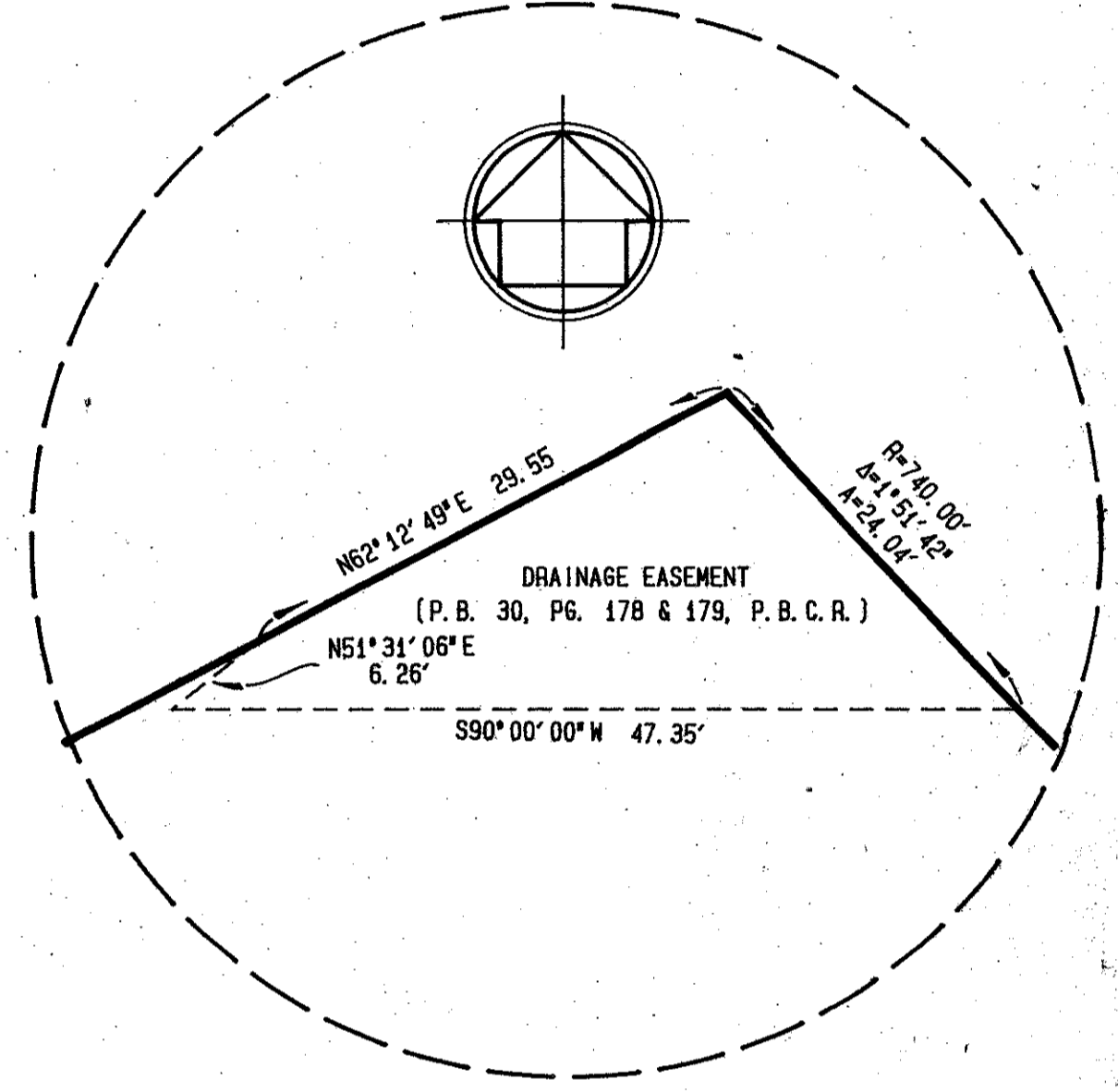
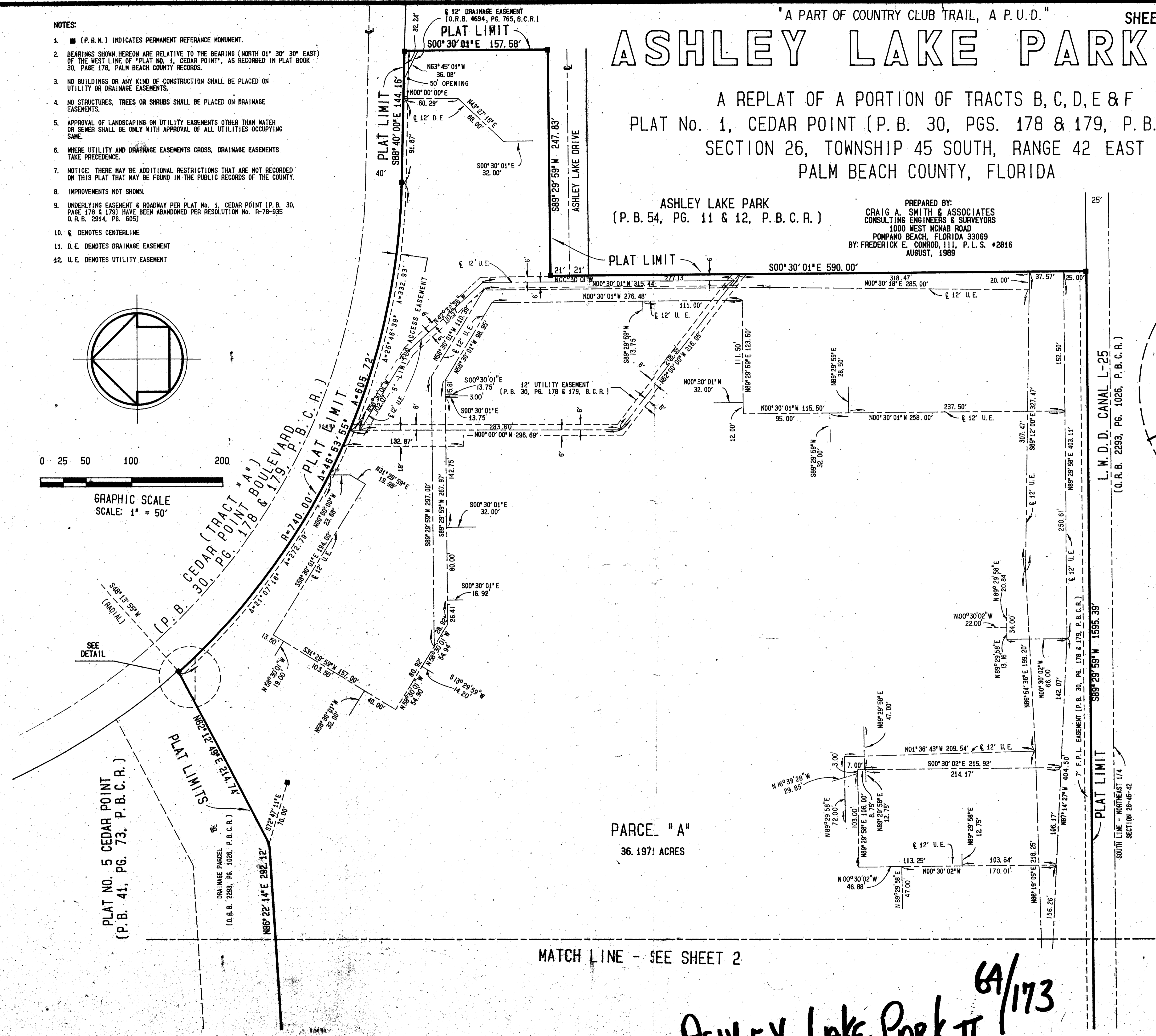
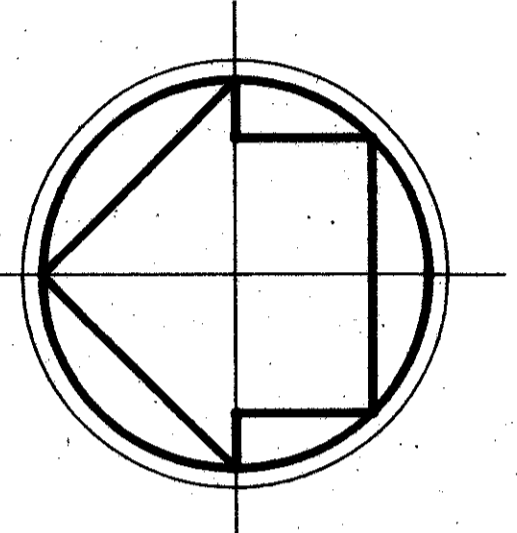
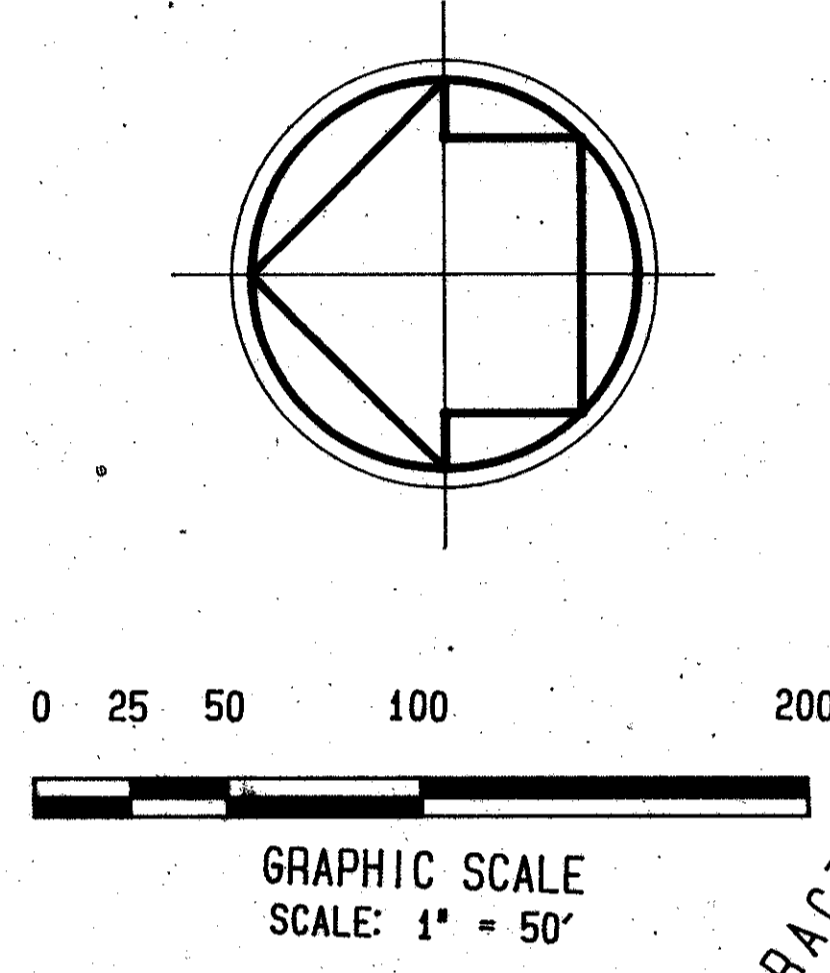
A REPLAT OF A PORTION OF TRACTS B, C, D, E & F
PLAT No. 1, CEDAR POINT (P.B. 30, PGS. 178 & 179, P.B.C.R.)
SECTION 26, TOWNSHIP 45 SOUTH, RANGE 42 EAST
PALM BEACH COUNTY, FLORIDA

ASHLEY LAKE PARK
(P.B. 54, PG. 11 & 12, P.B.C.R.)

PREPARED BY:
CRAIG A. SMITH & ASSOCIATES
CONSULTING ENGINEERS & SURVEYORS
1000 WEST MCNAB ROAD
POMPAHO BEACH, FLORIDA 33069
BY: FREDERICK E. CONROD, III, P.L.S. #2816
AUGUST, 1989

STATE OF FLORIDA }
COUNTY OF PALM BEACH } SS
THIS PLAT WAS FILED FOR
RECORD AT _____ THIS
DAY OF _____ 1990 A.D.
AND DULY RECORDED IN PLAT BOOK
No. _____ ON PAGES
AND
JOHN B. DUNKLE, CLERK
BY _____, D.C.

- NOTES:
- (P.R.M.) INDICATES PERMANENT REFERENCE MONUMENT.
 - BEARINGS SHOWN HEREON ARE RELATIVE TO THE BEARING (NORTH 01° 30' 30" EAST) OF THE WEST LINE OF PLAT NO. 1, CEDAR POINT, AS RECORDED IN PLAT BOOK 30, PAGE 178, PALM BEACH COUNTY RECORDS.
 - NO BUILDINGS OR ANY KIND OF CONSTRUCTION SHALL BE PLACED ON UTILITY OR DRAINAGE EASEMENTS.
 - NO STRUCTURES, TREES OR SHRUBS SHALL BE PLACED ON DRAINAGE EASEMENTS.
 - APPROVAL OF LANDSCAPING ON UTILITY EASEMENTS OTHER THAN WATER OR SEWER SHALL BE ONLY WITH APPROVAL OF ALL UTILITIES OCCUPYING SAME.
 - WHERE UTILITY AND DRAINAGE EASEMENTS CROSS, DRAINAGE EASEMENTS TAKE PRECEDENCE.
 - NOTICE: THERE MAY BE ADDITIONAL RESTRICTIONS THAT ARE NOT RECORDED ON THIS PLAT THAT MAY BE FOUND IN THE PUBLIC RECORDS OF THE COUNTY.
 - IMPROVEMENTS NOT SHOWN.
 - UNDERLYING EASEMENT & ROADWAY PER PLAT No. 1, CEDAR POINT (P.B. 30, PAGE 178 & 179) HAVE BEEN ABANDONED PER RESOLUTION No. R-78-935 O.R.B. 2914, PG. 605)
 - ☉ DENOTES CENTERLINE
 - D.E. DENOTES DRAINAGE EASEMENT
 - U.E. DENOTES UTILITY EASEMENT



PARCEL "A"
36.1971 ACRES

MATCH LINE - SEE SHEET 2

72-446

SUBDIVISION - ASHLEY LAKE PARK II
BOOK 24 PAGE 173
FLOOD ZONE (20) FLOOD MAP # 190 G
ZAD # 35 ZONING AC
72-51 ZIP CODE 33437
JD NAME A PART OF COUNTRY CLUB TRAIL

64/173

ASHLEY LAKE PARK II