

SUNTERRACE AT THE GARDENS

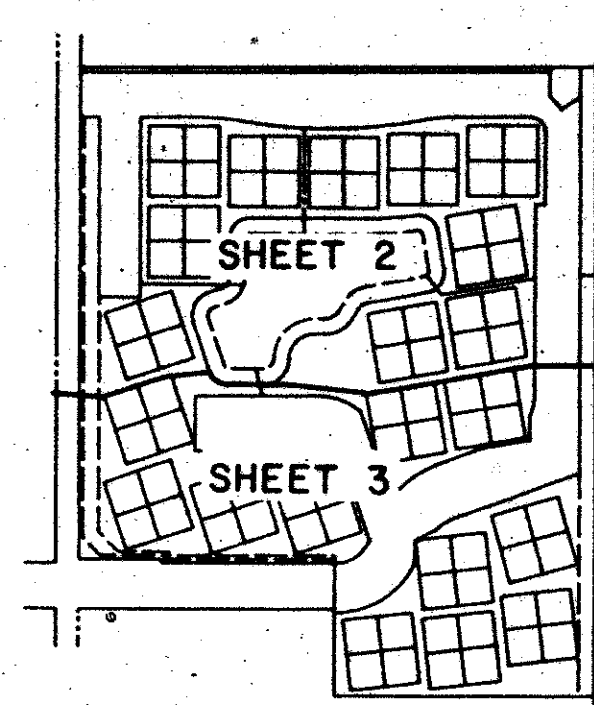
BEING A PORTION OF THE SOUTHEAST QUARTER OF THE SOUTHWEST QUARTER OF SECTION 18, TOWNSHIP 42 SOUTH, RANGE 43 EAST, PALM BEACH COUNTY, FLORIDA

SHEET 3 OF 3

DECEMBER, 1989

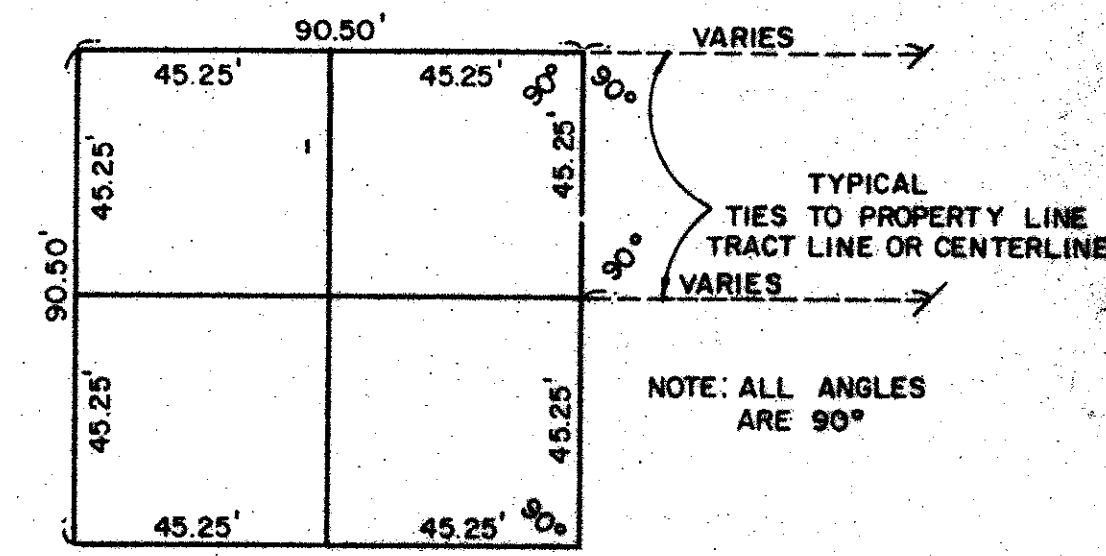
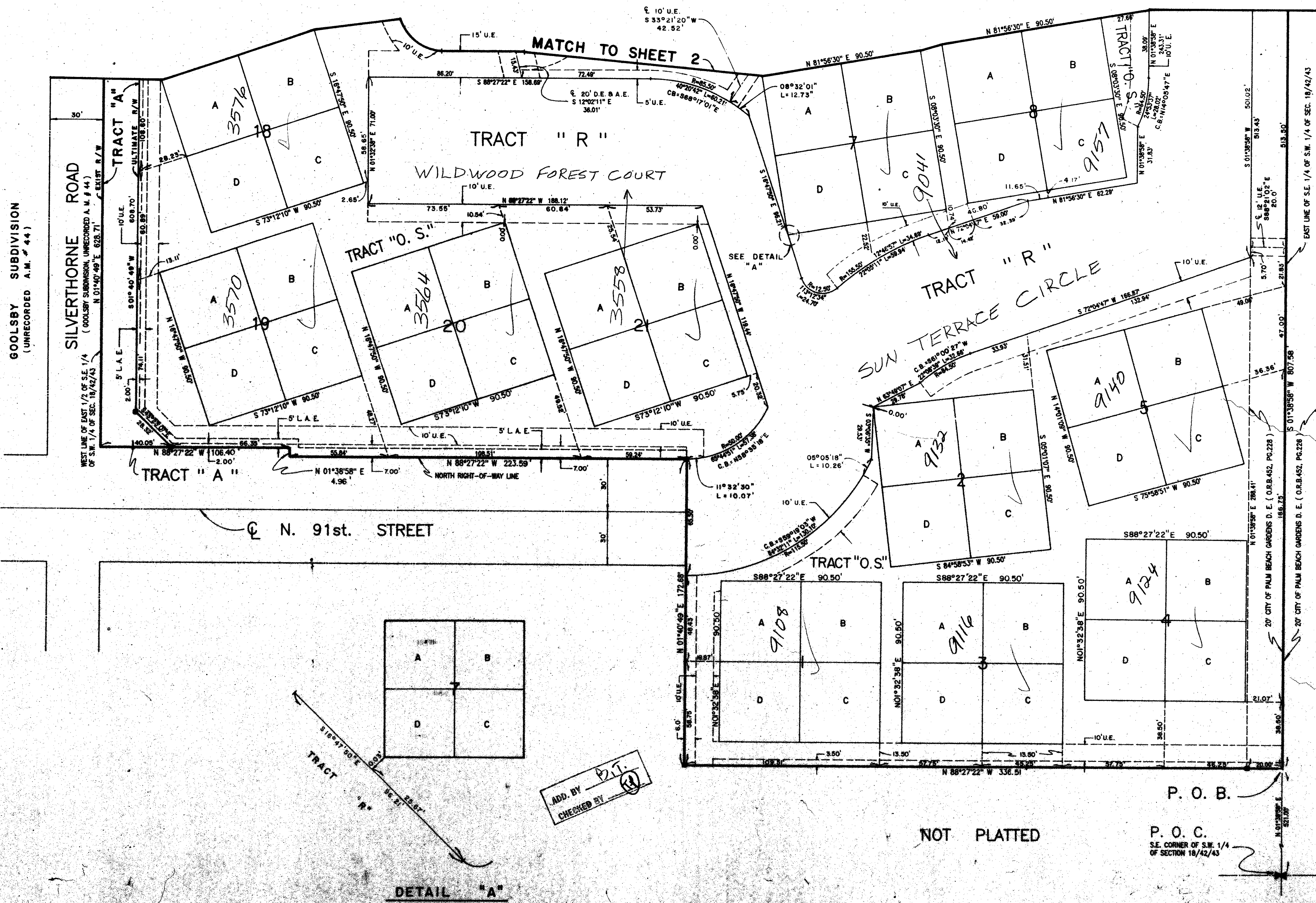
0575

176



KEY MAP
N.T.S.

STATE OF FLORIDA
COUNTY OF PALM BEACH
This Plat was filed for record at _____
M. this ____ day of _____, 19____
and duly recorded in Plat Book No. _____
on Page _____
John B. Dunkle, Clerk of the Circuit Court
By _____, D.C.



NOT PLATED



0575-001

64/176

DIVISION - SUNTERRACE AT THE GARDENS
PAGE 17
ZONING MAP # 1308
ZONING 2.1
ZIP CODE 33403
TAX 105

ADD. BY [Signature]
CHECKED BY [Signature]

DETAIL "A"
N.T.S.

P. O. B.

P. O. C.
S.E. CORNER OF S.W. 1/4
OF SECTION 18/42/43

Landmark Surveying & Mapping Inc.
1850 FOREST HILL BOULEVARD
PALM BEACH, FLORIDA 33410
SUITE 100
SUNTERRACE AT THE GARDENS