

EQUESTRIAN CLUB ESTATES - PLAT NO. 3  
OF PALM BEACH POLO AND COUNTRY CLUB  
WELLINGTON COUNTRYPLACE - P.U.D.

IN PART OF SECTION 20, TOWNSHIP 44 SOUTH, RANGE 41 EAST

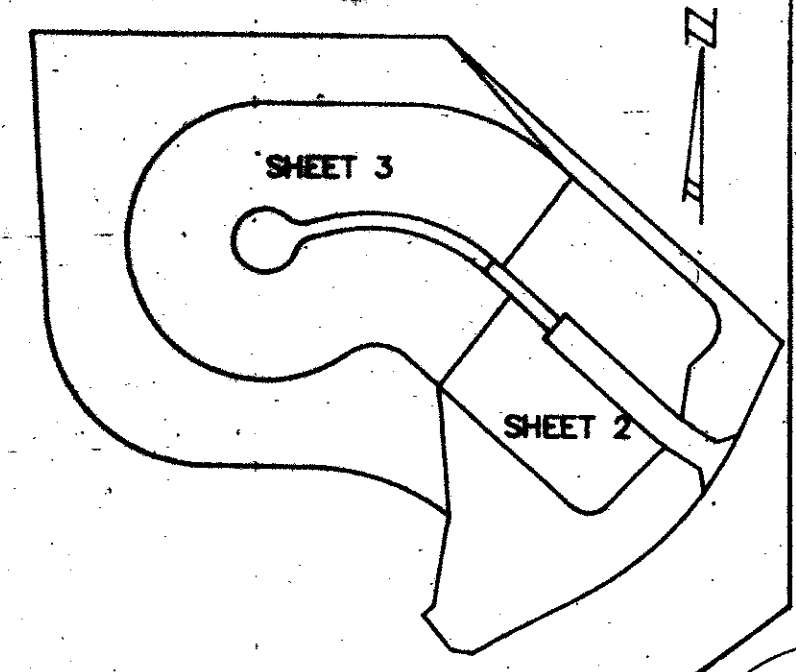
PALM BEACH COUNTY, FLORIDA

SHEET 3 OF 3 SHEETS

MAY 1989

PALM BEACH POLO EQUESTRIAN CLUB PLAT No. 3  
OF WELLINGTON COUNTRYPLACE, P.U.D.  
P.B. 61, PGS. 114 & 115

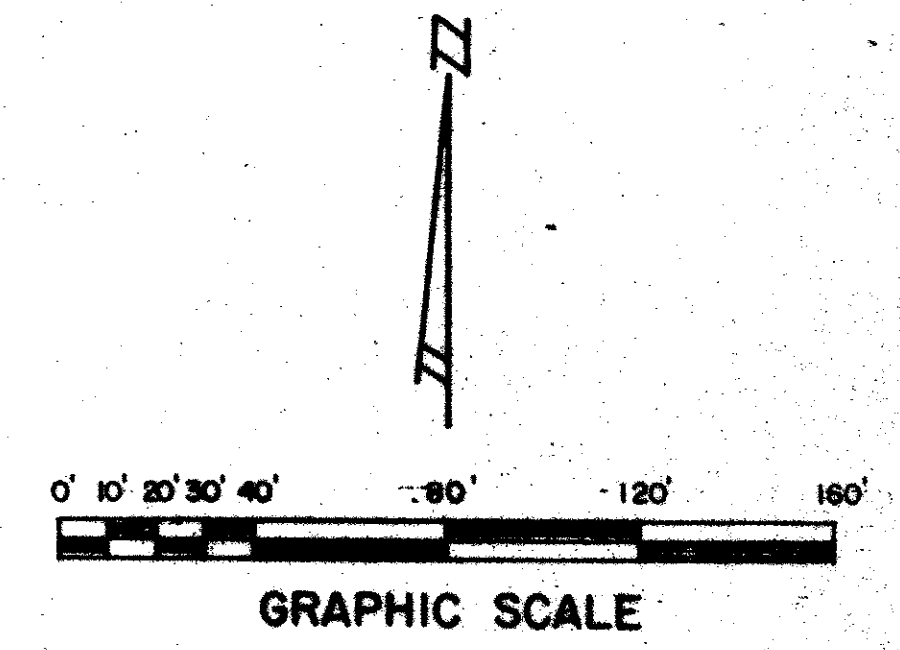
PALM BEACH POLO EQUESTRIAN CLUB PLAT No. 3  
OF WELLINGTON COUNTRYPLACE, P.U.D.  
P.B. 61, PGS. 114 & 115



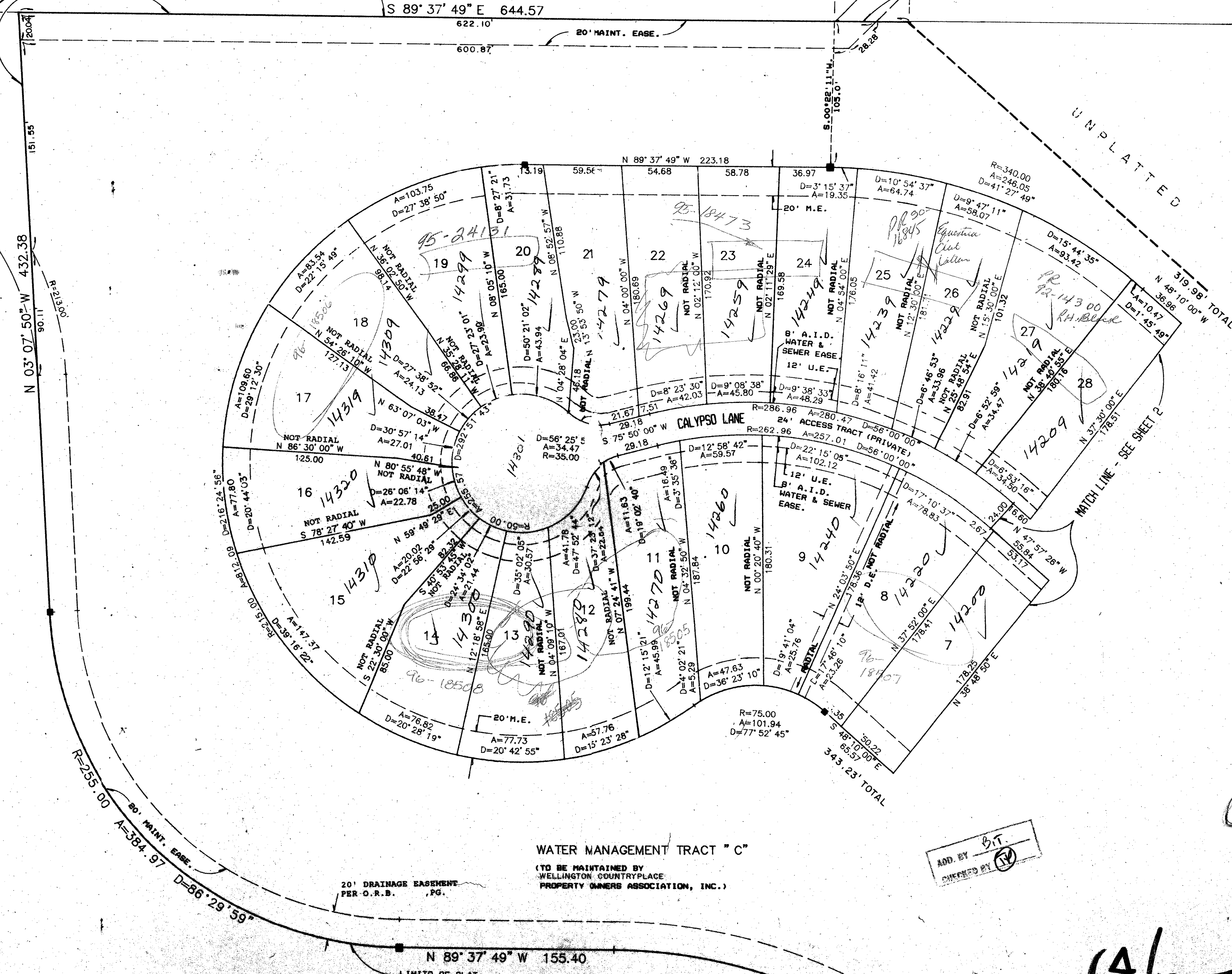
SHEET INDEX MAP

UNPLATTED

UNPLATTED



EQUESTRIAN CLUB ESTATES  
PLAT No. 2  
PER P.B. 64, PG. 190-192



WATER MANAGEMENT TRACT "C"  
(TO BE MAINTAINED BY  
WELLINGTON COUNTRYPLACE  
PROPERTY OWNERS ASSOCIATION, INC.)

20' DRAINAGE EASEMENT  
PER O.R.B. PG.

ADD BY *S.T.*  
CHECKED BY *(Signature)*

N 89° 37' 49" W 155.40  
LIMITS OF PLAT

EQUESTRIAN CLUB ESTATES  
PLAT No. 2  
PER P.B. 64, PG. 190-192

R=370.73  
A=233.61  
D=36° 06' 14"

TAN. BEAR.  
6.53° 31' 35" E.

0333-007

6A/195

RE-76-60  
RE-PUD

EQUESTRIAN CLUB ESTATES PLAT  
SUBDIVISION # NO. 3 OF PALM BEACH POLO  
BOOK 64 PAGE 195  
FLOOD ZONE A0(0) FLOOD MAP # ICGG  
QUAD # 78 ZONING RE  
SE 76-60 ZIP CODE 33414  
PUD NAME WELLINGTON COUNTRYPLACE PUD

SCALE: 1" = 40'	NICK MILLER, INC. Land Surveying & Engineering	DRAWN BY
DATE: MAY 1989		CHECKED BY
EQUESTRIAN CLUB ESTATES - PLAT No. 3 OF PALM BEACH POLO AND COUNTRY CLUB WELLINGTON COUNTRYPLACE, P.U.D.		
1989 B.C.A. Form 1-88 (Rev. 1/88) Palm Beach County, Florida		