

# THE LEXINGTON CLUB PLAT NO.3

0506-003

6

MAY, A.D., NINETEEN HUNDRED EIGHTY NINE

SHEET TWO OF THREE

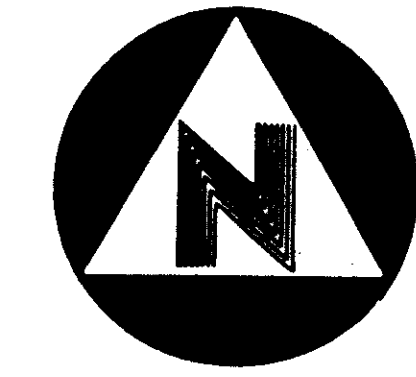
State Of Florida )  
County Of Palm Beach )

This Plat was filed for record at  
this day of  
A.D., 1989, and duly recorded  
in Plat Book \_\_\_\_\_ on  
Page \_\_\_\_\_ And \_\_\_\_\_

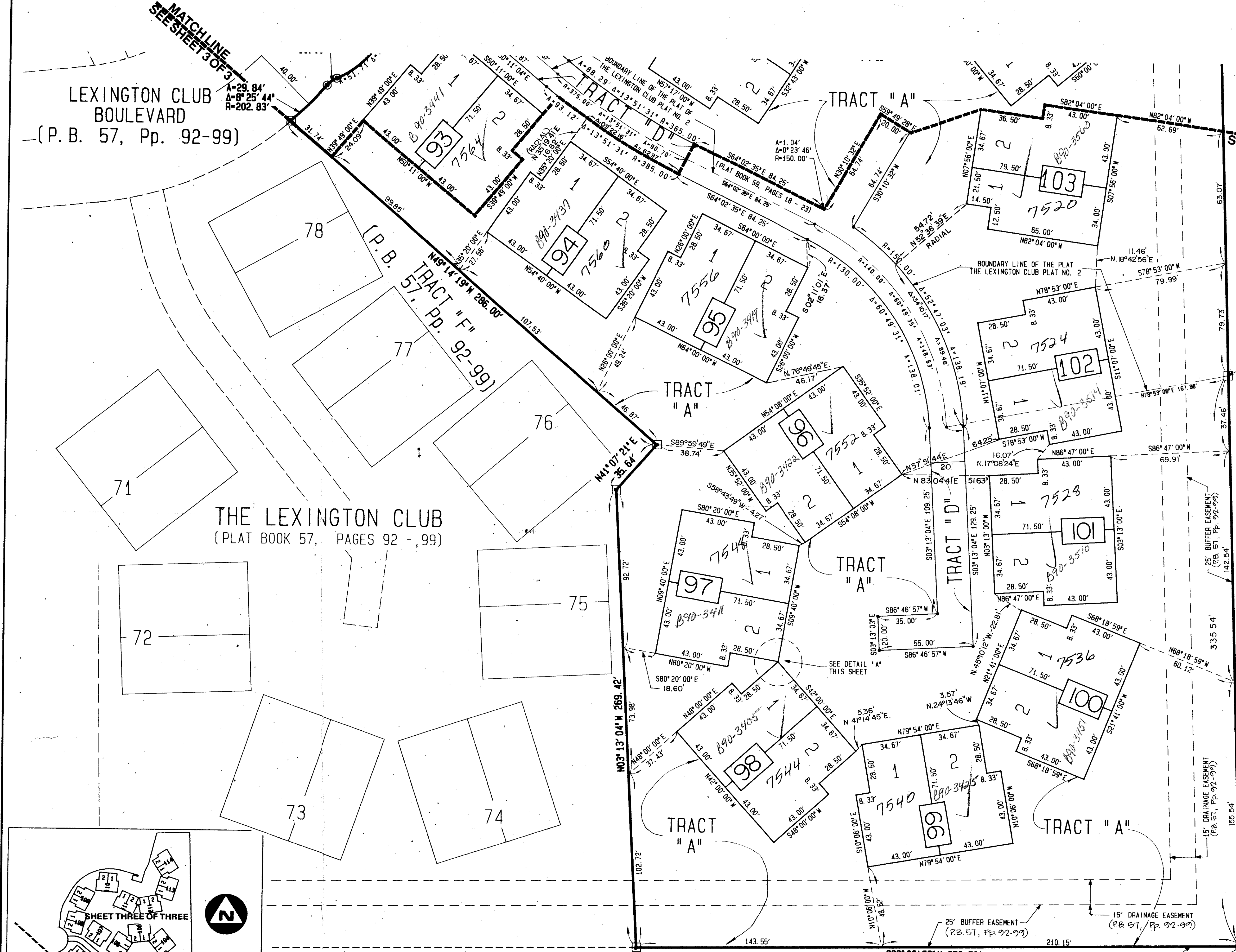
John B. Dunkle,  
Clerk of the Circuit Court.

By: \_\_\_\_\_  
Deputy Clerk

LEXINGTON CLUB  
BOULEVARD  
(P. B. 57, Pp. 92-99)

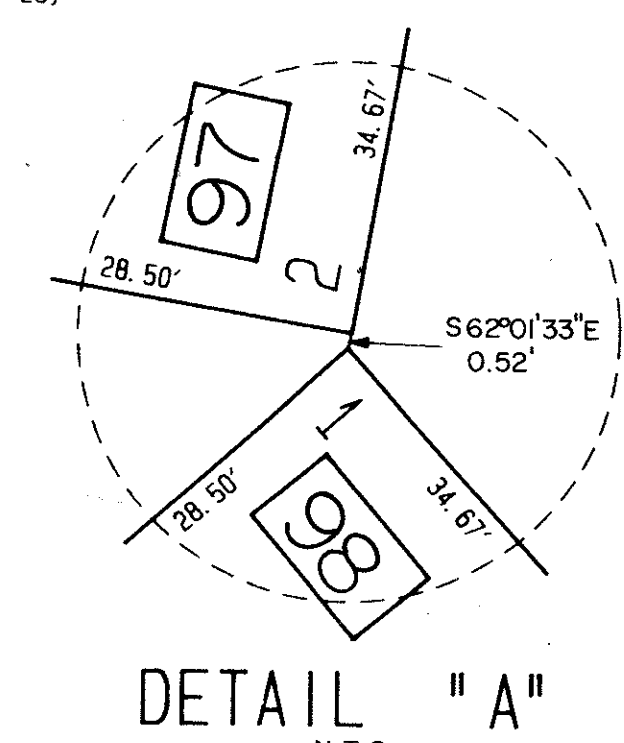


0' 30' 60' 120'  
GRAPHIC SCALE IN FEET: 1" = 30'



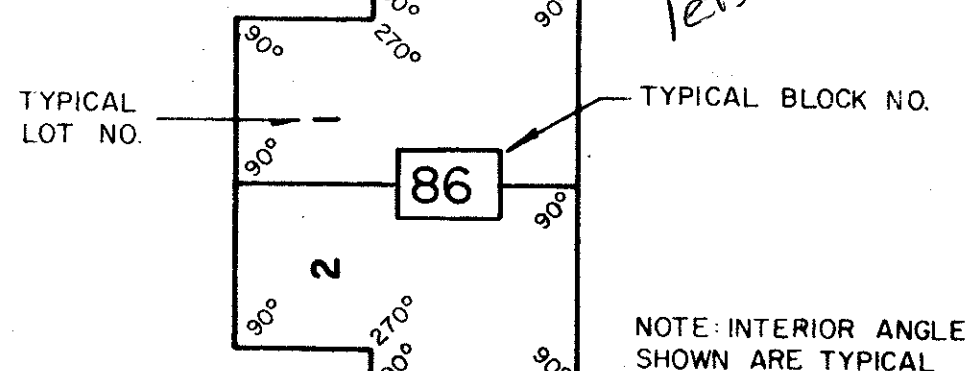
THE LEXINGTON CLUB  
(PLAT BOOK 57, PAGES 92 - 99)

GLENEAGLES PLAT NO. 3  
(PLAT BOOK 51, PAGES 145 - 148)



NOTE: ALL INTERIOR LOT ANGLES ARE 90° OR MULTIPLES THEREOF, AND ARE RELATIVE TO THE BEARINGS SHOWN ON SAID LOTS.

**LEGEND:**  
 ○ INDICATES A PERMANENT REFERENCE MONUMENT #2424 (P.R.M.)  
 ● INDICATES A PERMANENT CONTROL POINT #2424 (P.C.P.)  
 D.E. INDICATES A DRAINAGE EASEMENT  
 U.E. INDICATES A UTILITY EASEMENT  
 L.A.E. INDICATES A LIMITED ACCESS EASEMENT



NOTE: INTERIOR ANGLES SHOWN ARE TYPICAL

P. O. B.  
S. E. CORNER PLAT OF  
THE LEXINGTON CLUB

0506-003  
65/6

ADD. BY BT  
CHECKED BY [Signature]

**BENCH MARK**  
LAND SURVEYING & MAPPING, INC.  
WEST PALM BEACH, FLORIDA - RIVIERA BEACH, FLORIDA

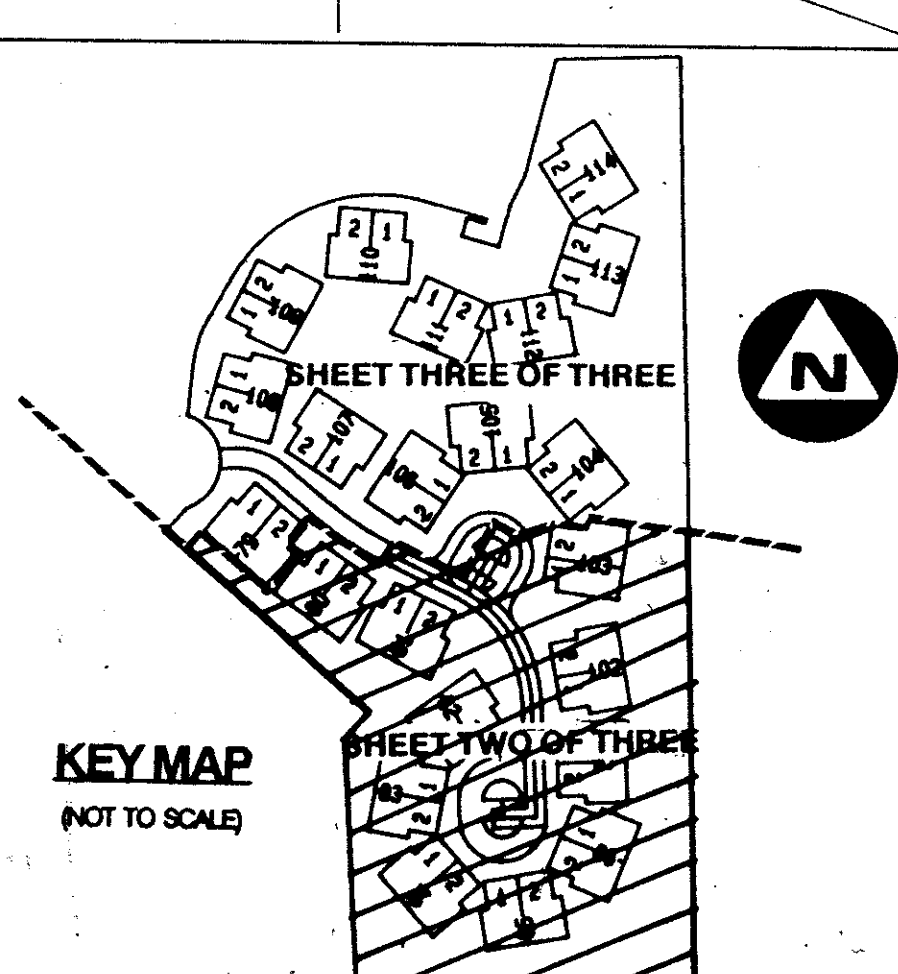
RECORD PLAT  
THE LEXINGTON CLUB PLAT NO. 3

OWN	CKD	DATE	WD. NO.
SCALE 1"=30'	SIZE L	MAY, 89	P49
		FB P	SHEET 2 OF 3

GLENEAGLES PLAT NO. 3  
(PLAT BOOK 51, PAGES 145 - 148)

This instrument was prepared by Wm. R. Van Campen, R.L.S., in and for the offices of Bench Mark Land Surveying & Mapping, Inc., 4182 W. Blue Heron Boulevard Suite 121, Riviera Beach, Florida

SECTION 6 OF THE LEXINGTON CLUB PLAT NO. 3  
PAGE 6  
B  
S2  
80-6  
HAMILTON PLACE



TAZ 468