

# THE LEXINGTON CLUB PLAT NO.3

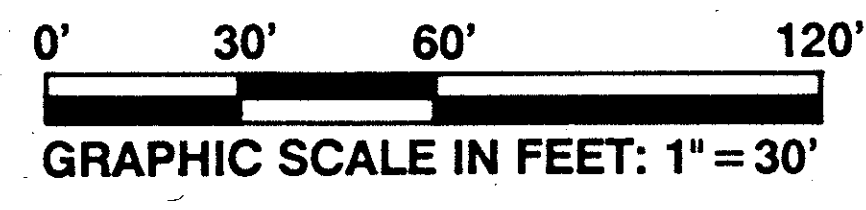
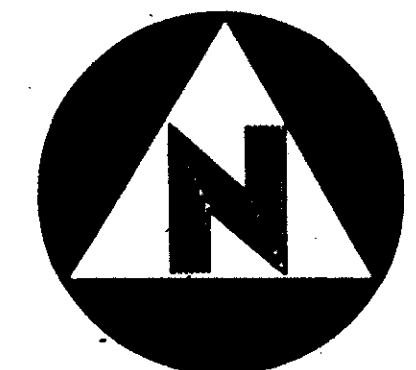
0506-003

7

MAY, A.D., NINETEEN HUNDRED EIGHTY NINE

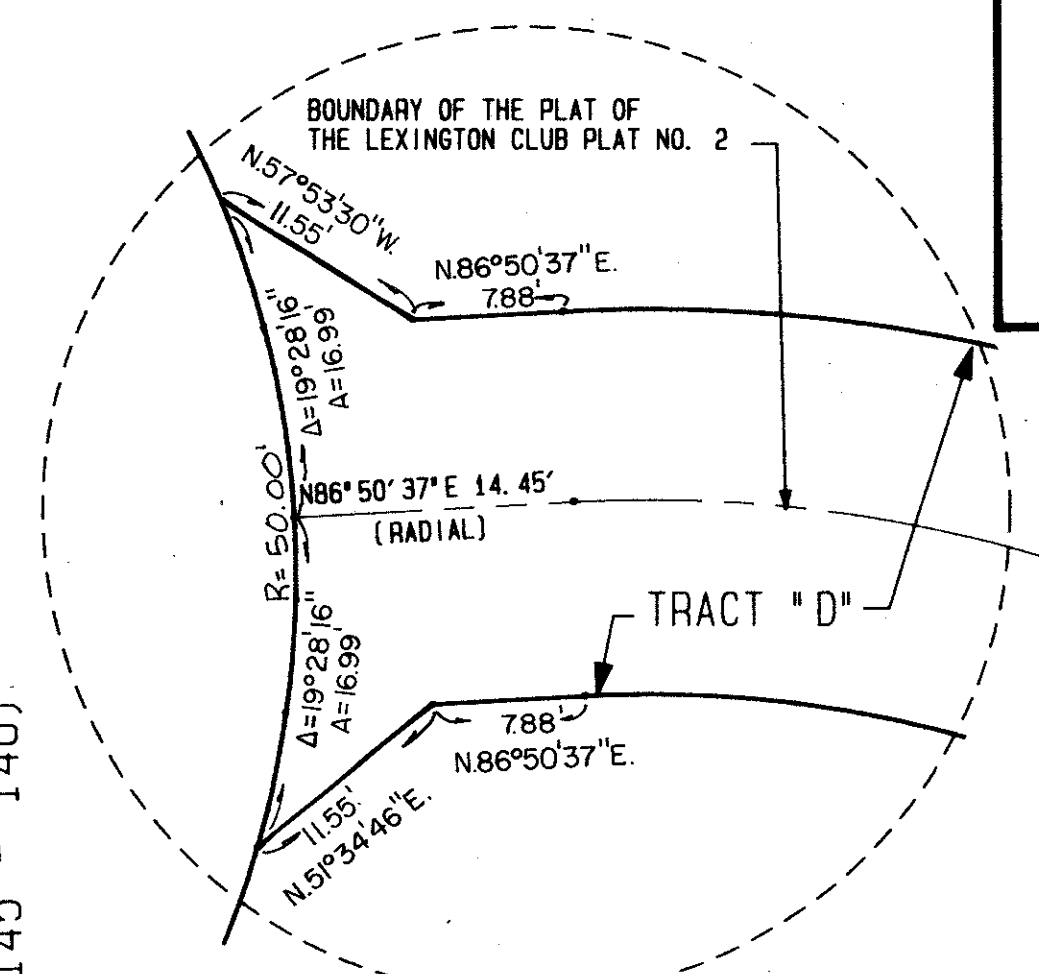
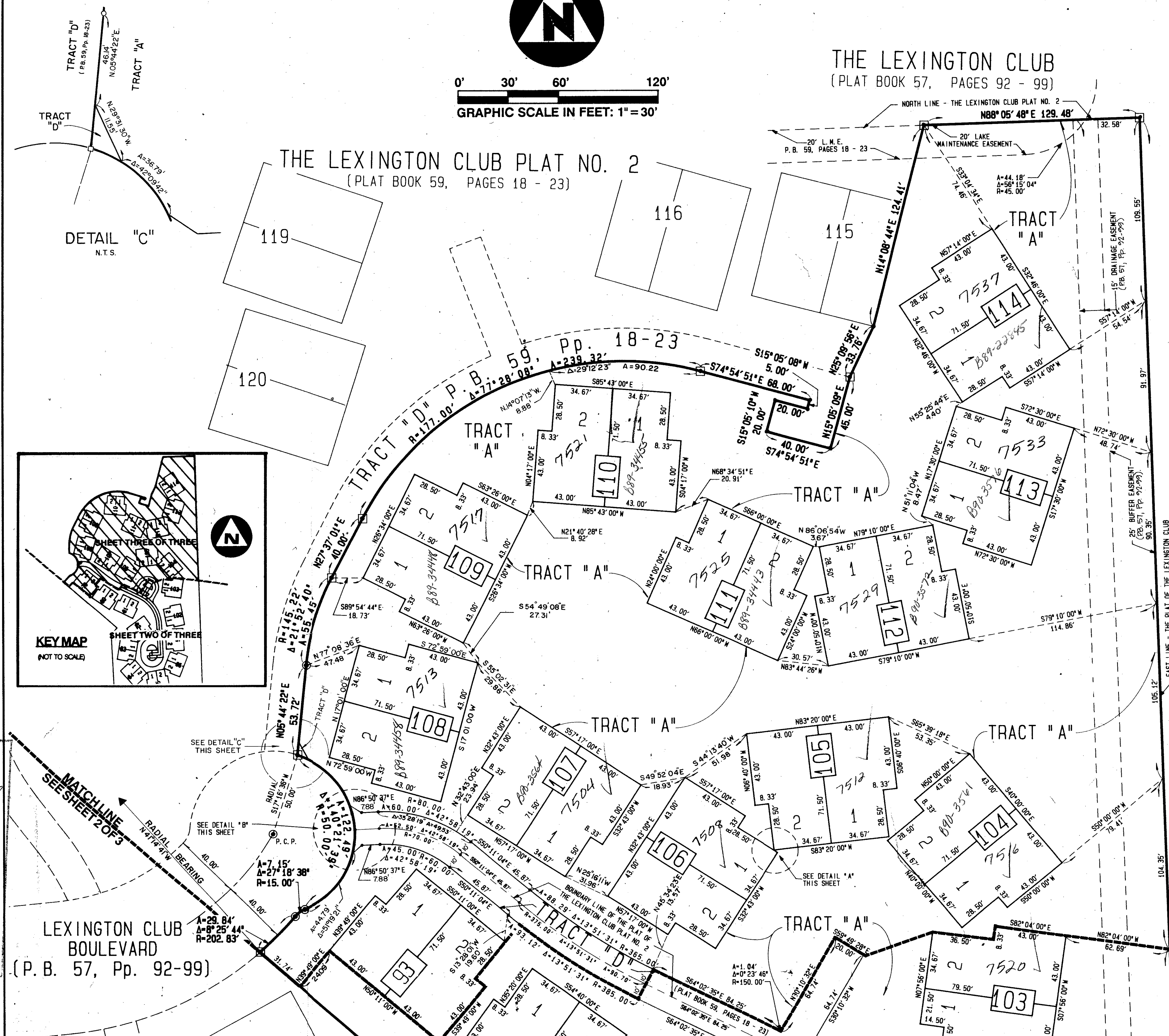
SHEET THREE OF THREE

State Of Florida )  
County Of Palm Beach )  
This Plat was filed for record at  
this day of \_\_\_\_\_  
A.D., 1989, and duly recorded in  
Plat Book \_\_\_\_\_ on  
Page \_\_\_\_\_ through \_\_\_\_\_  
John B. Dunkle,  
Clerk of the Circuit Court.  
By: \_\_\_\_\_, Deputy Clerk



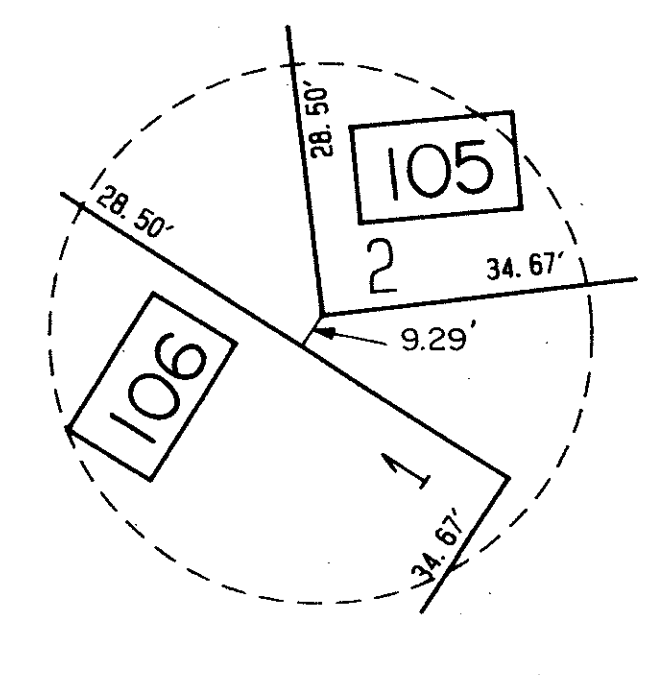
THE LEXINGTON CLUB  
(PLAT BOOK 57, PAGES 92 - 99)

THE LEXINGTON CLUB PLAT NO. 2  
(PLAT BOOK 59, PAGES 18 - 23)



DETAIL "B"  
SCALE: 1" = 10'

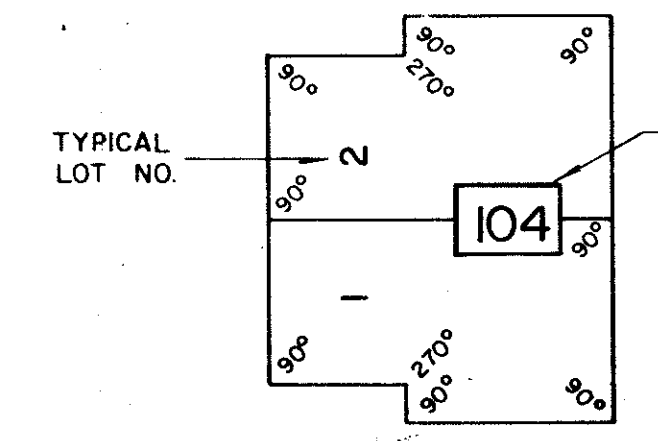
NOTE: ALL INTERIOR LOT ANGLES ARE 90° OR MULTIPLES THEREOF, AND ARE RELATIVE TO THE BEARINGS SHOWN ON SAID LOTS.



DETAIL "A"  
N.T.S.

**LEGEND:**

- INDICATES A PERMANENT REFERENCE MONUMENT #2424 (P.R.M.)
- INDICATES A PERMANENT CONTROL POINT #2424 (P.C.P.)
- INDICATES A DRAINAGE EASEMENT
- INDICATES A UTILITY EASEMENT
- INDICATES A LIMITED ACCESS EASEMENT



NOTE: INTERIOR ANGLES SHOWN ARE TYPICAL

This instrument was prepared by Wm. R. Van Campen, R.L.S., in and for the offices of Bench Mark Land Surveying & Mapping, Inc., 4152 W. Blue Heron Boulevard Suite 121, Riviera Beach, Florida

**BENCH MARK**  
LAND SURVEYING & MAPPING, INC.  
WEST PALM BEACH, FLORIDA - RIVIERA BEACH, FLORIDA

RECORD PLAT  
THE LEXINGTON CLUB PLAT NO. 3

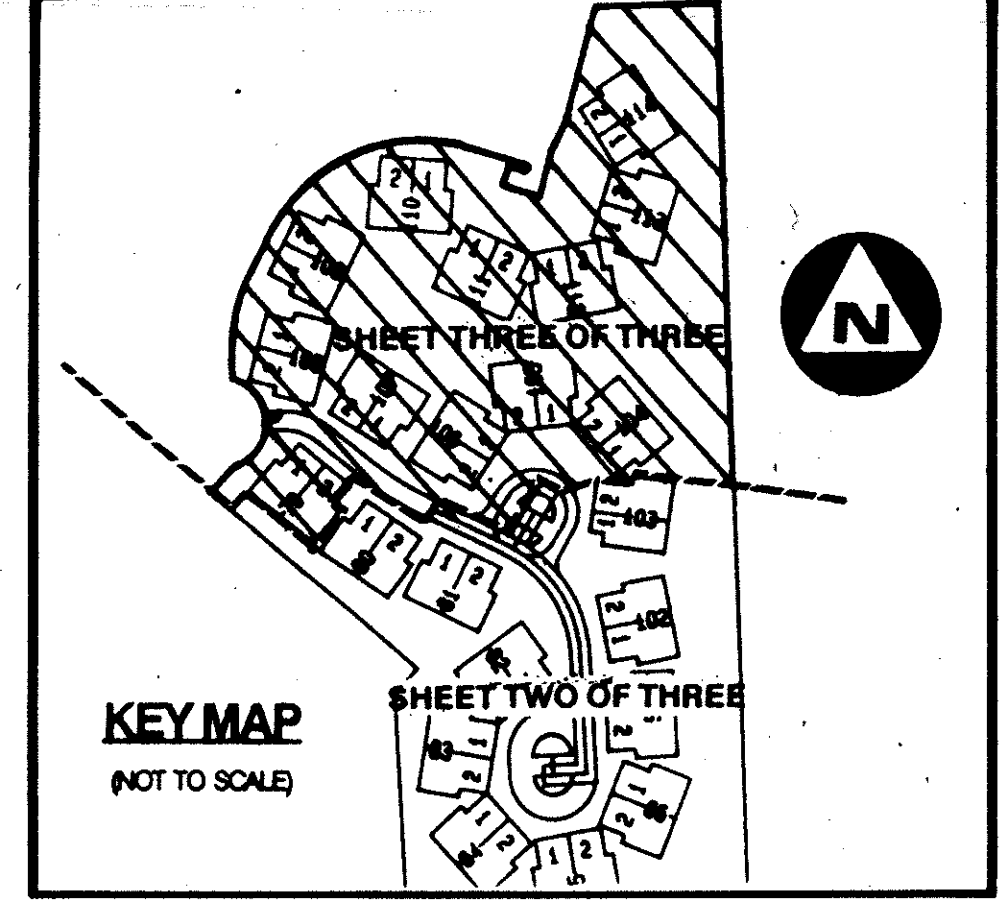
OWN	CKD	DATE	MAY, 89	WD. NO.	P49
SCALE	1"=30'	SIZE	L	FB	P
		SHEET		3 OF 3	

0506-003

65/7  
ADD. BY BT  
CHECKED BY [Signature]

SUBDIVISION OF THE LEXINGTON CLUB PLAT NO. 3  
BOOK 65 PAGE 7  
MAP # 215A  
RS  
80-6  
HAMILTON PLATS

LEXINGTON CLUB BOULEVARD  
(P.B. 57, Pp. 92-99)



DETAIL "C"  
N.T.S.

GLENEAGLES PLAT NO. 3  
(PLAT BOOK 51, PAGES 145 - 148)

TAZ 468