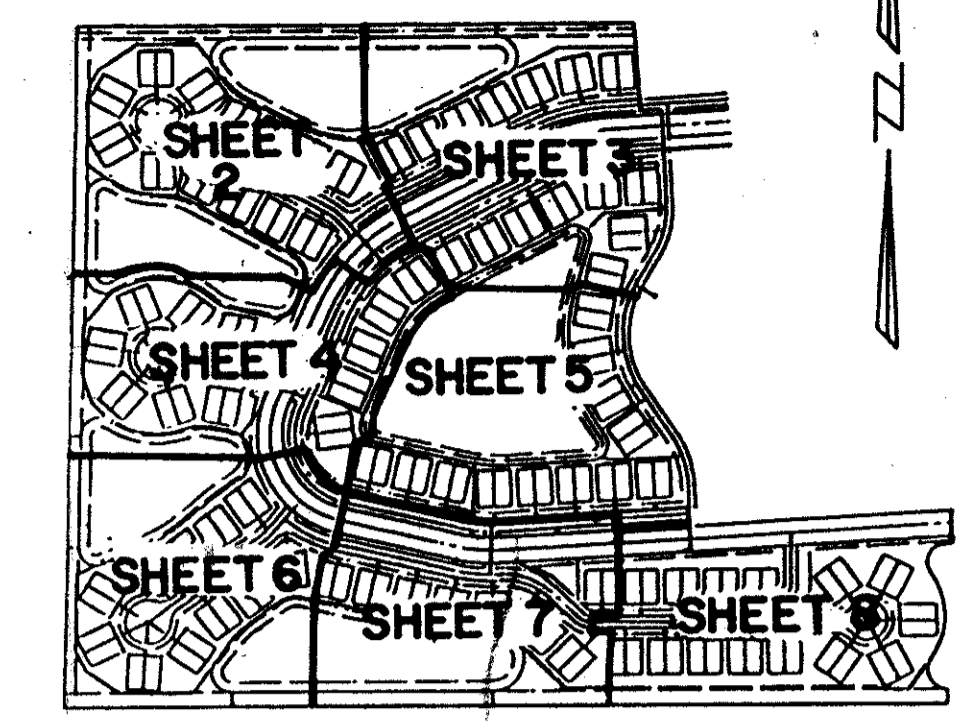


EMERALD POINTE PLAT NO. 2

A PART OF A PLANNED UNIT DEVELOPMENT
 LYING IN SECTION 16, TOWNSHIP 46 SOUTH, RANGE 42 EAST
 PALM BEACH COUNTY, FLORIDA.
 SHEET 6 OF 8 FEBRUARY, 1990.

0440-002

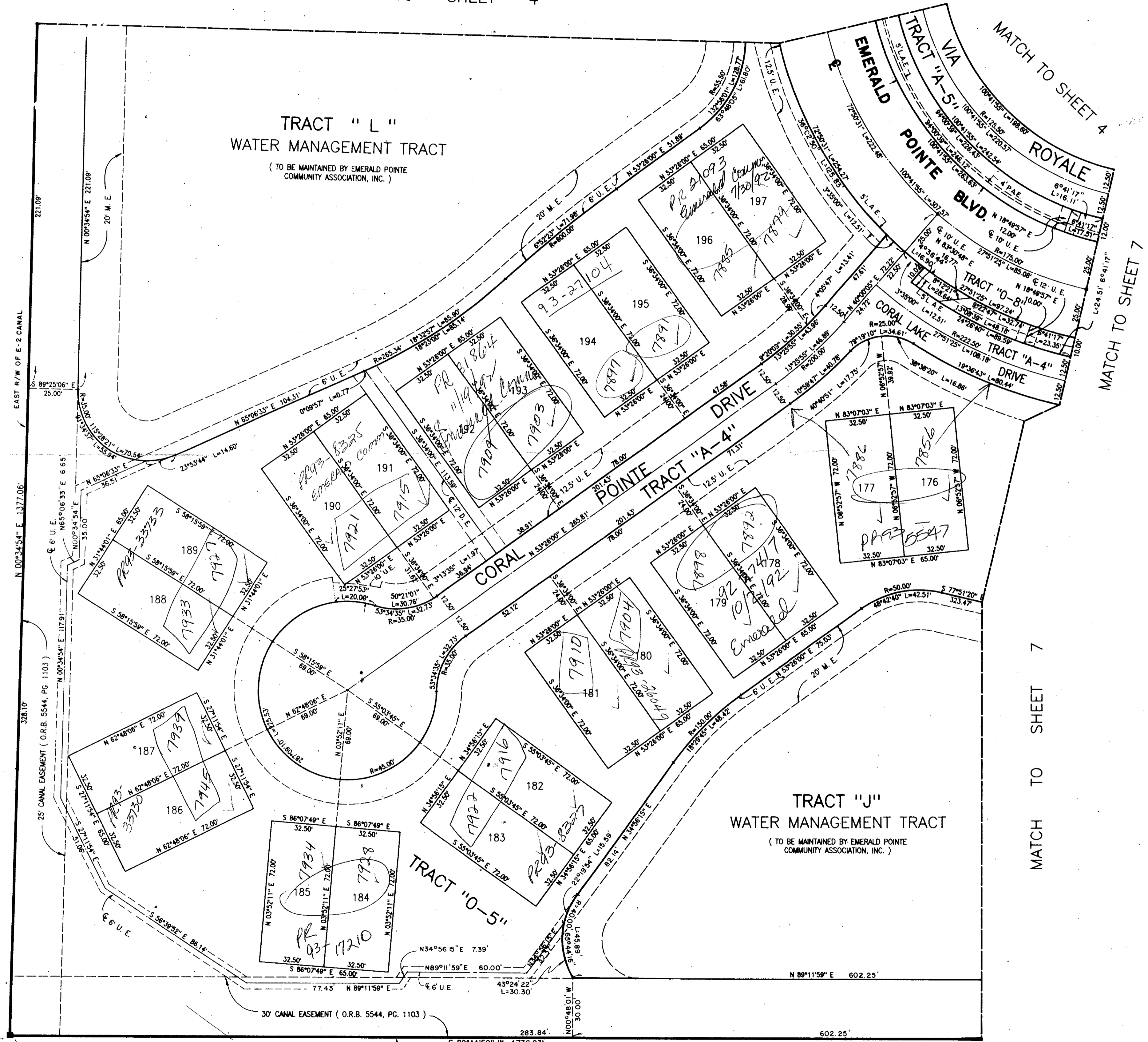
53



STATE OF FLORIDA
 COUNTY OF PALM BEACH
 This Plat was filed for record at
 M. this day of 19
 and duly recorded in Plat Book No.
 on Page
 John B. Dunkle, Clerk of the Circuit Court
 By _____ D.C.

MATCH TO SHEET 4

L.W.D.D. EQUALIZER CANAL 2 (90' RIGHT-OF-WAY)
 (D.B. 113, PG. 582)



MATCH TO SHEET 7

MATCH TO SHEET 7

MATCH TO SHEET 4

TRACT "L"
 WATER MANAGEMENT TRACT
 (TO BE MAINTAINED BY EMERALD POINTE
 COMMUNITY ASSOCIATION, INC.)

TRACT "J"
 WATER MANAGEMENT TRACT
 (TO BE MAINTAINED BY EMERALD POINTE
 COMMUNITY ASSOCIATION, INC.)

Ret. 84-119
 0440-002
 GRAPHIC SCALE 1"=30'

65/53

EMERALD POINTE PLAT NO. 2
 53
 B
 RS
 23446
 51
 84-119

L.W.D.D. LATERAL CANAL 33 (65' RIGHT-OF-WAY)
 (D.B. 113, PG. 595) (D.B. 129, PG. 145)

ADD BY BT
 CHECKED BY

Landmark Surveying & Mapping Inc.
 1850 FOREST HILL BOULEVARD
 PH. (407)433-5405 SUITE 100 W.P.B. FLORIDA

EMERALD POINTE PLAT NO. 2