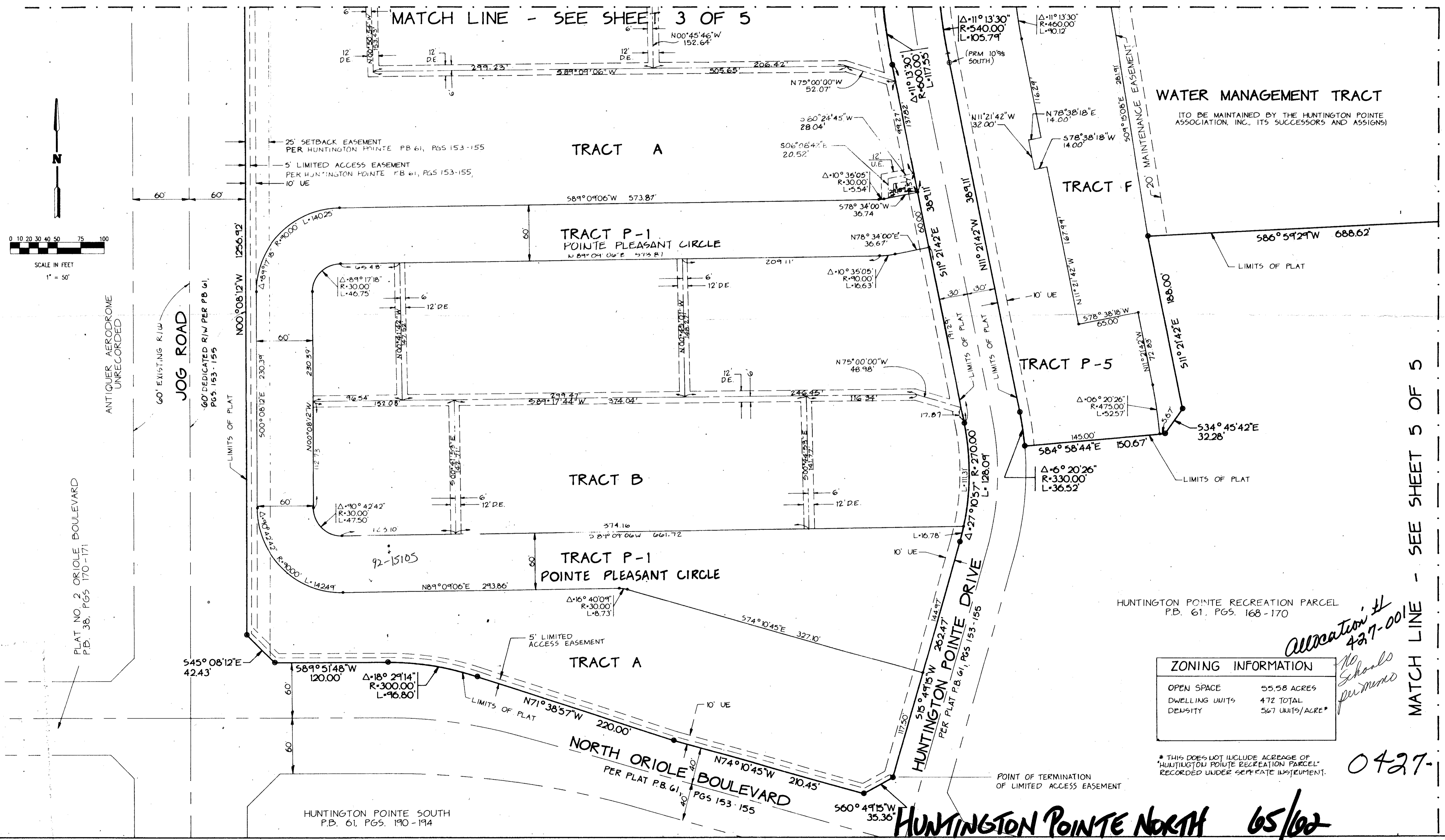
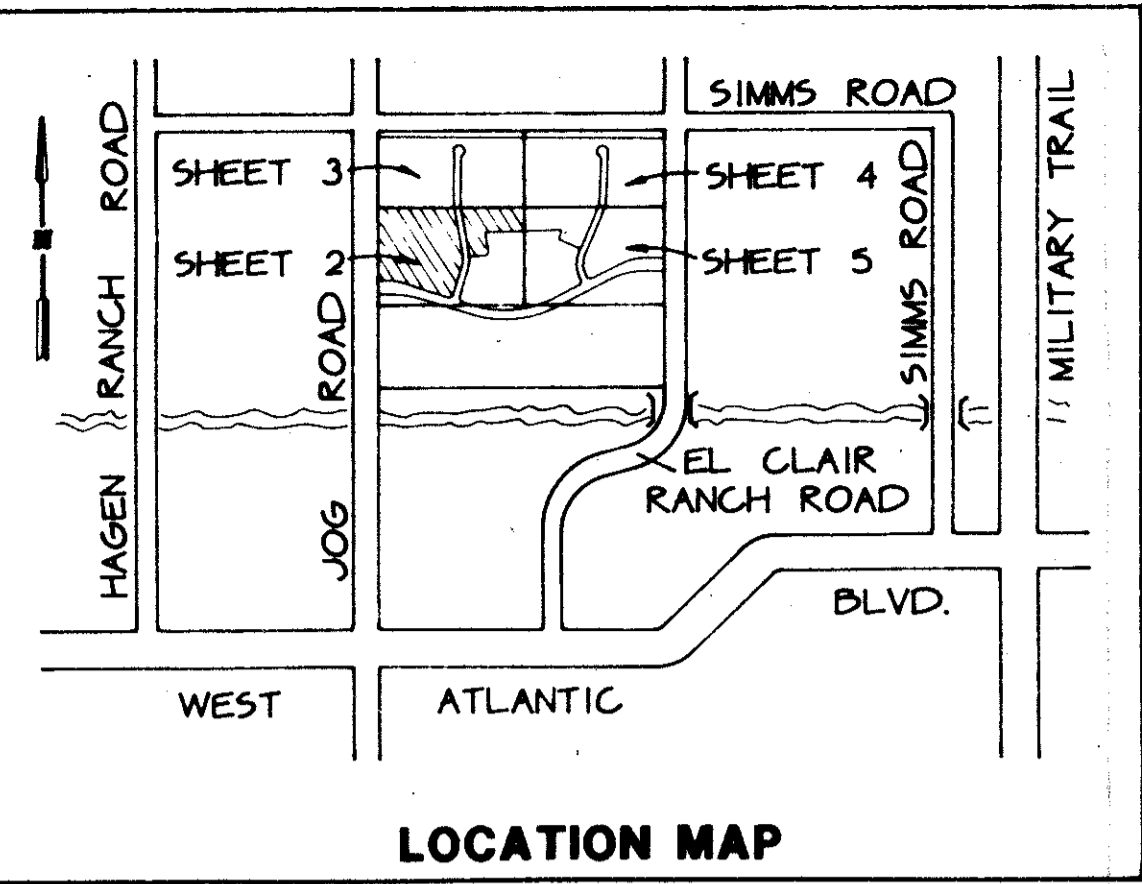


HUNTINGTON POINTE NORTH

A REPLAT OF A PORTION OF TRACT A OF HUNTINGTON POINTE AS RECORDED IN PLAT BOOK 61, PAGES 153 THROUGH 155 OF THE PUBLIC RECORDS OF PALM BEACH COUNTY, FLORIDA IN SECTION 15, TOWNSHIP 46 SOUTH, RANGE 42 EAST PALM BEACH COUNTY, FLORIDA

THIS INSTRUMENT PREPARED BY JAMES E. PARK, P.L.S.
WILLIAMS, HATFIELD & STONER, INC. - ENGINEERS PLANNERS SURVEYORS
1325 SOUTH CONGRESS AVENUE, SUITE 118, BOYNTON BEACH, FLORIDA 33426

SHEET 2 OF 5



ZONING INFORMATION

OPEN SPACE	55.58 ACRES
DWELLING UNITS	472 TOTAL
DENSITY	567 UNITS/ACRE*

* THIS DOES NOT INCLUDE ACREAGE OF HUNTINGTON POINTE RECREATION PARCEL RECORDED UNDER SEPARATE INSTRUMENT.

Allocation to Schools per memo

427-001

MATCH LINE - SEE SHEET 5 OF 5

SECTION 15, TOWNSHIP 46 SOUTH, RANGE 42 EAST

PLAT NO. 65

DATE: 05/11/02

BY: JAMES E. PARK, P.L.S.

WILLIAMS, HATFIELD & STONER, INC.

1325 SOUTH CONGRESS AVENUE, SUITE 118, BOYNTON BEACH, FLORIDA 33426