

STRATHMORE LAKE PLAT, PARCEL A

391-006

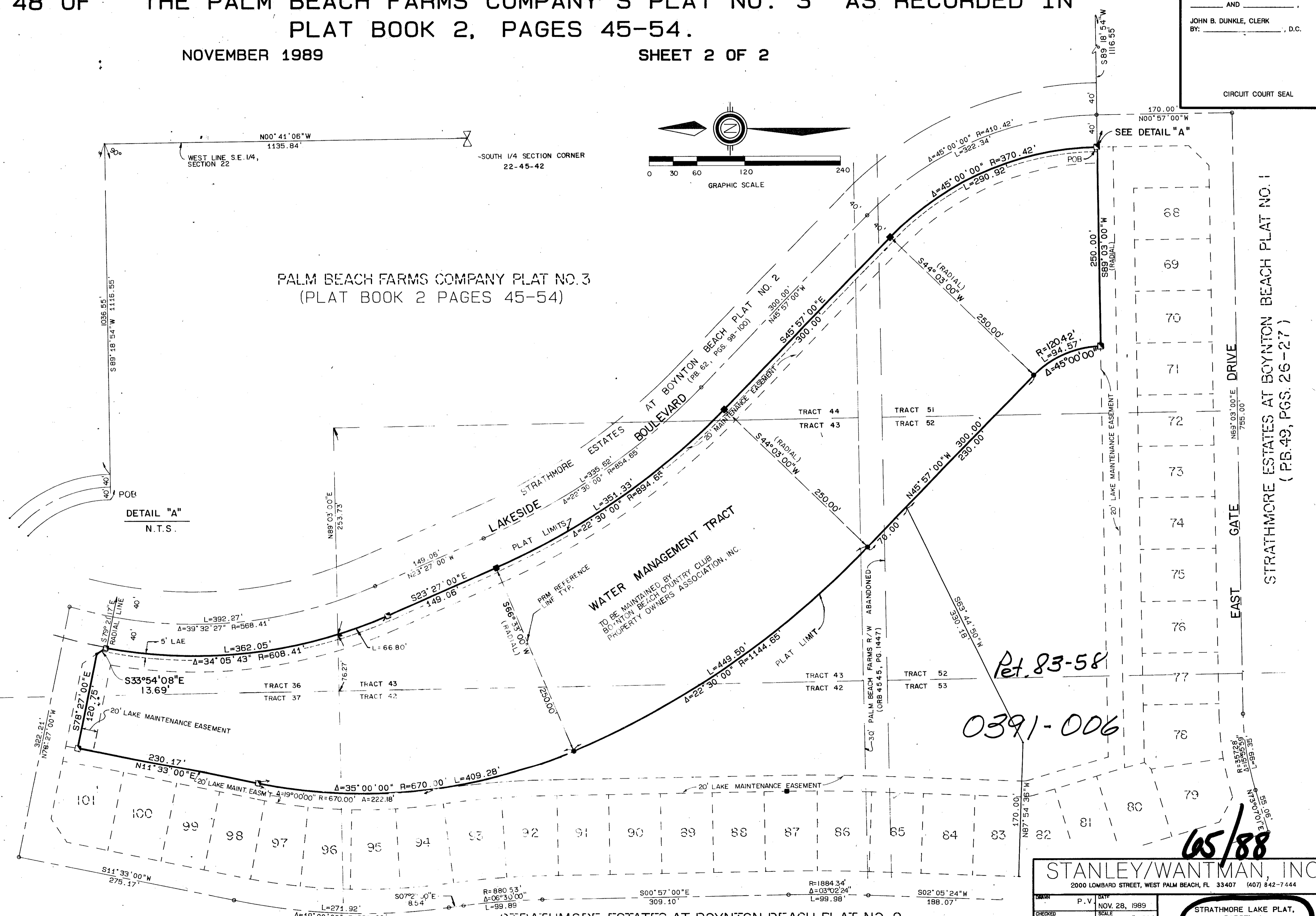
88

PART OF LAKES OF BOYNTON BEACH, A P.U.D. SITUATE IN SECTION 22, TOWNSHIP 45 SOUTH, RANGE 42 EAST, PALM BEACH COUNTY FLORIDA. BEING A REPLAT OF A PORTION OF BLOCK 48 OF "THE PALM BEACH FARMS COMPANY'S PLAT NO. 3" AS RECORDED IN PLAT BOOK 2, PAGES 45-54.

NOVEMBER 1989

SHEET 2 OF 2

STATE OF FLORIDA
COUNTY OF PALM BEACH
THIS PLAT WAS FILED FOR RECORD _____ DAY OF _____ AD, 1989 AND DULY RECORDED IN PLAT BOOK _____ ON PAGES _____ AND _____
JOHN B. DUNKLE, CLERK
BY: _____, D.C.
CIRCUIT COURT SEAL



PALM BEACH FARMS COMPANY PLAT NO. 3
(PLAT BOOK 2 PAGES 45-54)

STRATHMORE ESTATES AT BOYNTON BEACH PLAT NO. 1
(P.B. 49, PGS. 26-27)

Ret. 83-58

0391-006

65/88

ADMISSION TO STRATHMORE LAKE PLAT
BOOK 65 PAGE 88
FILED BOOK 0 PLANO MAP # 185A
DATE 11-30-89 RT
BY 02-54
PUB NAME LAKES OF BOYNTON BEACH

STANLEY/WANTAM, INC.
2000 LOMBARD STREET, WEST PALM BEACH, FL 33407 (407) 842-7444

DESIGN	P.V.	DATE	NOV. 28, 1989
CHECKED	R.B.P.	SCALE	1"=60'
DRAWING NO.	D14-10088	RE:	83-126C

STRATHMORE LAKE PLAT, PARCEL A
SHEET 2 OF 2