

Abbey Park Plat No. 5

State of Florida)
 County of Palm Beach) ss
 This Plat was filed for record at
 this day of
 A.D. 1988, and duly recorded
 in Plat Book and on
 Page and
 John B. Dunkle,
 Clerk of the Circuit Court.
 By: Deputy Clerk



0' 30' 60' 120'
 Graphic Scale In Feet: 1"=30'

-Unplatted-

Pt. 79-161

0.190-005

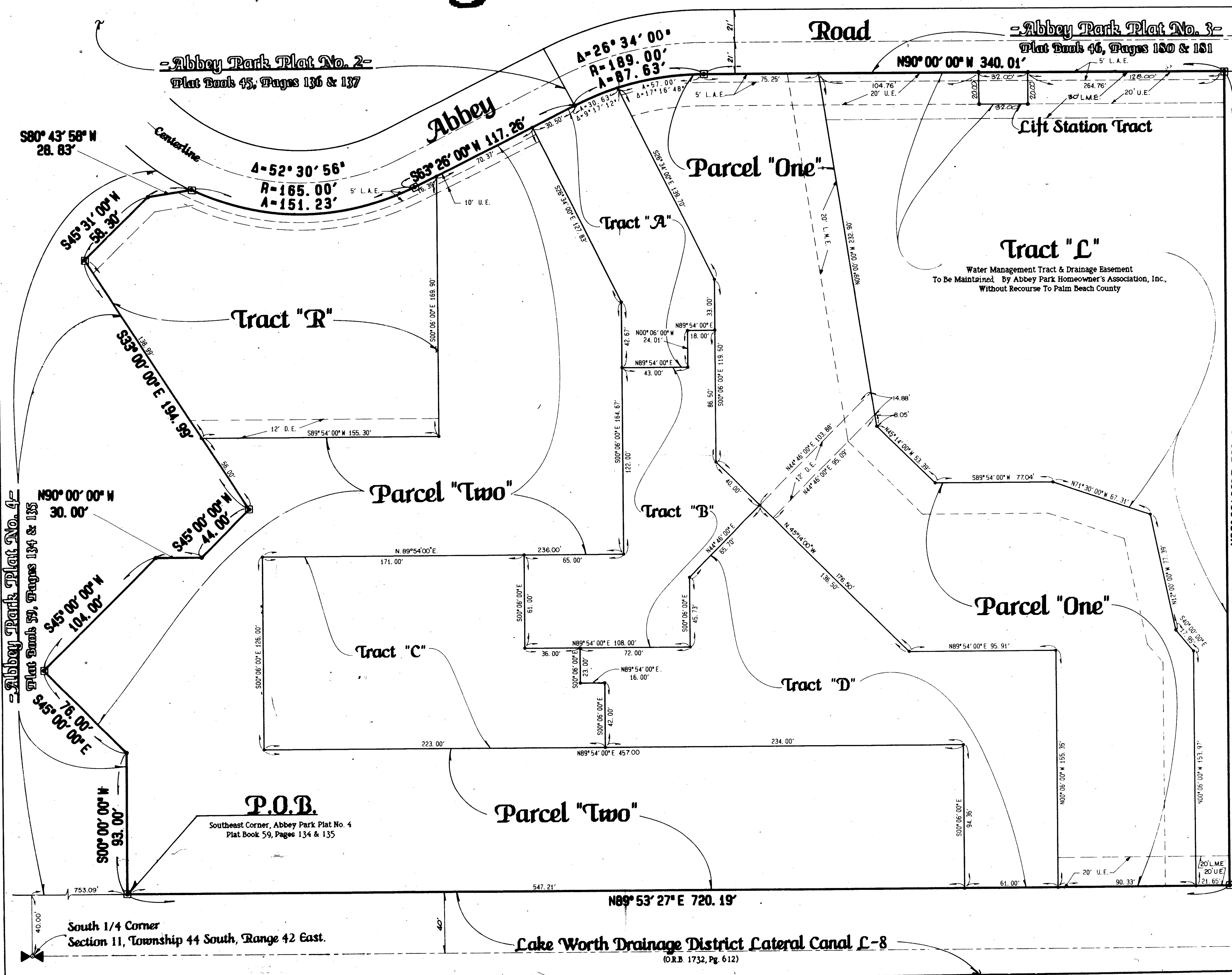
Legend:
 L.A.E. Indicates A Limited Access Easement
 L.M.E. Indicates A Lake Maintenance Easement
 D.E. Indicates A Drainage Easement
 U.E. Indicates A Utility Easement
 □ Indicates A Permanent Reference Point
 ○ Indicates A Permanent Point

This instrument was prepared by Wm. R. Van Campen, R.L.S.,
 in and for the offices of Bench Mark Land Surveying & Mapping,
 Inc. 4152 W. Blue Heron Boulevard, Suite 121, Riviera Beach, FL.

BENCH MARK
 LAND SURVEYING & MAPPING, INC.
 WEST PALM BEACH, FLORIDA RIVIERA BEACH, FLORIDA

Record Plat
Abbey Park Plat No. 5

OWN BDB	CRD WVC	DATE 2/89	WD. NO. P2700
SCALE 1"=30'	SIZE L	FR P	SHEET 2 OF 2



SUBDIVISION ABBEY PARK PLAT NO. 5
 PAGE 90
 FLOOD MAP #165A
 ZONING RM
 20-0000-32
 79-161
 20-0000-33415
 ABBEY PARK

Abbey Park Plat No. 4
 Plat Book 59, Pages 134 & 135

Abbey Park Plat No. 2
 Plat Book 45, Pages 136 & 137

Abbey Park Plat No. 3
 Plat Book 46, Pages 150 & 151

P.O.B.
 Southeast Corner, Abbey Park Plat No. 4
 Plat Book 59, Pages 134 & 135

South 1/4 Corner
 Section 11, Township 44 South, Range 42 East.

Lake Worth Drainage District Lateral Canal L-8
 (O.R.B. 1732, Pg. 612)