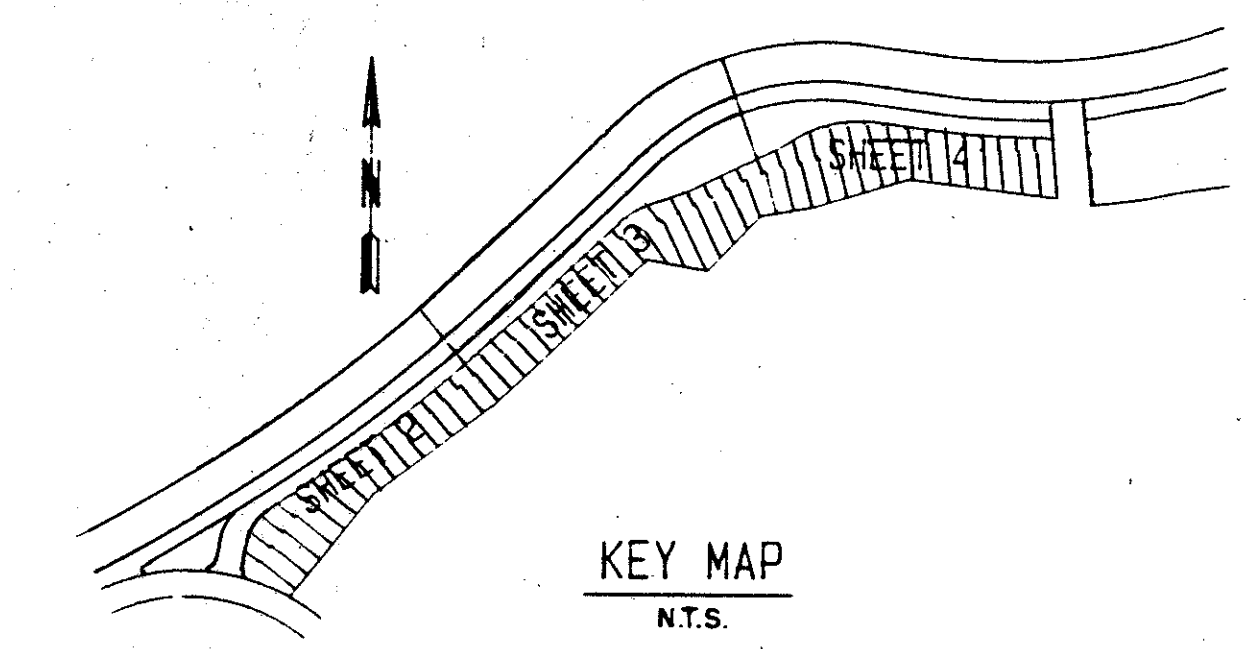
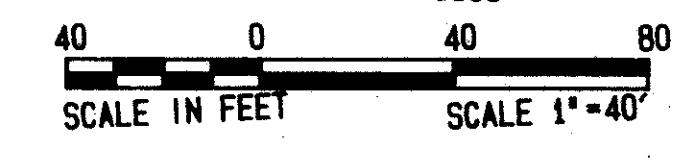


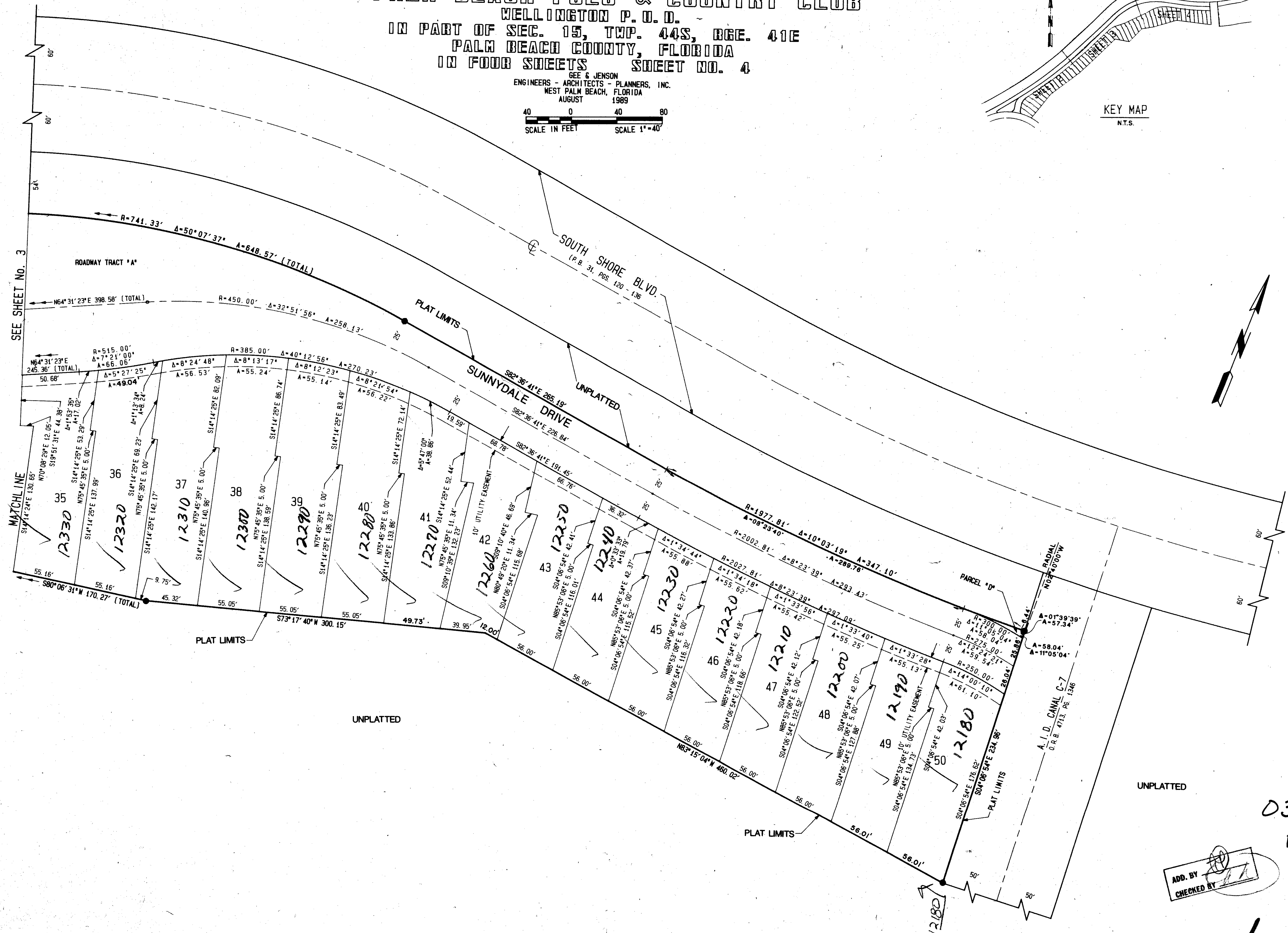
HUNTERS CHASE OF PALM BEACH POLO & COUNTRY CLUB

WELLINGTON P. O. D.
IN PART OF SEC. 15, TWP. 44S, RGE. 41E
PALM BEACH COUNTY, FLORIDA
IN FOUR SHEETS SHEET NO. 4

GEE & JENSON
ENGINEERS - ARCHITECTS - PLANNERS, INC.
WEST PALM BEACH, FLORIDA
AUGUST 1989



STATE OF FLORIDA
COUNTY OF PALM BEACH
This plat was filed for
record at _____ M. this _____ day
of _____ 1990, and duly
recorded in Plat Book No. _____
on Pages _____ thru _____
JOHN B. DUNKLE
Clerk Circuit Court
By: _____ D. C.



HUNTERS CHASE OF PALM BEACH
SUBDIVISION & POLO & CC
BOOK 655 PAGE 168
FLOOD MAP # 1008
ZONING AIR
QUAD # 62
SE 20-52
PUD NAME WELLINGTON P.U.D.

COMPUTED D. W. LEI
DRAWN M. R. JONES
CHECKED D.B.
APPROVED [Signature]
REVISION

JOB NO. 89-297

HUNTERS CHASE OF P.B. POLO & C.C. 65/168

0332-087
Pt. 86-32

ADD. BY [Signature]
CHECKED BY [Signature]

TAB 728