

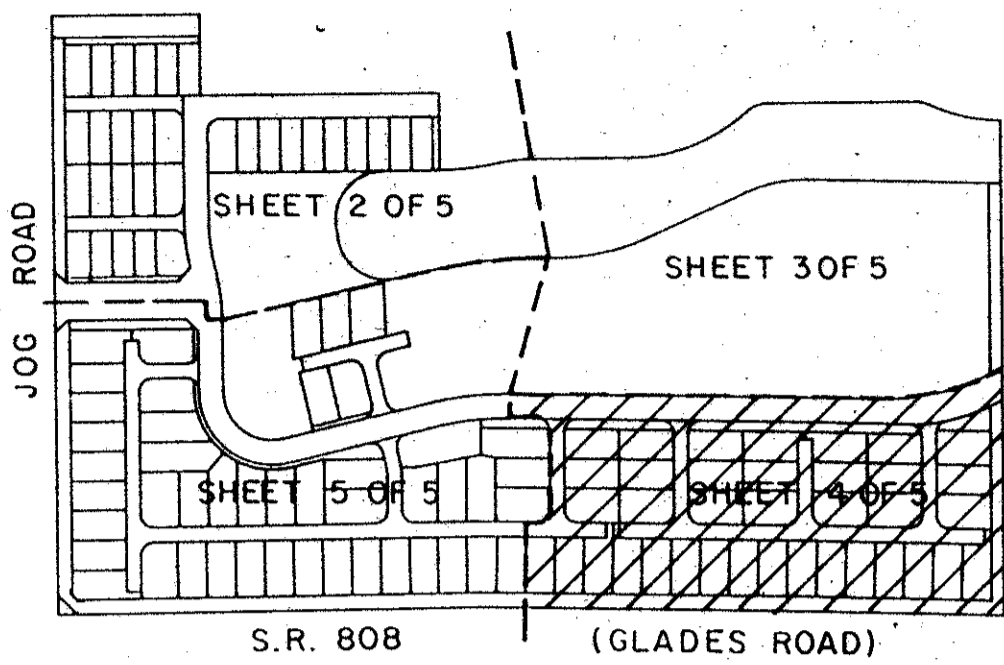
# GLADES LANDING PLAT TWO

175

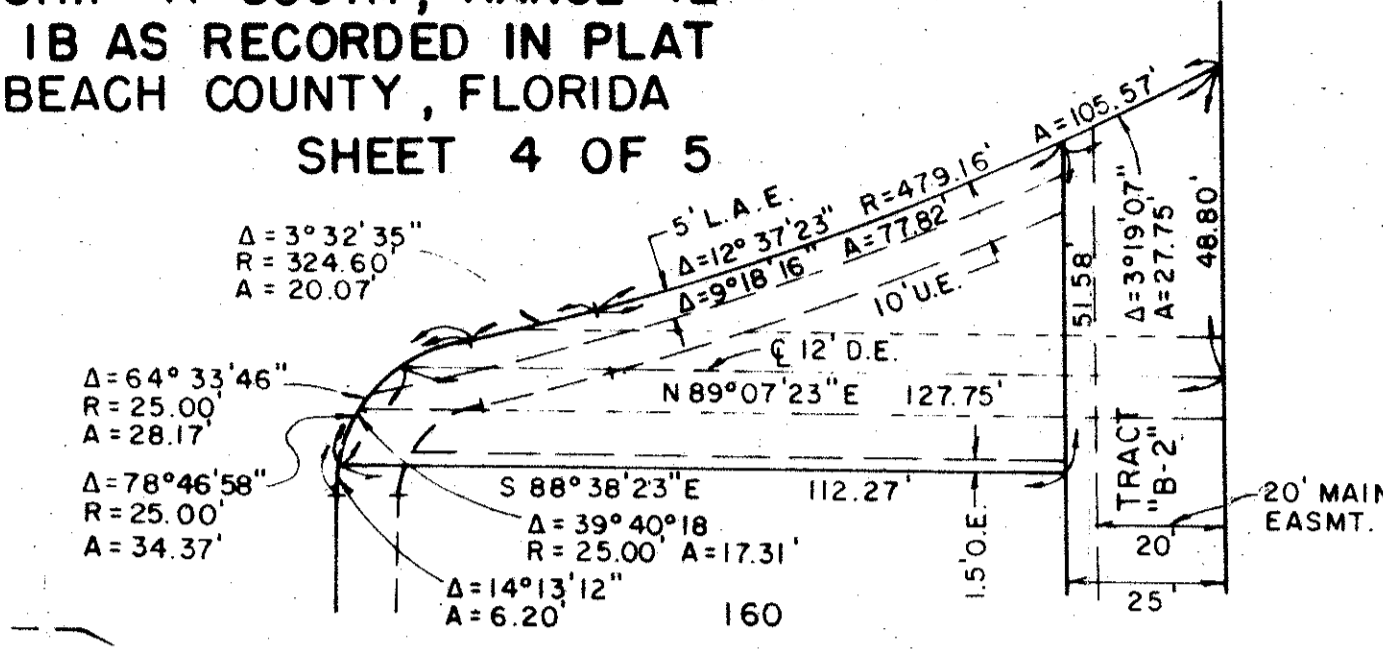
## A PLANNED UNIT DEVELOPMENT

BEING A PLAT OF A PORTION OF THE S.E. 1/4 OF SECTION 15, TOWNSHIP 47 SOUTH, RANGE 42 EAST AND A REPLAT OF A PORTION OF GLADES LANDING PHASE 1B AS RECORDED IN PLAT BOOK 63, PAGES 200 AND 201 OF THE PUBLIC RECORDS OF PALM BEACH COUNTY, FLORIDA  
 JANUARY, 1990

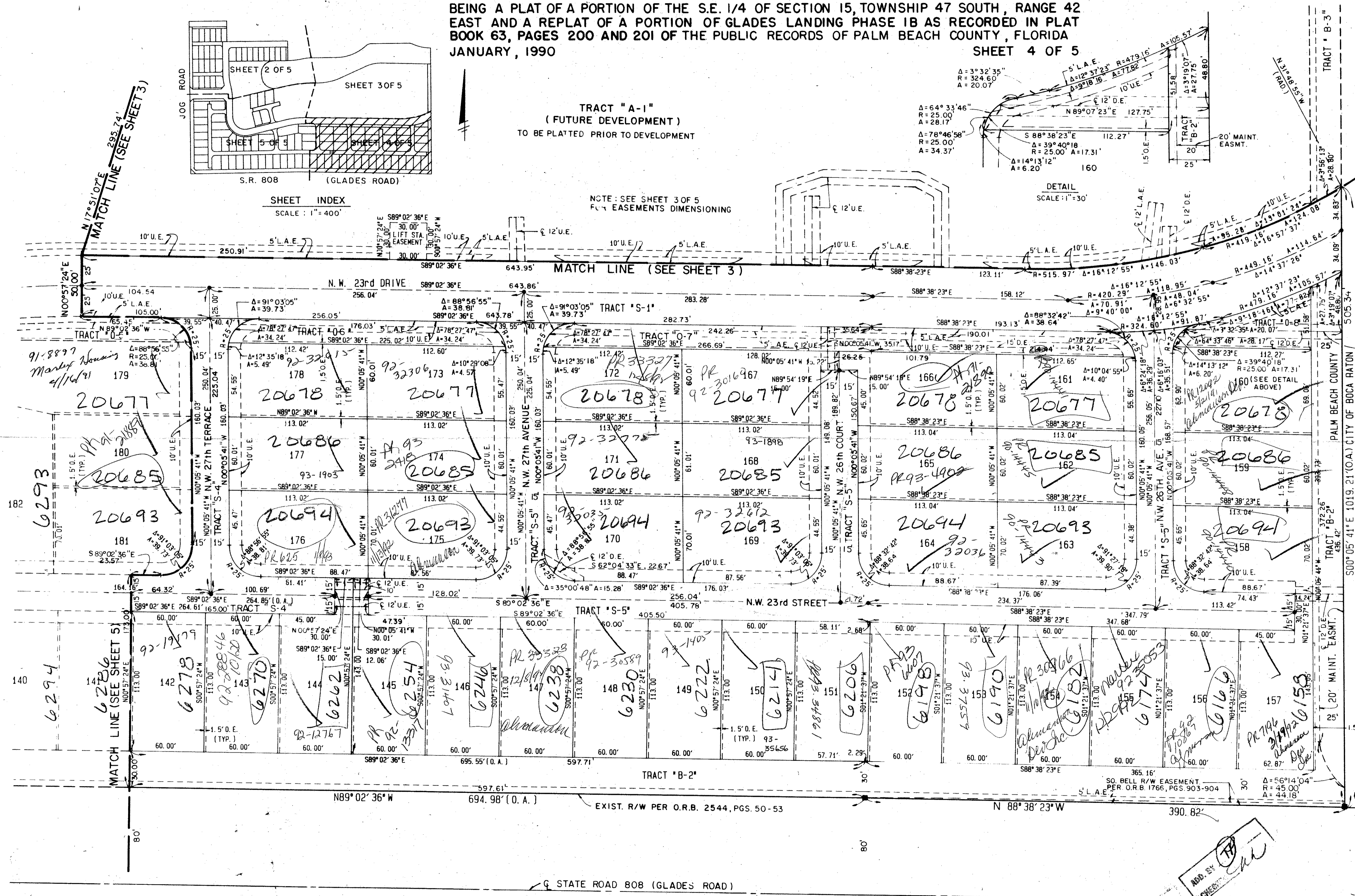
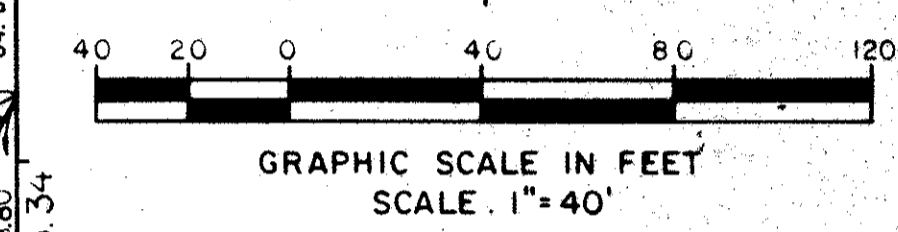
SHEET 4 OF 5



TRACT "A-1"  
 (FUTURE DEVELOPMENT)  
 TO BE PLATTED PRIOR TO DEVELOPMENT



NOTE: SEE SHEET 3 OF 5 FOR EASEMENTS DIMENSIONING



SECTION: GLADES LANDING PLAT 2  
 BOOK 65 PAGE 175  
 PLAT NO. B  
 C.I.D. #38  
 S.E. 84-38  
 P.D. NAME SAME

0734-002  
 Plat 84-38

65/175

METRIC ENGINEERING INC.  
 ENGINEERS - PLANNERS - SURVEYORS  
 MIAMI - FORT LAUDERDALE  
 WEST PALM BEACH - PANAMA CITY

D.L.G.  
 C.A.D.D.  
 D.R.

PLAT TWO  
 GLADES LANDING  
 SHEET 4 OF 5