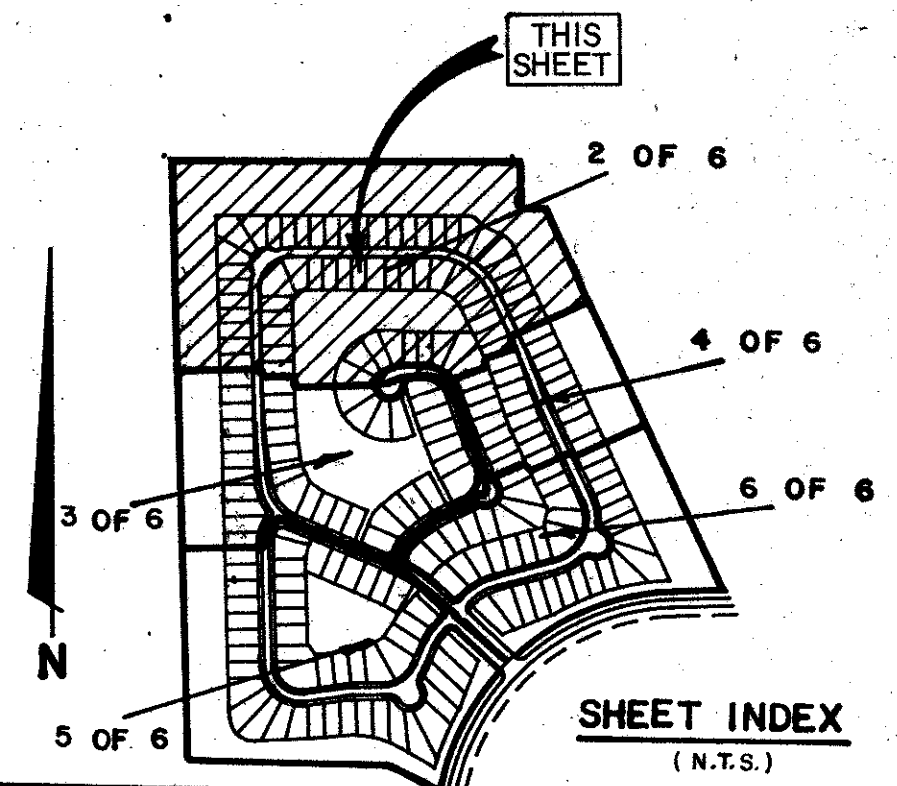


# BOCA CHASE 9A

A PORTION OF BOCA CHASE RIVIERA P.U.D.  
BEING A PORTION OF THE NORTHEAST 1/4 OF SECTION 2,  
TOWNSHIP 47 SOUTH, RANGE 41 EAST, PALM BEACH COUNTY, FLORIDA

PREPARED BY:  
**CARLTON / ROBAYNA INC.**  
ENGINEERS PLANNERS SURVEYORS  
MARCH 1989 GRAPHIC SCALE SHEET 2 OF 6



STATE OF FLORIDA  
COUNTY OF PALM BEACH  
THIS PLAT WAS FILED FOR  
RECORD AT  
THIS DAY OF  
A.D. 1990 AND DULY RECORDED  
IN PLAT BOOK ON PAGES  
AND  
**JOHN B. DUNKLE,**  
BY: DC

P.O.B. LIMITS OF PLAT  
N.W. COR., N.E. 1/4  
SEC. 2, TWP. 47S, R. 41E.

STONEBRIDGE  
R.R. 63 PG 38  
NORTH LINE OF THE NE 1/4 OF SECTION 2, TWP. 47 S., RGE. 41E.  
SCALE: 1" = 40'  
589°04'43"E 1090.00'

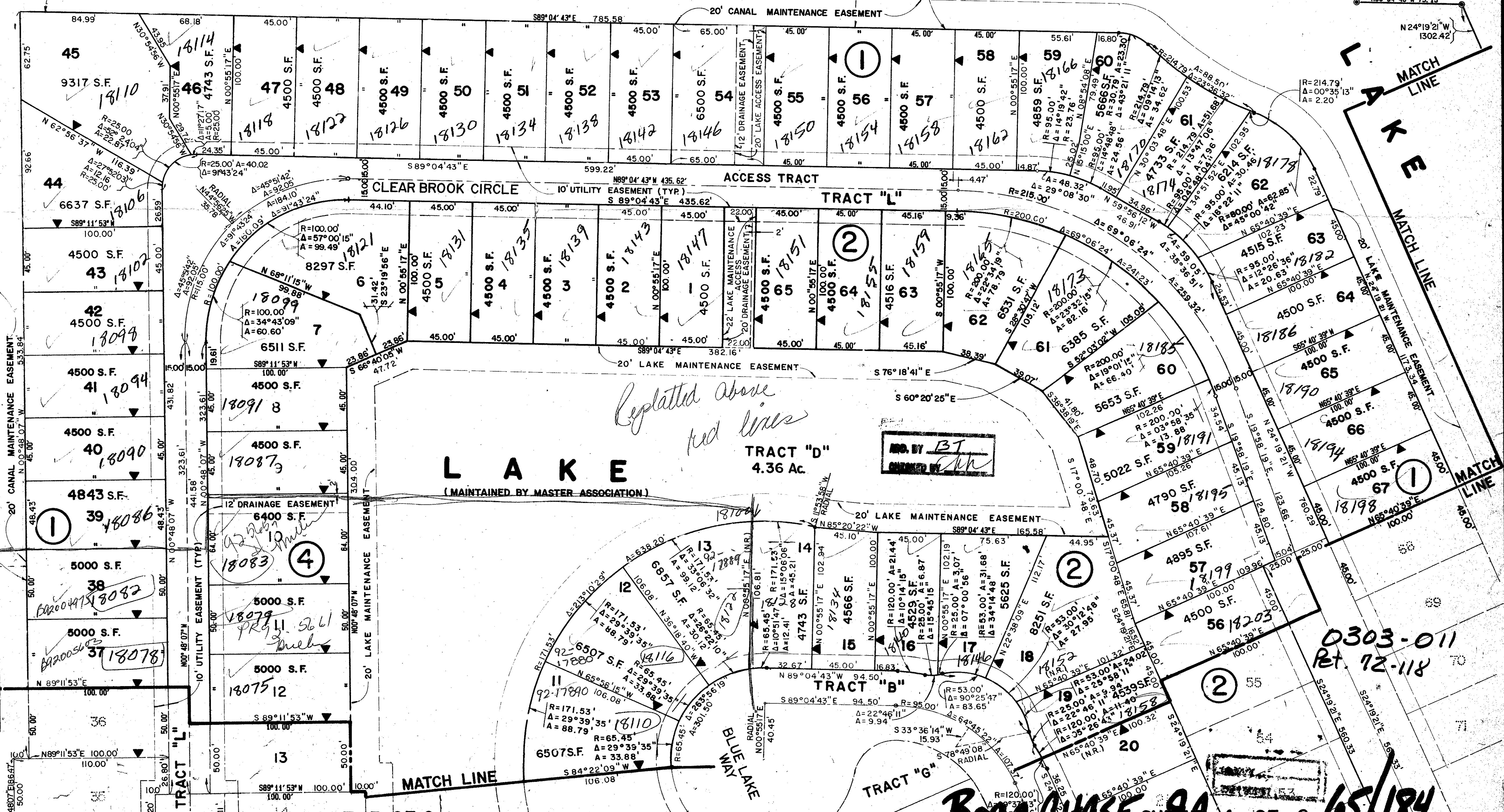
LAKE WORTH DRAINAGE DISTRICT CANAL N° L-40

TRACT "F" CANAL

CANAL

TRACT "F"  
13.84 Ac.

*Replatted as  
Boca Chase 9A Replat  
Blks. 5, 6, 7*



*Replatted above  
red lines*

MD. BY BT  
[Signature]

SUBDIVISION: Boca Chase 9A  
BOOK: 65  
FLOOD ZONE: A-1  
QUAD: 68  
SE  
ZIP CODE: 33434  
PUD NAME: BOCA CHASE - RIVIERA P.U.D.

UNPLATTED  
S. 00° 48' 07" E 1837.67'  
West line of the NE 1/4 of Sec. 2-47-41  
1807.67'

11502

0303-011  
RET. 72-118