

# BOCA CHASE 9A

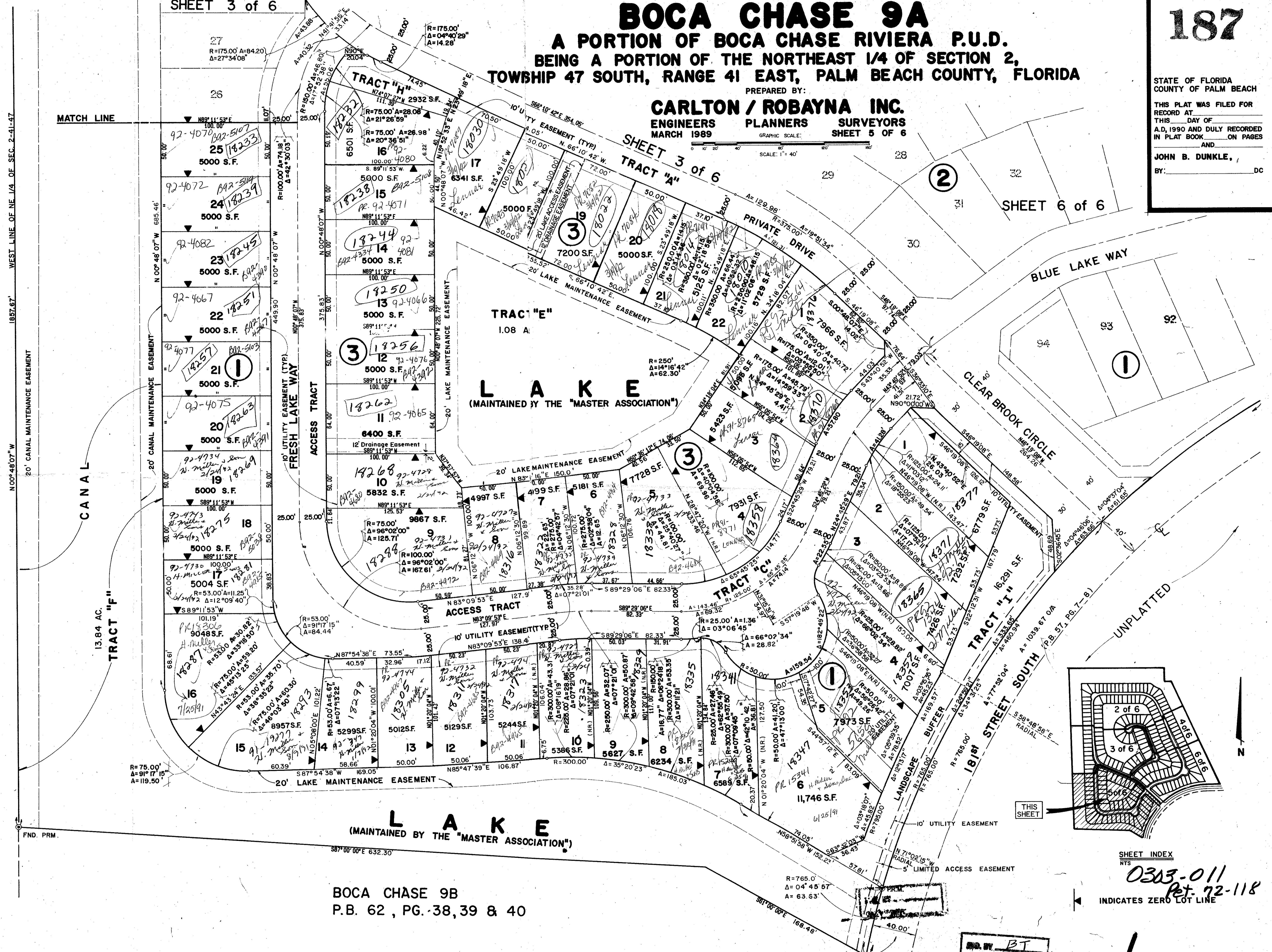
A PORTION OF BOCA CHASE RIVIERA P.U.D.  
BEING A PORTION OF THE NORTHEAST 1/4 OF SECTION 2,  
TOWNSHIP 47 SOUTH, RANGE 41 EAST, PALM BEACH COUNTY, FLORIDA

PREPARED BY:  
**CARLTON / ROBAYNA INC.**  
ENGINEERS PLANNERS SURVEYORS  
MARCH 1989 GRAPHIC SCALE: SHEET 5 OF 6

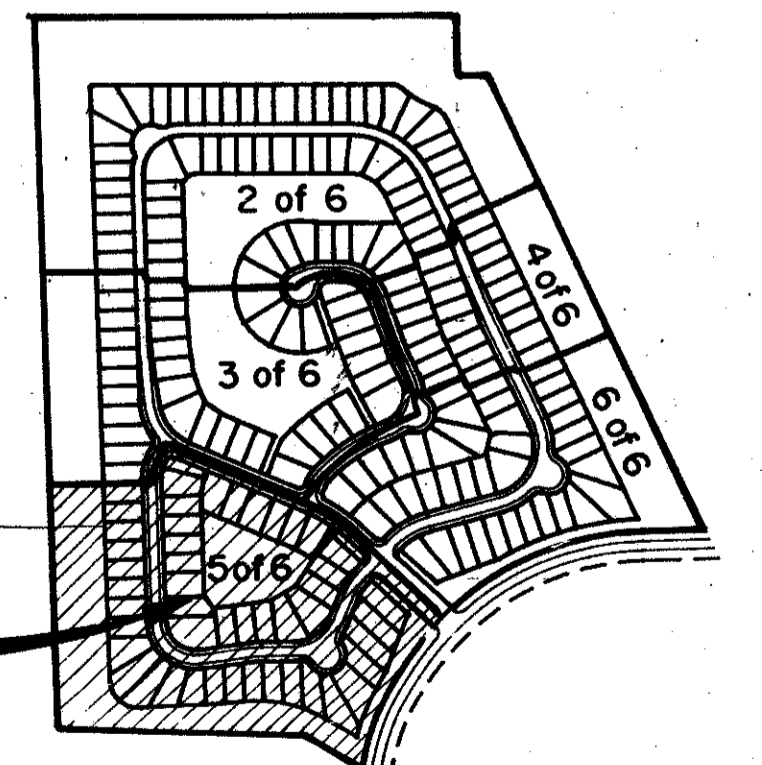
STATE OF FLORIDA  
COUNTY OF PALM BEACH  
THIS PLAT WAS FILED FOR  
RECORD AT  
THIS DAY OF  
A.D. 1990 AND DULY RECORDED  
IN PLAT BOOK ON PAGES  
AND  
JOHN B. DUNKLE,  
BY: DC

BOCA CHASE 9A  
BOOK 65 PAGE 187  
FLOOD ZONE MAP 1/28/88  
QUAD 68  
SE  
BOCA CHASE 9A - Riviera P.U.D.

UNPLATTED



BOCA CHASE 9B  
P.B. 62, PG. 38, 39 & 40



SHEET INDEX  
0303-011  
Pet. 72-118  
INDICATES ZERO LOT LINE

BOCA CHASE 9A

105/187

BT