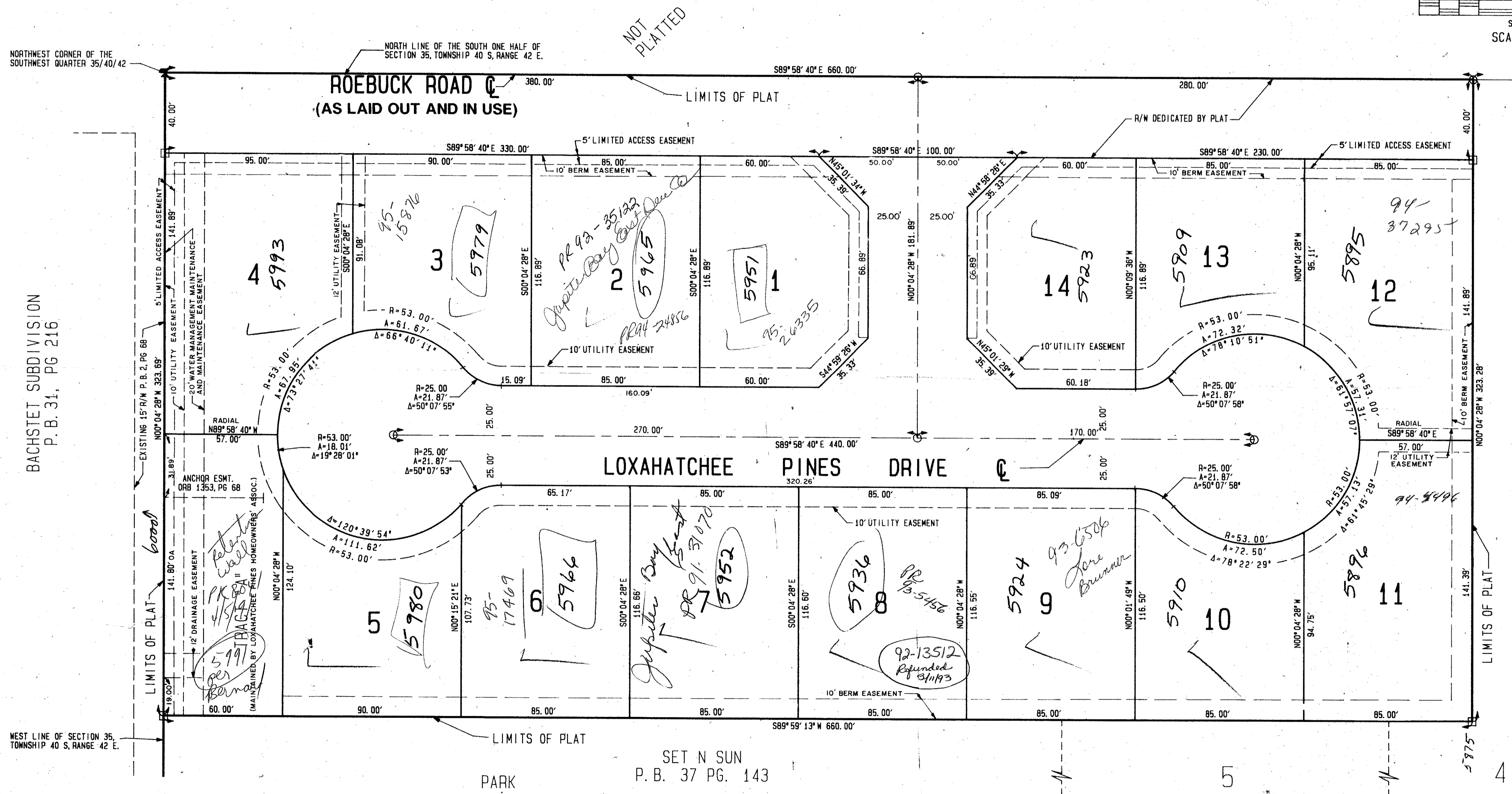
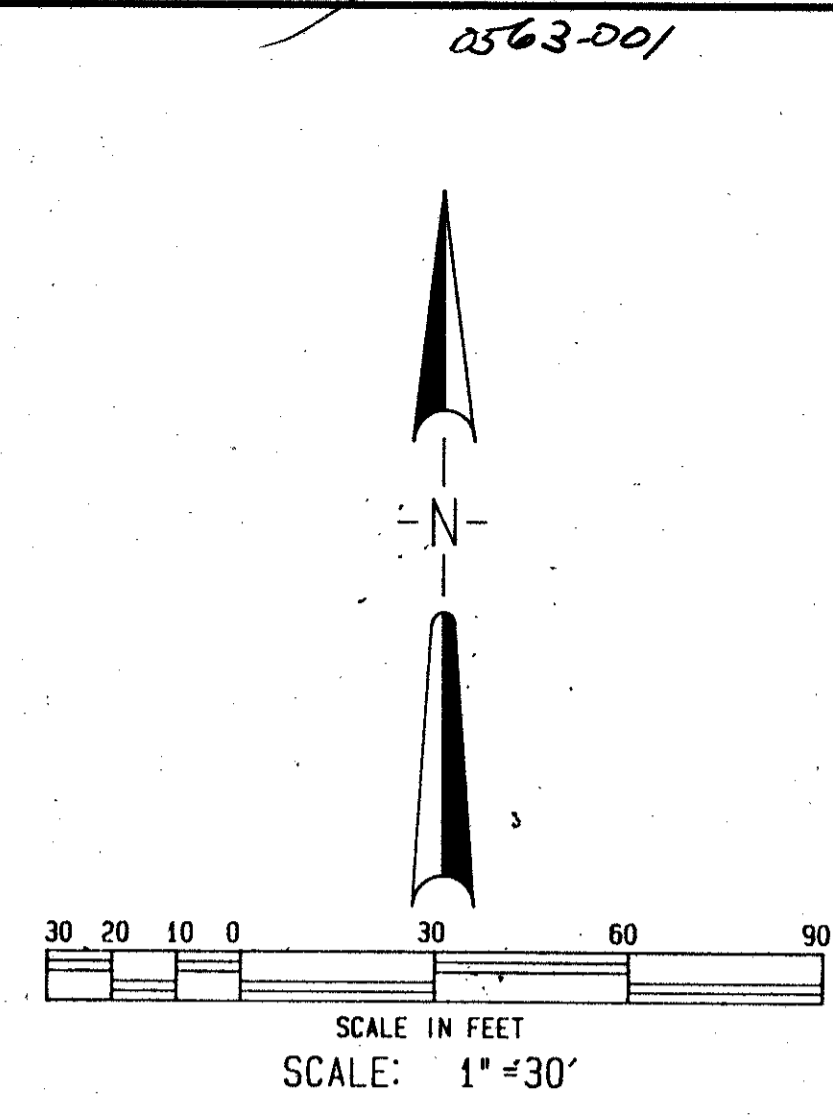


# PLAT OF LOXAHATCHEE PINES

BEING A PORTION OF SECTION 35, TOWNSHIP 40 SOUTH RANGE 42 EAST, PALM BEACH COUNTY, FLORIDA.

JANUARY, 1990

2



Subdivision: Loxahatchee Pines  
 Book: 66  
 Page: 2  
 Flood Map: 1066  
 Zoning: RS  
 Road: 35  
 Zip Code: 33458  
 Date: 3/14/92  
 TAZ: 17

THIS INSTRUMENT WAS PREPARED BY GEORGE ZIGLIANI P. L. S. AT THE OFFICE OF ADVANCED CONSTRUCTION SERVICES INC. 1001 ALT. A. I. A. JUPITER, FL 33477

PLAT OF LOXAHATCHEE PINES

		<b>ADVANCED CONSTRUCTION SERVICES INC</b> 1001 Alt. A.I.A. Jupiter, Fl 33477 407/746-8215	
NO.	DATE	DESCRIPTION	BY
2	8-25-89	REV. PER ENCON, NPBCWCD, & PBCLD	M.H.C.
1	4-24-89	REV. CUL-DE-SAC & LIM. ACCESS EASEM.	C.P.
REVISIONS			
DRAWN C. P. / DISCAD	FIELD BOOK NO.	DATE JULY, 1988	JOB NO. 88002
DESIGNED S. C. Z.	CHECKED S. C. Z.	SCALE 1" = 30'	SHEET 2 of 2

ADD. BY *[Signature]*  
 CHECKED BY *[Signature]*

0563-001  
 66/2