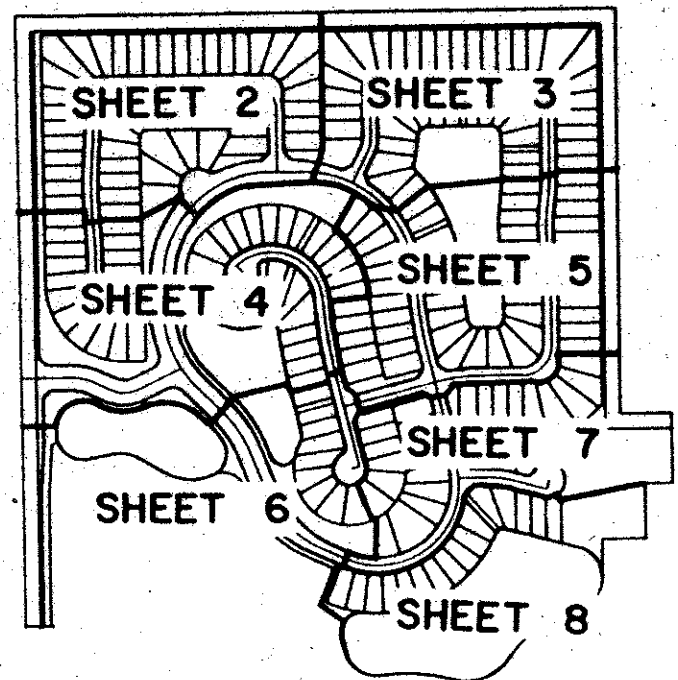


# GARDEN OAKS PLAT 1

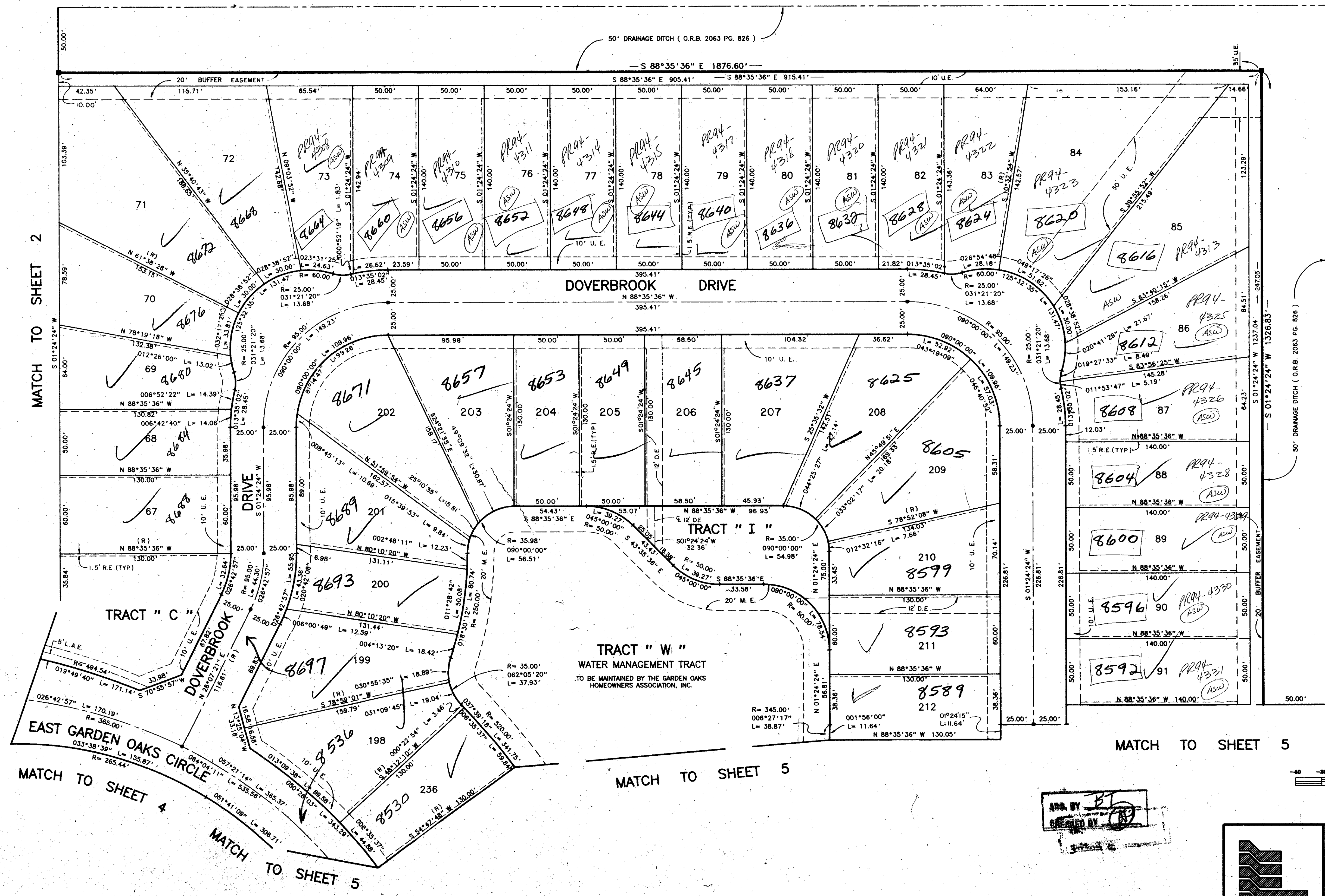
A PLANNED UNIT DEVELOPMENT  
BEING A PORTION OF GARDEN OAKS PLANNED UNIT DEVELOPMENT LYING IN  
SECTION 24, TOWNSHIP 42 SOUTH, RANGE 42 EAST, PALM BEACH COUNTY, FLORIDA.  
SHEET 3 OF 8  
MAY, 1990.



KEY MAP  
NTS

NICHOLAS PARK  
(UNRECORDED)

STATE OF FLORIDA  
COUNTY OF PALM BEACH  
This Plat was filed for record at \_\_\_\_\_  
M. this \_\_\_\_\_ day of \_\_\_\_\_ 19\_\_\_\_  
and duly recorded in Plat Book No. \_\_\_\_\_  
on Page \_\_\_\_\_  
John B. Dunkle, Clerk of the Circuit Court  
By \_\_\_\_\_ D.C.



MATCH TO SHEET 2

MATCH TO SHEET 4

MATCH TO SHEET 5

MATCH TO SHEET 5

MATCH TO SHEET 5

F.J.GEUELE SUBDIVISION  
(UNRECORDED)

Scale 1" = 40'

66/10

Landmark Surveying & Mapping Inc.  
1850 FOREST HILL BOULEVARD  
PH. (407)433-5405 SUITE 100 W.P.B. FLORIDA

GARDEN OAKS PLAT 1

SUBDIVISION \* Dutch Oak & May  
BOOK 66  
PAGE 10  
FLOOD MAP # 10B  
ZONING RM  
QUAD 29  
SE 89-15  
PUD NAME  
MAY 24/1990

TAZ 10B

0578-001  
Pet. 89-15

APPROVED BY  
CREATED BY