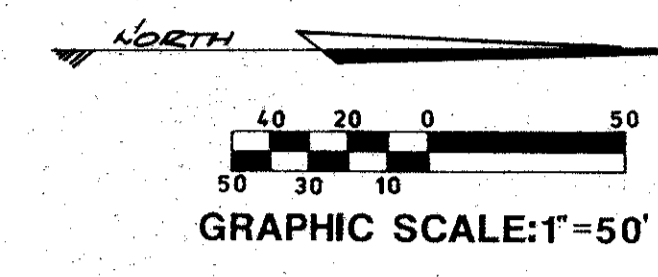
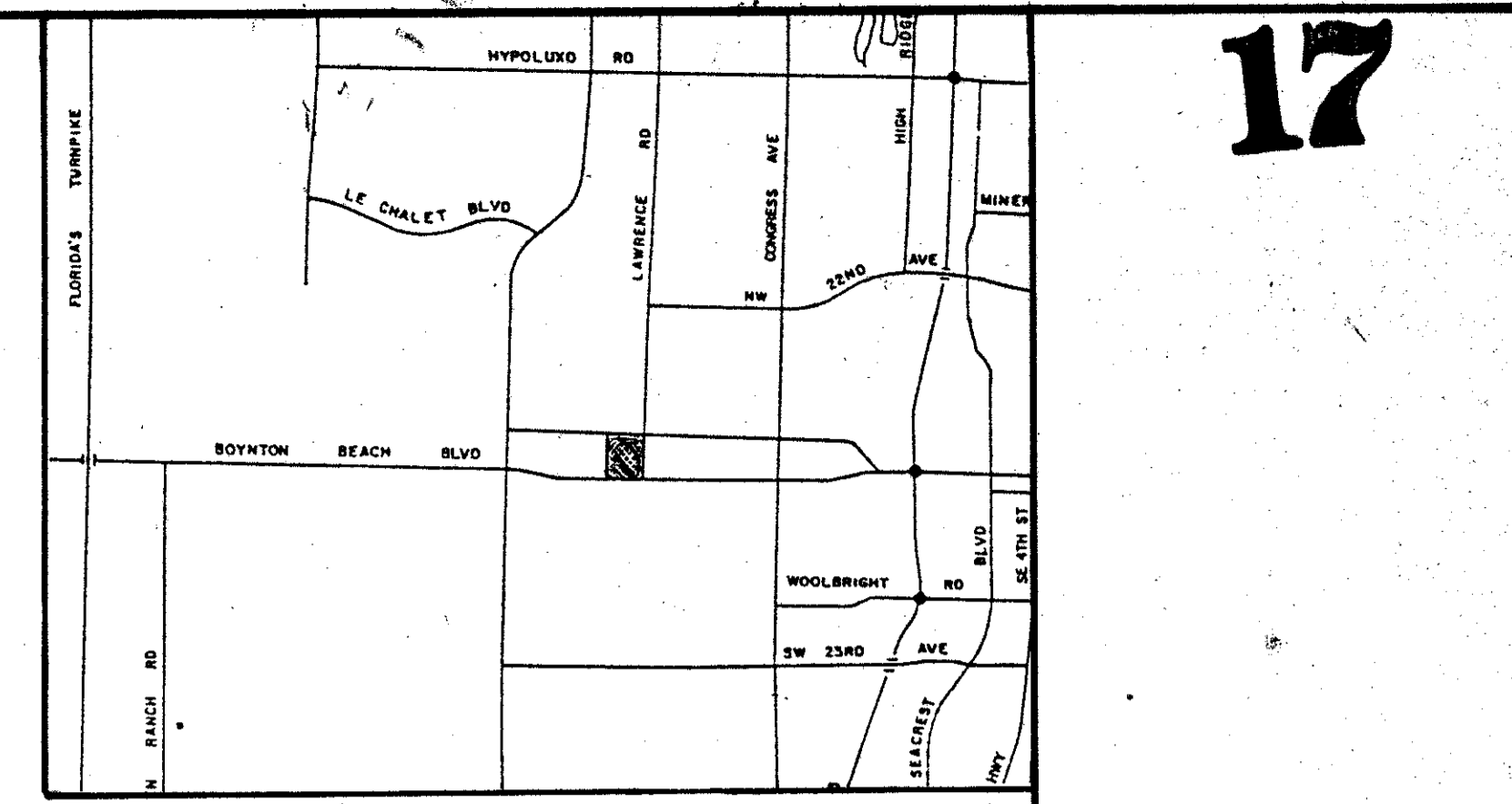


- NOTES AND RESTRICTIONS
1. BEARINGS CITED HEREON ARE IN MERIDIAN ASSUMING NORTH 00°15'10" WEST ALONG THE EAST LINE OF SECTION 24, TOWNSHIP 45 SOUTH, RANGE 42 EAST, PALM BEACH COUNTY, FLORIDA.
  2. □ DENOTES PERMANENT REFERENCE MONUMENT.
  3. THERE SHALL BE NO BUILDINGS OR ANY KIND OF CONSTRUCTION PLACED ON UTILITY OR DRAINAGE EASEMENTS.
  4. THERE SHALL BE NO TREES OR SHRUBS PLACED ON UTILITY EASEMENTS WHICH ARE PROVIDED FOR WATER AND SEWER USE OR UPON DRAINAGE EASEMENTS. LANDSCAPING OR OTHER UTILITY EASEMENTS SHALL BE ALLOWED ONLY AFTER CONSENT OF ALL UTILITY COMPANIES OCCUPYING SAME.
  5. IN INSTANCES WHERE DRAINAGE AND UTILITY EASEMENTS INTERSECT, THOSE AREAS OF INTERSECTION AND DRAINAGE AND UTILITY EASEMENTS, CONSTRUCTION, OPERATION AND MAINTENANCE OF UTILITIES WITHIN THESE AREAS OF INTERSECTION SHALL NOT INTERFERE WITH THE CONSTRUCTION, OPERATION AND MAINTENANCE OF DRAINAGE FACILITIES.
  6. BUILDING SETBACK LINES SHALL BE AS REQUIRED BY CURRENT PALM BEACH COUNTY ZONING REGULATIONS AND/OR ANY RESTRICTIVE COVENANTS PERTAINING TO THAT PORTION OF THE PLANNED UNIT DEVELOPMENT REFLECTED BY THIS PLAT.
  7. NOTE: THERE MAY BE ADDITIONAL RESTRICTION NOTE RECORDED ON THIS PLAT THAT MAY BE FOUND IN THE PUBLIC RECORDS OF THIS COUNTY.

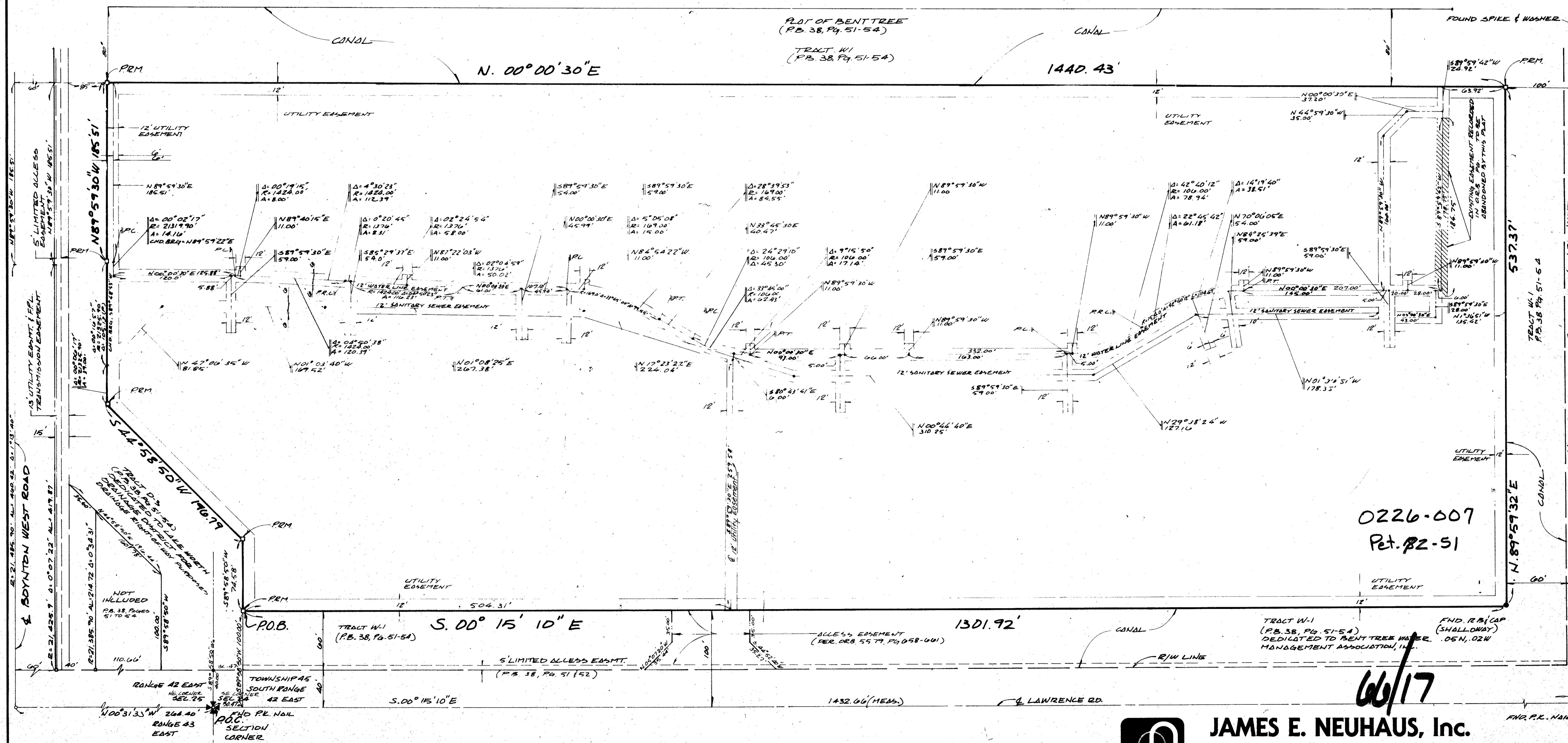


A PART OF COUNTRY CLUB TRAILS, P.U.D.  
**PLAT OF**  
**ISLAND REACH APARTMENTS**

IN SECTIONS 24 AND 25, TOWNSHIP 45 SOUTH, RANGE 42 EAST PALM BEACH COUNTY, FLORIDA  
 BEING A REPLAT, IN PART, PAGES 71 AND 72 OF THE REPLAT OF BENT TREE GARDENS  
 AS SAME IS SHOWN AND RECORDED IN PLAT BOOK 40, PAGES 71, 72, AND 73  
 SHEET NO. TWO OF TWO SHEETS  
 1989



**NOTE:**  
 PERMANENT REFERENCE MONUMENTS ARE DESIGNATED THUS □

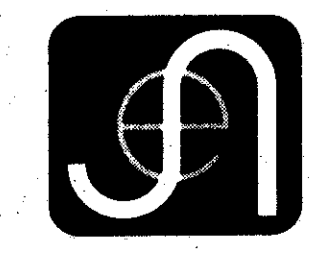


SUBDIVISION *Island Reach*  
 BOOK 66 PAGE 17  
 FLOOD ZONE B FLOOD MAP # P008  
 QUAD # 35 ZONING  
 SE ZIP CODE 33436  
 PUD NAME *Country Club Trails, P.U.D.*  
 TAZ 488

0226-007  
 Plat # 2-51

66/17

**ISLAND REACH APARTMENTS**



**JAMES E. NEUHAUS, Inc.**  
 Consulting Engineers, Surveyors, Planners  
 Suite 201 4114 Northlake Boulevard Palm Beach Gardens, FL 33410 305/622.1300