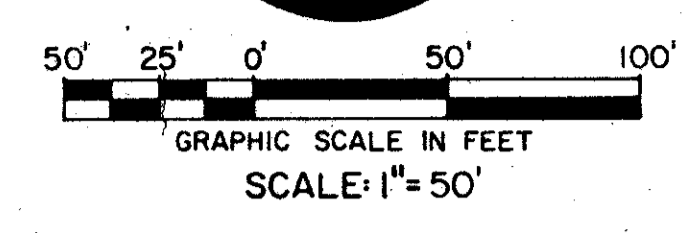


# WYCLIFFE PLAT TWO

0520-008

# 35

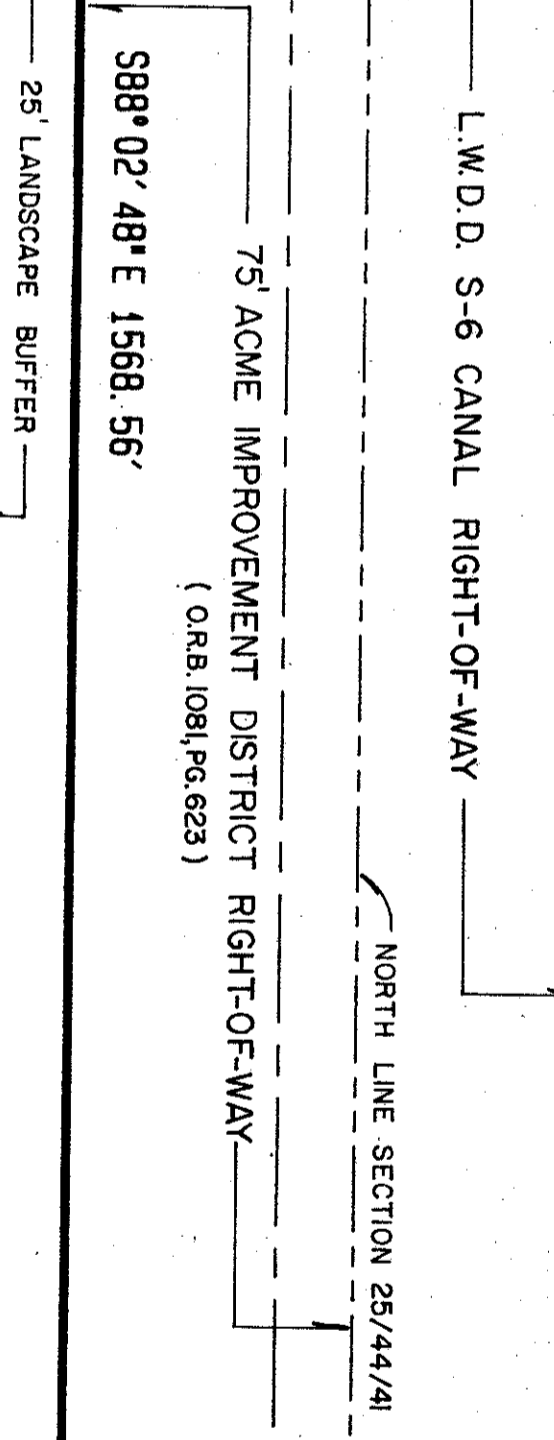
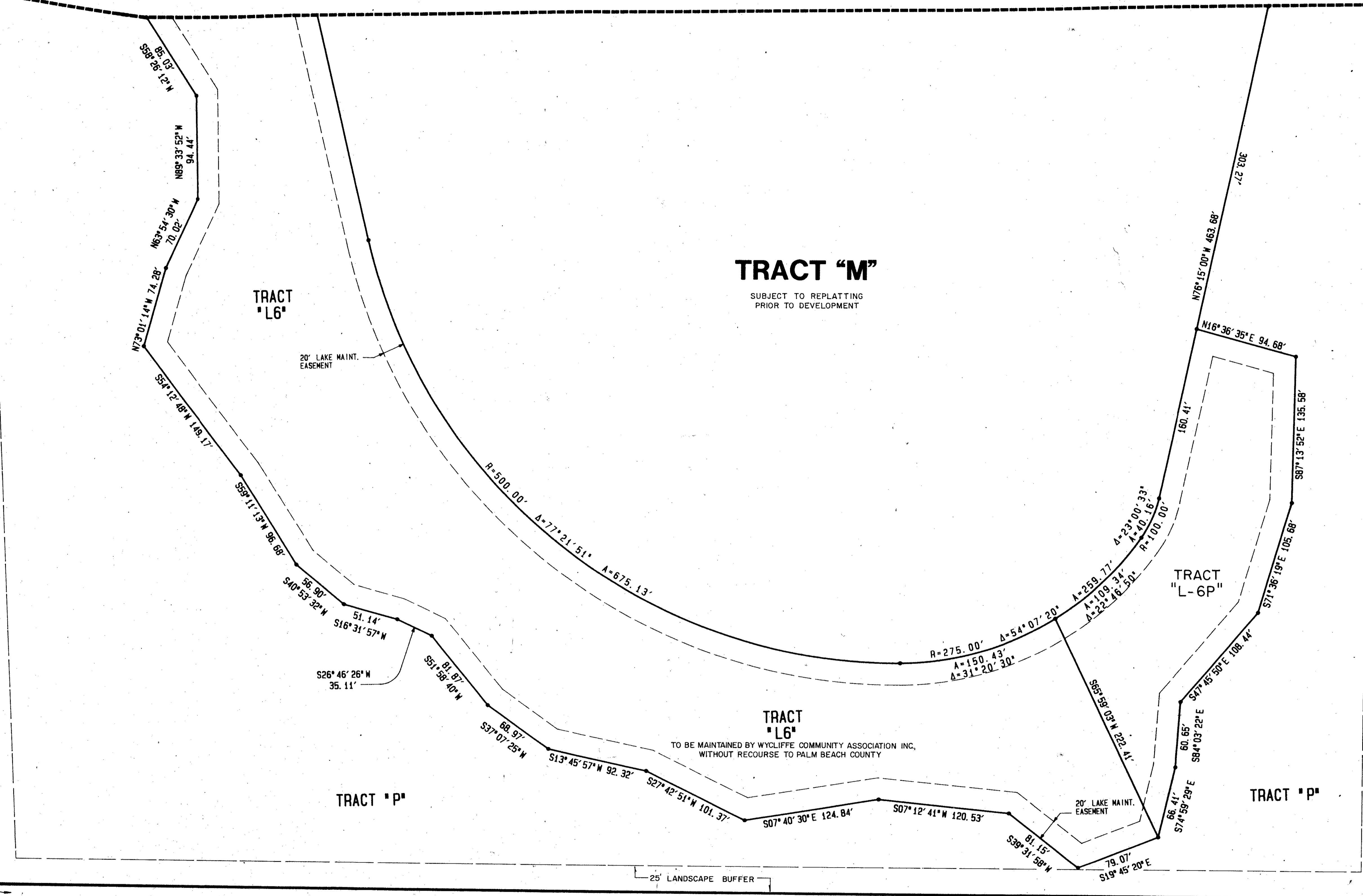
State Of Florida )  
 ) SS  
 County Of Palm Beach)  
 This Plat was filed for record at  
 this day of \_\_\_\_\_  
 A.D., 1989, and duly recorded in  
 Plat Book \_\_\_\_\_ on  
 Page \_\_\_\_\_ through \_\_\_\_\_  
 John B. Dunkle,  
 Clerk of the Circuit Court.  
 By: \_\_\_\_\_  
 Deputy Clerk



MATCH LINE  
SEE SHEET 4 OF 5

MATCH LINE  
SEE SHEET 4 OF 5

G/L LAKE WORTH ROAD EXTENSION  
 NORTH LINE 120' R/W LAKE WORTH ROAD EXTENSION (O.R.B. 8642, P.C. 1804)  
 10' LIMITED ACCESS EASEMENT  
 25' LANDSCAPE BUFFER  
 25' LANDSCAPE BUFFER



SUBDIVISION Wycliffe Plat 2  
 BOOK 66 B PAGE 35  
 FLOOD ZONE 100B  
 ZONING RT  
 86-104  
 ZIP CODE 33467  
 05/24/89

TAZ 736 + 737

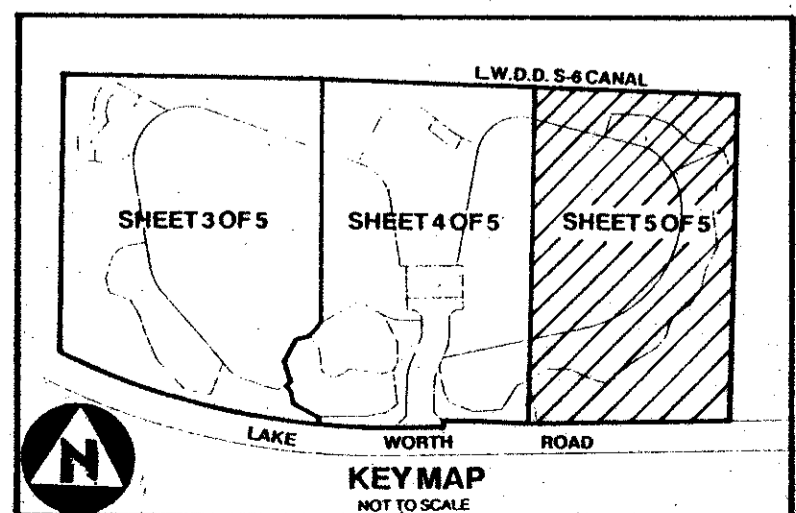
0520-008  
 Plat-86-104  
 Allocation 0001  
 66/35

UNPLATTED

UNPLATTED

RECORDED SUBDIVISION SOUTH OF RIGHT-OF-WAY LAKE WORTH ROAD  
 EXTENSION AS SHOWN HEREON IS WYCLIFFE PLAT ONE PB.62, Pp. 8-13

- Legend:**
- Indicates A Permanent Reference Monument #2424 (P.R.M.)
  - Indicates A Permanent Control Point #2424 (P.C.P.)



**BENCH MARK**  
 LAND SURVEYING & MAPPING, INC.  
 WEST PALM BEACH, FLORIDA - RIVIERA BEACH, FLORIDA

**RECORD PLAT**  
**WYCLIFFE PLAT TWO**

OWN	CRD	DATE	WD. NO.
SCALE	SIZE	PB. #	SHEET 5 OF 5

This instrument was prepared by Wm. R. Van Campen, R.L.S., in  
 and for the offices of Bench Mark Land Surveying & Mapping, Inc.,  
 4152 W. Blue Heron Boulevard Suite 121, Riviera Beach, Florida